

# OX1460 Series

OCXO, Sine wave, HCMOS, LVTTTL, 25.4 x 22.0 x 12.0mm



- Stratum 3E
- Surface mount package
- Excellent frequency vs stability

Output characteristics			
Parameter	Specification		Remarks/Test condition
Frequency range	5.0MHz ~ 50.0MHz		Limited frequencies available:5MHz, 10MHz, 12.8MHz, 13MHz,16.384MHz, 19.2MHz, 19.44MHz, 20MHz, 25.6MHz, 26MHz, 30.72MHz, 32.768MHz, 38.88MHz, 40MHz, 50MH Contact us for custom frequency requirement
Operating voltages	3.3V, 5.0V		
Output waveform	Sine wave	LVTTTL, HCMOS	
Output load	50.0Ω	15pF	
Output amplitude (dBm)   Peak-Peak(V)	5.0dBm   1.1V	-	
	8.0dBm   1.6V	-	
Harmonic	≤-40.0dBc	-	
Spurious	≤-75.0dBc	-	
Frequency stability (Typical, @ 10.00MHz)			
vs Operating temperature	±1.0ppb ~ ±10.0ppb		Table 1
Day aging	±0.5ppb ~ ±1.0ppb		Table 1
Year aging	±50.0ppb		Table 1
Stability vs Voltage	±0.5ppb ~ ±3.0ppb		Table 1
Stability vs Load	±0.5ppb ~ ±3.0ppb		Table 1
Short-term stability	0.01ppb/S		In stable temp. Without EMI/MEC or other interferences, test at25°C after power on for one hour
Power consumption @ 25°C			
Warm-up power consumption	3.0W		
Warm-up time	2.0 minute max		
Stable power consumption	1.5W max		
Voltage control characteristics			
Frequency pulling range (min)	±0.3ppm~±0.5ppm, ±0.5ppm~±0.8ppm, ±0.7ppm~±1.0ppm, ±1.0ppm ~ ±1.5ppm		
Central control voltage	1.65V, 2.5V		
Linearity	≤10%		Positive slope
Phase noise (Typical, @ 10.00MHz)			
10Hz	-120dBc/Hz		
100Hz	-140dBc/Hz		
1kHz	-150dBc/Hz		
10kHz	-152dBc/Hz		
100kHz	-155dBc/Hz		
Enviornmental characteristics			
Operable working temperature	-40°C ~ +85°C		
Storage temperature	-55°C ~ +105°C		
Vibration	Amplitude 0.75mm; acceleration: 10g; 10Hz~500Hz; a cycle per 30 min, test for 2 hr in 3 directions(X,Y,Z), IEC 68-2-06 Test Fc		
Shock	50g; 11ms; half sine wave (3 directions X,Y,X), IEC 68-2-27 Test Ea/Severity 50A		

# OX1460 Series

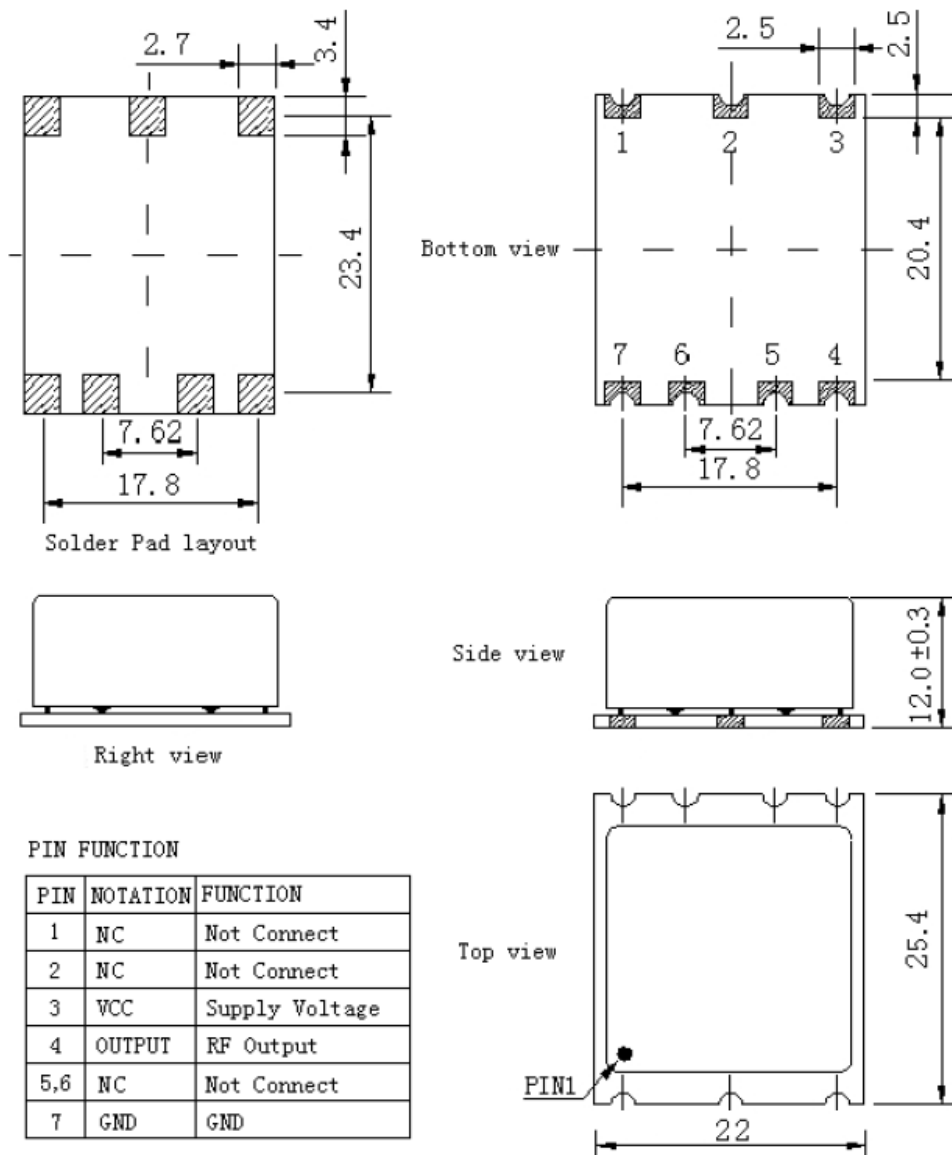
OCXO, Sine wave, HCMOS, LVTTTL, 25.4 x 22.0 x 12.0mm



Table 1: Frequency stability selection (Typical, @ 10.00MHz)

Temperature (°C)	Temperature stability (ppb)	Day-aging (ppb)	Year-aging (ppb)	Stability vs. Voltage (ppb)	Stability vs. Load (ppb)
-20°C ~ +70	±1.0	±0.5	±50.0	±0.5	±0.5
-20°C ~ +70	±3.0	±0.5	±50.0	±1.0	±1.0
-20°C ~ +70	±5.0	±0.5	±50.0	±3.0	±3.0
-20°C ~ +70	±10.0	±1.0	±50.0	±3.0	±3.0
-30°C ~ +75	±1.0	±0.5	±50.0	±0.5	±0.5
-30°C ~ +75	±3.0	±0.5	±50.0	±1.0	±1.0
-30°C ~ +75	±5.0	±0.5	±50.0	±3.0	±3.0
-30°C ~ +75	±10.0	±1.0	±50.0	±3.0	±3.0
-40°C ~ +85	±3.0	±0.5	±50.0	±1.0	±1.0
-40°C ~ +85	±5.0	±0.5	±50.0	±3.0	±3.0
-40°C ~ +85	±10.0	±1.0	±50.0	±3.0	±3.0

## Mechanical dimensions and Pin functions

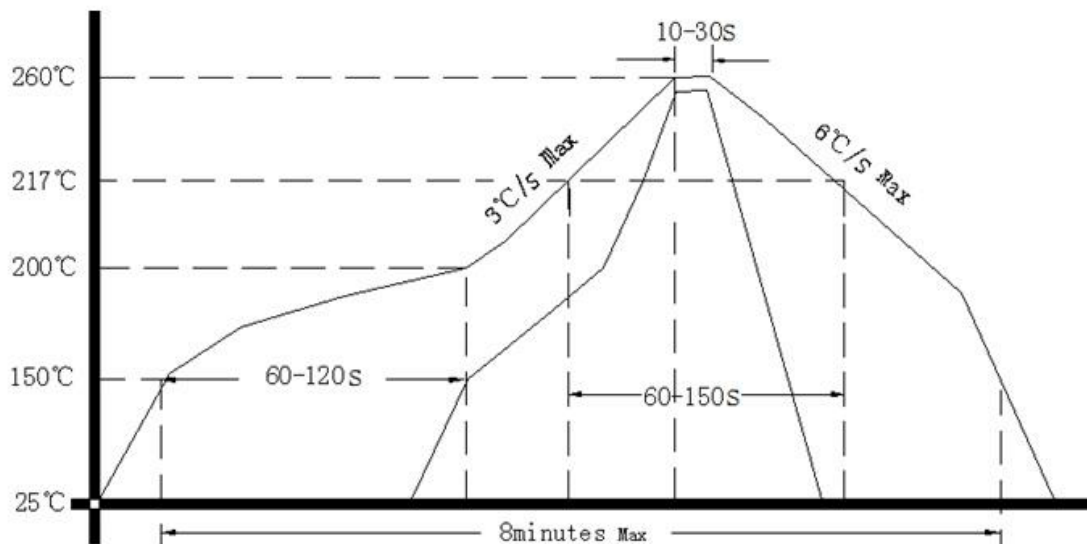


# OX1460 Series

OCXO, Sine wave, HCMOS, LVTTTL, 25.4 x 22.0 x 12.0mm



## Reflow soldering curve (RoHS)



## ACT part number

ACT will provide a unique part number with full specification based on your requirements, please provide the following details.

ACT series	Frequency (MHz)	Supply voltage (V)	Output type	Frequency stability (ppb)	Operating temperature range (°C)	Frequency tuning	Frequency pulling (ppm)	Central control voltage (Vc)
OX1460						Yes No		

Drawing control: (Internal use only)  
 Issue number : 1  
 Date: 01/06/2017  
 Internal reference: D1

**ACT (A wholly owned Acal BFi Company)**  
**+44 (0) 118 978 8878 | sales@act.co.uk | www.act.co.uk**  
**ISO9001 Registered**

Specifications subject to change without notification