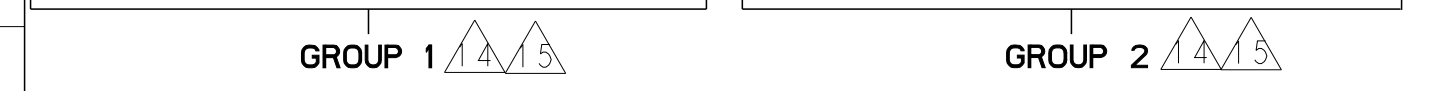


ATLANTIC VERSION TERMINATOR INTERFACE ADAPTER	PART NUMBER	REVISION	DESCRIPTION	FEED TYPE	APPLICATOR STYLE CONVERSION CHART							
					CONVERT TO	PART NUMBERS REQUIRED						
	2151032-2	D	FINE CRIMP HEIGHT ADJUST	PNEUMATIC	-	-	1338685-1	5-18022-5	-	-	-	
	2151032-5	D	FINE CRIMP HEIGHT ADJUST	SERVO LATCH PLATE ⁴	SERVO LATCH PLATE	2119951-1	2161540-1	8-2151032-5	1901094-3	1976043-1	2168400-6 (QUANTITY 2)	
	2151032-6	D	NON-CRIMP HEIGHT ADJUST	SERVO LATCH PLATE ⁴	PNEUMATIC FEED	2119950-1	1338685-1	5-18022-5	2119641-1	2119799-1	2063440-1	
	2151032-7	D	FINE CRIMP HEIGHT ADJUST	NONE	-	-	-	-	-	-	-	
	7-2151032-7	A	CRIMP TOOLING KIT	-	-	-	-	-	-	-	-	

APPLICATOR DATA		
CRIMP WIRE	SIZE	TYPE
	.205 [5.2] mm	Ø
INSUL	.000 [0.00 mm]	-
APPLICATOR INSTRUCTIONS 408-10389		

TERMINAL DATA: TE TERMINAL		TE CRIMP SPECIFICATION	
TERMINAL NAME: FULLY INSULATED FASTON			
WIRE STRIP LENGTH		INSULATION DIAMETER RANGE	
.265-.297 IN [6.73-7.54 mm]		Ø	
TERMINAL APPLICATION SPECIFICATION	114-2123		
TERMINALS APPLIED ²⁰			
TE TERMINAL	TE TERMINAL	TE TERMINAL	TE TERMINAL
3-350815-2	3-520116-2	3-520140-2	5-520150-2
5-350815-2	3-520124-2	3-520140-4	6-520150-2
3-350819-2	9-520124-2	5-520140-2	3-520276-2
5-350819-2		9-520140-2	9-520276-2
3-520106-2		3-520150-2	3-521142-2
		3-521150-2	3-1969626-1

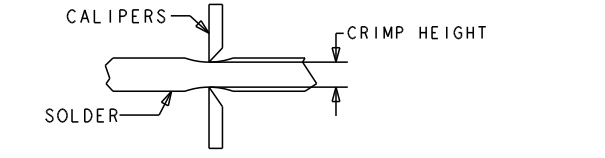


WIRE SIZE	CRIMP HEIGHT INCH [mm]	CRIMP HEIGHT REFERENCE SETTING	Ø SOLDER
14 AWG	0.075+/-0.002 [1.91+/-0.05]	6.4	.187 IN [4.750mm]
16, (2)18, OR (3)20	0.070+/-0.002 [1.78+/-0.05]	7.7	.187 IN [4.750mm]

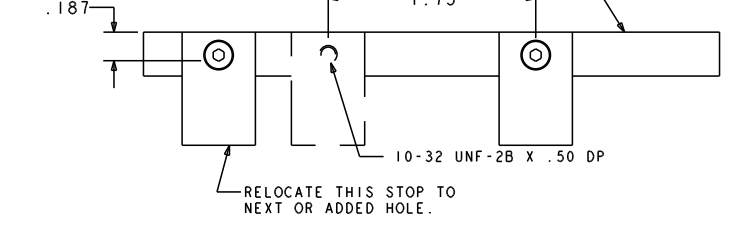
- ¹ RECOMMENDED SPARE PARTS
- ² GREASE BEARING SURFACES LIGHTLY
- 3. LUBRICATE DAILY PER THE APPLICATOR INSTRUCTION SHEET SUPPLIED WITH THE APPLICATOR.
- ⁴ APPLICATOR SPECIFIC DATA TO BE ENTERED INTO BLANK MEMORY CHIP AT ASSEMBLY. SEE BELOW FOR PART NUMBER:
 PNEUMATIC FEED WITH "SMART APPLICATOR" CONVERSION: 8-2151032-4
 SERVO FEED WITH "FINE CRIMP HEIGHT ADJUST": 8-2151032-5
 SERVO FEED WITH "NON-CRIMP HEIGHT ADJUST": 8-2151032-6
- 5. ADJUSTMENT OF THE STRIPPER MAY BE REQUIRED WHEN MOVING THE APPLICATOR BETWEEN BENCH AND LEADMAKER APPLICATIONS.
- ⁶ GREASE THREADS, GROOVE AND O-RING ON ITEMS 35 & 252.
- ⁷ MAGNET, ITEM 166 MUST BE ORIENTED CORRECTLY IN ORDER TO PROPERLY ACTUATE THE COUNTER.
- ⁸ CRIMP HEIGHT REFERENCE SETTING WAS THE SETTING USED WHEN THE APPLICATOR WAS QUALIFIED AT THE FACTORY. ADJUSTMENT MAY BE NECESSARY WHEN RUNNING APPLICATOR IN THE FIELD.
- ⁹ TO CONVERT THE APPLICATOR TO A NON-CARRIER CUTTING STYLE, REMOVE ITEM 13 AND ATTACH TO THE LOCATION ON THE BACK SIDE OF THE HOUSING. REFER TO INSTRUCTION SHEET FOR ADDITIONAL INFORMATION.
- ¹⁰ WHEN ASSEMBLING -6 NON-CRIMP HEIGHT ADJUST APPLICATOR USE SHIM PACK 2119957-2 TO ALIGN APPLICATOR'S MAXIMUM WIRE CRIMP HEIGHT AT NORMAL TERMINATOR SHUT HEIGHT
- ¹¹ ITEM 7 MUST BE REMOVED IF APPLICATOR IS USED ON BENCH MACHINE.
- ¹² ITEMS 5 AND 9 OR ITEMS 10 AND 22 ARE REQUIRED WHEN RUNNING ON A LEADMAKER. ITEM 42 OR ITEM 43 REQUIRED WHEN RUNNING ON A BENCH MACHINE.
- ¹³ FEED ADJUSTMENT MAY BE REQUIRED WHEN SWITCHING TERMINALS.
- ¹⁴ GROUP 1 TERMINALS: Ø.160 IN [4.06mm] MAX INSULATION
 GROUP 2 TERMINALS: Ø.260 IN [6.60mm] MAX INSULATION

³ USE ITEMS 5, 9, OR 42 WITH GROUP 1 TERMINALS
 USE ITEMS 10, 22, OR 43 WITH GROUP 2 TERMINALS

⁶ TO CHECK CRIMP HEIGHT, CRIMP SOLDER (Ø.19 IN [4.83mm] 60/40 SOLID CORE) AND MEASURE AT CENTER OF SLUG.



⁷ IT MAY BE NECESSARY TO MODIFY THE T-TERMINATING/K-PRESS BASE PLATE BEFORE USE BY ADDING A 10-32 HOLE TO RELOCATE THE FORWARD STOP AS SHOWN.



¹⁸ ITEMS 253 AND 255 MUST BE INSTALLED IN THE G-TERMINATING UNIT CHIP RELIEF HOLE BEFORE INSTALLING THE APPLICATOR.

¹⁹ ITEM 257, REQUIRED IF APPLICATOR IS RUN ON T-TERMINATING UNIT/K-PRESS. GUARD, ITEM 256, REQUIRED IF APPLICATOR IS BEING USED ON G-TERMINATOR.

²⁰ TERMINAL PITCH NOT COMPATIBLE WITH MECHANICAL FEED.

***WARNING**
 ON INSTALLATION, SET WIRE DISC, ITEM 40 TO LARGEST WIRE SIZE SETTING. USE OF SETTINGS BELOW MINIMUM REQUIRED CRIMP HEIGHT SETTING WILL CAUSE DAMAGE TO CRIMP TOOLING.

²¹ APPLY PART NUMBER 1-23419-5 LOCTITE TO THREADS OF ITEMS 62.
 FOR -6 ONLY APPLY PART NUMBER 1-23419-5 LOCTITE TO THREADS OF ITEMS 37.

-	-	1	-	-	2119957-2	APPLICATOR SHIM PACK	260
-	REF	REF	REF	REF	462992-5	GUARD ASSY	257
-	REF	REF	REF	REF	679532-1	INSERT, GUARD	256
-	1	1	1	1	189728-1	BRACKET, SPACER	255
-	1	1	1	1	568681-1	SPACER, BASE PLATE	253
-	1	-	1	1	8-21084-0	O-RING, .676 ID, .070 DIA. MAT.	252
-	-	-	-	1	2119640-1	PUSH ROD, AIR FEED	250
-	-	-	-	1	1803259-1	BUSHING, FLANGED	249
-	-	-	-	1	2119641-1	FEED CAM, AIR FEED	248
-	1	-	1	1	2119798-1	DETENT PIN	247
-	2	-	2	2	1-22279-3	SPRING, COMPRESSION	246
-	-	1	-	-	2119758-1	RAM, AMP STYLE, SIDE FEED, NON-ADJ.	245
-	1	1	1	1	18023-1	SCR, SKT HD CAP M3 X 5.0	241
-77	-7	-6	-5	-2	PART NO	DESCRIPTION	ITEM NO

ATLANTIC VERSION
 Shown on sheets 1 of 4 & 2 of 4
 (Pacific version shown on sheets 3 of 4 & 4 of 4)

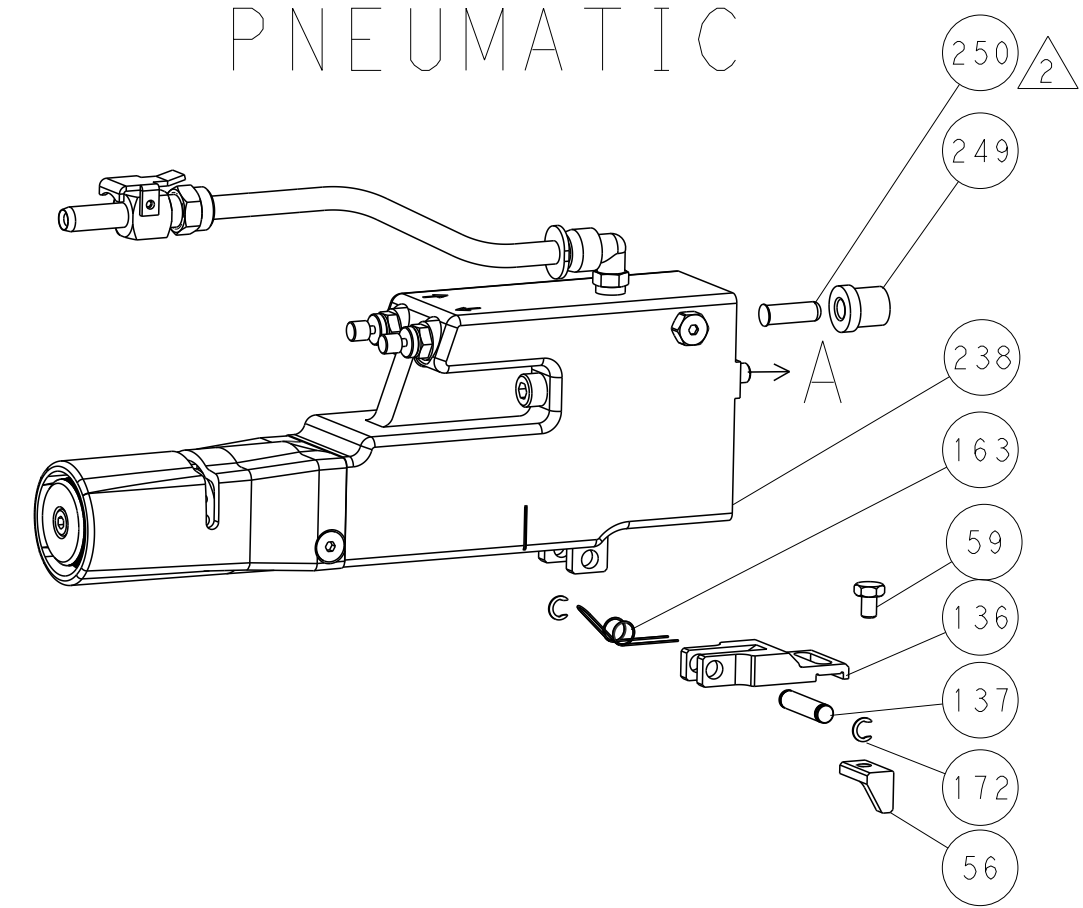
SET UP GAUGE	LOC	DIST	REVISIONS					
2119599-1	A	66	P	LTN	DESCRIPTION	DATE	OWN	APVD
			C		ECR-15-011866	10AUG2015	JH	TE
			C1		ECR-15-012176	17AUG2015	JH	TE
			C2		ECR-15-016183	05NOV2015	JH	JDG
			D		ECR-16-015863	16NOV2016	TB	CT

-	-	2	2	-	2168400-6	SHCS, LOW HEAD, RoHS, M5 X 16	240
-	-	-	-	-	2119580-1	MECHANICAL FEED ASSEMBLY	239
-	-	-	-	1	2063440-2	AIR FEED MODULE	238
-	-	1	1	-	2119740-2	TAG, IDENTIFICATION	213
-	-	1	1	-	1901094-3	SPACER, FEEDER	198
-	-	-	-	2	21045-3	RING, RETAIN, EXTERN, 3/16 CRESCENT	172
-	1	1	1	1	994969-1	MAGNET, RARE EARTH HIGH ENERGY	166
-	REF	REF	REF	REF	994970-2	COUNTER, MAGNETIC	164
-	-	-	-	1	240638-1	SPRING, FEED FINGER	163
-	-	-	-	1	3-23627-7	PIN, RETAIN, GRVD, 3/16 X .854	137
-	-	-	-	1	2119799-1	HOLDER, FEED FINGER, AF	136
-	-	REF	REF	-	SEE NOTE 4	MEMORY CHIP, PROGRAMMED	135
-	-	1	1	-	1633743-1	SERVO FEED LATCH ASM	133
-	1	1	1	1	1-22281-8	SPRING, COMPRESSION	121
-	1	1	1	1	1-690438-0	FRONT STRIP GUIDE	96
-	4	4	4	4	2168083-1	SCR, SKT HD CAP, RoHS, M3 X 8.0	95
-	1	1	1	1	2168083-6	SCR, SKT HD CAP, RoHS, M5 X 65	93
-	1	1	1	1	455888-4	SPACER, CRIMPER	82
-	1	1	1	1	240641-6	SPACER	81
-	1	1	1	1	2119956-1	DOCUMENTATION PACKAGE	71
-	1	1	1	1	2161332-1	DEPRESSOR, WIRE FUNNEL	70
-	1	1	1	1	2161331-1	SPACER, WIRE FUNNEL DEPRESSOR	69
-	2	2	2	2	1-18028-4	WASHER, FLAT, REG M3	68
-	1	-	-	1	2119740-1	TAG, IDENTIFICATION	67
-	2	2	2	2	2168078-1	SCREW, DRIVE, RH, RoHS, 2 x .188	66
-	1	-	1	1	2119793-1	LIMITER, ADJUSTMENT BOLT	63
-	3	-	3	3	992763-5	SCR, SET, SOC, CONE POINT, M3 x 4.0	62
-	2	2	2	2	2-18032-5	SCR, SET, FLT POINT M5 X 20.0	61
-	1	1	1	1	2079383-4	SCR, BHSC, RoHS (M4 X 8)	60
-	-	-	-	1	5-18022-5	SCR, HEX HD CAP, M4 X 6.0	59
-	-	-	-	1	462427-2	FINGER, FEED	56
-	4	4	4	4	2168400-1	SHCS, LOW HEAD, RoHS, M4 X 12	54
-	2	2	2	2	2168083-8	SCR, SKT HD CAP, RoHS, M4 X 16	53
-	-	-	-	1	18023-9	SCR, SKT HD CAP M4 X 6.0	49
-	1	1	1	1	1-2119656-9	APPLICATOR BASIC ASSEMBLY, SF	46
-	1	-	1	1	2119370-1	RAM, AMP STYLE, SIDE FEED	44
-	1	1	1	1	462433-7	SUPPORT, INSULATION	43
-	1	1	1	1	462433-6	SUPPORT, INSULATION	42
-	1	1	1	1	2079383-7	SCR, BHSC, RoHS (M8 X 25)	41
-	1	-	1	1	2119645-1	DISC, NUMBERED FA WIRE ADJUSTMENT	40
-	1	-	1	1	2119957-1	APPLICATOR SHIM PACK	39
-	1	1	1	1	2119644-2	RAM WASHER, PRECISION	38
-	1	1	1	1	2119085-1	FA HEAD, ATLANTIC STYLE	37
-	1	-	1	1	2119092-1	BOLT, ADJUSTMENT	35
-	2	2	2	2	5-22278-1	SPRING, COMPRESSION	33
-	1	1	1	1	2161328-1	HEX HEAD, FLANGED, M5 x 8mm LONG	32
-	2	2	2	2	1-2168083-4	SCR, SKT HD CAP, RoHS, M4 X 5	30
-	1	1	1	1	2161336-1	PLATE, REAR STRIP GUIDE	29
-	2	2	2	2	22281-9	SPRING, COMPRESSION	27
-	1	1	1	1	356835-1	LEVER, DRAG RELEASE	26
-	1	1	1	1	240792-1	DRAG, TERMINAL	25
-	1	1	1	1	684042-4	GUIDE, STRIP, FRONT	24
-	1	1	1	1	980371-4	SCR, SKT HD SHLDR 5.0 DIA X 6.0	23
-	1	1	1	1	462431-5	WIRE FUNNEL	22
-	1	1	1	1	2168083-2	SCR, SKT HD CAP, RoHS, M4 X 8.0	21
-	1	1	1	1	1-18028-2	WASHER, FLAT, REG M4	20
-	1	1	1	1	2119533-1	STRIPPER, SIDE FEED	19
-	1	1	1	1	463460-3	HOLD DOWN, TERMINAL	18
-	1	1	1	1	469542-3	REAR FLOATING SHEAR	17
-	4	4	4	4	1-2168083-1	SCR, SKT HD CAP, RoHS, M3 X 6	16
-	1	1	1	1	2161335-2	SHEAR PLATE, REAR	15
-	1	1	1	1	2119862-2	SHEAR HOLDER, REAR	14
-	1	1	1	1	2280441-1	INSERT, SHEAR	13
-	1	1	1	1	3-22280-3	SPRING, COMPRESSION	12
-	1	1	1	1	356885-4	STOP, SHEAR	11
-	1	1	1	1	462843-6	TERMINAL SUPPORT	10
-	1	1	1	1	462843-5	TERMINAL SUPPORT	9
-	1	1	1	1	464282-2	ANVIL, SAND-BLASTED 16-14	8
-	1	1	1	1	803925-2	GUIDE, CARRIER SCRAP	7
-	1	1	1	1	2-690468-5	DEPRESSOR SHEAR, REAR	6
-	1	1	1	1	462431-4	WIRE FUNNEL	5
-	1	1	1	1	238009-3	BLOCK, FL CRIMPER SPACER	4
-	1	1	1	1	464281-1	CRIMPER, SEMI FLAT 16-14	1
-77	-7	-6	-5	-2	PART NO	DESCRIPTION	ITEM NO

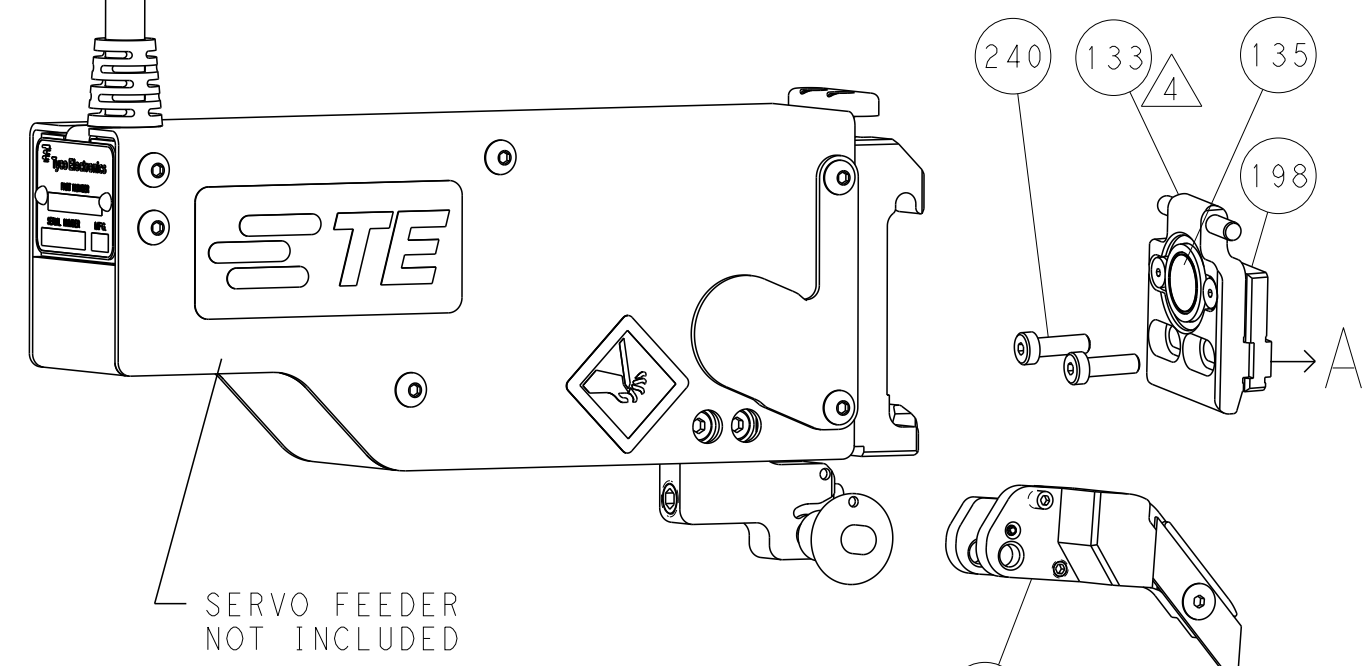
DIMENSIONS:		TOLERANCES UNLESS OTHERWISE SPECIFIED:		MATERIAL:	
mm	0 PLC	±		WEIGHT	
	1 PLC	±			
	2 PLC	±			
	3 PLC	±			
	4 PLC	±			
	5 PLC	±			
	ANGLES	±			
	FINISH				

LOC	DIST	REVISIONS					
A	66	P	LTH	DESCRIPTION	DATE	DWN	APVD
		-	-	SEE SHEET 1	-	-	-

FEED TYPE PNEUMATIC

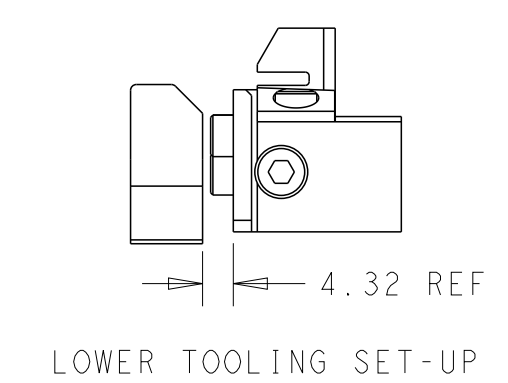
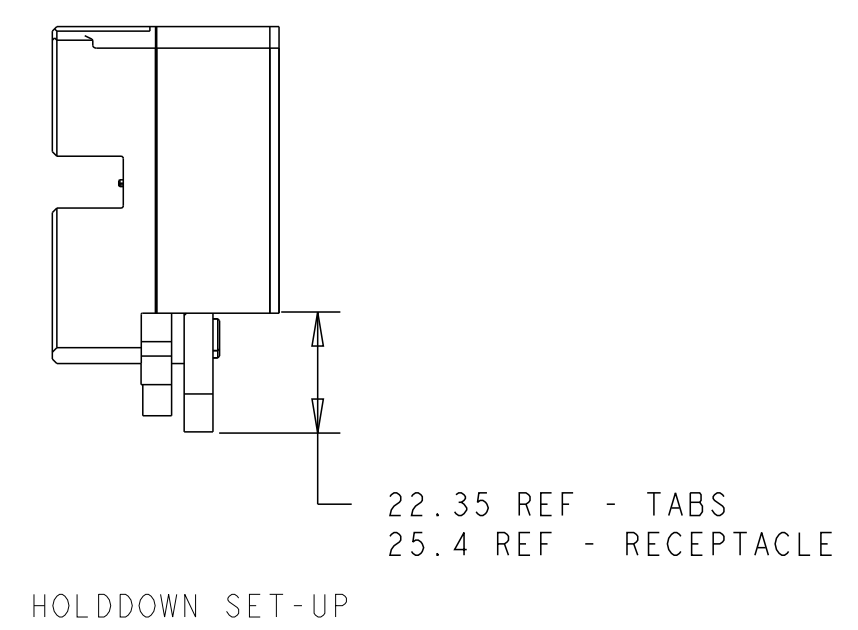
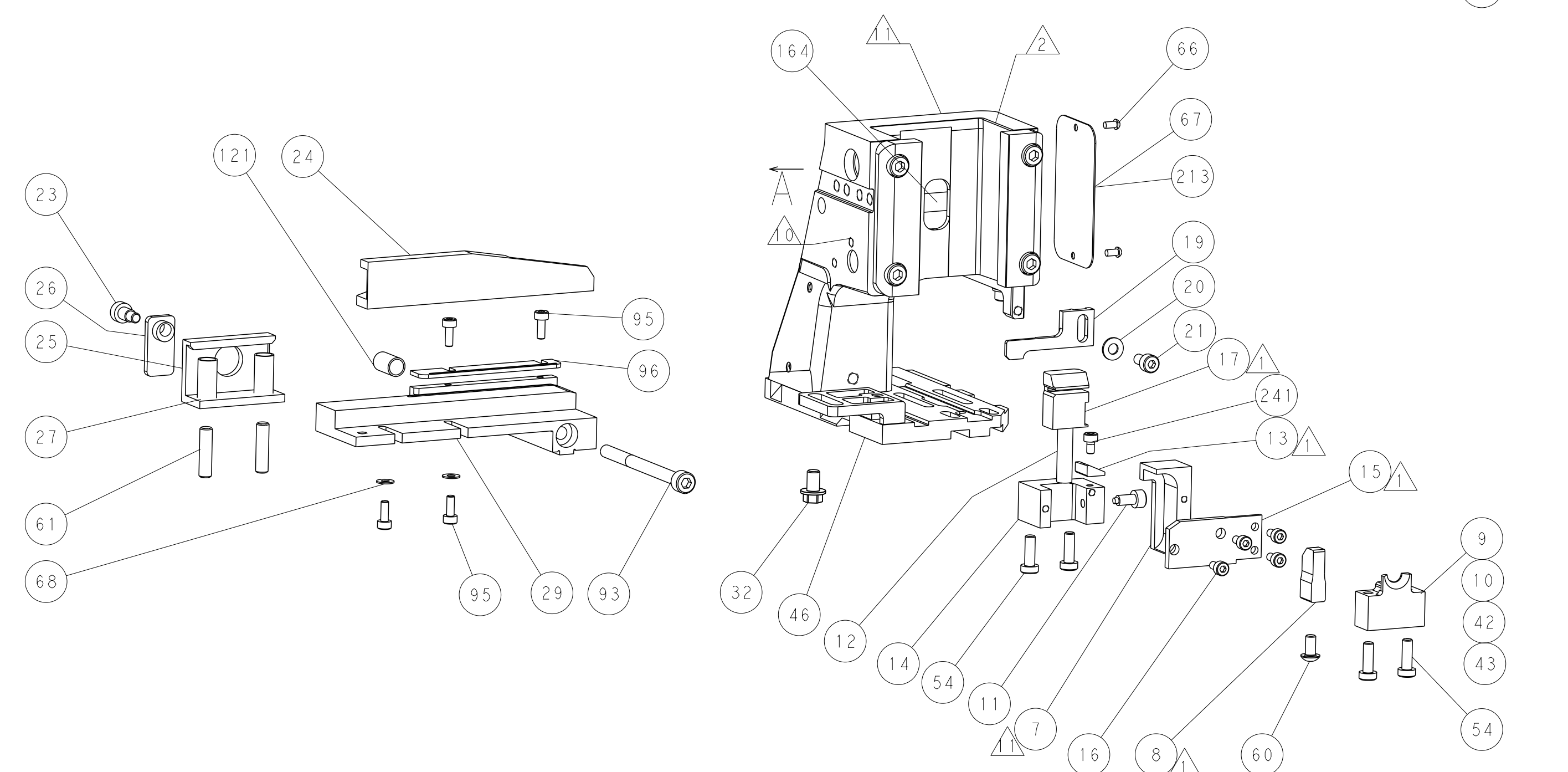
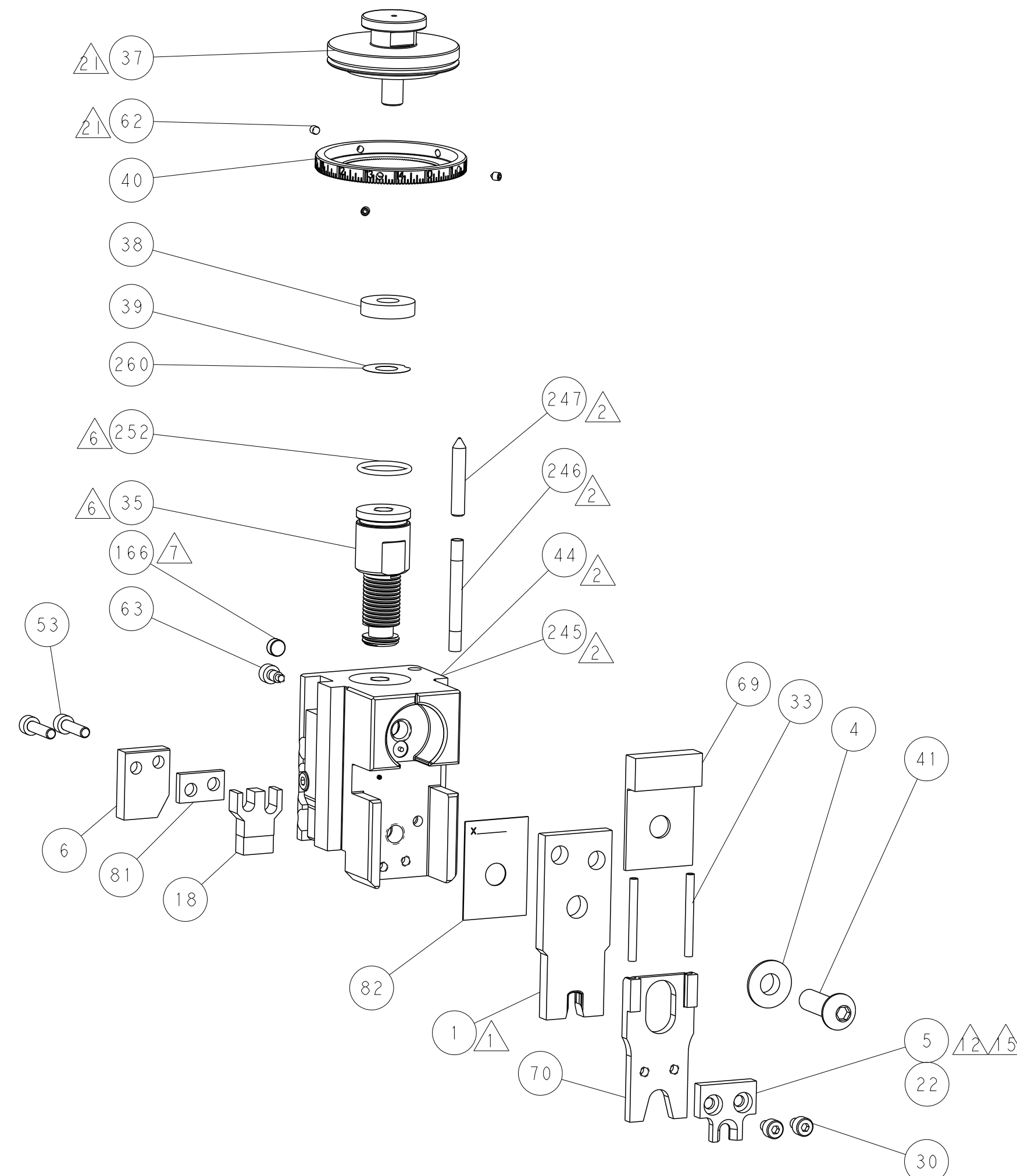
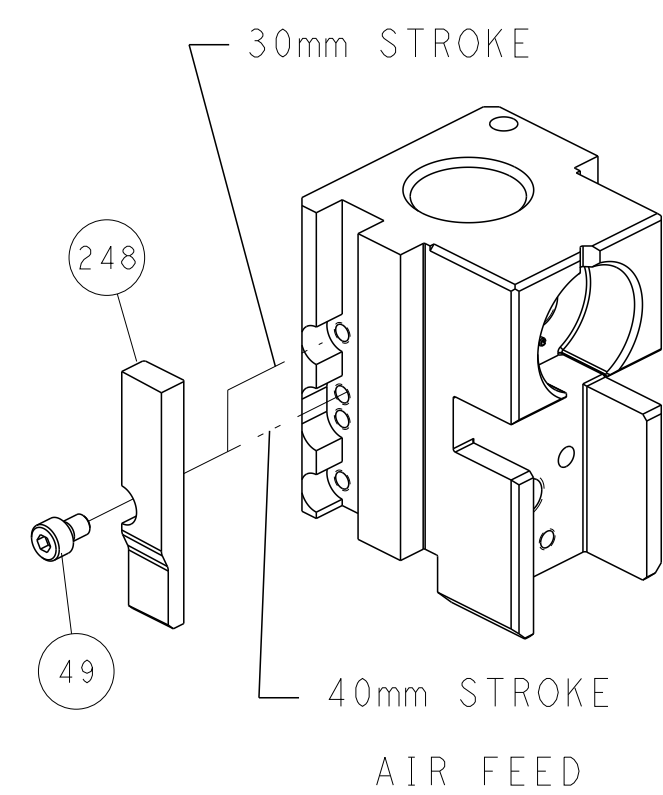


SERVO LATCH PLATE



***FEED FINGER REPRESENTATION ABOVE MAY DIFFER FROM ACTUAL FEED FINGER THAT IS REQUIRED BY THIS APPLICATOR

CAM POSITIONS



ATLANTIC VERSION
 Shown on sheets 1 of 4 & 2 of 4
 (Pacific version shown on sheets 3 of 4 & 4 of 4)

<small>THIS DRAWING IS UNPUBLISHED. RELEASED FOR PUBLICATION 2011 BY TYCO ELECTRONICS CORPORATION. ALL RIGHTS RESERVED.</small>		DWN: B. WEAVER 17OCT2011 CHK: G. HOFFNER 17OCT2011 APVD: T. ELBIN 17OCT2011	NAME: OCEAN SIDE FEED APPLICATOR SIZE: A1 CAGE CODE: 00779 DRAWING NO: 2151032	TE Connectivity Harrisburg, PA 17105-3608
DIMENSIONS: mm TOLERANCES UNLESS OTHERWISE SPECIFIED: 0 PLC ± 1 PLC ± 2 PLC ± 3 PLC ± 4 PLC ± ANGLES ± FINISH	TOLERANCES UNLESS OTHERWISE SPECIFIED: 0 PLC ± 1 PLC ± 2 PLC ± 3 PLC ± 4 PLC ± ANGLES ± FINISH	WEIGHT: - SCALE: 1:1 SHEET: 2 OF 4 REV: D	RESTRICTED TO: - Customer Accessible Production Drawing	SHEETS 3 & 4 ARE NOT REQUIRED FOR ATLANTIC VERSION

PACIFIC VERSION TERMINATOR INTERFACE ADAPTER	PART NUMBER	REVISION	DESCRIPTION	FEED TYPE	APPLICATOR STYLE CONVERSION CHART						
					CONVERT TO	PART NUMBERS REQUIRED					
	2-2151032-2	D	FINE CRIMP HEIGHT ADJUST	PNEUMATIC	-	1338685-1	5-18022-5	-	-	-	
					SERVO LATCH PLATE	2119951-1	2161540-1	8-2151032-5	1901094-3	1976043-1	2168400-6 (QUANTITY 2)
					SMART APPLICATOR	2161326-1	-	8-2151032-4	-	-	-
	2-2151032-5	D	FINE CRIMP HEIGHT ADJUST	SERVO LATCH PLATE $\Delta 4$	-	1338685-1	5-18022-5	-	-	-	-
2-2151032-7	D	FINE CRIMP HEIGHT ADJUST	NONE	-	-	-	-	-	-	-	
7-2151032-7	A	CRIMP TOOLING KIT	-	-	-	-	-	-	-	-	

APPLICATOR DATA		
CRIMP SIZE	WIRE	TYPE
.205 [5.21 mm]	.205 [5.21 mm]	0
INSUL .000 [0.00 mm]		-
APPLICATOR INSTRUCTIONS 408-10389		

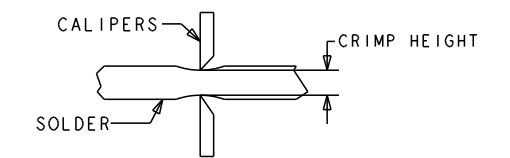
TERMINAL DATA: TE TERMINAL		TE CRIMP SPECIFICATION	
TERMINAL NAME: FULLY INSULATED FASTON			
WIRE STRIP LENGTH		INSULATION DIAMETER RANGE	
.265-.297 IN [6.73-7.54 mm]		\emptyset $\Delta 3$	
TERMINAL APPLICATION SPECIFICATION			
	114-2123		
TERMINALS APPLIED $\Delta 9$			
TE TERMINAL	TE TERMINAL	TE TERMINAL	TE TERMINAL
3-350815-2	3-520116-2	3-520140-2	5-520150-2
5-350815-2	3-520124-2	3-520140-4	6-520150-2
3-350819-2	9-520124-2	5-520140-2	3-520276-2
5-350819-2		9-520140-2	9-520276-2
3-520106-2		3-520150-2	3-521142-2
		3-521150-2	3-1969626-1

WIRE SIZE	CRIMP HEIGHT INCH [mm]	CRIMP HEIGHT REFERENCE SETTING	\emptyset SOLDER $\Delta 8$
14 AWG	0.075+/-0.002 [1.91+/-0.05]	6.4	.187 IN [4.750mm]
16, (2)18, OR (3)20	0.070+/-0.002 [1.78+/-0.05]	7.7	.187 IN [4.750mm]

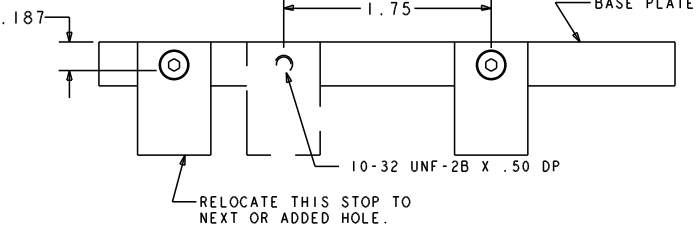
- $\Delta 1$ RECOMMENDED SPARE PARTS
- $\Delta 2$ GREASE BEARING SURFACES LIGHTLY
- 3. LUBRICATE DAILY PER THE APPLICATOR INSTRUCTION SHEET SUPPLIED WITH THE APPLICATOR.
- $\Delta 4$ APPLICATOR SPECIFIC DATA TO BE ENTERED INTO BLANK MEMORY CHIP AT ASSEMBLY. SEE BELOW FOR PART NUMBER: PNEUMATIC FEED WITH "SMART APPLICATOR" CONVERSION: 8-2151032-4 SERVO FEED WITH "FINE CRIMP HEIGHT ADJUST": 8-2151032-5
- 5. ADJUSTMENT OF THE STRIPPER MAY BE REQUIRED WHEN MOVING THE APPLICATOR BETWEEN BENCH AND LEADMAKER APPLICATIONS.
- $\Delta 6$ GREASE THREADS, GROOVE AND O-RING ON ITEMS 139 & 152.
- $\Delta 7$ MAGNET MUST BE ORIENTED CORRECTLY IN ORDER TO PROPERLY ACTUATE THE COUNTER.
- $\Delta 8$ CRIMP HEIGHT REFERENCE SETTING WAS THE SETTING USED WHEN THE APPLICATOR WAS QUALIFIED AT THE FACTORY. ADJUSTMENT MAY BE NECESSARY WHEN RUNNING APPLICATOR IN THE FIELD.
- $\Delta 9$ TO CONVERT THE APPLICATOR TO A NON-CARRIER CUTTING STYLE, REMOVE ITEM 13 AND ATTACH TO THE LOCATION ON BACK SIDE OF THE HOUSING. REFER TO INSTRUCTION SHEET FOR ADDITIONAL INFORMATION.
- $\Delta 10$ ITEM 7 MUST BE REMOVED IF APPLICATOR IS USED ON BENCH MACHINE.
- $\Delta 11$ ITEMS 5 AND 9 OR ITEMS 10 AND 22 ARE REQUIRED WHEN RUNNING ON A LEADMAKER. ITEM 42 OR ITEM 43 REQUIRED WHEN RUNNING ON A BENCH MACHINE.
- $\Delta 12$ FEED ADJUSTMENT MAY BE REQUIRED WHEN SWITCHING TERMINALS.
- $\Delta 13$ GROUP 1 TERMINALS: \emptyset .160 IN [4.06mm] MAX INSULATION
GROUP 2 TERMINALS: \emptyset .260 IN [6.60mm] MAX INSULATION

$\Delta 4$ USE ITEMS 5, 9, OR 42 WITH GROUP 1 TERMINALS
USE ITEMS 10, 22, OR 43 WITH GROUP 2 TERMINALS

$\Delta 5$ TO CHECK CRIMP HEIGHT, CRIMP SOLDER (\emptyset .19 IN [4.83mm] 60/40 SOLID CORE) AND MEASURE AT CENTER OF SLUG.



$\Delta 6$ IT MAY BE NECESSARY TO MODIFY THE T-TERMINATING/K-PRESS BASE PLATE BEFORE USE BY ADDING A 10-32 HOLE TO RELOCATE THE FORWARD STOP AS SHOWN.



$\Delta 7$ ITEMS 253 AND 255 MUST BE INSTALLED IN THE G-TERMINATING UNIT CHIP RELIEF HOLE BEFORE INSTALLING THE APPLICATOR.

$\Delta 8$ ITEM 257, REQUIRED IF APPLICATOR IS RUN ON T-TERMINATING UNIT/K-PRESS. GUARD, ITEM 256, REQUIRED IF APPLICATOR IS BEING USED ON G-TERMINATOR.

$\Delta 9$ TERMINAL PITCH NOT COMPATIBLE WITH MECHANICAL FEED.

$\Delta 10$ APPLY PART NUMBER 1-23419-5 LOCTITE TO THREADS OF ITEMS 62.

***WARNING**
ON INSTALLATION, SET WIRE DISC, ITEM 40 TO LARGEST WIRE SIZE SETTING. USE OF SETTINGS BELOW MINIMUM REQUIRED CRIMP HEIGHT SETTING WILL CAUSE DAMAGE TO CRIMP TOOLING.

ITEM NO	REF	REF	REF	REF	DESCRIPTION	ITEM NO
257	-	REF	REF	REF	GUARD ASSY	257
256	-	REF	REF	REF	INSERT, GUARD	256
255	-	1	1	1	BRACKET, SPACER	255
253	-	1	1	1	SPACER, BASE PLATE	253
251	-	1	1	1	FINE ADJUST HEAD ASM, PACIFIC STYLE	251
250	-	-	-	1	PUSH ROD, AIR FEED	250
249	-	-	-	1	BUSHING, FLANGED	249
246	-	2	2	2	SPRING, COMPRESSION	246
241	-	1	1	1	SCR, SKT HD CAP M3 X 5.0	241
240	-	2	2	2	SHCS, LOW HEAD, RoHS, M5 X 16	240
239	-	-	-	-	MECHANICAL FEED ASSEMBLY	239
	-77	-27	-25	-22	PART NO	DESCRIPTION

SET UP GAUGE	LOC	DIST	REVISIONS					
2119599-1	A	66	P	LTN	DESCRIPTION	DATE	OWN	APVD
			-	-	SEE SHEET 1	-	-	-

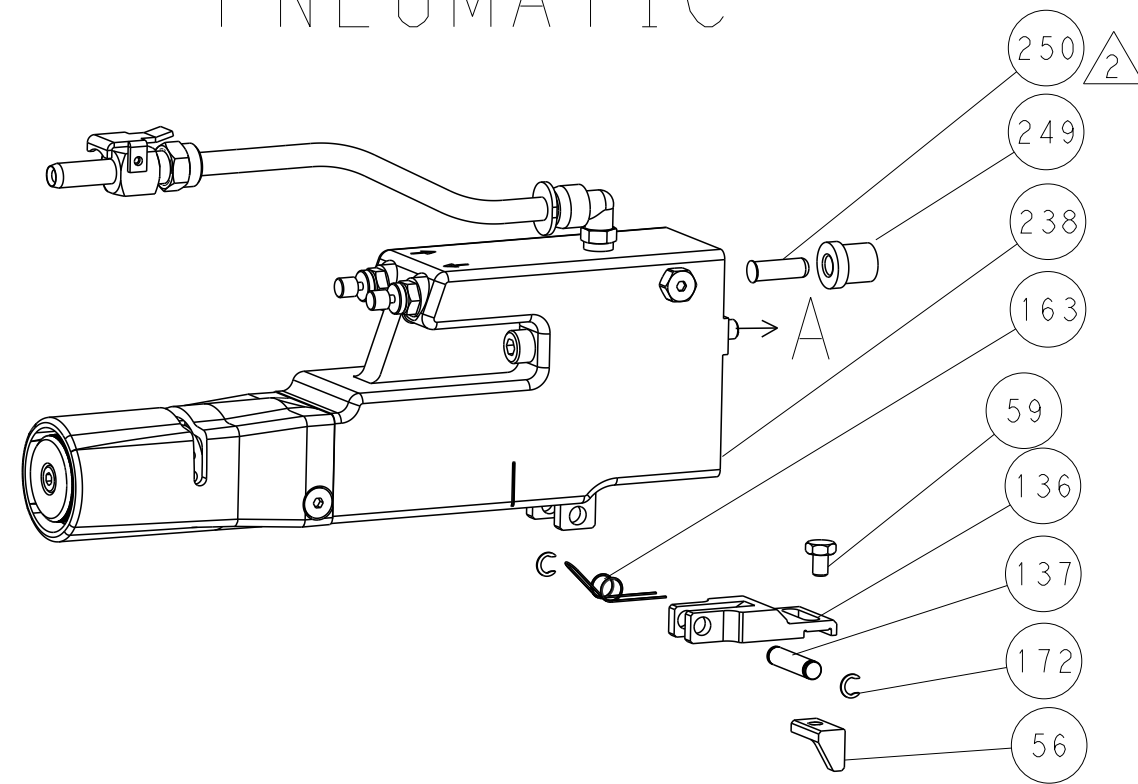
ITEM NO	REF	REF	REF	REF	DESCRIPTION	ITEM NO
238	-	-	-	1	AIR FEED MODULE	238
213	-	-	-	1	TAG IDENTIFICATION	213
198	-	-	-	1	SPACER, FEEDER	198
172	-	-	-	2	RING, RETAIN, EXTERN, 3/16 CRESCENT	172
166	-	1	1	1	MAGNET, RARE EARTH HIGH ENERGY	166
164	-	REF	REF	REF	COUNTER, MAGNETIC	164
163	-	-	-	1	SPRING, FEED FINGER	163
152	-	1	1	1	O-RING, .801 ID, .070 DIA. MAT.	152
151	-	-	-	1	FEED CAM, AIR FEED	151
145	-	1	1	1	DETENT PIN	145
144	-	1	1	1	SCR, BHSC, RoHS (M4 X 16)	144
143	-	4	4	4	SHCS, LOW HEAD, RoHS, M4 X 20	143
141	-	1	1	1	APPLICATOR BASIC ASSEMBLY, SF	141
140	-	1	1	1	RAM, ASIAN STYLE, SIDE FEED	140
139	-	1	1	1	BOLT, ADJUSTMENT	139
137	-	-	-	1	PIN, RETAIN, GRVD, 3/16 X .854	137
136	-	-	-	1	HOLDER, FEED FINGER, AF	136
135	-	-	-	REF	SEE NOTE 4 MEMORY CHIP, PROGRAMMED	135
133	-	-	-	1	SERVO FEED LATCH ASM	133
121	-	1	1	1	SPRING, COMPRESSION	121
96	-	1	1	1	FRONT STRIP GUIDE	96
95	-	4	4	4	SCR, SKT HD CAP, RoHS, M3 X 8.0	95
93	-	1	1	1	SCR, SKT HD CAP, RoHS, M5 X 65	93
82	-	1	1	1	SPACER, CRIMPER	82
81	-	1	1	1	SPACER	81
71	-	1	1	1	DOCUMENTATION PACKAGE	71
70	-	1	1	1	DEPRESSOR, WIRE FUNNEL	70
69	-	1	1	1	SPACER, WIRE FUNNEL DEPRESSOR	69
68	-	2	2	2	WASHER, FLAT, REG M3	68
67	-	1	-	1	TAG IDENTIFICATION	67
66	-	2	2	2	SCREW, DRIVE, RH, RoHS, 2 x .188	66
63	-	1	1	1	LIMITER, ADJUSTMENT BOLT	63
62	-	3	3	3	SCR, SET, SOC, CONE POINT, M3 X 4.0	62
61	-	2	2	2	SCR, SET, FLT POINT M5 X 20.0	61
59	-	-	-	1	SCR, HEX HD CAP, M4 X 6.0	59
56	-	-	-	1	FINGER, FEED	56
53	-	2	2	2	SCR, SKT HD CAP, RoHS, M4 X 16	53
49	-	-	-	1	SCR, SKT HD CAP M4 X 6.0	49
43	-	1	1	1	SUPPORT, INSULATION	43
42	-	1	1	1	SUPPORT, INSULATION	42
41	-	1	1	1	SCR, BHSC, RoHS (M8 X 25)	41
40	-	1	1	1	DISC, NUMBERED FA WIRE ADJUSTMENT	40
39	-	1	1	1	APPLICATOR SHIM PACK	39
38	-	1	1	1	RAM WASHER, PRECISION	38
33	-	2	2	2	SPRING, COMPRESSION	33
32	-	1	1	1	HEX HEAD, FLANGED, M5 X 8mm LONG	32
30	-	2	2	2	SCR, SKT HD CAP, RoHS, M4 X 5	30
29	-	1	1	1	PLATE, REAR STRIP GUIDE	29
27	-	2	2	2	SPRING, COMPRESSION	27
26	-	1	1	1	LEVER, DRAG RELEASE	26
25	-	1	1	1	DRAG, TERMINAL	25
24	-	1	1	1	GUIDE, STRIP, FRONT	24
23	-	1	1	1	SCR, SKT HD SHLDR 5.0 DIA X 6.0	23
22	-	1	1	1	WIRE FUNNEL	22
21	-	1	1	1	SCR, SKT HD CAP, RoHS, M4 X 8.0	21
20	-	1	1	1	WASHER, FLAT, REG M4	20
19	-	1	1	1	STRIPPER, SIDE FEED	19
18	-	1	1	1	HOLD DOWN, TERMINAL	18
17	-	1	1	1	REAR FLOATING SHEAR	17
16	-	4	4	4	SCR, SKT HD CAP, RoHS, M3 X 6	16
15	-	1	1	1	SHEAR PLATE, REAR	15
14	-	1	1	1	SHEAR HOLDER, REAR	14
13	-	1	1	1	INSERT, SHEAR	13
12	-	1	1	1	SPRING, COMPRESSION	12
11	-	1	1	1	STOP, SHEAR	11
10	-	1	1	1	TERMINAL SUPPORT	10
9	-	1	1	1	TERMINAL SUPPORT	9
8	-	1	1	1	ANVIL, SAND-BLASTED 16-14	8
7	-	1	1	1	GUIDE, CARRIER SCRAP	7
6	-	1	1	1	DEPRESSOR SHEAR, REAR	6
5	-	1	1	1	WIRE FUNNEL	5
4	-	1	1	1	BLOCK, FL CRIMPER SPACER	4
1	-	1	1	1	CRIMPER, SEMI FLAT 16-14	1
	-77	-27	-25	-22	PART NO	DESCRIPTION

PACIFIC VERSION
Shown on sheets 3 of 4 & 4 of 4
(Atlantic version shown on sheets 1 of 4 & 2 of 4)

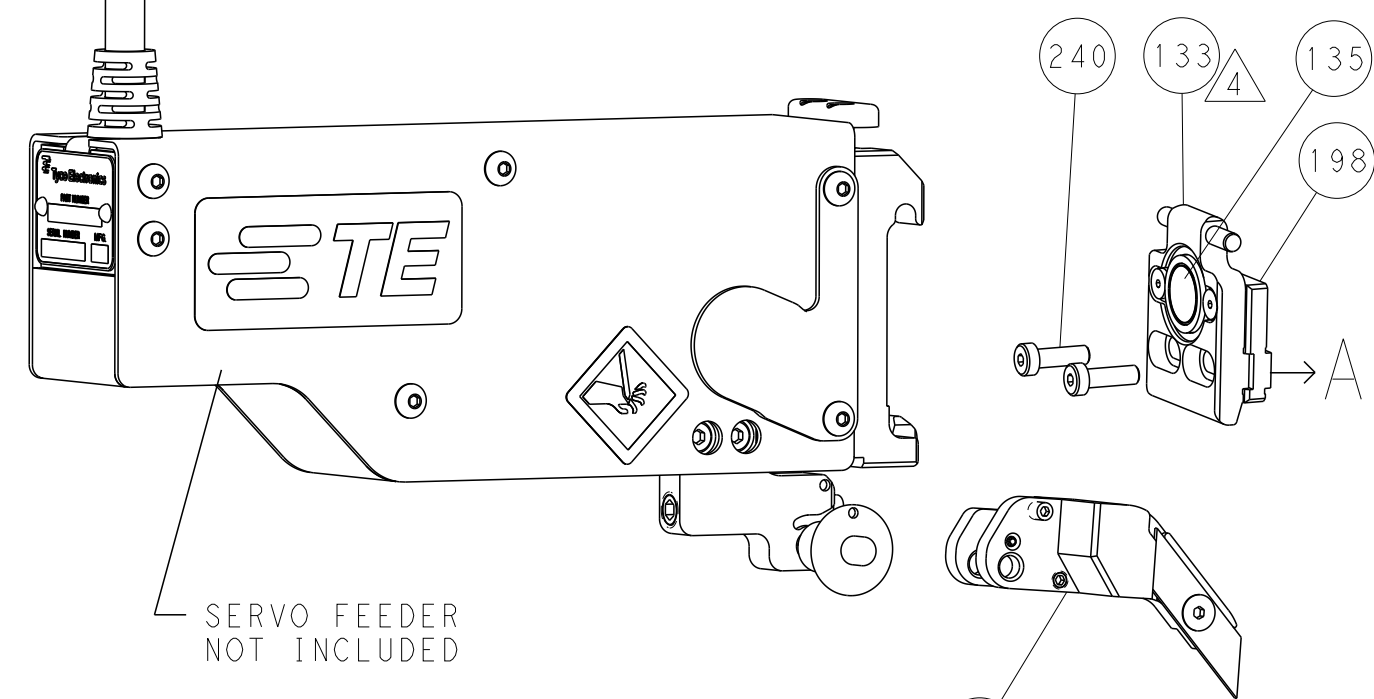
DIMENSIONS:		TOLERANCES UNLESS OTHERWISE SPECIFIED:		DWG		NAME	
mm	0 PLC	±		D. WEAVER	11OCT2011	TE Connectivity	
	1 PLC	±		G. HOFENER	11OCT2011	Harrisburg, PA 17105-3608	
	2 PLC	±				OCEAN SIDE FEED APPLICATOR	
	3 PLC	±				SIZE CAGE CODE DRAWING NO RESTRICTED TO	
	4 PLC	±				A1 00779 C=2151032	
	ANGLES	±				Customer Accessible Production Drawing SCALE 1:2 SHEET 3 OF 4 REV D	

LOC		DIST		REVISIONS			
A	66	P	LTH	DESCRIPTION	DATE	OWN	APVD
		-		SEE SHEET 1			

FEED TYPE PNEUMATIC

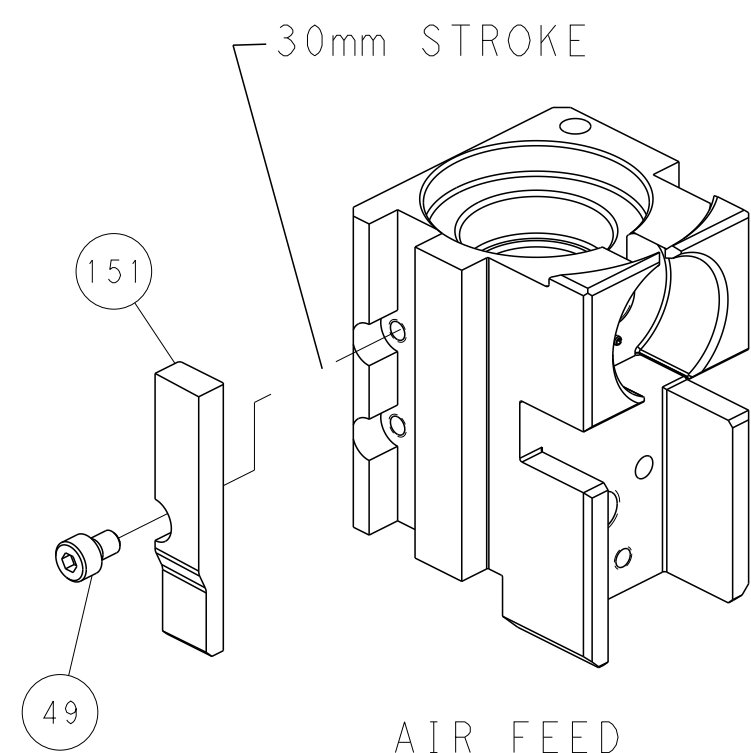


SERVO LATCH PLATE

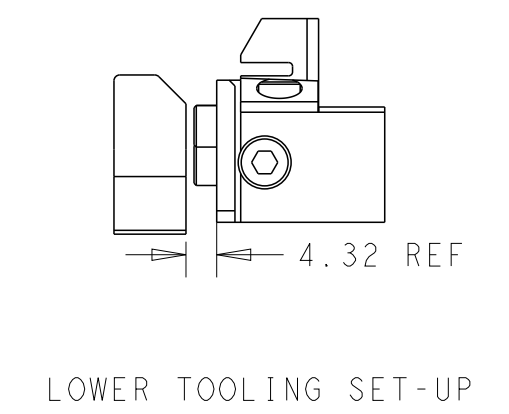
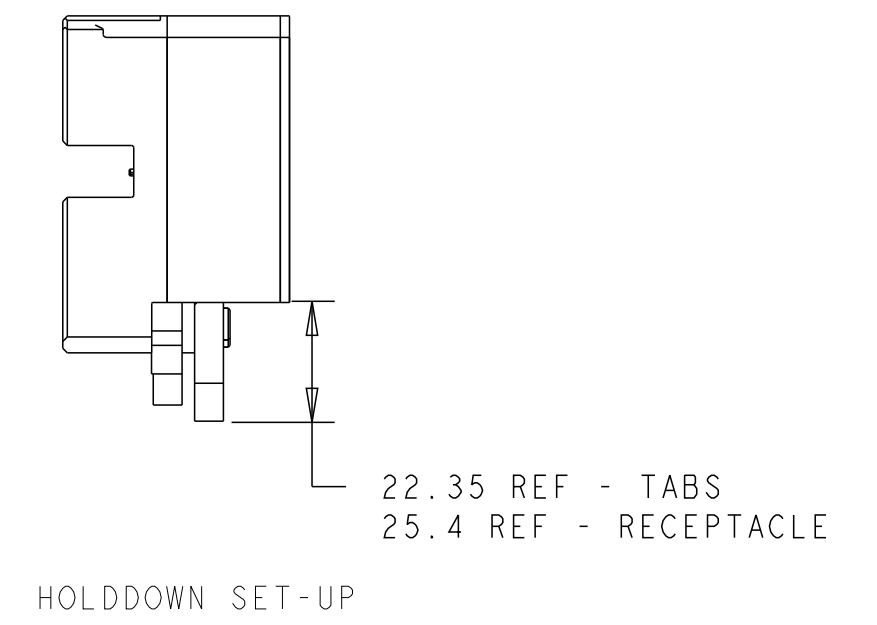
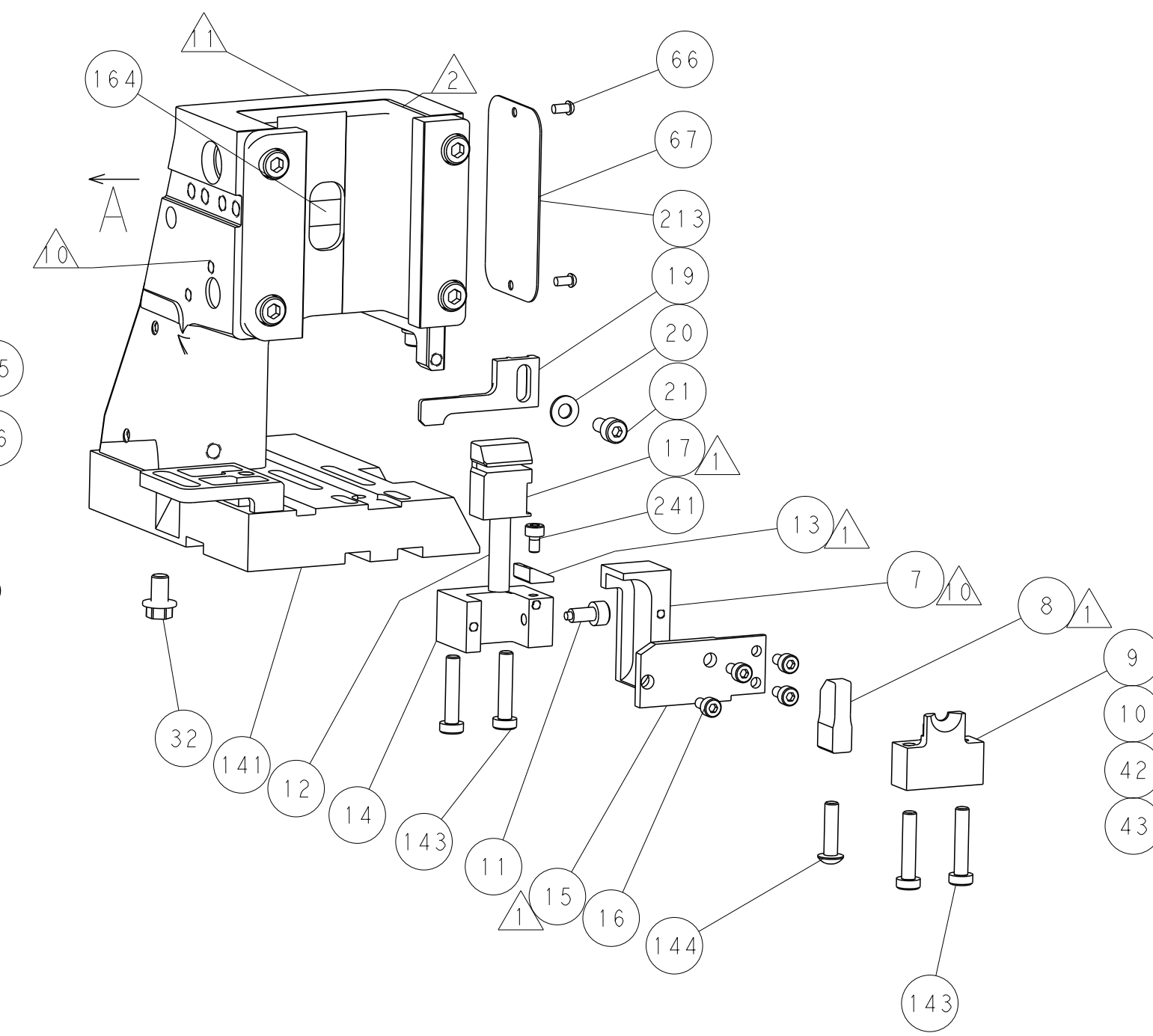
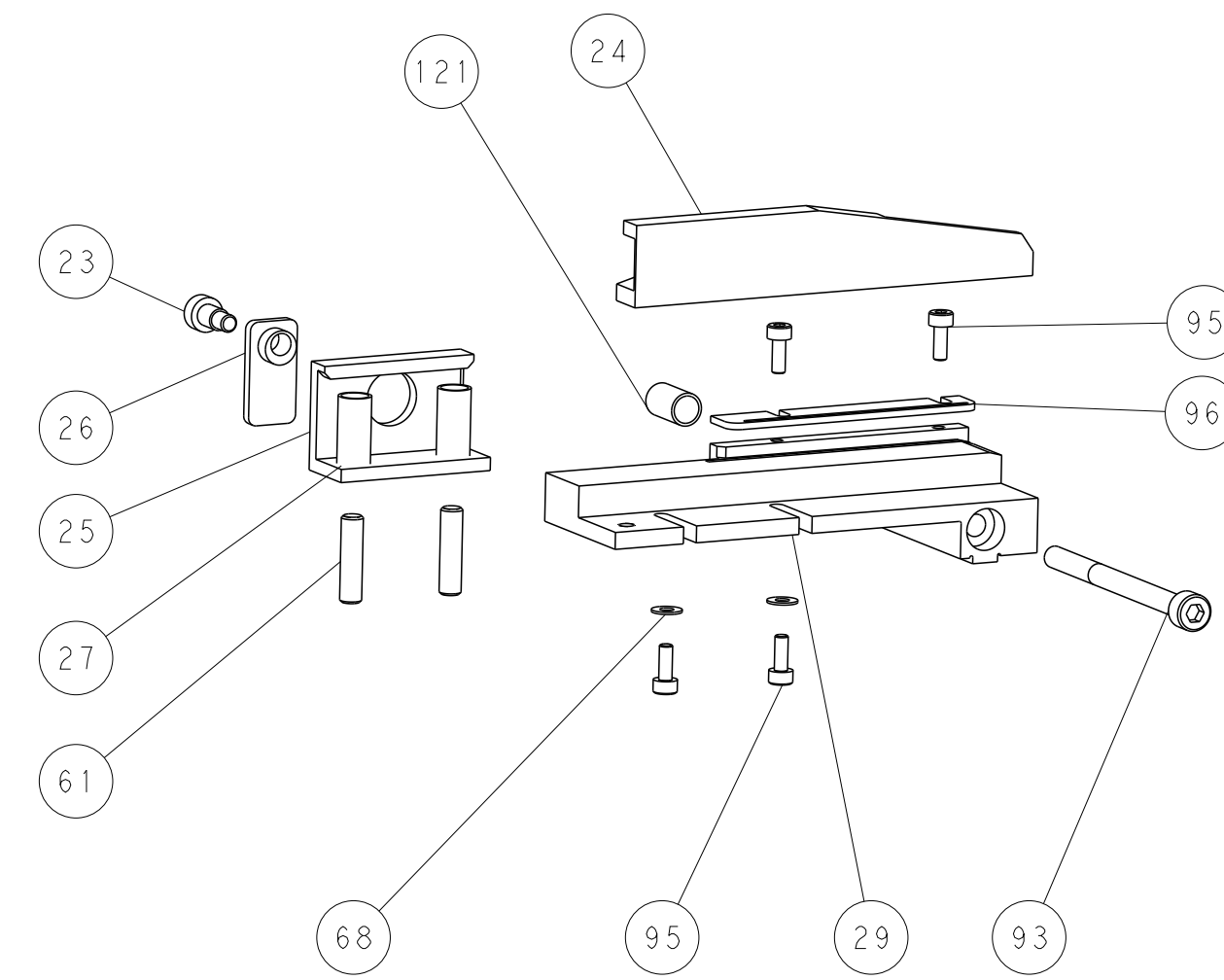
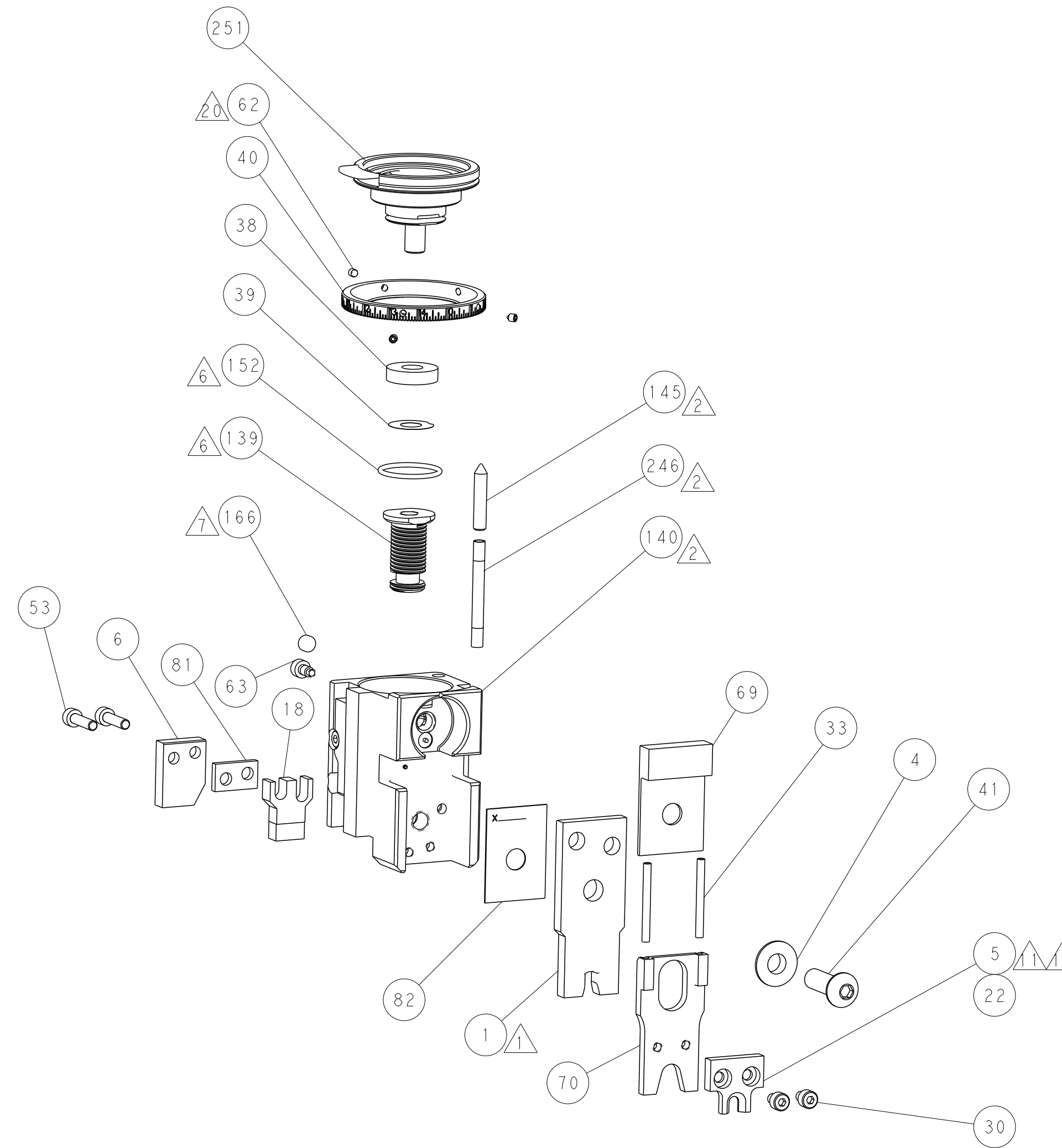


***FEED FINGER REPRESENTATION ABOVE MAY DIFFER FROM ACTUAL FEED FINGER THAT IS REQUIRED BY THIS APPLICATOR

CAM POSITION



AIR FEED



PACIFIC VERSION
 Shown on sheets 3 of 4 & 4 of 4
 (Atlantic version shown on sheets 1 of 4 & 2 of 4)

DIMENSIONS:		TOLERANCES UNLESS OTHERWISE SPECIFIED:		OWN	B. WEAVER	17OCT2011	TE Connectivity Harrisburg, PA 17105-3608
mm	0 PLC	±		CHK	G. HOFNER	17OCT2011	
	1 PLC	±		APVD	T. ELBIN	17OCT2011	NAME
	2 PLC	±					PRODUCT SPEC
	3 PLC	±					APPLICATION SPEC
	4 PLC	±					SIZE
	ANGLES	±					CAGE CODE
	FINISH	±					DRAWING NO
MATERIAL				WEIGHT			RESTRICTED TO