



MS-328-4 Form C Reed Sensor • Flatpack

Electrical Characteristics

Contact form		C
Contact rating max.	W / VA	5
Switching current max.	A	0.25
Carry current max.	A	1.5
Switching voltage max.	VDC	175
	VAC	120
Breakdown voltage min.	VDC	200
Contact resistance (initial) max.	mΩ	100
Insulation resistance min.	Ω	10 ⁹
Capacitance typ.	pF	1.0

Magnetical Characteristics

Pull in range available ¹	AT	15-30
---------------------------------------------	----	-------

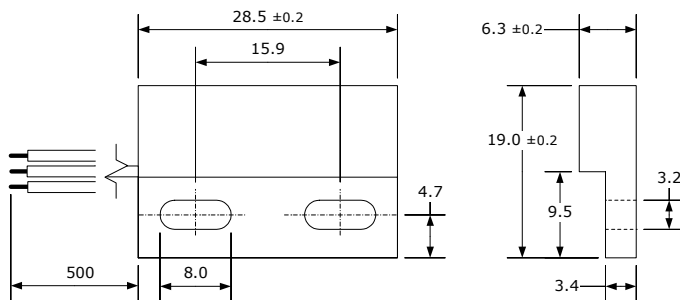
¹ AT range stated for **unmodified** Reed Switch

Operating Characteristics

Operate time (incl. bounce) max.	ms	0.7
Release time max.	ms	1.0
Switching frequency max.	Hz	100
Resonant frequency typ.	Hz	1,100
Vibration (50-2000 Hz)	g	30
Shock (1/2 sin 11 ms)	g	50
Operating temperature	°C	-20 to +85

Dimensions

in mm



COM black
 NC white
 NO grey

Wire: AWG 22, stripped and tinned

Ordering Information

Series	AT Range
MS-328-4	2 = 15-20 / 3 = 20-25 / 4 = 25-30

Ordering example: MS-328-4-2 describes MS-328-4 with 15-20 AT

Customized types available.

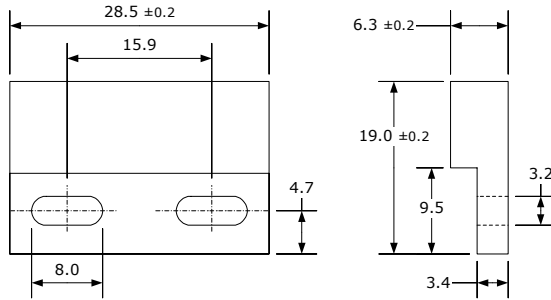
MS-328-4

Form C Reed Sensor • Flatpack



Matching Actuator MSM-328

in mm



Customized types and other magnet orientations available.