

PLEASE CHECK WWW.MOLEX.COM FOR LATEST PART INFORMATION

Part Number: [170001-0106](#)
Status: **Active**
Overview: [Mega-Fit Power Connectors](#)
Description: Mega-Fit™ Receptacle Housing, Dual Row, 6 Circuit, Glow-Wire Compliant, Bag

Documents:

3D Model	Test Summary TS-170001-001 (PDF)
Drawing (PDF)	Test Summary TS-76823-100 (PDF)
Product Specification PS-76823-100 (PDF)	RoHS Certificate of Compliance (PDF)

Agency Certification

CSA	LR19980
UL	E29179

General

Product Family	Crimp Housings
Series	170001
Application	Power, Wire-to-Board, Wire-to-Wire
Overview	Mega-Fit Power Connectors
Product Name	Mega-Fit™
UPC	887191246307

Physical

Circuits (maximum)	6
Circuits Detail	6
Color - Resin	Black
Flammability	94V-2
Gender	Male
Glow-Wire Compliant	Yes
Lock to Mating Part	Yes
Material - Resin	Nylon
Net Weight	2.960/g
Number of Rows	2
Packaging Type	Bag
Panel Mount	No
Pitch - Mating Interface	5.70mm
Pitch - Termination Interface	5.70mm
Polarized to Mating Part	Yes
Temperature Range - Operating	-40°C to +105°C

Electrical

Current - Maximum per Contact	23A
-------------------------------	-----

Material Info

Reference - Drawing Numbers

Product Specification	PS-76823-100
Sales Drawing	SD-170001-0100
Test Summary	TS-170001-001, TS-76823-100

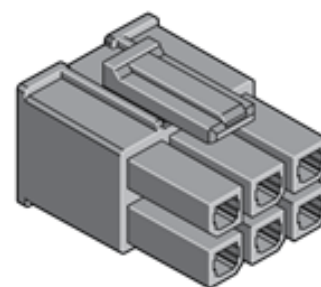


image - Reference only

Series

EU RoHS

ELV and RoHS Compliant
REACH SVHC Contains SVHC: No
Low-Halogen Status
Not Low-Halogen

China RoHS



Need more information on product environmental compliance?

Email productcompliance@molex.com
 For a multiple part number RoHS Certificate of Compliance, [click here](#)

Please visit the [Contact Us](#) section for any non-product compliance questions.

Search Parts in this Series

[170001Series](#)

Mates With

Mega-Fit™ Header [76825](#) , [76829](#) , [172064](#) , [172065](#)

Use With

Mega-Fit™ Crimp Terminals, [172063](#)