

**Specifications**

Insulation Resistance: 5,000MΩ min.  
 Withstanding Voltage: 1,000 V AC  
 Contact Resistance: 10mΩ max.  
 Current Rating: 5A  
 Operating Temp. Range: -55°C to +105°C

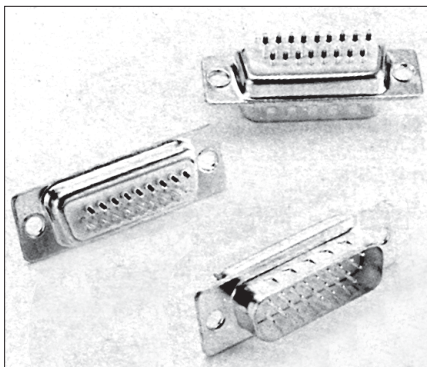
**Materials and Finish**

Insulator: Polyester Resin and  
 Glass Fiber reinforced (UL94V-0)  
 Contacts: Copper Alloy  
 Plating: Gold over Nickel



**Features**

- ⇨ Stamped contacts
- ⇨ Full gold plating



**Part Numbers**

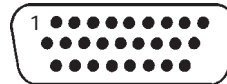
14 Contacts Part No. CT09-15PK211



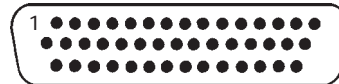
15 Contacts Part No. CT09-15P



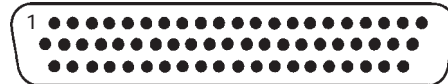
26 Contacts Part No. CT15-26P



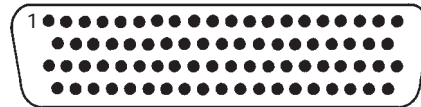
44 Contacts Part No. CT25-44P



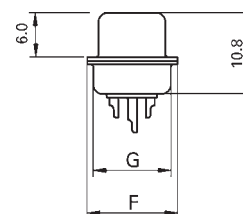
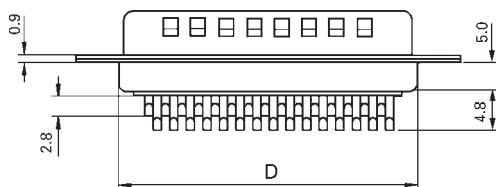
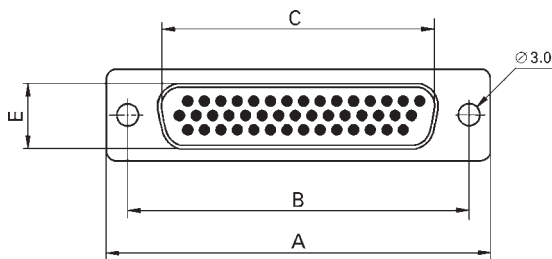
62 Contacts Part No. CT37-62P



78 Contacts Part No. CT50-78P



**Outline Connector Dimensions**



Part Number	No. of Contacts	A	B	C	D	E	F	G
CT09-15PK211	14	30.80	25.00	17.70	19.30	9.60	12.50	10.70
CT09-15P	15	30.80	25.00	17.70	19.30	9.60	12.50	10.70
CT15-26P	26	39.10	33.30	26.00	27.50	9.60	12.50	10.70
CT25-44P	44	53.00	47.00	40.20	41.30	9.60	12.50	10.70
CT37-62P	62	69.30	63.50	56.70	57.70	9.60	12.50	10.70
CT50-78P	78	66.90	61.10	54.00	55.30	13.30	15.40	13.60

**Specifications**

Insulation Resistance: 5,000MΩ min.  
 Withstanding Voltage: 1,000V AC  
 Contact Resistance: 10mΩ max.  
 Current Rating: 5A  
 Operating Temp. Range: -55°C to +105°C

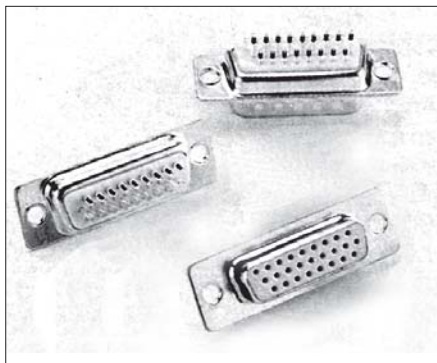
**Materials and Finish**

Insulator: Polyester Resin  
 and Glass Fiber reinforced (UL94V-0)  
 Contacts: Copper Alloy  
 Plating: Gold over Nickel



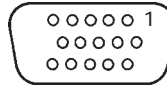
**Features**

- ⇨ Stamped contacts
- ⇨ Full gold plating

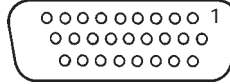


**Part Numbers**

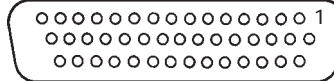
15 Contacts Part No. CT09-15S



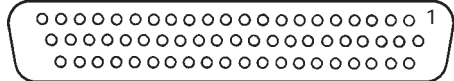
26 Contacts Part No. CT15-26S



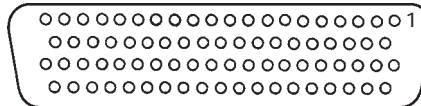
44 Contacts Part No. CT25-44S



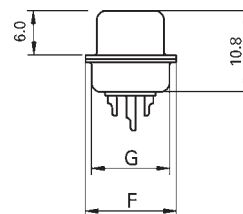
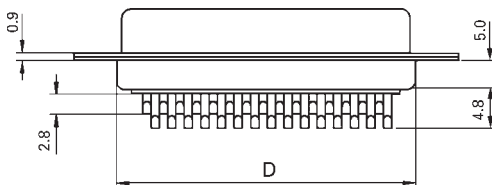
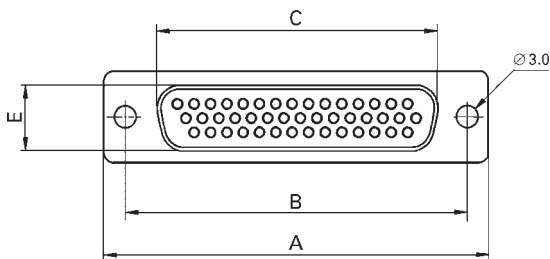
62 Contacts Part No. CT37-62S



78 Contacts Part No. CT50-78S



**Outline Connector Dimensions**



Part Number	No. of Contacts	A	B	C	D	E	F	G
CT09-15S	15	30.80	25.00	16.30	19.20	7.80	12.50	10.70
CT15-26S	26	39.10	33.30	24.60	27.70	7.80	12.50	10.70
CT25-44S	44	53.00	47.00	38.30	41.10	7.80	12.50	10.70
CT37-62S	62	69.30	63.50	54.80	57.30	7.80	12.50	10.70
CT50-78S	78	66.90	61.10	52.40	55.10	10.70	15.40	13.60