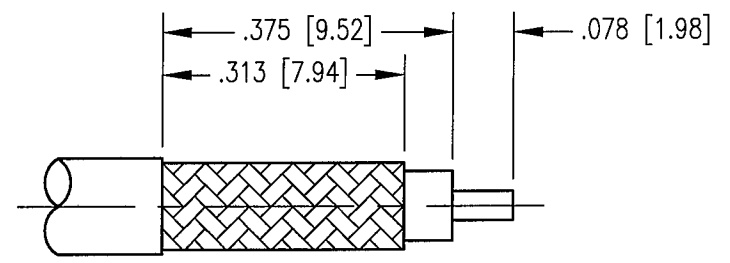
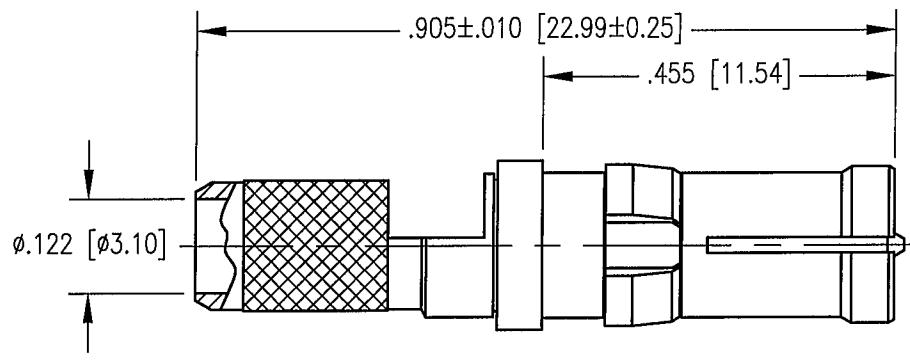
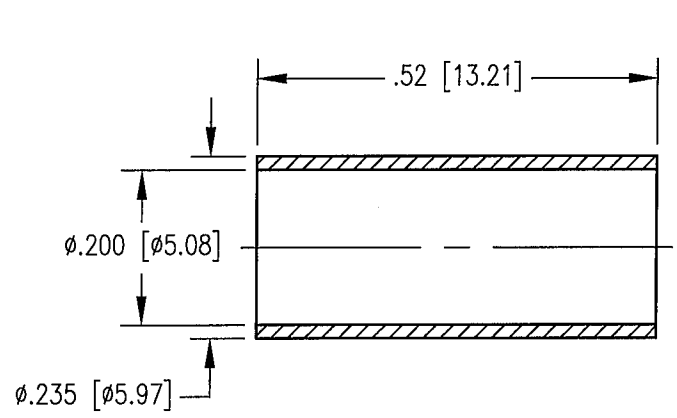


DWG. NO.		201-910-1160G	
REV	DESCRIPTION	BY	APPD
D	ECR 7281	MJE	[Signature]
		2/15/00	



CABLE TRIMMING DIMENSIONS

NOTES:

- MATERIALS:
 FRONT BODY: BERYLLIUM COPPER PER ASTM B196
 CLIP RING: BERYLLIUM COPPER PER ASTM B194
 FERRULE: COPPER ALLOY
 ALL OTHER METAL PARTS: BRASS PER ASTM B16
 INSULATOR: TEFLON PER ASTM D1710
- FINISH:
 BODY AND CENTER CONTACT: .000030 MIN. GOLD PER MIL-G-45204 OVER
 .000050 MIN. NICKEL PER QQ-N-290
 FERRULE: .000005 MIN. GOLD PER MIL-G-45204 OVER
 .000050 MIN. NICKEL PER QQ-N-290
 CLIP RING: .000100 MIN. NICKEL PER QQ-N-290
 OVER COPPER FLASH
- ELECTRICAL:
 IMPEDANCE: 50 OHMS NOMINAL
 FREQUENCY RANGE: 0 - 900 MHz
- DESIGNED FOR USE WITH RG-58 CABLE OR EQUIVALENT.
- FOR CABLING PROCEDURES USE CAP 9-01 WITH TRIMMING DIMENSIONS SHOWN.
- CRIMP FERRULE USING .213 HEX DIE.

PER ASME Y14.5M-1994
 UNLESS OTHERWISE SPECIFIED:
 DIMENSIONS ARE IN INCHES (MM)

TOLERANCES:
 DECIMALS .XX ± .01 [0.254]
 .XXX ± .005 [0.127]
 ANGLES ± 2° SCALE: 4:1

CUSTOMER DRAWING		
DRAWN JED DATE 3/2/00	CHECKED JWH DATE 3/2/00	
APPROVED JMC DATE 3/2/00	APPROVED KJT DATE 3/2/00	TITLE RDM STRAIGHT RECEPTACLE

NORTHROP GRUMMAN	
Winchester Electronics	400 Park Road Watertown, CT 06795
TITLE RDM STRAIGHT RECEPTACLE	
A	201-910-1160G
SHT.	OF
1	1
REV.	D