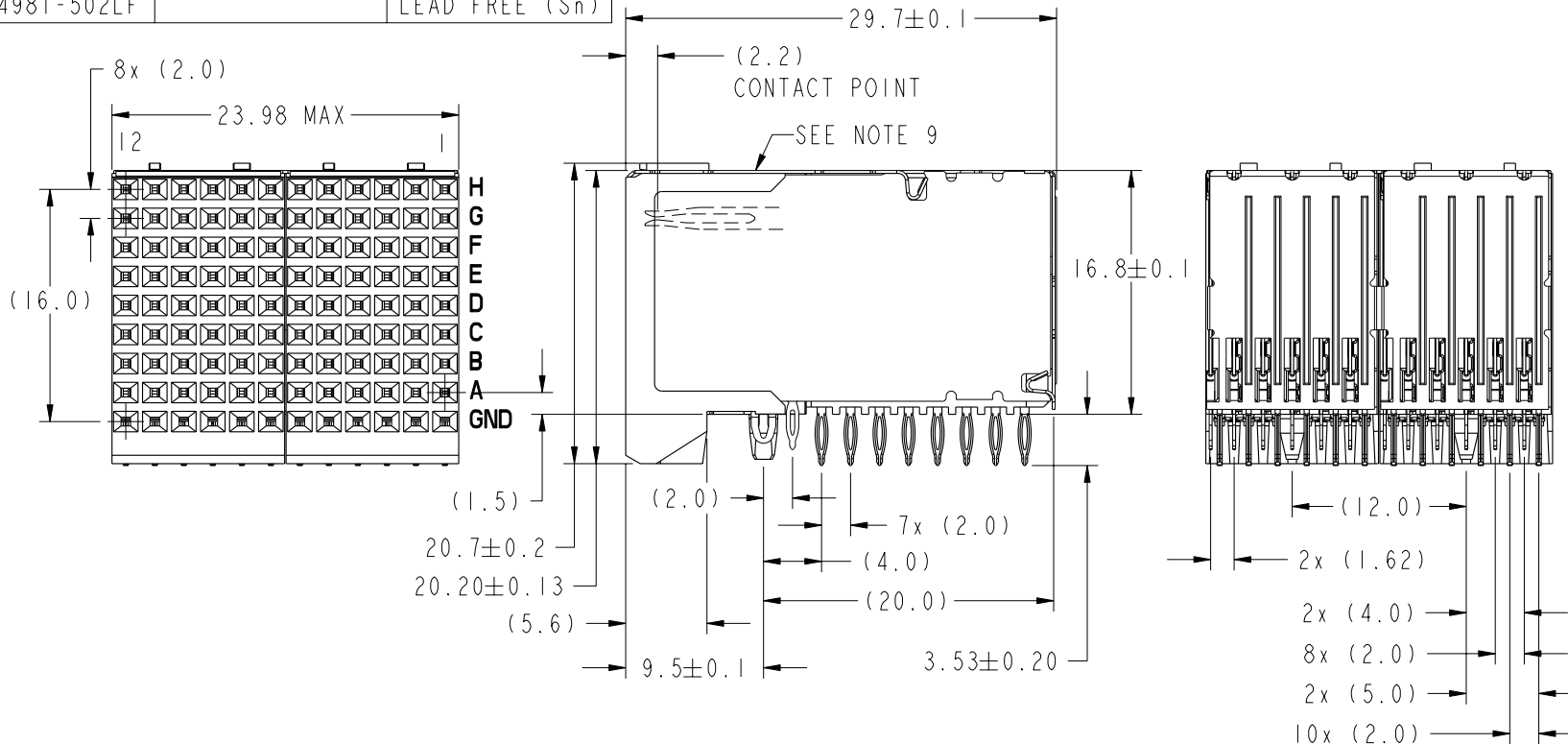




This document is the property of and embodies
 CONFIDENTIAL and PROPRIETARY information of FCI.
 No part of the information shown on this
 document may be used in any way or disclosed
 to others without the written consent of FCI.
 Copyright FCI.

PRODUCT NO.	CONTACT PLATING PERFORMANCE LEVEL	PRESS-FIT TAIL PLATING
74981-102	TELCORDIA CO	STANDARD (SnPb)
74981-102LF		LEAD FREE (Sn)
74981-302	CUSTOMER SPECIAL	STANDARD (SnPb)
74981-302LF		LEAD FREE (Sn)
74981-502	TELCORDIA UE	STANDARD (SnPb)
74981-502LF		LEAD FREE (Sn)



mat'l code SEE NOTE 2				tolerances unless otherwise specified		CUSTOMER	www.fciconnect.com	
ltr	ecn no.	dr	date	linear	0.X ±0.3	COPY	projection	
P	V06-0544	DCH	2006-06-09		0.XX ±0.10			
R	V07-0316	DCH	2007-04-25	angles	0.XXX ±0.050	MM	scale	title RIGHT ANGLE SIGNAL RECEPTACLE 8 ROW, 96 POSITION
S	V07-0604	DCH	2007-09-18		0° ±2°			
T	V08-0078	HTB	2008-02-15	dr	S. KLINE 2000-03-09	product family	METRAL 1000	code
-	-	-	-	enrg	M. HAHN 2000-03-09			
M	V04-0582	TAB	2004-06-11	chr	S. STONER 2000-08-24	A	74981	sheet
N	V05-0192	DAI	2005-04-15	appd	M. HAHN 2000-08-24			
sheet	revision	T	T	T	T			
index	sheet	1	2	3	4			



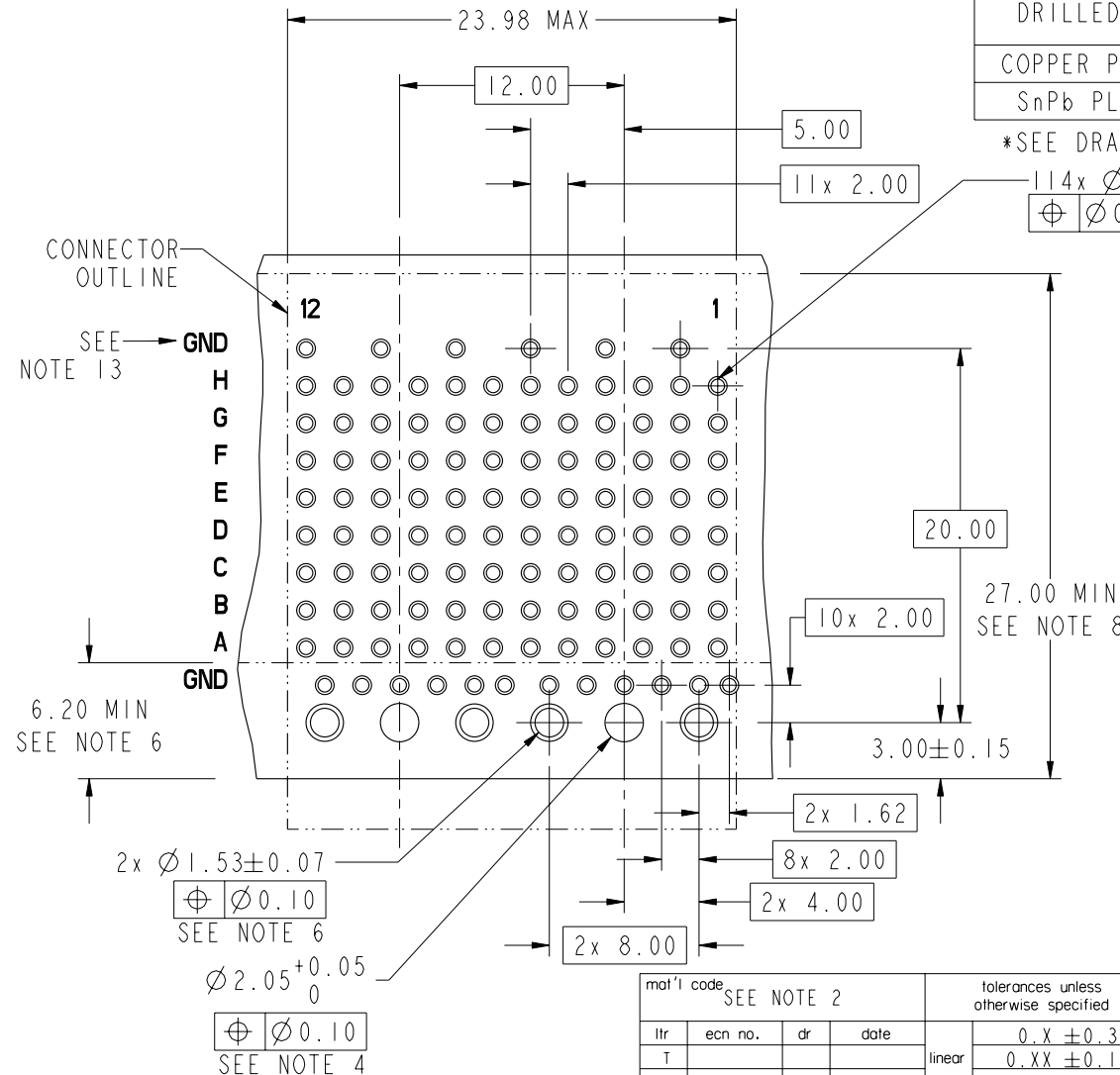
This document is the property of and embodies CONFIDENTIAL and PROPRIETARY information of FCI. No part of the information shown on this document may be used in any way or disclosed to others without the written consent of FCI. Copyright FCI.

PRODUCT NUMBER
SEE SHEET 1

PRESS-FIT HOLES

HOLE DIAMETER AFTER PLATING	$\varnothing 0.65 - \varnothing 0.80$ *	$\varnothing 1.53$
DRILLED HOLE	$\varnothing 0.81 - \varnothing 0.86$ ($\varnothing 0.85$ DRILL)	$\varnothing 1.61 - \varnothing 1.66$ ($\varnothing 1.65$ DRILL)
COPPER PLATING	0.025-0.050	0.025-0.050
SnPb PLATING	0.005-0.015	0.005-0.015

*SEE DRAWING 58351 FOR OTHER OPTIONS



RECOMMENDED PCB HOLE PATTERN-COMPONENT SIDE

mat'l code SEE NOTE 2				tolerances unless otherwise specified		CUSTOMER	FCI www.fciconnect.com	
ltr	ecr no.	dr	date	linear	0.X ± 0.3	COPY	title RIGHT ANGLE SIGNAL RECEPTACLE 8 ROW, 96 POSITION	
T				linear	0.XX ± 0.10	projection	product family METRAL 1000 code 213	
				angles	0.XXX ± 0.050		size dwg no 74981 sheet 2	
				dr	S. KLINE 2000-03-09	MM	cage code 22526 4	
				engr	M. HAHN 2000-03-09	← MM →		
				chr	S. STONER 2000-08-24	scale 1:1		
				appd	M. HAHN 2000-08-24			
sheet index	revision sheet							

PRODUCT NUMBER
SEE SHEET 1


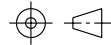
NOTES

1. UNLESS OTHERWISE SPECIFIED, ALL DIMENSIONS AND TOLERANCES ARE IN ACCORDANCE WITH ASME Y14.5M, 1994
2. HOUSING MATERIAL: LIQUID CRYSTAL POLYMER, GLASS FILLED FLAME RETARDANT PER UL94V-0
GROUND SHIELD MATERIAL: COPPER ALLOY
SIGNAL CONTACT MATERIAL: COPPER ALLOY
3. PLATING:
PRESS-FIT TAIL AREA: SnPb ON STANDARD
Sn ON LEAD FREE
MATING CONTACT POINTS: MEETS PERFORMANCE LEVEL SHOWN IN TABLE ON SHEET 1.
4. Ø2.05 HOLE IS UNPLATED.
5. Ø1.53 PLATED HOLES (2X) ARE FOR GROUNDS.
6. AVOID TRACES IN THIS AREA ON TOP OF PCB DUE TO EXPOSED GROUND SHIELD.
7. UNDERPLATING FOR SHIELD AND SIGNAL CONTACTS IS 1.3 µm Ni MIN.
8. COMPONENT KEEP OUT ZONE FOR PRESS BLOCK CLEARANCE.
9. PRODUCT MARKING: DATE AND LOT CODE.
10. SEE GS-20-018 FOR APPLICATION OF CONNECTOR TO PCB.
11. PCB THICKNESS RANGE: 1.3mm TO 3.4mm.
12. SEE PRODUCT SPECIFICATION GS-12-134 FOR PRODUCT PERFORMANCE CHARACTERISTICS.
13. THIS GROUND ROW OF VIA-HOLES ONLY REQUIRED FOR PREVIOUS REVISIONS OF THIS DESIGN WHERE THE TOP SHIELDS HAD EON PRESS-FIT. DUE TO INVENTORIES OF PREVIOUS VERSION, WE RECOMMEND THEY BE DESIGNED IN.
14. PRODUCTS WHERE THE PART NUMBER ENDS IN LF MEET EUROPEAN UNION DIRECTIVES AND OTHER COUNTRY REGULATIONS AS DESCRIBED IN GS-22-008.

ALL PRODUCTS WILL WITHSTAND EXPOSURE TO 260°C FOR 60 SECONDS IN A CONVECTION, INFRA-RED OR VAPOR PHASE REFLOW OVEN.



This document is the property of and embodies CONFIDENTIAL and PROPRIETARY information of FCI. No part of the information shown on this document may be used in any way or disclosed to others without the written consent of FCI. Copyright FCI.

mat'l code SEE NOTE 2				tolerances unless otherwise specified			CUSTOMER		 www.fciconnect.com		
ltr	ecn no.	dr	date	linear	0.X ±0.3		COPY		title RIGHT ANGLE SIGNAL RECEPTACLE 8 ROW, 96 POSITION		
T					0.XX ±0.10		projection				
				angles	0.XXX ±0.050				product family METRAL 1000 code size dwg no 213 A 74981 sheet 3		
					0° ±2°						
				dr	S. KLINE	2000-03-09	MM ←→		scale 2:1		
				engr	M. HAHN	2000-03-09					
				chr	S. STONER	2000-08-24	A		cage code 22526		
				appd	M. HAHN	2000-08-24					
sheet index	revision sheet										

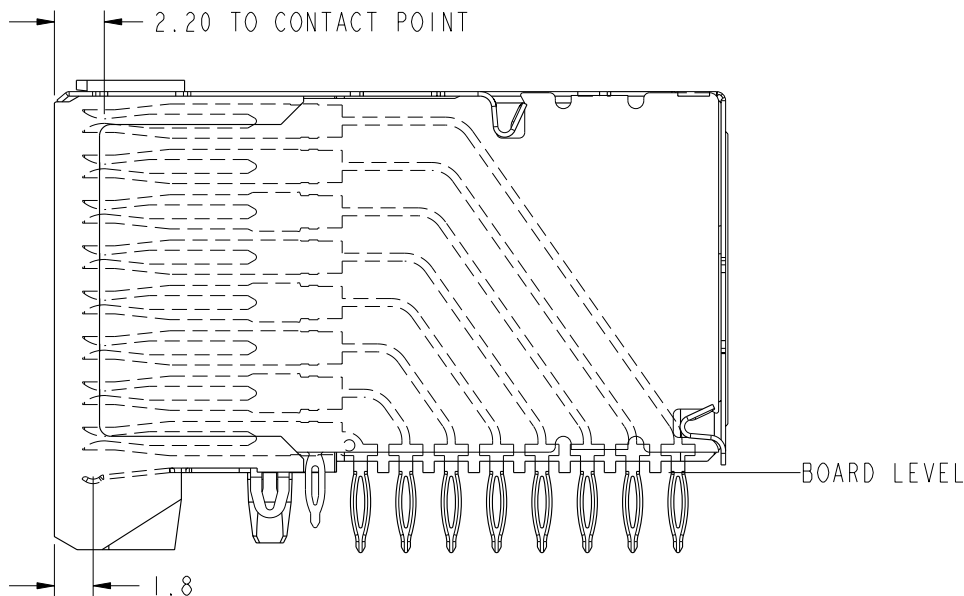
1 | 2

3 |

4


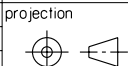
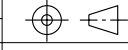
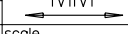
PRODUCT NUMBER
SEE SHEET 1

DISTANCE FROM CONTACT POINT TO BOARD	
CONTACT	DISTANCE
A	12.5
B	15.9
C	18.9
D	21.9
E	25.0
F	28.0
G	31.1
H	34.1



CONTACT POINT AND SKEW

This document is the property of and embodies
 CONFIDENTIAL and PROPRIETARY information of FCJ.
 No part of the information shown on this
 document may be used in any way or disclosed
 to others without the written consent of FCJ.
 Copyright FCJ.

mat'l code SEE NOTE 2				tolerances unless otherwise specified		CUSTOMER		 www.fciconnect.com			
ltr	ecm no.	dr	date	linear	0.X ± 0.3	COPY		 title RIGHT ANGLE SIGNAL RECEPTACLE 8 ROW, 96 POSITION			
T				linear	0.XX ± 0.10	projection					
				angles	0.XXX ± 0.050	 $0^{\circ} \pm 2^{\circ}$					
				dr	S. KLINE 2000-03-09	MM		product family	METRAL 1000	code	
				enr	M. HAHN 2000-03-09	 scale 3:1		size	dwg no	213	sheet
				chr	S. STONER 2000-08-24			A	74981	4	
				appd	M. HAHN 2000-08-24						
sheet index	revision sheet										

1 | 2

Pro/E

3 |

cage code 22526

4