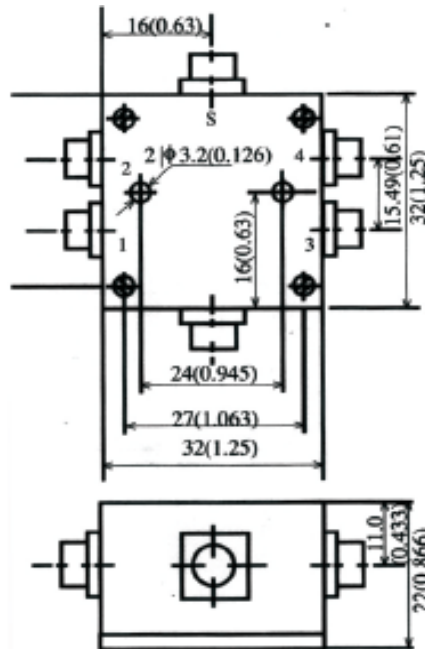


## 5-Way Power Divider

P/N: JXWBGF-T-5-5-500-B12

Frequency Range(MHz)	5-500
Insertion Loss(dB)	L: 0.2/0.8 Typ/Max
	M: 0.6/1.5 Typ/Max
	U: 1.5/2.0 Typ/Max
Isolation(dB)	L: 25/20 Typ/Min
	M: 23/20 Typ/Min
	U: 20/18 Typ/Min
Phase Unbalance(°)	8 max
Amplitude Unbalance(dB)	0.6 max
Connector	BNC-Female
Operating Temperature(°C)	-40 ~ +80
Storage Temperature(°C)	-55 ~ +85
Size(mm)	32 x 32 x 22
Net Weight(Kg)	0.095 Around

### Outline Drawing



For current data sheets, please contact: [sales@aacix.com](mailto:sales@aacix.com)