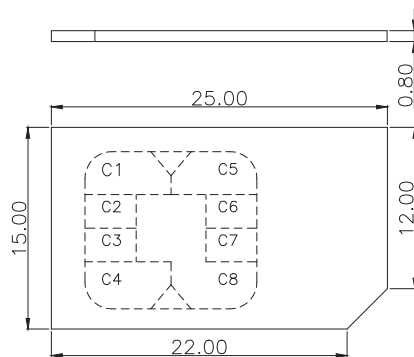


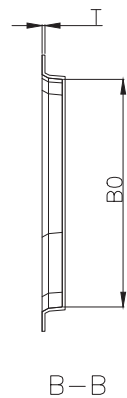
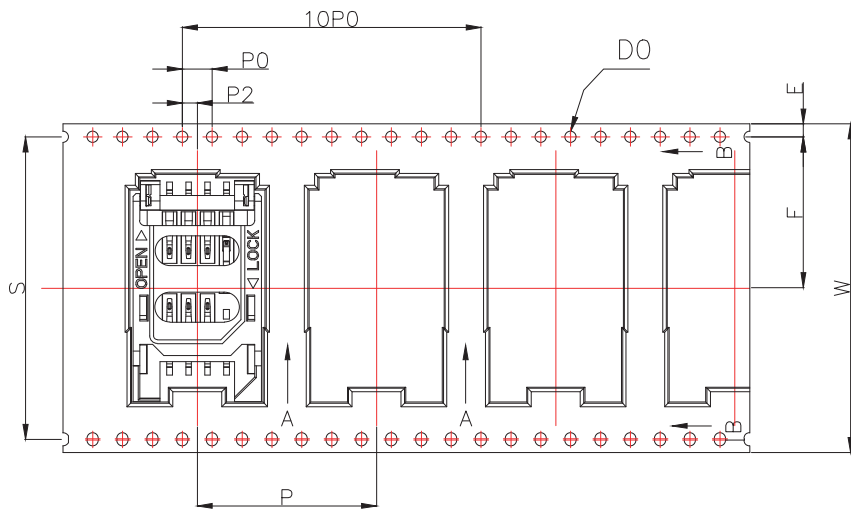
MINI SIM CARD	
Pin No.	NAME
C1	VCC OF SIM
C2	RST OF SIM
C3	CLK OF SIM
C5	GND OF SIM
C6	VPP OF SIM
C7	I/O OF SIM
C4/C8	N/A



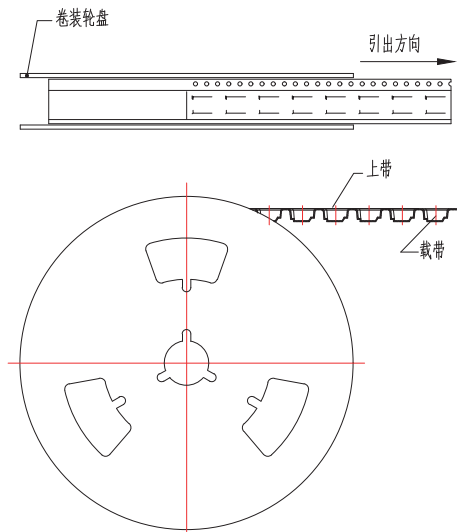
PAD AREA
 KEEP OUT AREA

RECOMMENDED PCB LAYOUT
 GENERAL TOLERANCE ± 0.05

MANUFACTURE DWG			东莞市讯普电子科技有限公司 DongGuan XunPu Electronics Co.,Ltd	
UNLESS OTHERWISE SPECIFIED TOLERANCES			TITLE: MINI SIM CARD HINGED 全塑 8P无柱	
DECIMALS:	ANGLES:	PAR	SIM-107B-ARP8	
X.: ± 0.20	X': $\pm 2'$	DWN		
X.X: ± 0.15	X.X': $\pm 1'$	CHKD		
X.XX: ± 0.10		APVD		
		SCALE: 1:1	UNIT: MM	
		CUSTOMER COPY	SIZE: A4	SHEET: 1F1
				REV: A



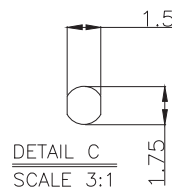
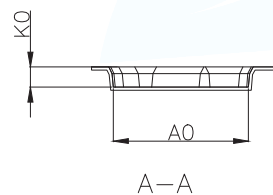
卷装示意图仅供参考



330X100X44

尺寸栏	
E	1.75±0.10
S	40.40±0.10
F	20.20±0.15
P2	2.00±0.15
∅D0	1.50 ^{+0.10} _{-0.00}
∅D1	
P0	4.00±0.10
A1	
W	44.00±0.30
P	24.00±0.10
A0	18.10±0.20
B0	30.50±0.20
K0	2.70±0.10
T	0.40±0.05

生产参数	
模数	253模
颗数	1010颗
卷轮	13"/44
包装数	1000颗

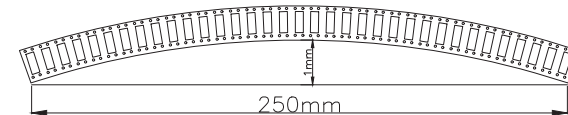


说明:

- 10个边孔的累计公差不能超过±0.2mm.
- 材料规格: 黑色PS, 厚度0.40mm.
- 15英寸卷轮卷装长度: 24.29米. (零件包装长度: 24米).
- 13寸卷轮包装零件总颗数: 1010颗. (实际包装零件颗数: 1000颗).

5. 所有尺寸设计参照EIA-481-C-2003.

6. 载带在250mm长度以内最大弯曲度不超过1mm (见下图).



MANUFACTURE DWG		东莞市讯普电子科技有限公司 DongGuan XunPu Electronics Co., Ltd	
UNLESS OTHERWISE SPECIFIED TOLERANCES			TITLE: MINI SIM CARD HINGED 全塑 8P无柱
DECIMALS:	ANGLES:		PAR SIM-107B-ARP8
X.: ±0.20	X.: ±2'		DWN
X.X: ±0.15	X.X': ±1'		CHKD
X.XX: ±0.10		APVD	SCALE: 1:1 UNIT: MM
CUSTOMER COPY		SIZE: A4	SHEET: 1F1 REV: A