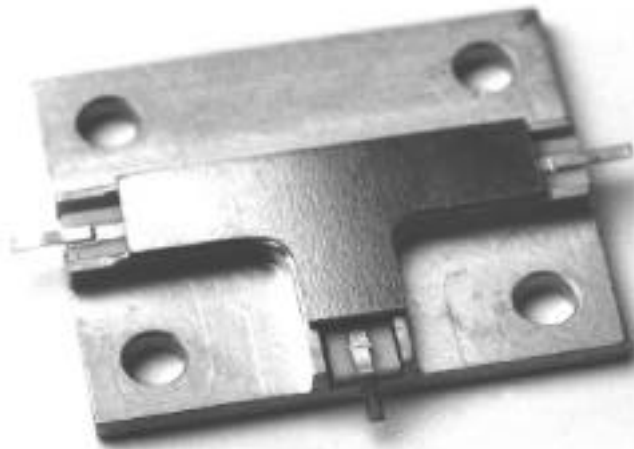


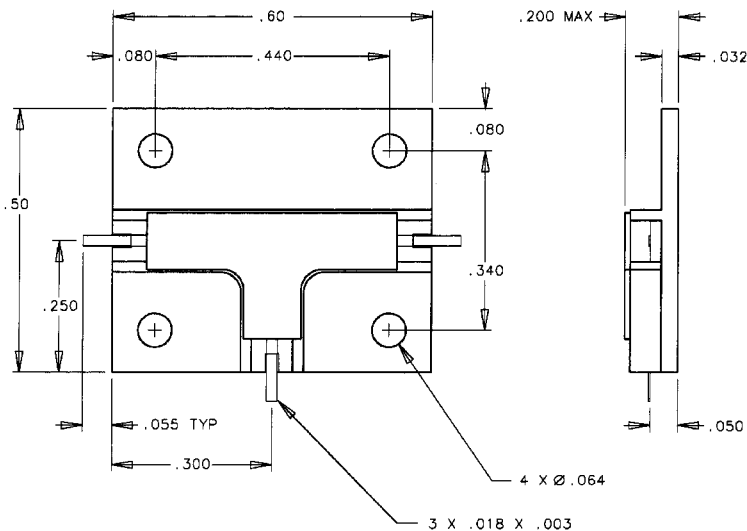
SINGLE POLE, DOUBLE THROW COMMERCIAL MICROSTRIP MODULES



ELECTRICAL CHARACTERISTICS

PART #	TYPE	FREQ RANGE GHz	LOSS dB	ISO dB	VSWR	SWITCH SPEED ns	RF POWER dBm	DC SUPPLY Volts
6912	SP2T R	9-10.1	1.1	50	1.5:1	1000	40	Analog
6913	SP2T R	.01-16	1.5	50	1.8:1	20	25	Analog

PACKAGE OUTLINE



DESCRIPTION

High isolation transmit/receive switch designed for high frequency applications up to 16 GHz. These modules are ideal for large volume manufacturing.

ADDITIONAL FEATURES (#6912)

- Two-tone intermodulation distortion
- 2nd order: +55 dBm

CONNECTORS

- Pin

OPERATING ENVIRONMENT

- Operating Temperature: 20 to +85°C
- Storage Temperature: -65 to +125°C
- Impedance: 50 ohm
- Control: Analog

APPLICATIONS

- Point-to-point microwave radio
- High speed modems
- Antenna diversity in cellular/PCS radio units