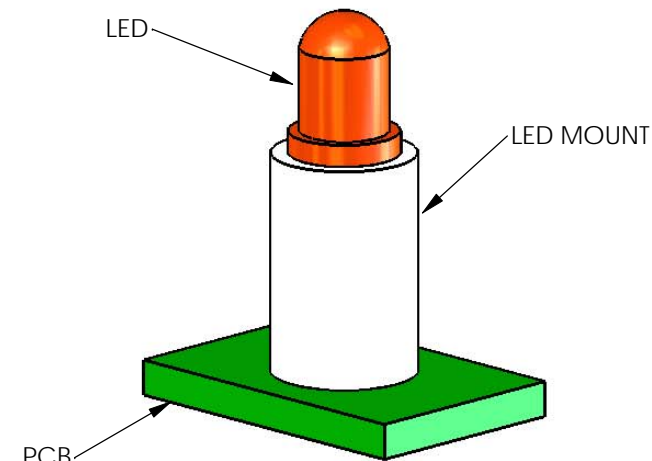
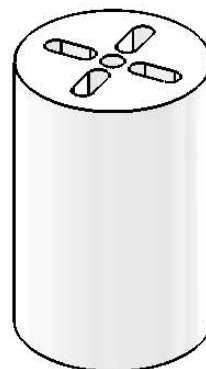
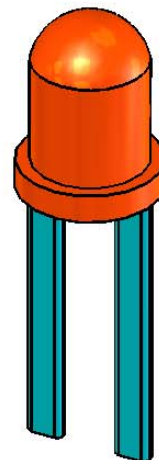
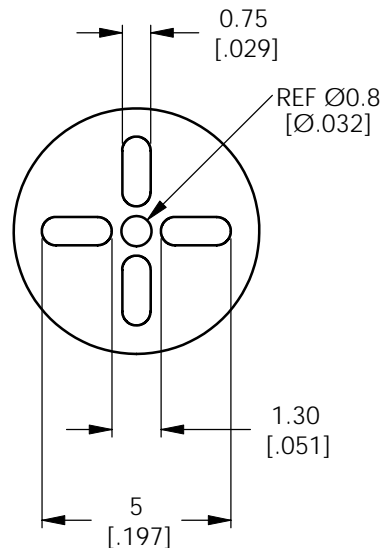
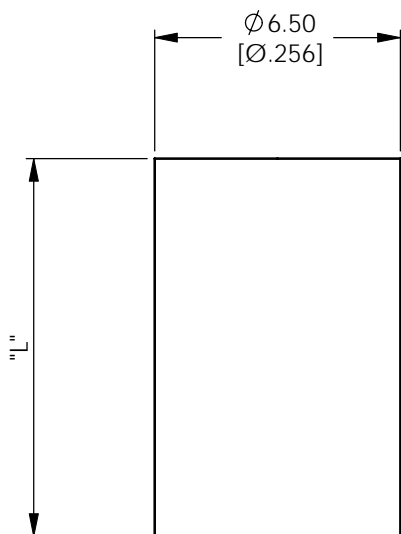


AVAILABLE BY SPECIAL ORDER NAFTA REGION ONLY

REV.	MODIFICATION.	DATE	DRN
01	NEW DWG	25/05/01	JPM
02	SCN04-093	25/05/01	OW
03	SCN04-096	25/05/01	OW
04	SCN04-100	14/10/04	OW
05	ECN05-021	26/01/05	OW
06	CO-2010553	09/02/09	OW



TYPICAL APPLICATION VIEW



- NOTES:  
 1) FOR USE WITH 5mm, T-1 3/4 LEDs.  
 2) PARTS AVAILABLE IN 1MM INCREMENTS.  
 3) SPECIAL LENGTHS AVAILABLE BY SPECIAL ORDER.

INFORMATION CONTAINED IN THIS DOCUMENT IS CONFIDENTIAL TO RICHCO INTERNATIONAL Co. Ltd. AND MAY NOT BE DISCLOSED OR REPRODUCED IN WHOLE OR PART WITHOUT THEIR WRITTEN CONSENT

	ALL PRIMARY DIMENSIONS IN mm ALL SECONDARY DIMENSIONS IN INCHES METRIC GENERAL TOLERANCES ±0.25 ARE PRIMARY UNLESS OTHERWISE STATED 1 DECIMAL PLACE ± 2 DECIMAL PLACES ± ANGULAR ±1° IMPERIAL GENERAL TOLERANCES ±0.010 ARE FOR REFERENCE UNLESS OTHERWISE 1 DECIMAL PLACE ± 2 DECIMAL PLACES ± ANGULAR ±1°
	MATERIAL: PVC UL94 V-0 (RMS-388) COLOUR: BLACK

TITLE: LED MOUNTS		PART No: LEDM-3-XX	
DRG No: 786-9020	NPR REF: N/A	SIZE A4	

PART No.	LENGTH	DRN	DATE	CHKD	DATE	SCALE	SHEET No
LEDM-3-02 - LEDM-3-30	2.0mm - 30mm	OW	14/10/04	NJB	14/10/04	NTS	1 OF 1