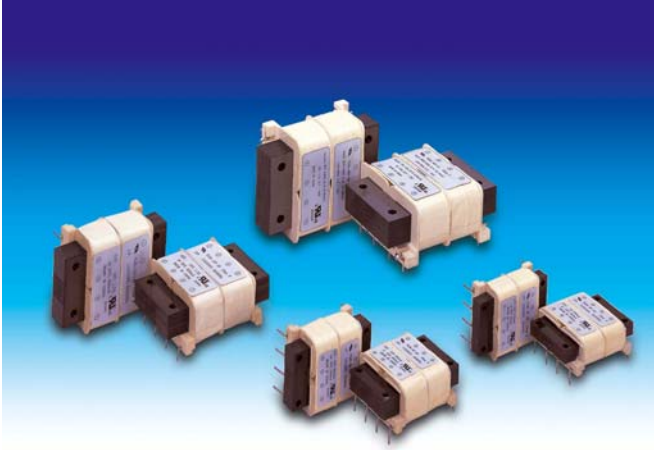


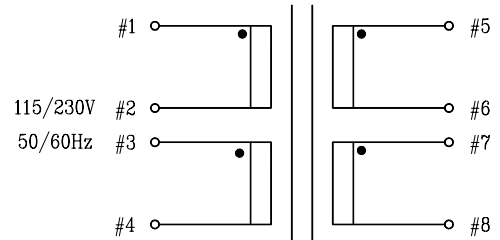
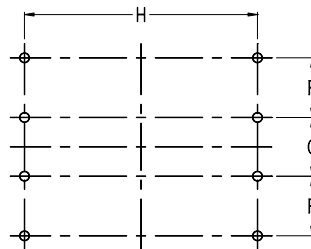
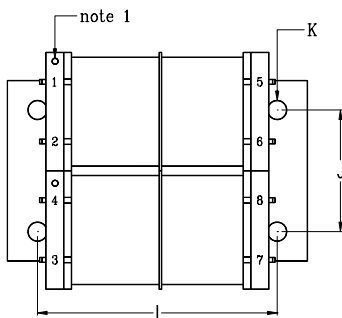
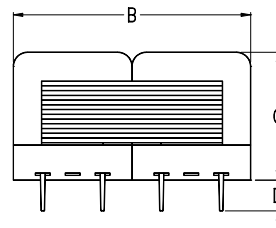
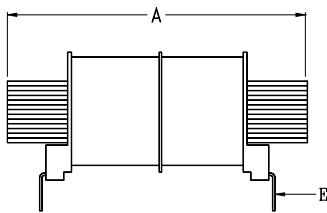
TWIN-BOBBIN
TRANSFORMER

TWIN-BOBBIN TRANSFORMER



TL66 Series

- Power – 2VA to 48VA
- Dielectric Strength – 1500Vrms
- Primary – Dual primary (115V/230V 50/60Hz)
- Secondary – Series or parallel
- Insulation Class – Class F (155°C)
- Safety Approvals – UL506, CSA C22.2 #66



Product Series	Dimension (mm)										
	A	B	C	D	E	F	G	H	I	J	K
2 (VA)	47.5	39.6	16.5	6.35	0.5×0.8	9.5	9.5	40.6	41.24	22.2	Ø2.8
6 (VA)	47.5	39.6	21.6	6.35	0.5×0.8	9.5	9.5	40.6	41.24	22.2	Ø2.8
12 (VA)	63.5	50.8	27.0	6.35	0.5×0.8	12.7	12.7	50.8	50.8	25.7	Ø3.5
48 (VA)	80.0	63.5	34.4	6.35	1.0×1.0	15.24	16.8	55.4	64	32	Ø4.5
Tolerance (mm)	±1.0	±1.0	±1.0	±1.0	±0.1	±0.2	±0.3	±0.5	±0.5	±0.5	max.

Note : Dimension "E" is pin size, and dimension "K" is the maximum allowable screw size.

TWIN-BOBBIN
TRANSFORMER

Product Series	Part Number	Input Voltage (V)	Secondary RMS Rating	
			Series	Parallel
2VA	TL66-2F-10	2 x 115	10V C.T. @0.25A	5V @0.5A
	TL66-2F-12	2 x 115	12.6V C.T. @0.2A	6.3V @0.4A
	TL66-2F-16	2 x 115	16V C.T. @0.15A	8V @0.3A
	TL66-2F-20	2 x 115	20V C.T. @0.12A	10V @0.25A
	TL66-2F-24	2 x 115	24V C.T. @0.1A	12V @0.2A
	TL66-2F-30	2 x 115	30V C.T. @0.085A	15V @0.17A
	TL66-2F-34	2 x 115	34V C.T. @0.075A	17V @0.15A
	TL66-2F-40	2 x 115	40V C.T. @0.06A	20V @0.12A
	TL66-2F-56	2 x 115	56V C.T. @0.045A	28V @0.09A
	TL66-2F-88	2 x 115	88V C.T. @0.028A	44V @0.056A
	TL66-2F-120	2 x 115	120V C.T. @0.02A	60V @0.04A
	TL66-2F-230	2 x 115	230V C.T. @0.01A	115V @0.02A
6VA	TL66-6F-10	2 x 115	10V C.T. @0.6A	5V @1.2A
	TL66-6F-12	2 x 115	12.6V C.T. @0.45A	6.3V @0.9A
	TL66-6F-16	2 x 115	16V C.T. @0.35A	8V @0.7A
	TL66-6F-20	2 x 115	20V C.T. @0.3A	10V @0.6A
	TL66-6F-24	2 x 115	24V C.T. @0.25A	12V @0.5A
	TL66-6F-30	2 x 115	30V C.T. @0.2A	15V @0.4A
	TL66-6F-34	2 x 115	34V C.T. @0.17A	17V @0.34A
	TL66-6F-40	2 x 115	40V C.T. @0.15A	20V @0.3A
	TL66-6F-56	2 x 115	56V C.T. @0.1A	28V @0.2A
	TL66-6F-88	2 x 115	88V C.T. @0.065A	44V @0.13A
	TL66-6F-120	2 x 115	120V C.T. @0.05A	60V @0.1A
	TL66-6F-230	2 x 115	230V C.T. @0.025A	115V @0.05A
12VA	TL66-12F-10	2 x 115	10V C.T. @1.2A	5V @2.4A
	TL66-12F-12	2 x 115	12.6V C.T. @0.9A	6.3V @1.8A
	TL66-12F-16	2 x 115	16V C.T. @0.7A	8V @1.4A
	TL66-12F-20	2 x 115	20V C.T. @0.6A	10V @1.2A
	TL66-12F-24	2 x 115	24V C.T. @0.5A	12V @1A
	TL66-12F-30	2 x 115	30V C.T. @0.4A	15V @0.8A
	TL66-12F-34	2 x 115	34V C.T. @0.34A	17V @0.68A
	TL66-12F-40	2 x 115	40V C.T. @0.3A	20V @0.6A
	TL66-12F-56	2 x 115	56V C.T. @0.2A	28V @0.4A
	TL66-12F-88	2 x 115	88V C.T. @0.13A	44V @0.26A
	TL66-12F-120	2 x 115	120V C.T. @0.1A	60V @0.2A
	TL66-12F-230	2 x 115	230V C.T. @0.05A	115V @0.1A
48VA	TL66-48F-10	2 x 115	10V C.T. @4.8A	5V @9.6A
	TL66-48F-12	2 x 115	12.6V C.T. @3.8A	6.3V @7.6A
	TL66-48F-16	2 x 115	16V C.T. @3A	8V @6A
	TL66-48F-20	2 x 115	20V C.T. @2.4A	10V @4.8A
	TL66-48F-24	2 x 115	24V C.T. @2A	12V @4A
	TL66-48F-30	2 x 115	30V C.T. @1.6A	15V @3.2A
	TL66-48F-34	2 x 115	34V C.T. @1.4A	17V @2.8A
	TL66-48F-40	2 x 115	40V C.T. @1.2A	20V @2.4A
	TL66-48F-56	2 x 115	56V C.T. @0.85A	28V @1.7A