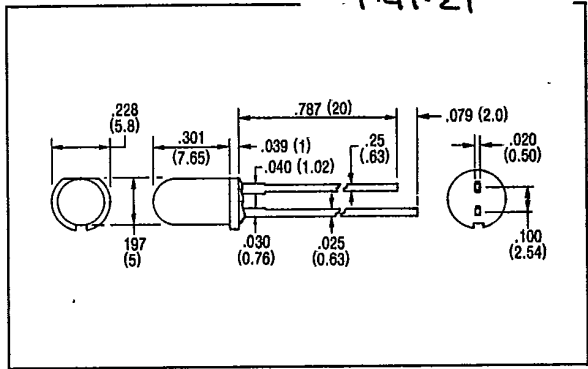
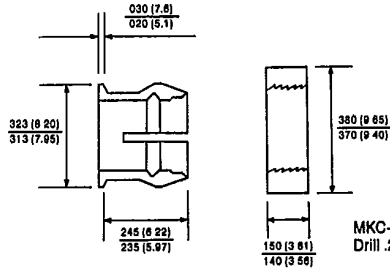


HARD LEAD T-1 3/4 LED LAMPS

FEATURES

- Sturdy leadframe allows for wire wrapping applications.
- Available in clear or diffused.
- Wide viewing angle.

OPTIONAL MOUNTING RING(R) AND CLIP(C)



MKC-200 R/C can be used with panels up to .125 inch (3.18 mm) thick.
 Drill .257 inch dia. (6.53 mm) hole ("F" drill).

MAXIMUM RATINGS (Ta = 25°C)

PART NO.	FORWARD CURRENT (If) (mA)	REVERSE VOLTAGE (Vr) (V)	POWER DISSIPATION (Pd) (mW)	OPERATING TEMPERATURE (T _{opr}) (°C)	STORAGE TEMPERATURE (T _{stg}) (°C)
MT130-HLR	20	4	56	-20 ~ 75	-30 ~ 100
MT140-HLR	20	4	56	-20 ~ 75	-30 ~ 100
MT130-HLG	25	4	70	-20 ~ 75	-30 ~ 100
MT140-HLG	25	4	70	-20 ~ 75	-30 ~ 100
MT130-HLY	25	4	70	-20 ~ 75	-30 ~ 100
MT140-HLY	25	4	70	-20 ~ 75	-30 ~ 100
MT130-HLO	25	4	70	-20 ~ 75	-30 ~ 100
MT140-HLO	25	4	70	-20 ~ 75	-30 ~ 100

OPTO-ELECTRICAL CHARACTERISTICS (Ta = 25°C)

PART NO.	MATERIAL	LENS COLOR	VIEWING ANGLE	LUMINOUS INTENSITY (mcd)			FORWARD VOLTAGE (V)			REVERSE CURRENT		PEAK WAVELENGTH (nm)	SPEC. LINE HALF WIDTH (nm)
				typ.	min.	typ. at mA	typ.	max. at mA	μA	Vr			
MT130-HLR	GaP/GaP	Red/Clear	50°	.6	3.5	15	2.1	2.8	20	5	4	700	100
MT140-HLR	GaP/GaP	Red/Diff.	80°	.4	1.5	15	2.1	2.8	20	5	4	700	100
MT130-HLG	GaP/GaP	Green/Clear	50°	3.0	17.0	15	2.1	2.8	20	5	4	565	25
MT140-HLG	GaP/GaP	Green/Diff.	80°	.8	5.0	15	2.1	2.8	20	5	4	565	25
MT130-HLY	GaAsP/GaP	Yellow/Clear	50°	1.0	9.0	15	2.1	2.8	20	100	4	585	32
MT140-HLY	GaAsP/GaP	Yellow/Diff.	80°	.8	5.0	15	2.1	2.8	20	100	4	585	32
MT130-HLO	GaAsP/GaP	Orange/Clear	50°	1.0	8.0	15	2.1	2.8	20	100	4	610	35
MT140-HLO	GaAsP/GaP	Orange/Diff.	80°	.8	4.0	15	2.1	2.8	20	100	4	610	35