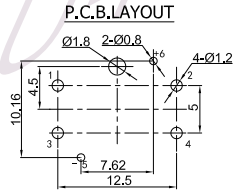
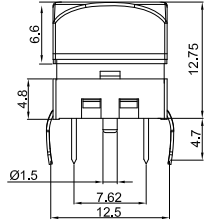
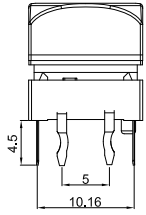
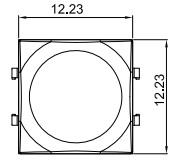
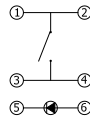


修改	記號	g	容	修改者	日期
	△				

本公司智慧財產，未經同意不得複製



CIRCUIT



SWITCH SPECIFICATIONS	
POLE - POSITION	1P1T, with LED
CONTACT RATING	12 V DC, 50 mA
CONTACT RESISTANCE	100 mΩ MAX. 1.5 V DC ; 100 mA , by Method of Voltage DROP
INSULATION RESISTANCE	100 MΩ MIN. 500 V DC
DIELECTRIC STRENGTH	Breakdown is not Allowable ; 500 V AC for 1 Minute
OPERATING FORCE	250 ± 50 gf
OPERATING LIFE	200,000 Cycles Min
OPERATING TEMPERATURE RANGE	-20°C ~ 70°C
TOTAL TRAVEL	0.4±0.15mm
Solder Specifications	260°C for 3 Seconds
ACTUATOR TERMINAL BASE FRAME COVER	PA+GF BRASS GOLD FLAS PA+GF PC

Model 型号	C3012	T	W	R	C	
	Cap Color 上盖颜色	Diffuser Color 散光片颜色	LED Color 灯颜色	Terminal Shape 端子形状		
T	Transparent 透明	W	White 白色	N	Without LED	C
R	Red 红色	R	Red 红色	R	Red 红灯	
G	Green 绿色	G	Green 绿色	Y	Yellow 黄灯	M
Y	Yellow 黄色	Y	Yellow 黄色	G	Green 绿灯	
U	Blue 蓝色	U	Blue 蓝色	U	Blue 蓝灯	SMT
			W	White 白灯		
			R/G	Red/Green 红/绿		
			R/U	Red/Blue 红/蓝		

LED SPECIFICATIONS		Unit	Value / LED Color					
			Blue	Green	Red	White	Yellow	
ATTENTION	LEDs are Electrostatic Sensitive devices	(+) ○ — (—)						
		FORWARD CURRENT	If	mA	10	20	20	2
REVERSE VOLTAGE	Vr	V	5.0	5.0	5.0	5.0	5.0	
REVERSE CURRENT	Ir	μA	10	10	10	10	10	
FORWARD VOLTAGE	Vf	V	@ 10mA 3.0-4.0	2.1-2.5	2.0-2.5	@ 2mA 2.8-4.0	2.0-2.5	
LUMINOUS INTENSITY	Iv	mcd	@ 10mA 200	800	1800	@ 2mA 12	1800	

昭华企业香港
CHAU-HUA

中心孔距 皆为±0.05	製圖	P.M.D	比例	5:1	日期	15/11/05	圖號	C3012-TW SERIES	設備
一般公差 0-150 : ±0.05 >151-300 : ±0.1 >301-500 : ±0.2 >501-1000 : ±0.3	設計	Shane jin	單位	mm	材質				機型
	校對	Boris jia	全週倒角		數量			圖名	
	審核	King jin	視圖		處理				