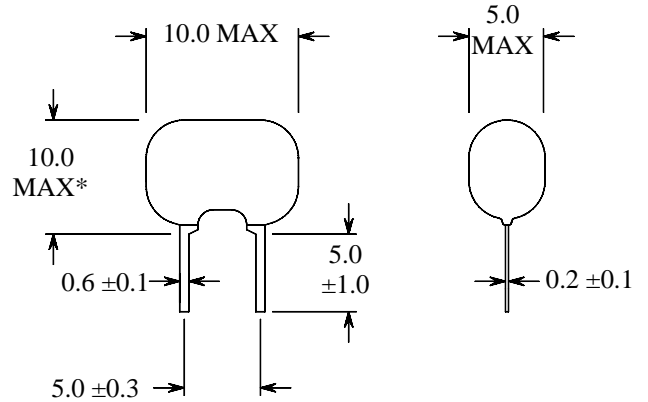


ZTA Series Ceramic Resonator

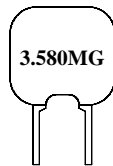
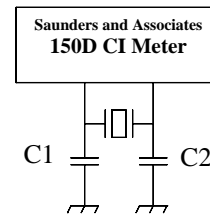
Revision: 1996-B

All Dimensions in mm.

General Specifications	
Frequency Range	2.000MHz to 25.000MHz
Frequency Tolerance	±0.5% at 25°C
Frequency Stability	±0.3% over -20°C to +80°C
Aging	±0.5%/10 years
Equivalent Series Resistance	80 Ohms Max.
C1	33pF
C2	33pF



Test Circuit



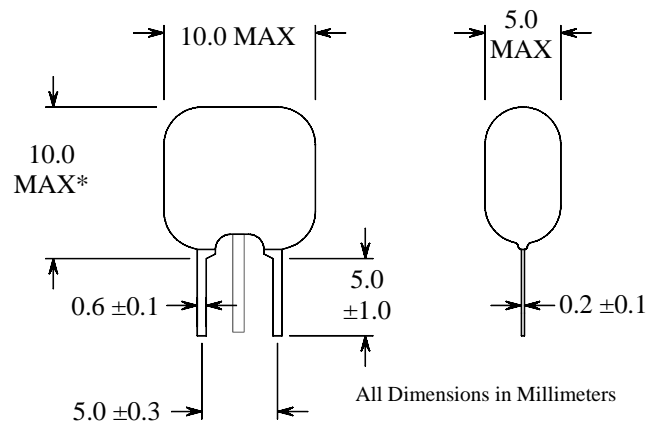
Marking Guide
Line 1: Frequency in MHz

* 2.00-4.91MHz = 7.5mm max.

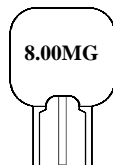
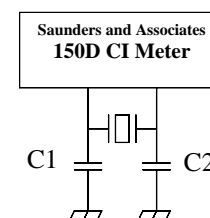
ZTT Series Ceramic Resonator

Revision: 1996-B

General Specifications	
Frequency Range	2.000MHz to 25.000MHz
Frequency Tolerance	±0.5% at 25°C
Frequency Stability	±0.3% over -20°C to +80°C
Aging	±0.5%/10 years
Equivalent Series Resistance	40 Ohms Max.
C1	33pF
C2	33pF



Test Circuit



Marking Guide
Line 1: Frequency in MHz

* 2.00-4.91MHz = 8.0mm max.