

NOTES:

- 1 SCREW AND WASHER TO BE SHIPPED UNASSEMBLED IN A SEPARATE BAG.
- 2 ALL TORQUE TESTING MUST BE PERFORMED WITH A .038 / 0.97 MINIMUM THICK SPACER BETWEEN THE SCREW HEAD AND TERMINAL BODY.
- 3 TORQUE REQUIREMENTS: THE THREADS OF BOTH THE POWER TERMINAL AND THE BRASS SCREW SUPPLIED WILL WITHSTAND 8 IN.-LBS. MINIMUM OF TIGHTENING TORQUE WITHOUT DAMAGE, WHEN A WASHER WITH A MINIMUM THICKNESS OF .038 / 0.97 (AS SUPPLIED) IS INSTALLED BETWEEN THE SCREW HEAD AND THE POWER TERMINAL BODY.
- 4 NO PLATING ON EDGES SHOWN.
- 5 C-Press® CONTACT PLATED THRU HOLE REQUIREMENTS PER DRAWING 27331.
- 6. WHEN NO WASHER / SPACER OR TERMINAL LUG IS INSTALLED, THE THREADS OF THE POWER TERMINAL WILL WITHSTAND A MAXIMUM TIGHTENING TORQUE OF 6 IN.-LBS.

SPECIFICATIONS

MATERIALS

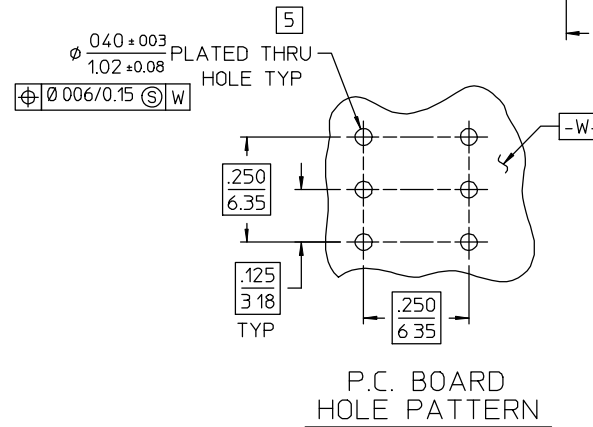
Isolator ————— Nylon, UL 94V-0 Rated,
Color: Natural

Power Terminal ————— Copper-Nickel-Tin Alloy, CDA 72500
Finish: Solder Plate
except per note 4

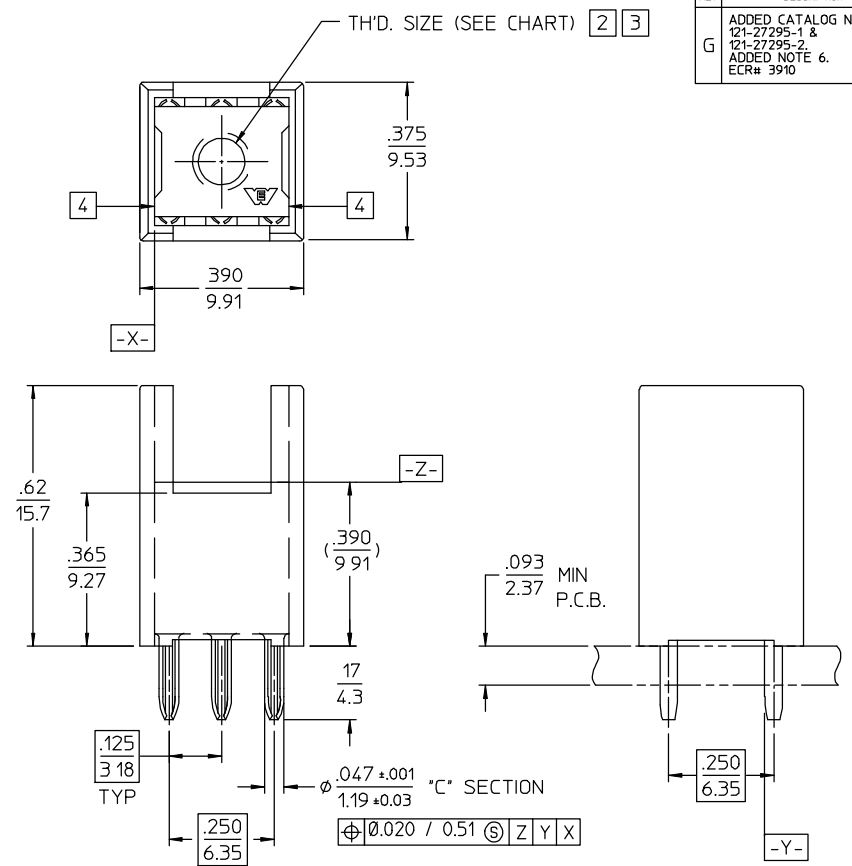
- 1 2 Screw (Not Shown) ————— Brass (SEE CHART)
- 1 2 Washer (Not Shown) ————— (SEE CHART)

PERFORMANCE CHARACTERISTICS

- Insulation resistance ————— 5000 megohms min.
- Current rating, 6 Pin ————— 18 amp @ 30°C rise
- Operating temperature range ————— -55°C to +105°C
- C-Press® Performance:
- Maximum insertion force, 6 Pin ————— 240 lbs. max.
 - Minimum retention force, 6 Pin ————— 48 lbs. min.
 - Number of repair cycles without hole deformation or performance loss ————— 3
 - Contact to PTH electrical resistance — 2 milliohms max.



P.C. BOARD HOLE PATTERN



121-27295-2 SHOWN

REV	DESCRIPTION	BY DATE	APPD
G	ADDED CATALOG NoS 121-27295-1 & 121-27295-2. ADDED NOTE 6. ECR# 3910	5/6/00/JAD	JMK

1 2	121-27295-4	#6-32 UNC-2B THREAD, WITH #6-32 UNC-2A SCREW AND .22 / 5.6 O.D. X .038 / 0.97 MIN. THK. BRASS WASHER	107-42677	107-42678
1 2	121-27295-3	#4-40 UNC-2B THREAD, WITH #4-40 UNC-2A SCREW AND 19 / 4.8 O.D X .038 / 0.97 MIN. THK. STAINLESS STEEL WASHER		
	121-27295-2	#6-32 UNC-2B THREAD, WITHOUT SCREW		
	121-27295-1	#4-40 UNC-2B THREAD, WITHOUT SCREW		
	CATALOG No	DESCRIPTION	INSERTION TOOL	REMOVAL TOOL

UNLESS OTHERWISE SPECIFIED: DIMENSIONS ARE IN INCHES. OR INCHES / MM		Litton Winchester Electronics 400 PARK ROAD WATERTOWN, CONNECTICUT 06795	
TOLERANCES	MM		
DECIMALS	.XX ± .01 / 0.3 .XXX ± .005 / 0.13	SCALE 4:1	
ANGLES	*	TITLE	
CUSTOMER DRAWING		POWER TERMINAL WITH ISOLATOR .125 X .250 GRID - 6 PIN	
DRAWN	DATE	CHECKED	DATE
DONNA	07/16/85	JAD	08/09/85
APPROVED	DATE	APPROVED	DATE
JAD	08/12/85		
27295		SHT 1 OF 1	REV. G