



# PRODUCT SPECIFICATION

REV A January 2011

Oscilent Controlled Document

Ordering Code / Part Number	Product Description
807-IF246.0M-B	246.0MHz IF SAW Filter

## Specification Contents

- o Mechanical Dimensions
- o Test Circuit
- o Maximum Ratings
- o Electrical Specification
- o Frequency Response

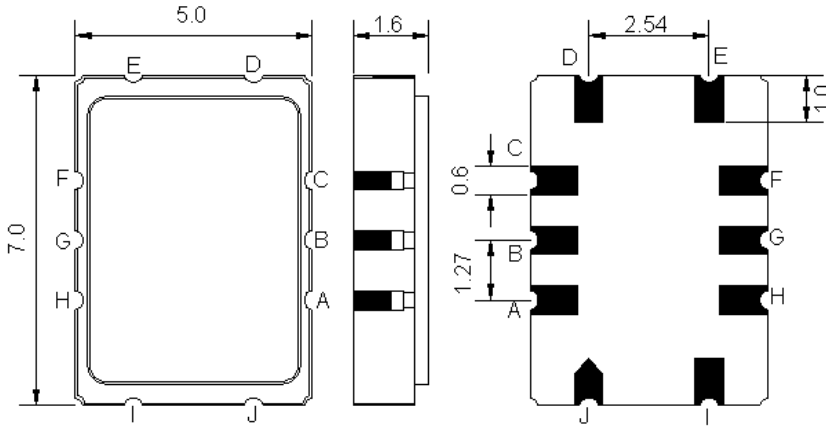
## Notes

- o Electrostatic Sensitive Device (ESD) 
- o Avoid excessive ultrasonic exposure
- o Solderability compatible with JEDEC J-STD-020C Pb-free process, 260°C peak reflow temperature
- o This product complies with EU directive 2002/95/EC (RoHS compliance)



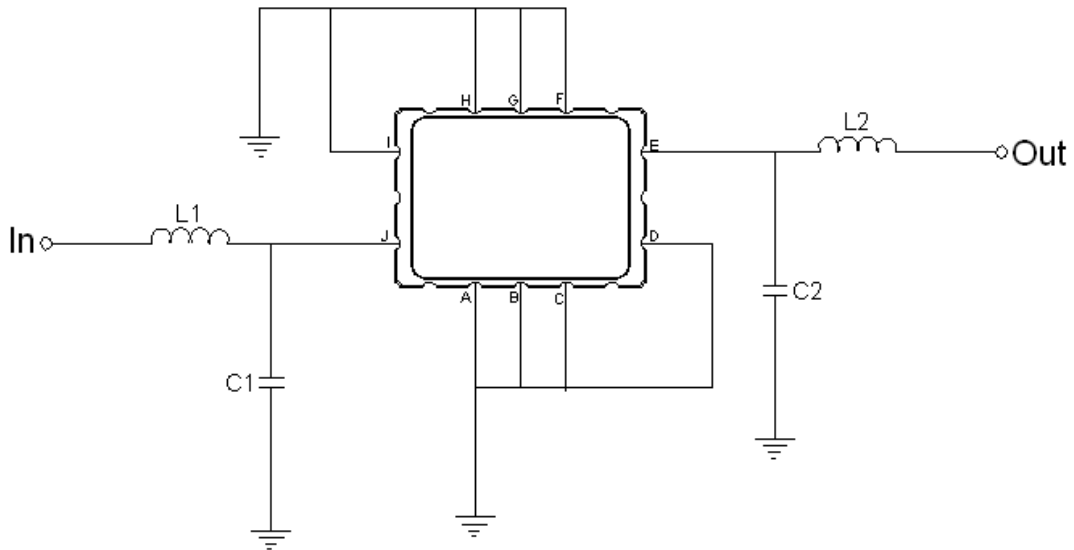


**Mechanical Dimensions (mm)**



Pin Description	
A, B, C, D, F, G, H, I	Ground
J	Input
E	Output

**Test Circuit**



Test Fixture & Values	
Input	L1=68nH, C1=0.75pF
Output	L2=120nH, C2=0.5pF
Source/Load Impedance	50 Ω



## Maximum Ratings

Parameters Description	Unit	Minimum	Typical	Maximum
Operating Temperature Range	°C	-25	-	85
Storage Temperature Range	°C	-40	-	85
Maximum DC Voltage	V	-	-	10
Maximum Input Power	dBm	-	-	10
Source Impedance (single ended) <sup>(1)</sup>	Ω	-	50	-
Load Impedance (single ended) <sup>(1)</sup>	Ω	-	50	-

Notes: With Matching Network (Ref. Testing Environment Circuit as shown above).  
Those impedances could be modified with different impedance values and/or structures, if necessary.

## Electrical Specification

Parameters Description	Unit	Minimum	Typical	Maximum
Center Frequency (Fo)	MHz	-	246.0	-
Minimum Insertion Loss (Fo±50.0 kHz)	dB	-	5.0	6.5
Amplitude Ripple Variation at Fo±50.0 kHz	dB <sub>p-p</sub>	-	1.2	2.0
Attenuation				
Fo -25.00 ~ Fo -0.60 MHz	dB	50.0	58.0	-
Fo -0.60 ~ Fo -0.40 MHz	dB	32.0	45.0	-
Fo -0.40 ~ Fo -0.20 MHz	dB	10.0	25.0	-
Fo +0.20 ~ Fo +0.40 MHz	dB	10.0	25.0	-
Fo -0.40 ~ Fo -0.60 MHz	dB	32.0	45.0	-
Fo -0.60 ~ Fo -25.0 MHz	dB	50.0	60.0	-



### Frequency Response

