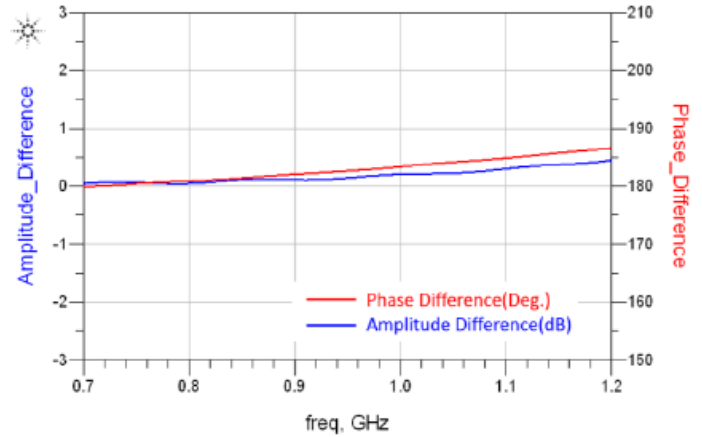
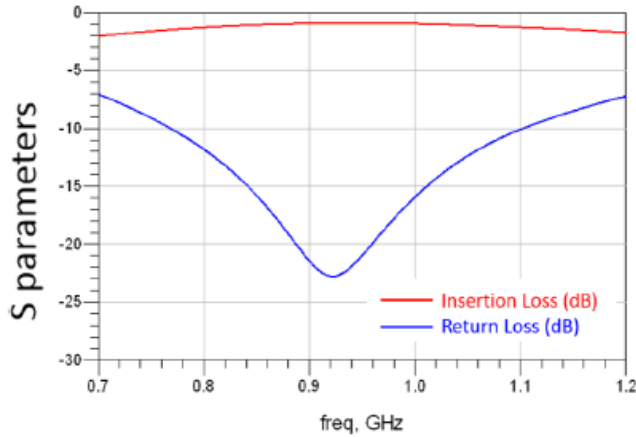


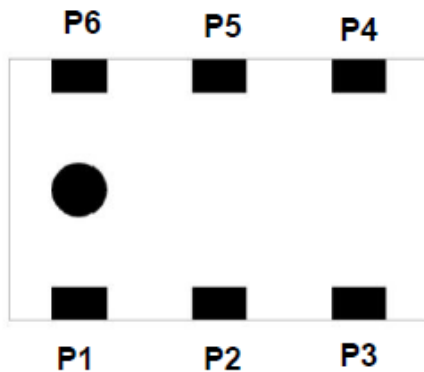
#### ELECTRICAL SPECIFICATION

PARAMETERS	SPECIFICATIONS	UNIT
Frequency Range	880.00 to 960.00	MHz
Insertion Loss, max	1.3	dB
Unbalance Impedance	50	$\Omega$
Balance Impedance	50	$\Omega$
Phase Difference	$180^\circ \pm 10^\circ$	
VSWR, max	2.0	
Amplitude Difference, max	1.0	dB
Operating Temperature Range	-40 ~ +85	$^\circ\text{C}$

#### TYPICAL ELECTRIC CHART



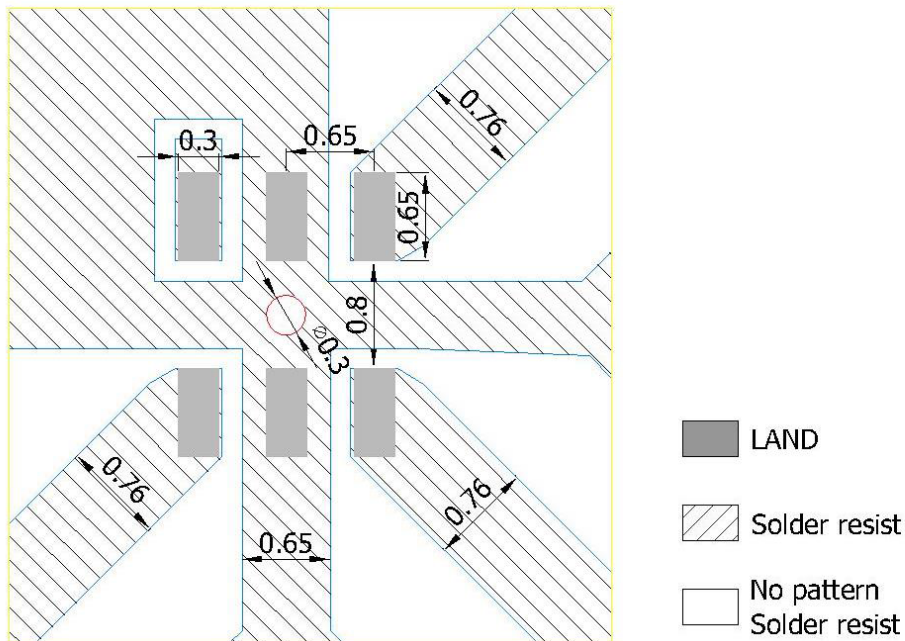
#### MECHANICAL SPECIFICATION



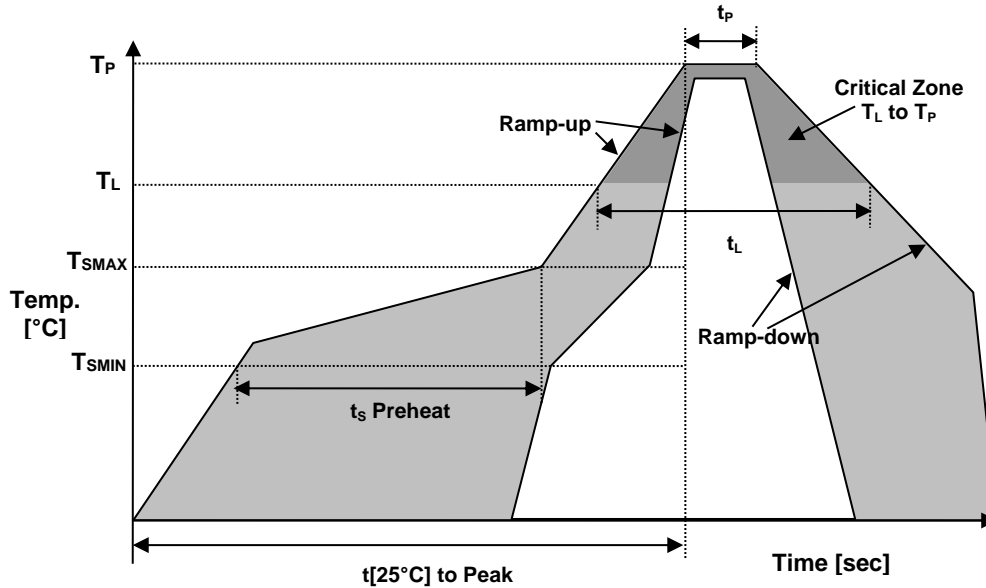
PIN	Connection	PIN	Connection
P1	Unbalance Port	P4	Balance Port
P2	GND or DC Feed	P5	GND
P3	Balance Port	P6	NC

	Symbol	Dimension (mm)
<p>Top view      Bottom view      Side view</p>	L	$2.00 \pm 0.15$
	W	$1.25 \pm 0.15$
	T	$0.90 \pm 0.15$
	A	$0.20 \pm 0.15$
	B	$0.30 \pm 0.15$
	C	$0.35 \pm 0.15$
	D	$0.65 \pm 0.15$
	E	$0.20 \pm 0.15$

#### SOLDER PATTERN



### REFLOW PROFILE



Reflow profile		
Temperature Min Preheat	$T_{SMIN}$	150°C
Temperature Max Preheat	$T_{SMAX}$	200°C
Time ( $T_{SMIN}$ to $T_{SMAX}$ )	$t_s$	60-180 sec.
Temperature	$T_L$	217°C
Peak Temperature	$T_P$	260°C
Ramp-up rate	$R_{UP}$	3°C/sec max.
Ramp-down rate	$R_{DOWN}$	6°C/sec max.
Time within 5°C of Peak Temperature	$t_p$	10 sec.
Time $t_{[25°C]}$ to Peak Temperature	$t_{[25°C]}$ to Peak	480 sec.
Time	$t_L$	60-150 sec.

### ENVIRONMENTAL

PARAMETER	VALUE
MOISTURE SENSITIVITY LEVEL	1
RoHS2	6/6 COMPLIANT & LEAD FREE
REACH-SVHC	COMPLIANT
HALOGEN-FREE	COMPLIANT
TERMINATION FINISH	Sn



March, 2017