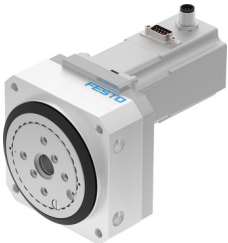


# Rotary actuator ERMO-32-ST-E

Part number: 3008528

FESTO



## Data sheet

Feature	Value
Size	32
Structural design	Electromechanical rotary actuator with integrated gearbox
Mounting position	Any
Type of mounting	With internal thread
Rotation angle	Infinite
Gear ratio	7:1
Nominal torque	5 Nm
Nominal rotary speed	50 1/min
Max. rotational speed	100 1/min
Torsional backlash	0.2 deg
Repetition accuracy	±0.1 °
Max. axial force	450 N
Max. radial force	550 N
Permissible mass moment of inertia	0.0164 kgm <sup>2</sup>
Product weight	2200 g
Step angle with full step	1.8 deg
Step angle tolerance	±5%
Mass moment of inertia JO	0.39 kgcm <sup>2</sup>
Duty cycle	100%
Nominal operating voltage DC	24 V
Motor nominal current	4.2 A
Insulation protection class	B
Motor type	Stepper motor
Rotor position sensor	Incremental encoder
Rotor position sensor interface	RS422 TTL A/B channels + zero index
Rotor position sensor measuring principle	Optical
Electrical connection technology	Plug
CE marking (see declaration of conformity)	As per EU EMC directive
Interface code, base	E8-55
Degree of protection	IP40
Ambient temperature	0 °C ... 50 °C
Relative air humidity	0 - 85 % Non-condensing
Note on materials	Contains paint-wetting impairment substances RoHS-compliant

Feature	Value
Material of flange	Wrought aluminum alloy Anodized
Housing material	Wrought aluminum alloy Anodized