

# Cold Deck

## LED lighting system for multi-deck merchandisers

**Cold Deck** lighting system is designed to optimize visual appeal of produce, meat, and dairy cases (multi-deck merchandisers). Extends shelf life of perishables through reduced heat output.

- Eliminates the need to de-merchandise cases while upgrading
- Illuminates product facings with crisp, uniform light dispersion
- **Up to 77% energy savings compared with typical fluorescent fixtures**

**Dongle** – Powers lights through existing fluorescent lamp holders. Patent pending feature eliminates the need to de-merchandise.

**Lamp holder bands** – Attaches the dongle to the existing lamp holder.

**Rare-earth magnets** – Secures lights to shelves without the need to be mechanically affixed.

**Stand-off clips** – Snaps together to adapt to different canopy depths and angles.

**Class 2 rating** – Converts case to a low voltage system.

### Interior

Downlighting



Shelf

Canopy

## Specifications

### Electrical

Input voltage	100-240 VAC, 50-60 Hz	
Output voltage	24 VDC, Class 2 low voltage	
System power	3'	4'

	3'	4'
<b>Canopy</b>	17 W	23 W
<b>Shelf</b>	6 W	8 W

### Lighting

Illuminance	Canopy 1,000 lux <sup>1</sup> Shelf 1,800 lux <sup>2</sup>
Color temperature (CCT)	2700 K, 3500 K, 4000 K
Color rendering (CRI)	85

### Performance

Ingress Protection	IP68 (highest dust and water protection)
Operating temperature	-25 °C to 50 °C
Life rating	100,000 hours (L <sub>70</sub> ) <sup>3</sup>
Dimming	Optional Motion Sensing (see Cold Series Dimming Control data sheet)

### Construction

Housing	Acrylic, impact modified with UV stabilization
Body color	White

### Mounting

Canopy	Stand-off Clips (6 included)
Shelf	Magnetic or mechanical (screws not included)

### Documentation

Warranty	5-year limited
Agency listings	UL Listed, UL (NSF/ANSI 2), CE, DesignLights Consortium® (DLC)
Files available	LM-79, LM-80, IES

1 Canopy measured at 53" from light.  
2 Shelf measured at 12" from light.  
3 Based on LED component manufacturer data.

Project Name/Location

Part Number

Notes#

Date



**SloanLED**<sup>®</sup>  
Leaders in LED Technology  
Lighting Systems

## Ordering Information

Example: 701940-4WC4X1

701940	—				X																											
		<b>Color Temperature</b>	<b>Type</b>	<b>Length</b>		<b>Connection</b>																										
		<table border="1"> <thead> <tr> <th>Code</th> <th>Description</th> </tr> </thead> <tbody> <tr> <td>2W</td> <td>2700 K</td> </tr> <tr> <td>3W</td> <td>3500 K</td> </tr> <tr> <td>4W</td> <td>4000 K</td> </tr> </tbody> </table>	Code	Description	2W	2700 K	3W	3500 K	4W	4000 K	<table border="1"> <thead> <tr> <th>Code</th> <th>Description</th> </tr> </thead> <tbody> <tr> <td>C</td> <td>Canopy</td> </tr> <tr> <td>S</td> <td>Shelf</td> </tr> </tbody> </table>	Code	Description	C	Canopy	S	Shelf	<table border="1"> <thead> <tr> <th>Code</th> <th>Description</th> </tr> </thead> <tbody> <tr> <td>3</td> <td>3'</td> </tr> <tr> <td>4</td> <td>4'</td> </tr> </tbody> </table>	Code	Description	3	3'	4	4'		<table border="1"> <thead> <tr> <th>Code</th> <th>Description</th> </tr> </thead> <tbody> <tr> <td>1</td> <td>Dongles</td> </tr> <tr> <td>2</td> <td>Flying Leads</td> </tr> </tbody> </table>	Code	Description	1	Dongles	2	Flying Leads
Code	Description																															
2W	2700 K																															
3W	3500 K																															
4W	4000 K																															
Code	Description																															
C	Canopy																															
S	Shelf																															
Code	Description																															
3	3'																															
4	4'																															
Code	Description																															
1	Dongles																															
2	Flying Leads																															

### Power Supplies<sup>1</sup>

Description	Part Number
100 W, with Power Control	701895-24C

### Dimming

Description	Part Number
Dimming Controller	701890-PWR
Occupancy Sensor, Standard <sup>3</sup>	400661
Occupancy Sensor, Wide <sup>4</sup>	400964

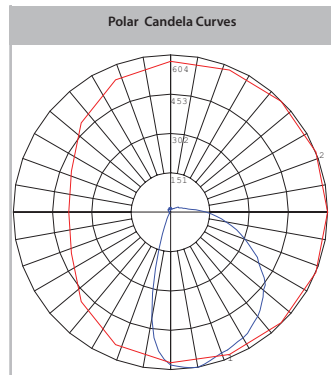
### Accessories<sup>2</sup>

Description	Part Number
Stand-off Clip	401091
5 Clip Spanner Wrenches	401368-5
Small Terminal Block	401350
Large Terminal Block	401351

- 1 Single power supply can drive up to (4) canopy lights or (12) shelf lights.
- 2 (6) clips included with each canopy light to space by ½" or angle by 10°. Additional clips may be used to increase spacing and/or angle (see install guide). Additional clips may also be used to angle shelf lights if desired. Screws not included for fastening to non-magnetic shelves.
- 3 May require an L-bracket (not included) for mounting.
- 4 Alternative for 400661. Cat 5 cabling to the sensor not included.

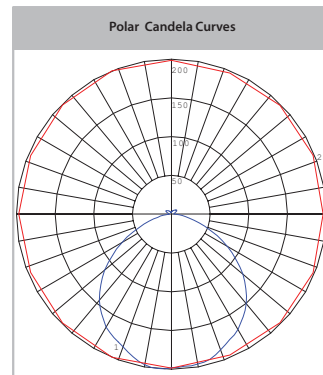
## Photometrics

### Canopy



Vertical Plane Horizontal Cone

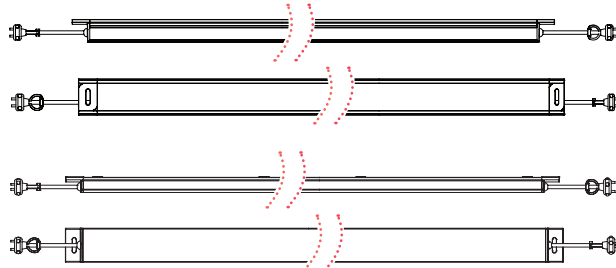
### Shelf



Vertical Plane Horizontal Cone

## Dimensions

weight = 0.8 lbs (canopy), 0.6 lbs (shelf)



3' Canopy 34.05" × 1.75" × 1.15"  
4' Canopy 46.05" × 1.75" × 1.15"

3' Shelf 34.05" × 1.75" × 0.80"  
4' Shelf 46.05" × 1.75" × 0.80"

*Dongle versions shown.*



5725 Olivas Park Drive, Ventura, CA 93003  
805.676.3200 Fax 805.676.3206  
info@SloanLED.com SloanLED.com

Cold Deck is covered by patents pending.

© 2015 SloanLED Rev F 2015-07-02