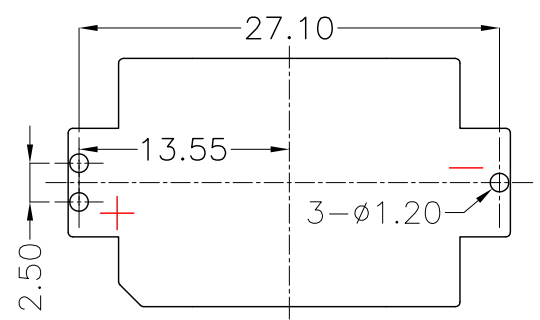
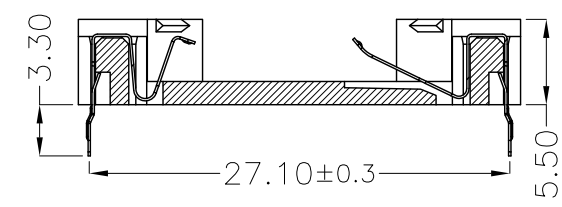
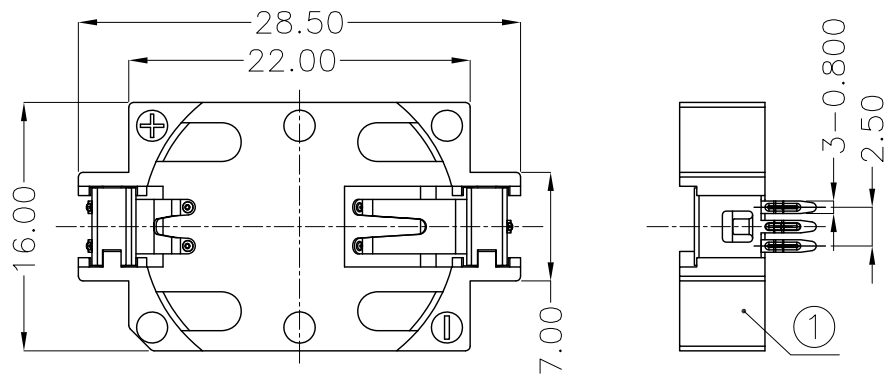
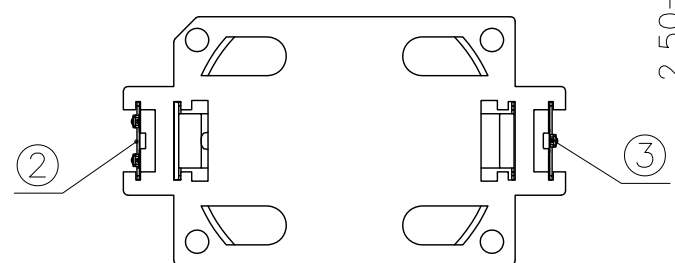




REV.	ECN NO.	REVISED	DATE



PCB Layout Diagram  
Top View



NOTE:

- MATERIAL:
  - HOUSING:LCP UL94V-0
  - CONTACT:PHOSPHOR BRONZE (SURFACE PLATING: Au1u")
- ELECTRIC:
  - CONTACT RESISTANCE: 30 MILLIOHMS MAX
  - INSULATION RESISTANCE: 1000 MEGA OHMS MIN
  - DIELECTNIC VOLTAGE: 500V AC ONE SEC LEVEL
  - OPERATING TEMPERATURE: -25°C~ +85°C

ORDERING INFORMATION  
BS-06-A\*\*\*003

电池座系列  
BS-06系列  
DIP 90° TYPE

PLATING:  
A-Au1U"  
J-Ni100U"~120U"  
K-Sn100U"~120U"

MATERIAL:  
1A-PBT BLACK  
1B-PA66 BLACK  
2A-PPA BROWN  
2B-PPA BLACK  
3A-PPS BROWN  
3B-PPS BLACK  
4A-LCP WHITE  
4B-LCP BLACK  
5A-PA6T WHITE  
5B-PA6T BLACK



NO.	PART NAME	Q'TY	MATERIAL	PLATING & COLOR
3	TERMINAL(-)	1	PHOSPHOR BRONZE, T=0.15mm	Au Plating
2	TERMINAL(+)	1	PHOSPHOR BRONZE, T=0.15mm	Au Plating
1	HOUSING	1	LCP	WHITE

UNLESS OTHERWISE SPECIFIED TOLERANCES		<b>MYOUNG 美阳</b> <a href="http://www.meiyangdz.com">www.meiyangdz.com</a>	
DECIMALS: X :±0.30 X.X :±0.25 X.XX :±0.20 X.XXX :±0.10	ANGLES: X :±1° X.X :±0.5°	DSND YangFeng	DATE 2021-01-07
WEIGHT: 1.49g		CHKD ZhouRuicai	DATE 2021-01-07
SHEET 1 OF 1		APVD XueShunyong	DATE 2021-01-07
UNIT: mm	REV.: A/0	SCALE: 2:1	VIEW:
		SIZE: A4	
		OBJECT: MY	
			TITLE: BS-2032-6 Au DIP
			PART NO.: BS-06-A4AA003
			DRAW NO.:MY-CP-0248