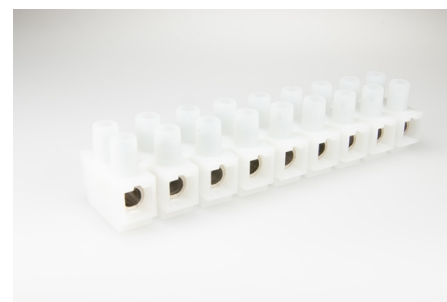




## Screw Connectors

### 2000 K/ 9 MDS Bronze GW

Terminal Block, 9 pole, Insulating Material: PA 6-GW, Cross-Section: 16.0 mm<sup>2</sup>, Pin Spacing: 14.5 mm, Centre Stop (MDS): yes, Fixing: Screw, Voltage Rating: 500 V, Current Rating: 76 A



## Order Info

<b>Reference Number (ref. no.)</b>	1287G9M
<b>Applications</b>	Installation, Electrical Appliances, Transformers
<b>PU</b>	0

## Type

<b>Type</b>	Terminal Block
<b>Number of poles</b>	9 pole
<b>Clamping Units per Pole</b>	1
<b>Colour</b>	white
<b>Cross-Section</b>	16.0 mm <sup>2</sup>
<b>Connection Type</b>	Screw
<b>Centre Stop (MDS)</b>	yes

## Technical Data

<b>Voltage Rating</b>	500 V
<b>Current Rating</b>	76 A
<b>Insulating Material</b>	PA 6-GW
<b>Contact Material</b>	Brass
<b>Core Cross-Section min.</b>	0.5 mm <sup>2</sup>
<b>Core Cross-Section max.</b>	10.0 mm <sup>2</sup>
<b>Flammability Rating</b>	V-2
<b>max. Ambient Temperature Operation</b>	85 °C
<b>Type of Conductor Solid</b>	yes
<b>Type of Conductor Flexible</b>	yes
<b>Type of Conductor Stranded</b>	yes
<b>Stripping Length</b>	10.0-10.5 mm
<b>Assembly Contact Screw</b>	1.0x5.5 / ⚡ 2.0 Nm
<b>Pin Spacing</b>	14.5 mm
<b>Fixing</b>	Screw
<b>Approbation EN60998</b>	2000_EN60998_20070823_20160412_VDE_ENEC_40021892_web.p
<b>Approbation UL</b>	1500_2000_19890315_20170213_UL_E63492_1-08_Description_we
<b>Approbation CSA</b>	Schraub_Steck_Schraubenlos_SI_Klemmen_20160429_CSA_700765

## Accessories

---

**ZEL 110**

196420

---