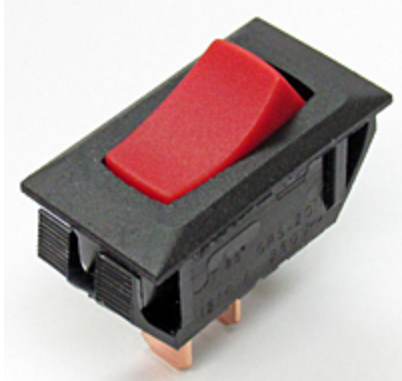


**CW INDUSTRIES**130 James Way  
Southampton, PA 18966



Phone: 215-355-7080 • Fax: 215-355-1088

Email: [info@cwind.com](mailto:info@cwind.com) • Website: <http://www.cwind.com>**Item # GRS-2011-2019, 2000 Series Maintained Action Full Size Rocker Switches**
[Check Distributor Stock](#) · [Specifications](#) · [Materials](#) · [Operating Standards](#)
**Check Distributor Stock**

Check Distributor Stock	<a href="#">DIGI-KEY</a> <a href="#">MOUSER</a>
-------------------------	--

**Specifications**

<b>Circuitry</b>	SPST
<b>Switch Function</b>	ON-OFF
<b>Electrical Ratings<sup>1</sup></b>	10 A @ 14 V (T) 12 (6) A @ 250~ (VDE) 12 A @ 250 VAC 16 A @ 125 VAC 3/4 HP @ 125-250 VAC
<b>Temperature Rating</b>	+65 Max. Degrees C
<b>Panel Opening</b>	0.550 X 1.125 in 13.97 X 28.58 mm
<b>Acceptable Panel Thickness</b>	0.025 - 0.180 in 0.64 - 4.57 mm
<b>Mounting</b>	No hardware or tools needed; self locks into one of the two available panel opening options.  Specify - GRSX-2000 Series - 2000 for 0.550 X 1.125 in. panel opening. Specify - GRSX-2000 Series - 3000 for 0.480 X 1.072 in. panel opening.  <b>CAUTION:</b> Burr direction must be away from the direction of insertion.
<b>Mounting Polarization</b>	No
<b>Actuator Color</b>	Red
<b>Actuator Legend</b>	None
<b>Illumination</b>	Non Illuminated
<b>Housing Color</b>	Black
<b>Insulating Barriers</b>	( <input type="checkbox"/> ) Between Terminals ( <input checked="" type="checkbox"/> ) No Barriers
<b>Terminals</b>	(X) 0.250 x 0.032in. 6.35 x 0.81mm. Quick Connect ( ) 0.187 x 0.032in. 4.75 x 0.81mm. Quick Connect
<b>Contact Action</b>	Sliding with Self Cleaning Contacts

<b>Listing Agency</b> (Consult drawing or factory for specific rating) <sup>2</sup>	 Listing Agencies (2)
<b>Compliance</b>	

<sup>1</sup> Additional ratings may be available, contact us for more information.

<sup>2</sup> Due to ongoing advancements, additional agency certifications may be available, contact us for more information.

<b>Materials</b>	
<b>Rocker Knob</b>	Nylon 94V-2
<b>Housing</b>	Nylon 94V-2
<b>Terminal &amp; Moving Contact</b>	Copper Alloy or Copper Alloy Silver Plated

### Operating Standards

**Endurance:**

100,000 cycles, no load, minimum

25,000 cycles at rated load minimum

**Contact Resistance:**

Less than 0.01  $\Omega$  at 10 mA

**Operating Temperature:**

From -20°C to 105°C maximum.

Consult factory for higher or lower temperature ranges.

**High Voltage Dielectric Withstanding Voltage:**

2,500 V, 60 Hz for 1 minute between mounting surface and circuit connections (min.)

**Relative Humidity:**

Insulation resistance > 10<sup>3</sup> M $\Omega$  after 100 hours at 95% R.H. and 50°C followed by 1 hour dry at ambient room conditions

**Operating Standards** described herein are general specifications that vary depending on the switch construction specified and end application. Contact us for specifications for specific models. Specifications subject to change without notice.