
Wireless Hi Sensitivity Receiver Module (RF ASK)



Version History

| Version | Date | Changes |
|---------|--------------|---------------------------|
| V1.00 | May.25, 2012 | 1 st . Edition |

Model: RWS-371F-6 (433.92MHz)

- Frequency Range: 433.92MHz
- Modulate Mode: ASK
- Circuit Shape: LC
- Data Rate: 4800 bps
- Selectivity: -108 dBm
- Channel Spacing: ± 500 KHz
- Supply Voltage: 3.8~5.5V
- High sensitivity passive design.
- Simple to apply with low external count.

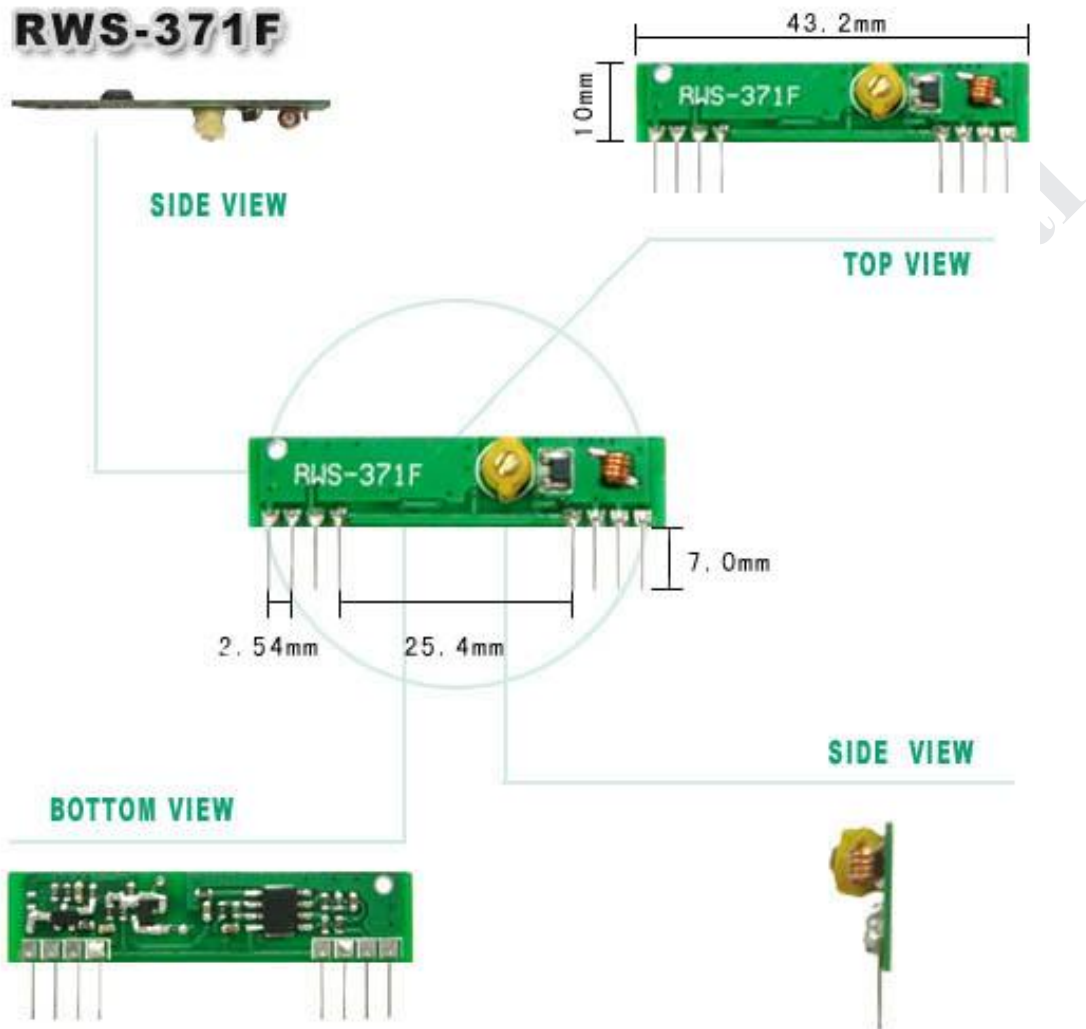
Electrical Characteristic

| Characteristic | Sym | Min | Type | Max | Unit |
|---------------------------|-------|--------|--------|--------|------|
| Operating Radio Frequency | FC | 433.42 | 433.92 | 434.42 | MHz |
| Sensitivity | Pref. | -106 | -108 | -110 | dBm |
| Channel Width | | -500 | | + 500 | KHz |
| Noise Equivalent BW | NEB | | 5 | 4 | |
| Baseband Data Rate | | | | 3 | KB/S |
| Receiver Turn On Time | | | | 3 | ms |

DC Characteristic

| Symbol | Parameter | Conditions | Min | Type | Max | Unit |
|--------|--------------------------|--------------------------|----------|------|-----|------|
| Vcc | Operating Supply Voltage | | 3.8 | 5 | 5.5 | |
| I Tot | Operating Supply Voltage | | | 4.5 | | |
| V Data | Data Out | 1 Data = +200uA (High) | Vcc -0.5 | Vcc | | V |
| | | 1 Data = -10uA (Low) | | | 0.3 | V |

Pin Assignment



Demo Circuit

| Pin | Function |
|-----|-----------------|
| 1 | GND |
| 2 | Digital Output |
| 3 | Linear Out |
| 4 | VCC |
| 5 | VCC |
| 6 | GND |
| 7 | GND |
| 8 | ANT(About 13cm) |



Demo Circuit

