

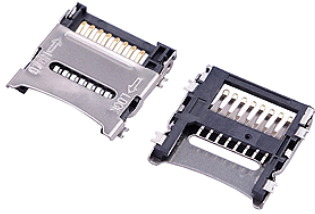
Operation: SMT& 铰链(Hinge)上掀式 T-Flash 连接器



LTEM NO.: TF-002X-H18 (Consumer Electronics)

(14.5L × 13.6W × 1.8H & T-Flash Sockets)

MEMORY-CARD-SOCKETS



Technical parameter

外焊贴装 SMT

PROJECT	LEVEL	A[better product]	B[average product]
		Contact Rating	
Electrical Properties	Initial Contact Resistance	30mΩ max.	50mΩ max.
	Insulation Resistance	100MΩ min. 500V DC	
	Withstand Voltage	500V AC for 1 minute	350 V AC for 1 minut
Durable Performance	There No Load	5,000 Cycles	35000 Cycles
	Rated Load	3,500 Cycles	2,500 Cycles
	Storage temp.	-35℃~+85℃(Operating Temp:)	

側向導入 LATERAL

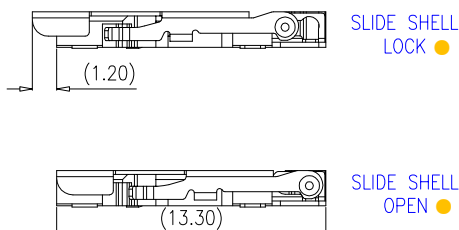
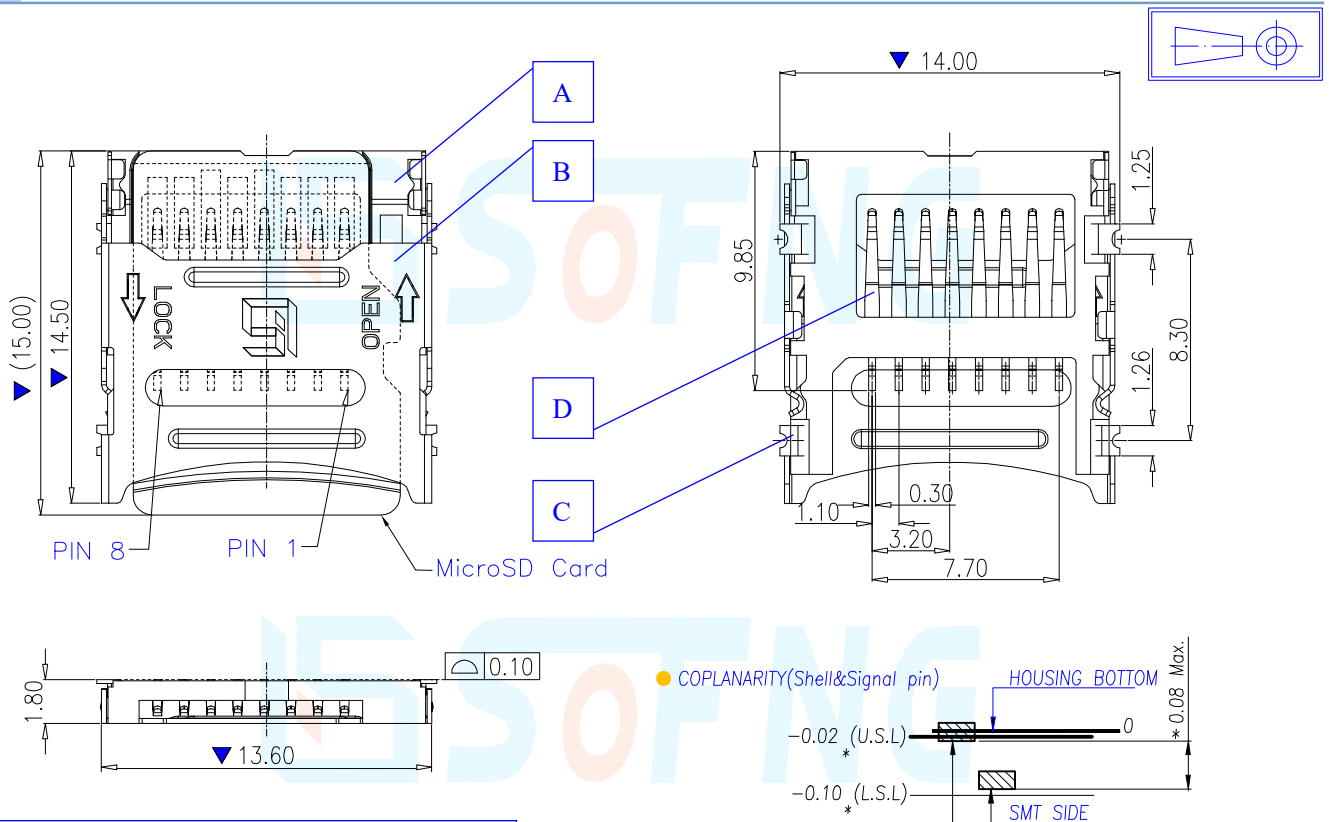
精密部品 NICETY

可靠 STABILIZE

適合環保 RoHS

Page1

Unit:mm



NAME	MATERIAL
A HOUSING 基座	LCP E475 30% (Black)耐热塑胶 UL94V-0
B SHELL 外壳	SUS301-3/4H(t=0.20mm)不锈钢【焊点镀金 1u”】
C HINGE 铰链	C5191R-H (t=0.15mm)磷青铜【锡 30u” 基镀金 1u”】
D CONTACT 接触端子	C5191R-H (t=0.15mm)磷青铜【锡 30u” 基镀金 1u”】

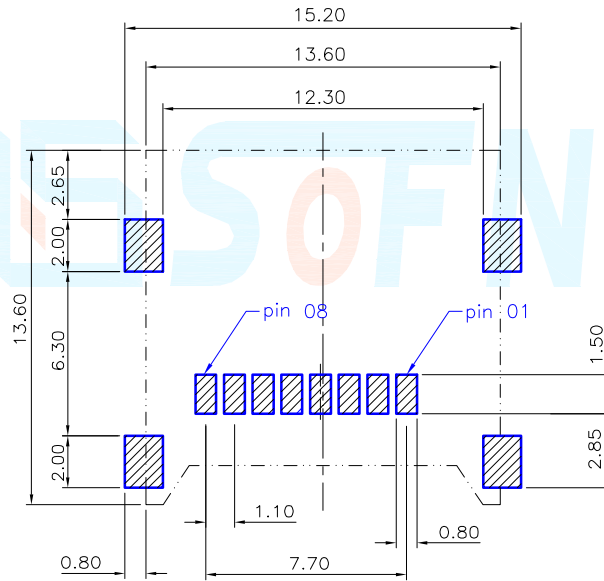
Operating Force

Inward
Exiting

4.0~5.5N. (1N.=100gram-force)
4.0~5.5N. (1N.=100gram-force)

Solder-ability (Max.)

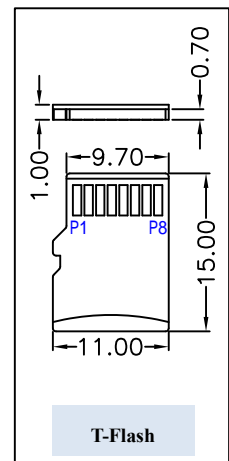
IR Reflow: 250°C, 5sec. Manual: 350°C, 3sec.



DECIMALS	ANGLES
.X :±0.25	X.° :±1.5°
.XX :±0.15	X.X° :±1.0°
.XXX :±0.10	.XXX° :±0.5°

Pin definition

T-Flash CARD			
Pin No.	Pin NAME	Type	Description
PIN①	DAT2	I/O/PP	Date Line[Bit 2]
PIN②	CD/DAT3	I/O/PP	Card Detect Date Lin(Bit 3)
PIN③	CMD	PP	Command Response
PIN④	VDD	S	Supply voltage
PIN⑤	CLX	I	Clock
PIN⑥	Vss	S	Supply voltage ground
PIN⑦	DAT 0	I/O/PP	Date Line [Bit 0]
PIN⑧	DAT 1	I/O/PP	Date Line [Dit 1]



本品不屬於危害性廢棄物,須丟棄時可以委託回收商予以回收再生處理。Products do not belong to hazardous waste,When waste can recycling processing

注記 NOTICE

1. 碩方公司擁有最終解釋權; The SOFNG company reserves the right of final interpretation;
2. 文件禁止外洩、轉載; Leaked and reproduced prohibited;
3. 未經授權修改無效。Modify is invalid.

運送時本產品不要直接與水、酸鹼性化學物質接觸,或放置於含有以上氣體環境中,並且需要注意會有滑落、側翻的危險發生; 運輸過程中不能有碰撞或者擠壓,須保證溫度與濕度適中 [常溫 25°C,濕度在 50°C 以內],不可導致材料變形或氧化。