

KSM - 60 *** SP · KSM - 70 *** SP

The KSM - 60***SP consist of a PIN Photodiode of high speed and a preamplifier IC in the package as an receiver for Infrared remote control systems

FEATURES

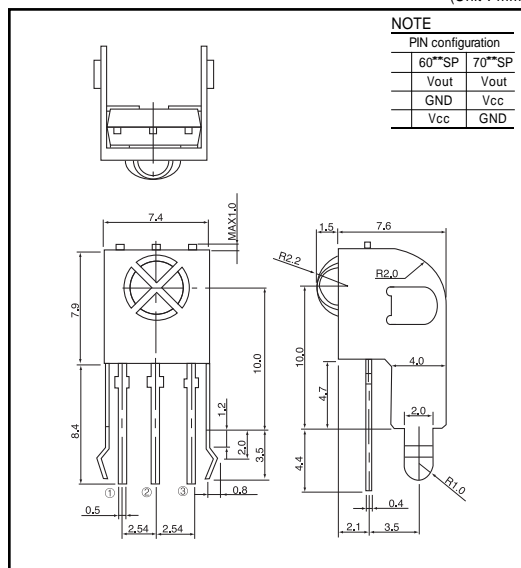
- One mold small package
- 5 Volt supply voltage, low power consumption
- Shielded against electrical field disturbance
- High immunity against ambient light
- Easy interface with the main board
- TTL and CMOS compatibility

APPLICATIONS

- TV, VTR, Acoustic Devices, Air Conditioners, Car Stereo Units, Computers, Interior controlling appliances, and all appliances that require remote controlling

DIMENSIONS

(Unit : mm)



MAXIMUM RATINGS

(Ta=25 Unless otherwise noted)

| Parameter | Symbol | Rating | Unit |
|-----------------------|--------|----------------|------|
| Supply Voltage | Vcc | 5.5 | V |
| Operating Temperature | Topr. | - 10 ~ +60 | |
| Storage Temperature | Tstg. | - 20 ~ +75 | |
| Soldering Temperature | Tsol. | 260(Max 5 sec) | |

B.P.F CENTER FREQUENCY

| Model NO. | B.P.F Center Frequency(kHz) |
|------------|-----------------------------|
| KSM - 1 SP | 40.0 |
| KSM - 2 SP | 36.7 |
| KSM - 3 SP | 37.9 |
| KSM - 4 SP | 32.7 |
| KSM - 5 SP | 56.9 |

ELECTRO-OPTICAL CHARACTERISTICS

(Ta=25), Vcc=5.0V

| Parameter | Symbol | Conditions | Min. | Typ. | Max. | Unit. |
|-------------------------------|-----------------|-----------------------------------|-------------------|------|------|-------|
| Supply Voltage | Vcc | | 4.5 | 5.0 | 5.5 | V |
| Current Consumption | Icc | Input Signal=0 | - | 1.2 | 2.5 | mA |
| Peak Wavelength *1 | p | | - | 940 | - | nm |
| B.P.F Center Frequency | fo | | - | 37.9 | - | kHz |
| Transmission Distance *1 | L | 200 ± 50x | 10 | - | - | m |
| | | ± 30, | 7 | - | - | m |
| H Level Output Voltage *1 | V _{OH} | 30cm over the ray axis | 4.5 | 5.0 | - | V |
| L Level Output Voltage *1 | V _{OL} | | - | 0.1 | 0.5 | V |
| H Level Output Pulse Width *1 | T _{WH} | Burst Wave=600 μs Period=1.2ns | 500 | 600 | 700 | μs |
| L Level Output Pulse Width *1 | T _{WL} | | 500 | 600 | 700 | μs |
| Output Form | | | Active Low Output | | | |

Note : *1. It specifies the maximum distance between emitter and detector that the output waveform satisfies the standard under the conditions below against the standard transmitter

1) Measuring place : Indoor without extreme reflection of light

2) Ambient light source : Detecting surface illumination shall be irradiate 200 ± 50lx under ordinary white fluorescence lamp without high frequency lightning

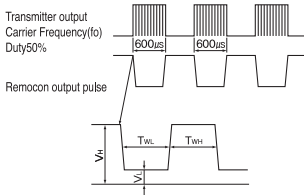
3) Standard transmitter : Burst wave of standard transmitter shall be arranged to 50mVp - p under the measuring circuit

Optic receiver modules

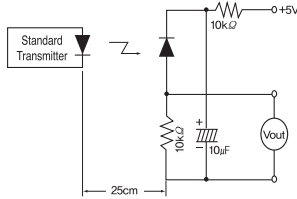
KSM - 60 * SP · KSM - 70 *** SP**

MEASURING METHOD

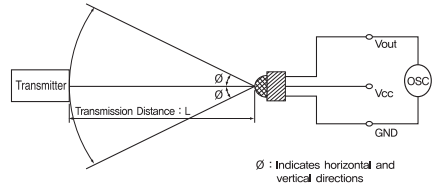
Output Pulse Width



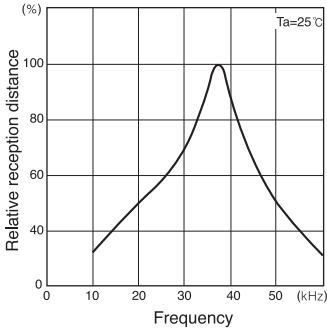
Standard Transmitter



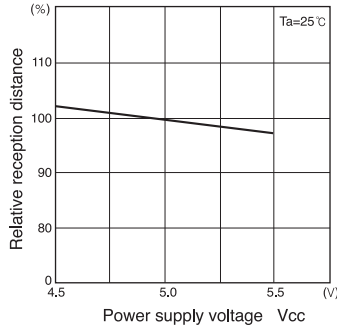
Test Condition of Transmission Distance



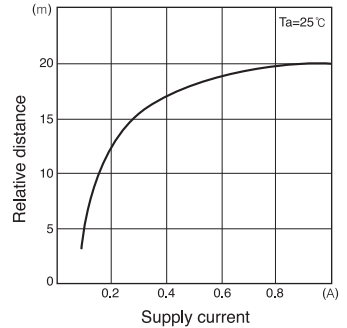
Relative reception distance Vs. Frequency(37.9kHz)



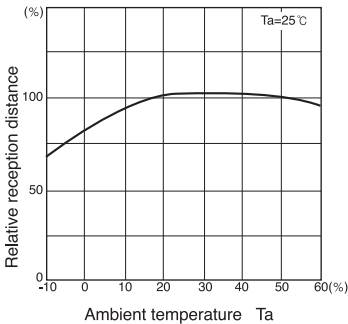
Relative reception distance Vs. Power supply voltage



Relative distance Vs. Supply current



Relative reception distance Vs. Ambient temperature



Radiant pattern

