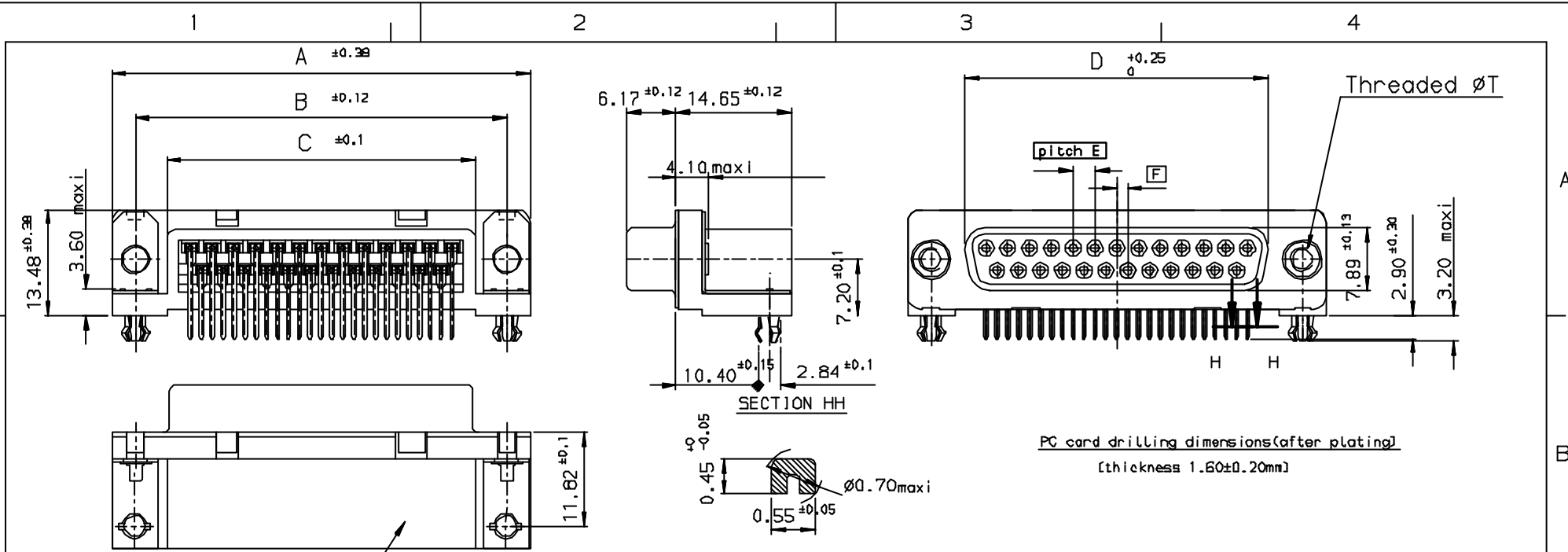


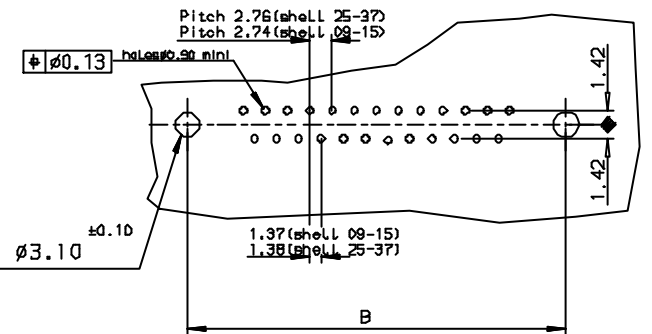
Tous droits strictement réservés. Reproduction ou communication a des tiers interdite sans autorisation écrite de la Direction des Conception. Propriété de FCI. Droits de reproduction FCI.

FCI

All rights strictly reserved. Reproduction or communication to third parties in any form without the written authorization of the Design Director is prohibited. Property of FCI. Copyright FCI.



PC card drilling dimensions (after plating)
(thickness 1.60 ± 0.20 mm)



Part Number & Date Code Printing

PART NUMBER		Plating: 0.75µ AU		Plating: Flash AU		Plating: 0.4µ AU		
SHELL	A ± 0.38	B ± 0.12	C ± 0.10	D ± 0.25	G ± 0.25			
09	30.81	24.99	16.96	16.21	5.90	D09S23A6G*00**	D09S23A4G*00**	D09S23A5G*00**
15	39.14	33.32	25.18	24.54	5.90	D15S23A6G*00**	D15S23A4G*00**	D15S23A5G*00**
25	53.03	47.04	39.12	38.25	5.70	D25S23A6G*00**	D25S23A4G*00**	D25S23A5G*00**
37	69.32	63.50	55.68	54.71	5.70	D37S23A6G*00**	D37S23A4G*00**	D37S23A5G*00**

LF FOR LEAD FREE

Threaded ØT M3 = L
Threaded ØT 4.40 = X

REQUIREMENTS

- Technical characteristics:**
 Shell: steel tin plated
 Insulators: self-extinguishing black polyester, UL 94V0
 Contacts size 20: phosphor bronze, gold on mating end, bright tin on termination and over nickel on entire contact
 Cycles: 500 For protection 5
 200 For protection 4 and 5
 Harpoons: phosphor bronze, tin plated
 Metal plate for electrical continuity: brass, tin plated
 Nuts: brass, tin plated torque: 0.7Nm
Electrical characteristics:
 max. current rating: 15A
 Test voltage: 1000V
 Rated voltage: 300V
 Contact resistance: < 15mΩ
 Shell resistance: < 5mΩ
 Insulation resistance: > 5000MΩ
Climatic characteristics:
 Operating temperature range: -55°C +125°C
Dimensions:
 In accordance with MIL-C-24308

FOR ROHS DETAILS REFER DWG. NO: C01-8646-0000

Utr	Eon no	Dr	date
c	105-0124	JS	27/7/05

		✓ Tolerance LINEAR ±0.1 ANGULAR ±1°		Projection		MM	
Dr	JOHN ELEBA	29/5/08	Product Family	D-SUB	Size	A3	Scale
Eng	GEORGE VJ	29/5/08	Spec ref				
Chr	GEORGE VJ	27/7/05	Material		ECN		
Appr	K Somasundaram	27/7/05					
Title		SOCKET CONNECTOR DELTA D with nut , harpoon , metal bracket		Dwg no		C01-8646-0021	
Catalog no		DELTA-D		CUSTOMER COPY		Sheet 1 of 1	

INDEX	DATE	REVISION DESCRIPTION
c	27/7/05	LEAD FREE DETAILS ADDED