

Cable
UTP Cables
SPEEDGAIN Category 5e UTP Cable

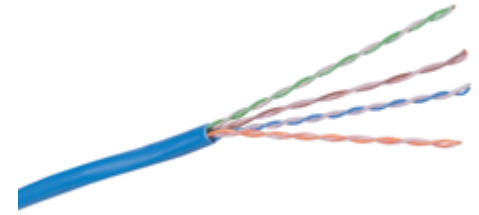


Features

- Sweep Tested from 1-400 MHz
- Guaranteed Headroom Over TIA and ISO Category 5e
- Reverse Sequential Footage Marking
- Backward Compatible to Category 5 and 3

Ordering Information

Description	Color	Catalog Number	UPC Number
SPEEDGAIN Category 5e, 4-Pair, UTP Cable, Plenum REELEX	Blue	C5EPRPB	662620201221



Listings

ANSI/TIA/EIA-568-B.2 Category 5e Component
 UL Listed and Tested
 NEC Article 800 Compliant
 UL Verified Performance

Specifications

Wire	24 AWG Bare Solid Copper
Primary Insulation	CMP: FEP
Primary Insulation	CMR: Polyolefin
Cabling	4 Unshielded Twisted Pairs
Outer Jacket	Low Smoke PVC
Inner Jacket	PVC

Performance

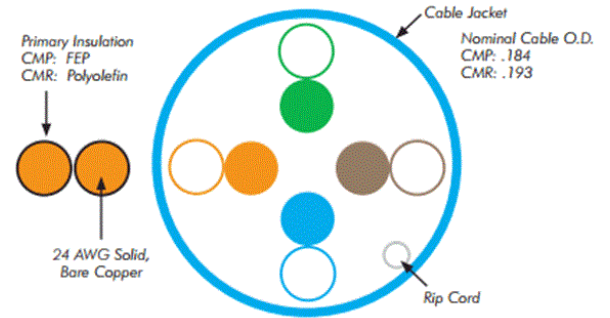
Verifications IEEE 802.3af (PoE)

Applications

Ethernet: 10/100/1000BASE-T
 155 Mbps ATM
 4/16 Mbps Token Ring
 Analog and Digital VoIP

Accessories

SPEEDGAIN Jacks, Category 5e	HXJ5EB
SPEEDGAIN Patch Panel, Category 5e	P5ExxU (xx=Ports)
SPEEDGAIN Patch Cords, Category 5e	PCX5EB* (*=Standard Length)



TRANSMISSION SPECIFICATIONS - Worst Case

TIA/EIA-568-B.2 Category 5e Compliant;
 ISO/IEC 11801, 2nd ed.

Freq. (MHz)	Ins. loss (dB/100m)	NEXT loss (dB)	PSNEXT loss (dB)	ACR (dB)	PSACR (dB)	ELFEXT (dB)	PSELFEXT (dB)	Return loss (dB)
1	2.1	71.5	68.5	69.5	66.5	70.0	67.0	20.2
4	4.2	62.5	59.5	58.4	55.4	58.0	55.0	23.2
8	5.9	58.0	55.0	52.2	49.2	51.9	48.9	24.7
10	6.6	56.5	53.5	50.0	47.0	50.1	47.0	25.2
16	8.3	53.4	50.4	45.2	42.2	45.9	42.9	25.2
31.25	11.8	49.1	46.1	37.4	34.4	40.1	37.1	23.8
62.5	17.1	44.6	41.6	27.6	24.6	34.1	31.0	21.7
100	22.1	41.5	38.5	19.5	16.5	30.0	27.0	20.3
250*	32.0	37.8	35.7	-	-	21.7	18.9	18.1
350*	46.0	33.3	30.3	-	-	19.1	16.1	16.5
400*	47.9	32.5	29.5	-	-	18.0	15.0	16.1

* Frequencies beyond the TIA and ISO requirements are for information only.

