

PART NUMBER	REVISION	DESCRIPTION	FEED TYPE	APPLICATOR STYLE CONVERSION CHART						
				CONVERT TO	PART NUMBERS REQUIRED					
2151742-1	D	FINE CRIMP HEIGHT ADJUST	MECHANICAL	PNEUMATIC FEED	2119950-1	1338685-1	5-18022-5	2119641-1	2119799-1	2063440-1
				SERVO LATCH PLATE	2119951-1	-	8-2151742-5	1901094-3	-	2168400-6 (QUANTITY 2)
				SMART APPLICATOR	2161326-1	-	8-2151742-4	-	-	-
				MECHANICAL FEED	2119949-1	1338685-1	5-18022-5	2119653-1	-	-
				SERVO LATCH PLATE	2119951-1	-	8-2151742-5	1901094-3	-	2168400-6 (QUANTITY 2)
				SMART APPLICATOR	2161326-1	-	8-2151742-4	-	-	-
				PNEUMATIC FEED	2119949-1	1338685-1	5-18022-5	2119653-1	-	-
2151742-2	D	FINE CRIMP HEIGHT ADJUST	PNEUMATIC	MECHANICAL FEED	2119949-1	1338685-1	5-18022-5	2119653-1	-	-
				SERVO LATCH PLATE	2119951-1	-	8-2151742-5	1901094-3	-	2168400-6 (QUANTITY 2)
				SMART APPLICATOR	2161326-1	-	8-2151742-4	-	-	-
2151742-5	D	FINE CRIMP HEIGHT ADJUST	SERVO LATCH PLATE	MECHANICAL FEED	2119949-1	1338685-1	5-18022-5	2119653-1	-	-
				PNEUMATIC FEED	2119950-1	1338685-1	5-18022-5	2119641-1	2119799-1	2063440-1
2151742-6	D	NON-CRIMP HEIGHT ADJUST	SERVO LATCH PLATE	-	-	-	-	-	-	-
				-	-	-	-	-	-	-
2151742-7	D	FINE CRIMP HEIGHT ADJUST	NONE	-	-	-	-	-	-	-
				-	-	-	-	-	-	-
7-2151742-7	D	CRIMP TOOLING KIT	-	-	-	-	-	-	-	-

APPLICATOR DATA		
CRIMP SIZE		TYPE
WIRE	2.29 mm [.090]	F
INSUL	4.06 mm [.160]	F
APPLICATOR INSTRUCTIONS 408-10389		

TERMINAL DATA: TE TERMINAL		TE CRIMP SPECIFICATION	
TERMINAL NAME: RECEPTACLE CONTACT NEXT GENERATION SOFET SHELL			
WIRE STRIP LENGTH	INSULATION DIAMETER RANGE		
4.20-4.80 mm [.165-.189 IN]	Ø3.40-3.70 mm [.134-.146 IN]		
TERMINAL APPLICATION SPECIFICATION		114-106118	
TERMINALS APPLIED			
TE TERMINAL	TE TERMINAL	TE TERMINAL	TE TERMINAL
1971781-1	1971781-2	1971782-1	1971782-2

WIRE SIZE	CRIMP HEIGHT mm [INCH]	CRIMP HEIGHT REFERENCE SETTING
14 AWG OR 2.10mm2	1.63+/-0.05 [.064+/- .002]	9.0

- RECOMMENDED SPARE PARTS
- GREASE BEARING SURFACES LIGHTLY
- LUBRICATE DAILY PER THE APPLICATOR INSTRUCTION SHEET SUPPLIED WITH THE APPLICATOR.
- APPLICATOR SPECIFIC DATA TO BE ENTERED INTO BLANK MEMORY CHIP AT ASSEMBLY. SEE BELOW FOR PART NUMBER:  
MECHANICAL FEED WITH "SMART APPLICATOR" CONVERSION: 8-2151742-4  
PNEUMATIC FEED WITH "SMART APPLICATOR" CONVERSION: 8-2151742-4  
SERVO FEED WITH "FINE CRIMP HEIGHT ADJUST": 8-2151742-5  
SERVO FEED WITH "NON-CRIMP HEIGHT ADJUST": 8-2151742-6
- ADJUSTMENT OF THE STRIPPER MAY BE REQUIRED WHEN MOVING THE APPLICATOR BETWEEN BENCH AND LEADMAKER APPLICATIONS.
- APPLY PART NUMBER 1-23419-5 LOCTITE TO THREADS OF ITEMS 62. APPLY PART NUMBER 2-23419-6 LOCTITE TO THREADS OF ITEMS 242. FOR -6 ONLY APPLY PART NUMBER 1-23419-5 LOCTITE TO THREADS OF ITEM 37.
- GREASE THREADS, GROOVE AND O-RING ON ITEMS 35 & 252.
- MAGNET, ITEM 166 MUST BE ORIENTED CORRECTLY IN ORDER TO PROPERLY ACTUATE THE COUNTER.
- CRIMP HEIGHT REFERENCE SETTING WAS THE SETTING USED WHEN THE APPLICATOR WAS QUALIFIED AT THE FACTORY. ADJUSTMENT MAY BE NECESSARY WHEN RUNNING APPLICATOR IN THE FIELD.
- SPARE FEED CAM STORAGE LOCATION REFER TO INSTRUCTION SHEET FOR ADDITIONAL INFORMATION.
- TO CONVERT THE APPLICATOR TO A NON-CARRIER CUTTING STYLE, REMOVE ITEM 13 AND ATTACH TO THE LOCATION ON THE BACK SIDE OF THE HOUSING. REFER TO INSTRUCTION SHEET FOR ADDITIONAL INFORMATION.
- WHEN ASSEMBLING -6 NON-CRIMP HEIGHT ADJUST APPLICATOR USE SHIM PACK 2119957-2 TO ALIGN APPLICATOR'S MAXIMUM WIRE CRIMP HEIGHT AT NORMAL TERMINATOR SHUT HEIGHT
- TERMINAL 1971781 REVISION 11. TERMINAL 1971782 REVISION 10

**\*WARNING**  
ON INSTALLATION, SET WIRE DISC, ITEM 40 TO LARGEST WIRE SIZE SETTING. USE OF SETTINGS BELOW MINIMUM REQUIRED CRIMP HEIGHT SETTING WILL CAUSE DAMAGE TO CRIMP TOOLING.

ITEM NO	DESCRIPTION	ITEM NO
-77	-7	-6
-5	-2	-1
2119957-2	APPLICATOR SHIM PACK	260
8-21084-0	O-RING, .676 ID, .070 DIA. MAT.	252
2119640-1	PUSH ROD, AIR FEED	250
1803259-1	BUSHING, FLANGED	249
2119641-1	FEED CAM, AIR FEED	248
2119798-1	DETENT PIN	247
PART NO	DESCRIPTION	ITEM NO

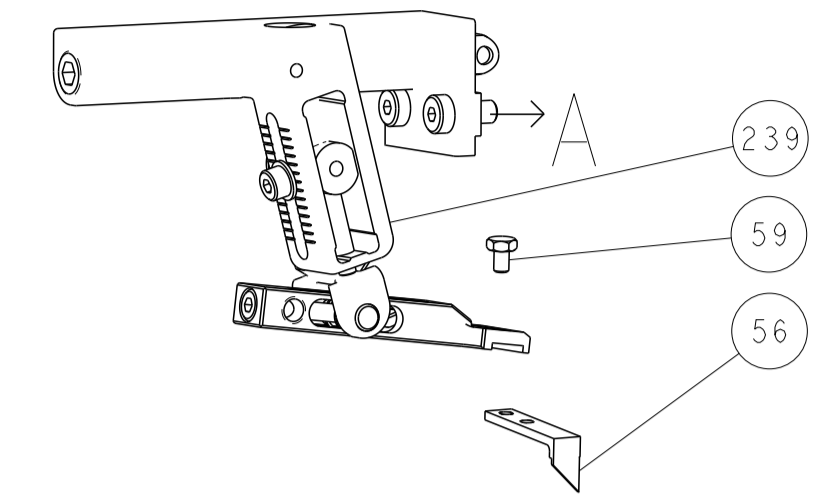
**ATLANTIC VERSION**  
Shown on sheets 1 of 4 & 2 of 4  
(Pacific version shown on sheets 3 of 4 & 4 of 4)

					SET UP GAUGE 2119599-1	LOC A	DIST 66	REVISIONS				
P	LTN	DESCRIPTION	DATE	OWN	APVD							
C		ECR-16-002768	26FEB2016	XZ	TE							
D		ECR-16-015666	04NOV2016	TB	TE							
-	1	-	1	1	1	1-22279-3	SPRING, COMPRESSION			246		
-	-	1	-	-	-	2119758-1	RAM, AMP STYLE, SIDE FEED, NON-ADJ.			245		
-	1	1	1	1	1	2119082-8	CAM, SNAIL, INSULATION ADJUSTMENT			244		
-	1	1	1	1	1	2079764-1	WASHER, WAVE SPRING, CREST-TO-CREST			243		
-	1	1	1	1	1	2119083-1	RETAINER, INSULATION DIAL			242		
-	1	1	1	1	1	7-18023-7	SCR, SKT HD CAP M3 X 4.0			241		
-	-	2	2	-	-	2168400-6	SHCS, LOW HEAD, RoHS, M5 X 16			240		
-	-	-	-	-	1	2119580-1	MECHANICAL FEED ASSEMBLY			239		
-	-	-	-	1	-	2063440-1	AIR FEED MODULE			238		
-	-	1	1	-	-	2119740-2	TAG IDENTIFICATION			213		
-	-	1	1	-	-	1901094-3	SPACER, FEEDER			198		
-	-	-	2	-	-	21045-3	RING, RETAIN, EXTERN, 3/16 CRESCENT			172		
-	1	1	1	1	1	994969-1	MAGNET, RARE EARTH HIGH ENERGY			166		
-	REF	REF	REF	REF	REF	994970-2	COUNTER, MAGNETIC			164		
-	-	-	-	1	-	240638-1	SPRING, FEED FINGER			163		
-	-	-	-	1	-	3-23627-7	PIN, RETAIN, GRVD, 3/16 X .854			137		
-	-	-	-	1	-	2119799-1	HOLDER, FEED FINGER, AF			136		
-	-	REF	REF	-	-	SEE NOTE 4	MEMORY CHIP, PROGRAMMED			135		
-	-	1	1	-	-	1633743-1	SERVO FEED LATCH ASM			133		
-	1	1	1	1	1	1-18028-2	WASHER, FLAT, REG M4			119		
-	-	REF	REF	-	-	2119944-1	FEED FINGER ASSEMBLY, SF			117		
-	1	1	1	1	1	455888-4	SPACER, CRIMPER			82		
-	1	1	1	1	1	22278-8	SPRING, COMPRESSION			77		
-	1	1	1	1	1	854769-4	HOLDER, INS			74		
-	1	1	1	1	1	2119956-1	DOCUMENTATION PACKAGE			71		
-	1	1	1	1	1	2119791-5	DEPRESSOR, WIRE			70		
-	1	-	-	1	1	2119740-1	TAG IDENTIFICATION			67		
-	2	2	2	2	2	2168078-1	SCREW, DRIVE, RH, RoHS, 2 x .188			66		
-	1	-	1	1	1	2119793-1	LIMITER, ADJUSTMENT BOLT			63		
-	3	-	3	3	3	992763-5	SCR, SET, SOC, CONE POINT, M3 x 4.0			62		
-	1	1	1	1	1	2079383-4	SCR, BHSC, RoHS (M4 X 8)			60		
-	-	-	-	1	1	5-18022-5	SCR, HEX HD CAP, M4 X 6.0			59		
-	1	1	1	1	1	21028-2	PIN, SLOTTED SPRING .062 X .250			58		
-	-	-	-	1	1	1338685-1	PAWL, FEED			56		
-	4	4	4	4	4	2168400-1	SHCS, LOW HEAD, RoHS, M4 X 12			54		
-	2	2	2	2	2	2168083-3	SCR, SKT HD CAP, RoHS, M4 X 12.0			53		
-	1	1	1	1	1	5018030-1	NUT, HEX, REG, RoHS, M3			52		
-	1	1	1	1	1	811242-5	BUMPER, HOLD DOWN			51		
-	1	1	1	1	1	690753-2	SPACER, TONKER			50		
-	-	-	-	1	2	18023-9	SCR, SKT HD CAP M4 X 6.0			49		
-	-	-	-	-	1	2119652-1	FEED CAM, PRE FEED			48		
-	-	-	-	-	1	2119653-1	FEED CAM, POST FEED			47		
-	1	1	1	1	1	2119656-9	APPLICATOR BASIC ASSEMBLY, SF			46		
-	1	-	1	1	1	2119370-1	RAM, AMP STYLE, SIDE FEED			44		
-	1	1	1	1	1	2079383-7	SCR, BHSC, RoHS (M8 X 25)			41		
-	1	-	1	1	1	2119645-1	DISC, NUMBERED FA WIRE ADJUSTMENT			40		
-	1	-	1	1	1	2119957-1	APPLICATOR SHIM PACK			39		
-	1	1	1	1	1	2119644-2	RAM WASHER, PRECISION			38		
-	1	1	1	1	1	2119085-1	FA HEAD, ATLANTIC STYLE			37		
-	1	-	1	1	1	2119092-1	BOLT, ADJUSTMENT			35		
-	1	1	1	1	1	1752356-1	SUPPORT, TERMINAL			34		
-	2	2	2	2	2	2079383-5	SCR, BHSC, RoHS (M4 X 20)			33		
-	1	1	1	1	1	2161328-1	HEX HEAD, FLANGED, M5 x 8mm LONG			32		
-	1	1	1	1	1	1320908-7	SPACER, STRIP GUIDE			30		
-	1	1	1	1	1	2119959-1	ASSEMBLY, STRIP GUIDE			29		
-	1	1	1	1	1	1-455888-0	SPACER, CRIMPER			28		
-	1	1	1	1	1	1320928-2	STRIP GUIDE			24		
-	1	1	1	1	1	2168083-2	SCR, SKT HD CAP, RoHS, M4 X 8.0			21		
-	1	1	1	1	1	1-18028-2	WASHER, FLAT, REG M4			20		
-	1	1	1	1	1	2119533-1	STRIPPER, SIDE FEED			19		
-	1	1	1	1	1	2119806-1	INSERT, SHEAR			13		
-	1	1	1	1	1	3-22280-3	SPRING, COMPRESSION			12		
-	1	1	1	1	1	1-356885-4	STOP, SHEAR			11		
-	1	1	1	1	1	2119805-1	SHEAR HOLDER, FRONT			10		
-	1	1	1	1	1	462006-6	FLOATING SHEAR, FRONT			9		
1	1	1	1	1	1	1-1803079-2	ANVIL, WITH STABILIZER			8		
-	1	1	1	1	1	4-240641-2	SPACER			7		
-	-	-	-	-	-	-	-			6		
-	1	1	1	1	1	1-2119780-1	DEPRESSOR, SHEAR			5		
-	1	1	1	1	1	238011-2	BLOCK, CRIMPER SPACER			4		
1	1	1	1	1	1	9-1803187-3	CRIMPER, INSULATION F			3		
-	1	1	1	1	1	455888-3	SPACER, CRIMPER			2		
1	1	1	1	1	1	3-456406-3	CRIMPER, WIRE PREMIUM			1		
-77	-7	-6	-5	-2	-1	PART NO	DESCRIPTION			ITEM NO		

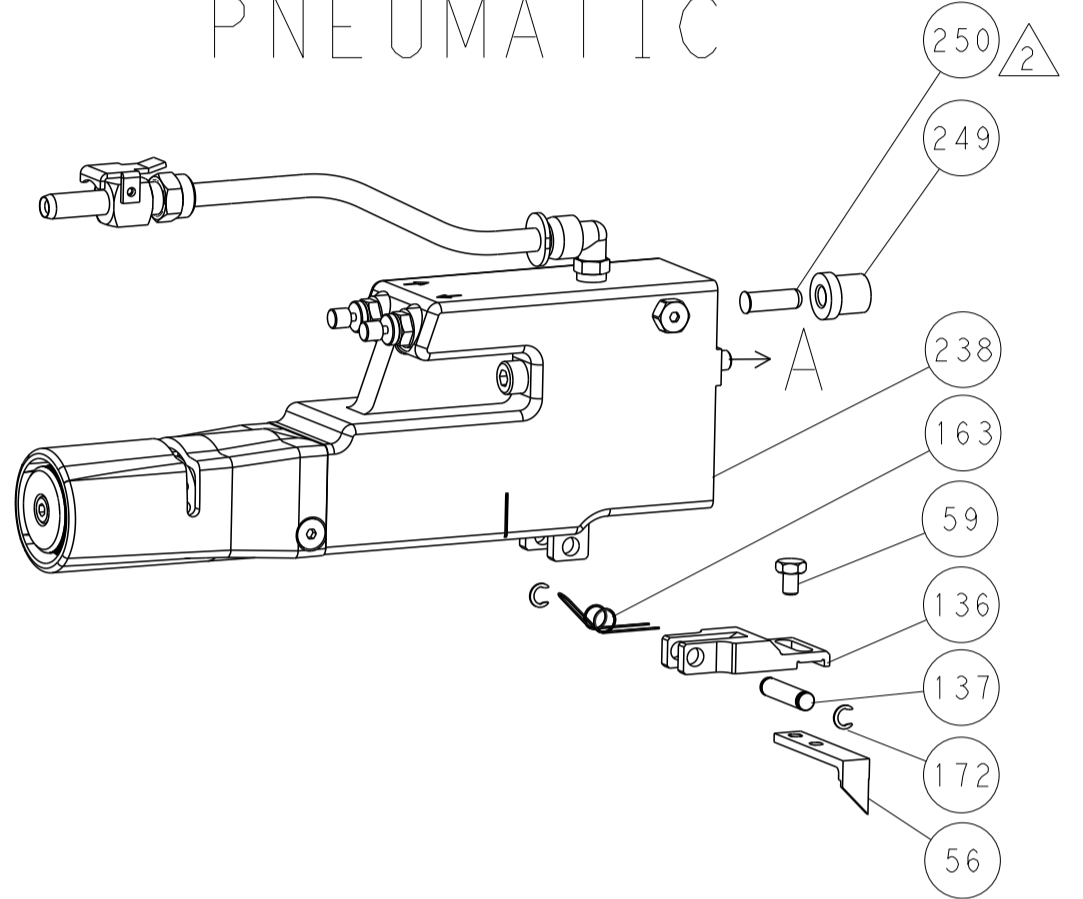
DIMENSIONS:		TOLERANCES UNLESS OTHERWISE SPECIFIED:		DWG: Y.YIN 03SEP2012		CHK: G.BAILEY 03SEP2012		TE Connectivity Harrisburg, PA 17105-3608	
mm		0 PLC ±	1 PLC ±	APVD: S.XI 03SEP2012		NAME: Ocean Side Feed Applicator		SIZE: CAGE CODE: DRAWING NO: RESTRICTED TO: 1:2 SHEET 1 OF 4 REV D	
MATERIAL:		FINISH:		WEIGHT:		A1 00779 C=2151742		Customer Accessible Production Drawing	

LOC		DIST		REVISIONS			
A	66	P	LTM	DESCRIPTION	DATE	DWN	APVD
-	-	-	-	SEE SHEET 1	-	-	-

### FEED TYPE MECHANICAL



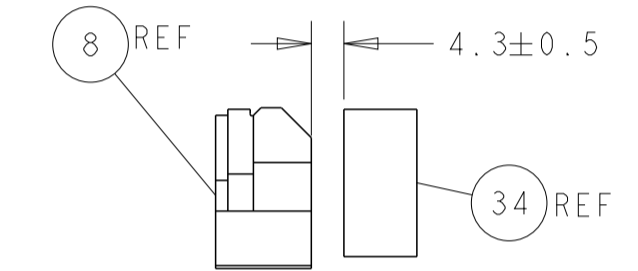
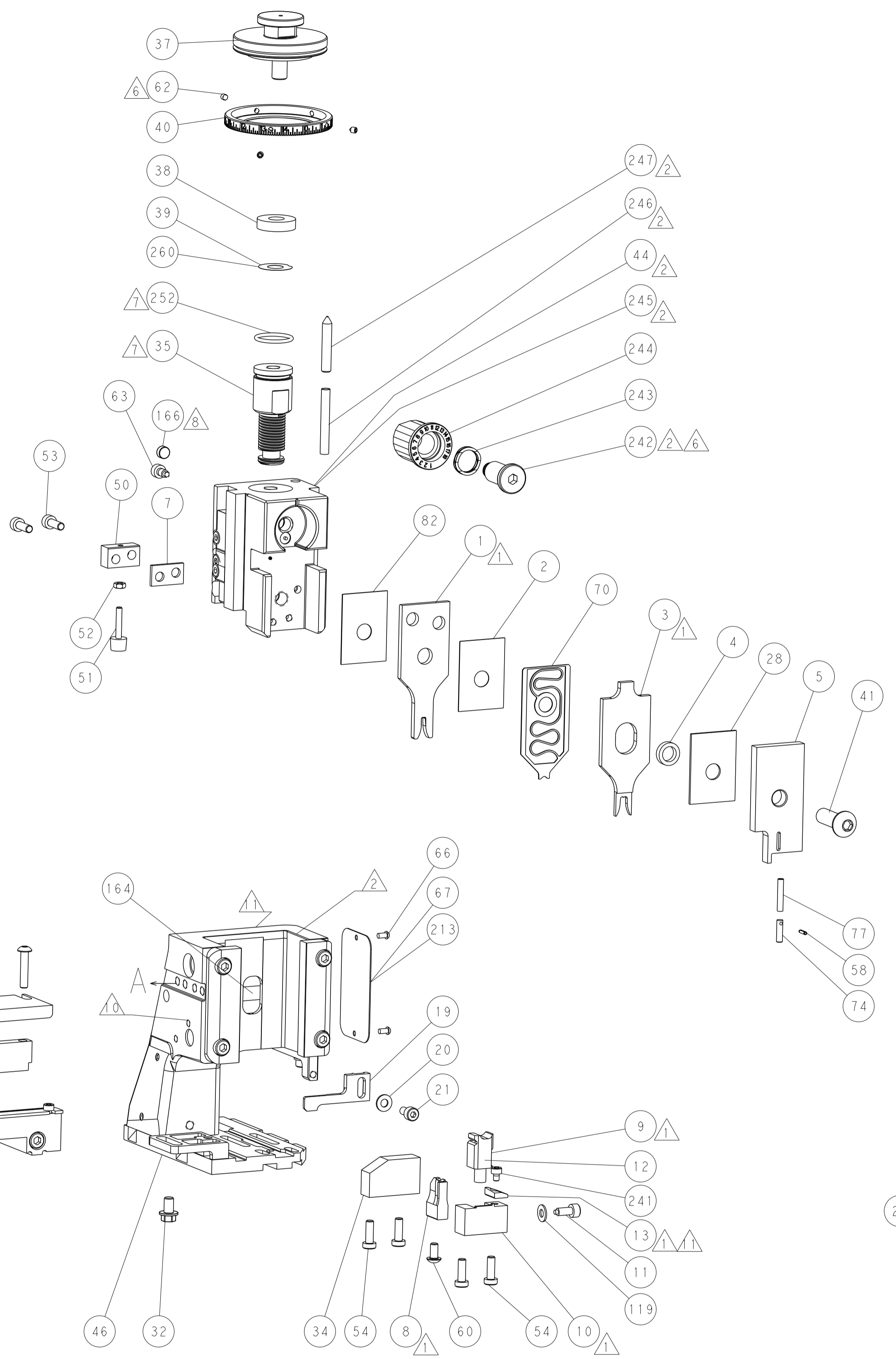
### PNEUMATIC



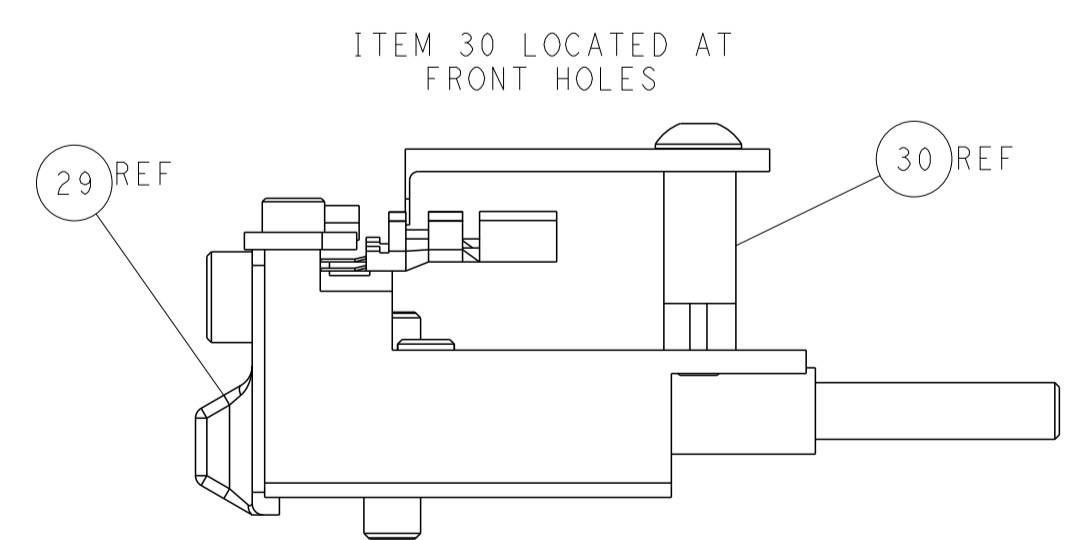
### SERVO LATCH PLATE



### CAM POSITIONS



TERMINAL SUPPORT LOCATION



FEED TRACK POSITION GUIDE BY INSULATION BARREL

**ATLANTIC VERSION**  
 Shown on sheets 1 of 4 & 2 of 4  
 (Pacific version shown on sheets 3 of 4 & 4 of 4)

DIMENSIONS:		TOLERANCES UNLESS OTHERWISE SPECIFIED:		DWN Y. YIN 03SEP2012		TE Connectivity Harrisburg, PA 17105-3608	
mm	0 PLC	±		CHK G. BAILEY 03SEP2012	NAME	Ocean Side Feed Applicator	
	1 PLC	±		APVD S. XI 03SEP2012	PRODUCT SPEC	RESTRICTED TO	
	2 PLC	±			APPLICATION SPEC	SIZE	CAGE CODE
	3 PLC	±				00779	2151742
	4 PLC	±				Customer Accessible Production Drawing	SCALE
	ANGLES	±				1:2	SHEET 2 OF 4
MATERIAL	FINISH						REV D

PART NUMBER	REVISION	DESCRIPTION	FEED TYPE	APPLICATOR STYLE CONVERSION CHART						
				CONVERT TO	PART NUMBERS REQUIRED					
2-2151742-1	D	FINE CRIMP HEIGHT ADJUST	MECHANICAL	PNEUMATIC FEED	2119950-1	1338685-1	5-18022-5	2119641-2	2119799-1	2063440-1
				SERVO LATCH PLATE	2119951-1	-	8-2151742-5	1901094-3	-	2168400-6 (QUANTITY 2)
				SMART APPLICATOR	2161326-1	-	8-2151742-4	-	-	-
				MECHANICAL FEED	2119949-1	1338685-1	5-18022-5	2119653-2	-	-
2-2151742-2	D	FINE CRIMP HEIGHT ADJUST	PNEUMATIC	SERVO LATCH PLATE	2119951-1	-	8-2151742-5	1901094-3	-	2168400-6 (QUANTITY 2)
				SMART APPLICATOR	2161326-1	-	8-2151742-4	-	-	-
				MECHANICAL FEED	2119949-1	1338685-1	5-18022-5	2119653-2	-	-
				PNEUMATIC FEED	2119950-1	1338685-1	5-18022-5	2119641-2	2119799-1	2063440-1
2-2151742-5	D	FINE CRIMP HEIGHT ADJUST	SERVO LATCH PLATE	-	-	-	-	-	-	-
2-2151742-7	D	FINE CRIMP HEIGHT ADJUST	NONE	-	-	-	-	-	-	-
7-2151742-7	D	CRIMP TOOLING KIT	-	-	-	-	-	-	-	-

APPLICATOR DATA		
CRIMP SIZE	TYPE	
WIRE 2.29 mm [ .090 ]	F	
INSUL 4.06 mm [ 1.60 ]	F	
APPLICATOR INSTRUCTIONS 408-10389		

TERMINAL DATA: TE TERMINAL		TE CRIMP SPECIFICATION	
TERMINAL NAME: RECEPTACLE CONTACT NEXT GENERATION SOFET SHELL			
WIRE STRIP LENGTH 4.20-4.80 mm [ 1.65-.189 IN ]		INSULATION DIAMETER RANGE Ø3.40-3.70 mm [ 1.34-.146 IN ]	
TERMINAL APPLICATION SPECIFICATION 114-106118		-	-
TERMINALS APPLIED			
TE TERMINAL	TE TERMINAL	TE TERMINAL	TE TERMINAL
1971781-1	1971781-2	1971782-1	1971782-2

WIRE SIZE	CRIMP HEIGHT mm [INCH]	CRIMP HEIGHT REFERENCE SETTING
14 AWG OR 2.10mm2	1.63 +/- 0.05 [ .064 +/- .002 ]	9.0

- RECOMMENDED SPARE PARTS
- GREASE BEARING SURFACES LIGHTLY
- 3. LUBRICATE DAILY PER THE APPLICATOR INSTRUCTION SHEET SUPPLIED WITH THE APPLICATOR.
- APPLICATOR SPECIFIC DATA TO BE ENTERED INTO BLANK MEMORY CHIP AT ASSEMBLY. SEE BELOW FOR PART NUMBER:  
MECHANICAL FEED WITH "SMART APPLICATOR" CONVERSION: 8-2151742-4  
PNEUMATIC FEED WITH "SMART APPLICATOR" CONVERSION: 8-2151742-4  
SERVO FEED WITH "FINE CRIMP HEIGHT ADJUST": 8-2151742-5
- 5. ADJUSTMENT OF THE STRIPPER MAY BE REQUIRED WHEN MOVING THE APPLICATOR BETWEEN BENCH AND LEADMAKER APPLICATIONS.
- APPLY PART NUMBER 1-23419-5 LOCTITE TO THREADS OF ITEMS 62. APPLY PART NUMBER 2-23419-6 LOCTITE TO THREADS OF ITEMS 242.
- GREASE THREADS, GROOVE AND O-RING ON ITEMS 139 & 152.
- MAGNET MUST BE ORIENTED CORRECTLY IN ORDER TO PROPERLY ACTUATE THE COUNTER.
- CRIMP HEIGHT REFERENCE SETTING WAS THE SETTING USED WHEN THE APPLICATOR WAS QUALIFIED AT THE FACTORY. ADJUSTMENT MAY BE NECESSARY WHEN RUNNING APPLICATOR IN THE FIELD.
- SPARE FEED CAM STORAGE LOCATION REFER TO INSTRUCTION SHEET FOR ADDITIONAL INFORMATION.
- TO CONVERT THE APPLICATOR TO A NON-CARRIER CUTTING STYLE, REMOVE ITEM 13 AND ATTACH TO THE LOCATION ON BACK SIDE OF THE HOUSING. REFER TO INSTRUCTION SHEET FOR ADDITIONAL INFORMATION.
- TERMINAL 1971781 REVISION 11. TERMINAL 1971782 REVISION 10

**\*WARNING**  
ON INSTALLATION, SET WIRE DISC, ITEM 40 TO LARGEST WIRE SIZE SETTING. USE OF SETTINGS BELOW MINIMUM REQUIRED CRIMP HEIGHT SETTING WILL CAUSE DAMAGE TO CRIMP TOOLING.

-	1	1	1	1	2119782-1	FINE ADJUST HEAD ASM, PACIFIC STYLE	251
-	-	-	1	-	2119640-1	PUSH ROD, AIR FEED	250
-	-	-	1	-	1803259-1	BUSHING, FLANGED	249
-	1	1	1	1	1-22279-3	SPRING, COMPRESSION	246
-77	-27	-25	-22	-21	PART NO	DESCRIPTION	ITEM NO

**PACIFIC VERSION**  
Shown on sheets 3 of 4 & 4 of 4  
(Atlantic version shown on sheets 1 of 4 & 2 of 4)

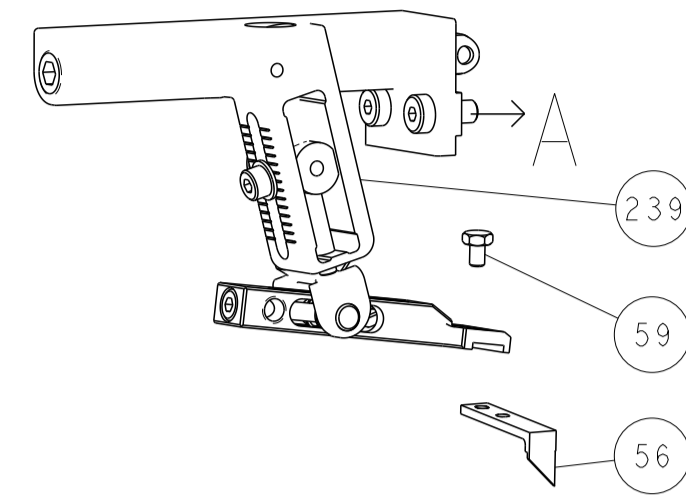
SET UP GAUGE	LOC	DIST	REVISIONS					
2119599-1	A	66	P	LTM	DESCRIPTION	DATE	OWN	APVD
-	-	-	-	-	SEE SHEET 1	-	-	-

-	1	1	1	1	2119082-8	CAM, SNAIL, INSULATION ADJUSTMENT	244
-	1	1	1	1	2079764-1	WASHER, WAVE SPRING, CREST-TO-CREST	243
-	1	1	1	1	2119083-1	RETAINER, INSULATION DIAL	242
-	1	1	1	1	7-18023-7	SCR, SKT HD CAP M3 X 4.0	241
-	-	2	-	-	2168400-6	SHCS, LOW HEAD, RoHS, M5 X 16	240
-	-	-	-	1	2119580-1	MECHANICAL FEED ASSEMBLY	239
-	-	-	-	1	2063440-1	AIR FEED MODULE	238
-	-	1	-	-	2119740-2	TAG, IDENTIFICATION	213
-	-	1	-	-	1901094-3	SPACER, FEEDER	198
-	-	-	2	-	21045-3	RING, RETAIN, EXTERN, 3/16 CRESCENT	172
-	1	1	1	1	994969-1	MAGNET, RARE EARTH HIGH ENERGY	166
-	REF	REF	REF	REF	994970-2	COUNTER, MAGNETIC	164
-	-	-	1	-	240638-1	SPRING, FEED FINGER	163
-	1	1	1	1	8-21084-1	O-RING, .801 ID, .070 DIA. MAT.	152
-	-	-	1	-	2119641-2	FEED CAM, AIR FEED	151
-	1	1	1	1	2119798-2	DETENT PIN	145
-	1	1	1	1	2079383-8	SCR, BHSC, RoHS (M4 X 16)	144
-	4	4	4	4	2168400-5	SHCS, LOW HEAD, RoHS, M4 X 20	143
-	-	-	-	1	2119653-2	FEED CAM, POST FEED	142
-	1	1	1	1	1-2119656-0	APPLICATOR BASIC ASSEMBLY, SF	141
-	1	1	1	1	2119650-1	RAM, ASIAN STYLE, SIDE FEED	140
-	1	1	1	1	2119092-2	BOLT, ADJUSTMENT	139
-	-	-	1	-	3-23627-7	PIN, RETAIN, GRVD, 3/16 X .854	137
-	-	-	1	-	2119799-1	HOLDER, FEED FINGER, AF	136
-	-	REF	-	-	SEE NOTE 4	MEMORY CHIP, PROGRAMMED	135
-	-	1	-	-	1633743-1	SERVO FEED LATCH ASM	133
-	1	1	1	1	1-18028-2	WASHER, FLAT, REG M4	119
-	-	REF	-	-	2119944-1	FEED FINGER ASSEMBLY, SF	117
-	1	1	1	1	455888-4	SPACER, CRIMPER	82
-	1	1	1	1	22278-8	SPRING, COMPRESSION	77
-	1	1	1	1	854769-4	HOLDER, INS	74
-	1	1	1	1	2119956-1	DOCUMENTATION PACKAGE	71
-	1	1	1	1	2119791-5	DEPRESSOR, WIRE	70
-	1	-	1	1	2119740-1	TAG, IDENTIFICATION	67
-	2	2	2	2	2168078-1	SCREW, DRIVE, RH, RoHS, 2 x .188	66
-	1	1	1	1	2119793-1	LIMITER, ADJUSTMENT BOLT	63
-	3	3	3	3	992763-5	SCR, SET, SOC, CONE POINT, M3 x 4.0	62
-	-	-	1	1	5-18022-5	SCR, HEX HD CAP, M4 X 6.0	59
-	1	1	1	1	21028-2	PIN, SLOTTED SPRING .062 X .250	58
-	-	-	1	1	1338685-1	PAWL, FEED	56
-	2	2	2	2	2168083-3	SCR, SKT HD CAP, RoHS, M4 X 12.0	53
-	1	1	1	1	5018030-1	NUT, HEX, REG, RoHS, M3	52
-	1	1	1	1	811242-5	BUMPER, HOLD DOWN	51
-	1	1	1	1	690753-2	SPACER, TONKER	50
-	-	-	1	2	18023-9	SCR, SKT HD CAP M4 X 6.0	49
-	-	-	-	1	2119652-1	FEED CAM, PRE FEED	48
-	1	1	1	1	2079383-7	SCR, BHSC, RoHS (M8 X 25)	41
-	1	1	1	1	2119645-1	DISC, NUMBERED FA WIRE ADJUSTMENT	40
-	1	1	1	1	2119957-1	APPLICATOR SHIM PACK	39
-	1	1	1	1	2119644-2	RAM WASHER, PRECISION	38
-	1	1	1	1	1752356-1	SUPPORT, TERMINAL	34
-	2	2	2	2	2079383-5	SCR, BHSC, RoHS (M4 X 20)	33
-	1	1	1	1	2161328-1	HEX HEAD, FLANGED, M5 x 8mm LONG	32
-	1	1	1	1	1320908-7	SPACER, STRIP GUIDE	30
-	1	1	1	1	2119959-1	ASSEMBLY, STRIP GUIDE	29
-	1	1	1	1	1-455888-0	SPACER, CRIMPER	28
-	1	1	1	1	1320928-2	STRIP GUIDE	24
-	1	1	1	1	2168083-2	SCR, SKT HD CAP, RoHS, M4 X 8.0	21
-	1	1	1	1	1-18028-2	WASHER, FLAT, REG M4	20
-	1	1	1	1	2119533-1	STRIPPER, SIDE FEED	19
-	1	1	1	1	2119806-1	INSERT, SHEAR	13
-	1	1	1	1	3-22280-3	SPRING, COMPRESSION	12
-	1	1	1	1	1-356885-4	STOP, SHEAR	11
-	1	1	1	1	2119805-1	SHEAR HOLDER, FRONT	10
-	1	1	1	1	462006-6	FLOATING SHEAR, FRONT	9
-	1	1	1	1	1-1803079-2	ANVIL, WITH STABILIZER	8
-	1	1	1	1	4-240641-2	SPACER	7
-	-	-	-	-	-	-	6
-	1	1	1	1	1-2119780-1	DEPRESSOR, SHEAR	5
-	1	1	1	1	238011-2	BLOCK, CRIMPER SPACER	4
-	1	1	1	1	9-1803187-3	CRIMPER, INSULATION F	3
-	1	1	1	1	455888-3	SPACER, CRIMPER	2
-	1	1	1	1	3-456406-3	CRIMPER, WIRE PREMIUM	1
-77	-27	-25	-22	-21	PART NO	DESCRIPTION	ITEM NO

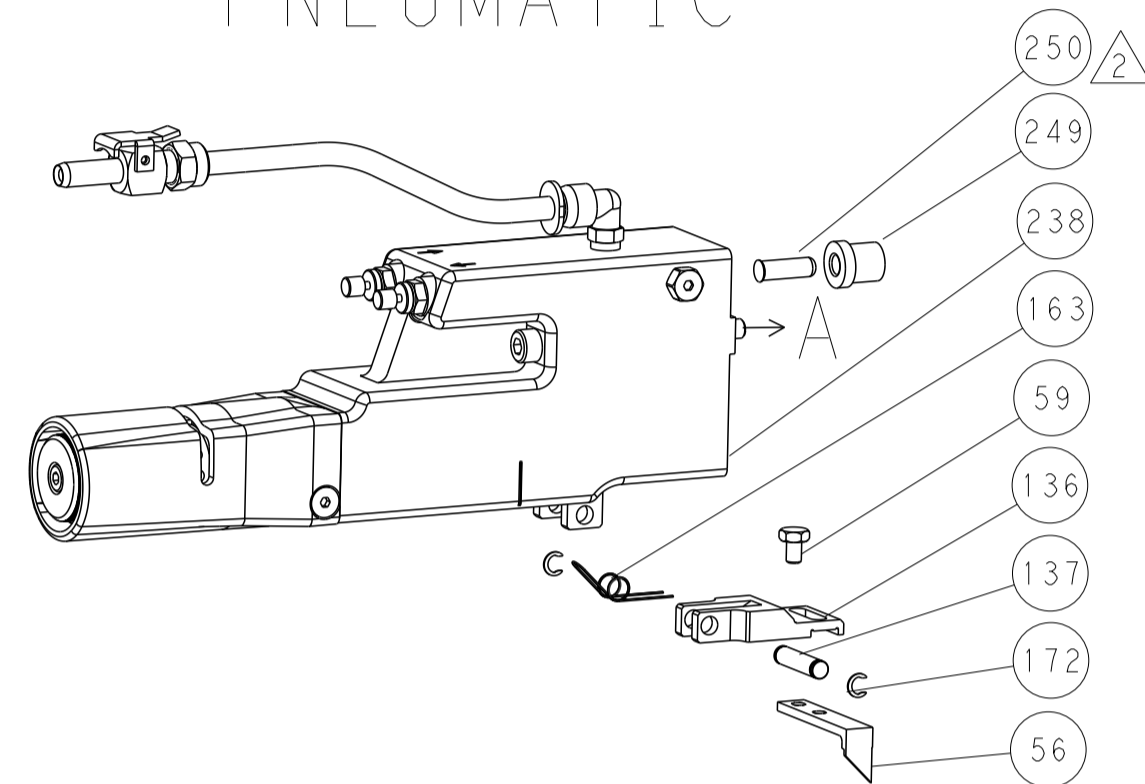
DIMENSIONS:		TOLERANCES UNLESS OTHERWISE SPECIFIED:		DRAWING NO		NAME	
mm	0 PLC ±	1 PLC ±	2 PLC ±	3 PLC ±	4 PLC ±	ANGLES ±	FINISH
MATERIAL	FINISH	WEIGHT	SCALE	SHEET	OF	REV	D
Customer Accessible Production Drawing				SCALE	1:2	SHEET	3 OF 4

LOC		DIST		REVISIONS			
A	66	P	LTM	DESCRIPTION	DATE	OWN	APVD
-	-	-	-	SEE SHEET 1	-	-	-

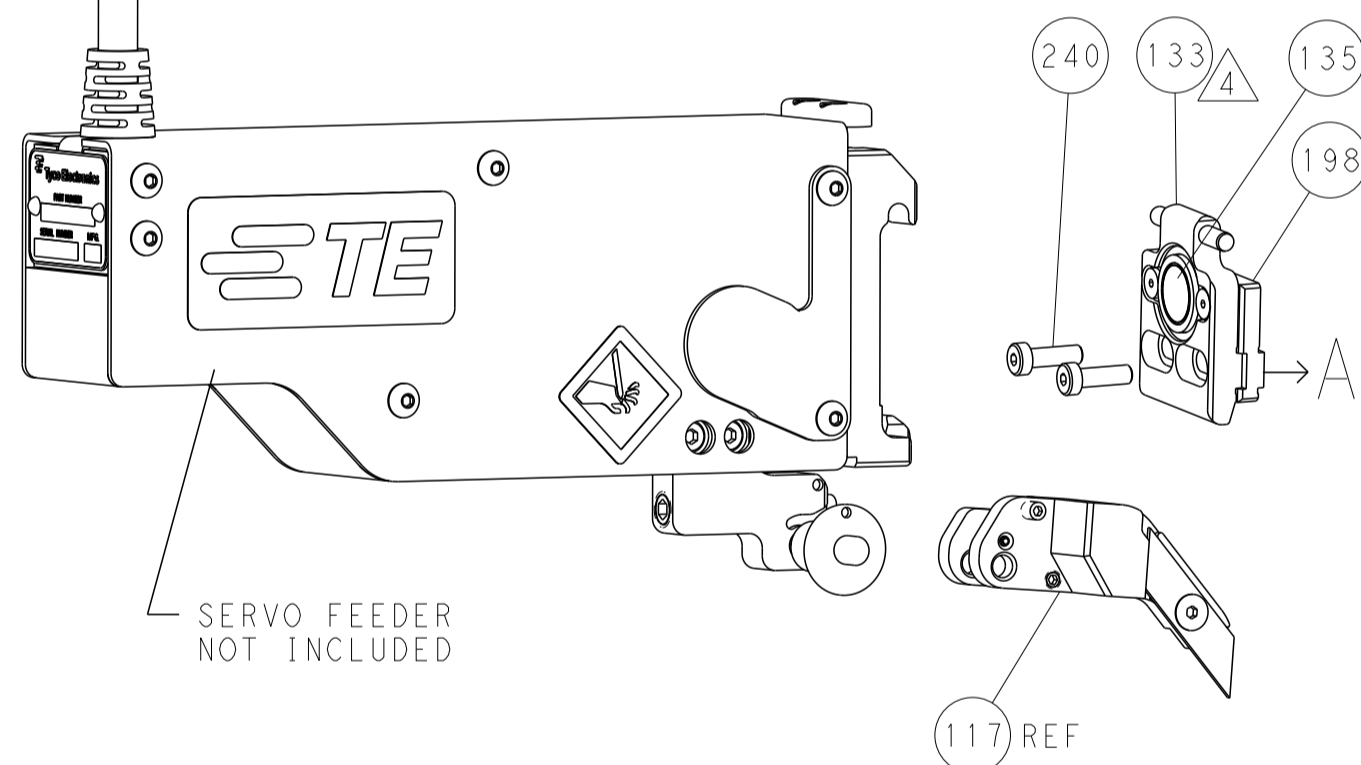
# FEED TYPE MECHANICAL



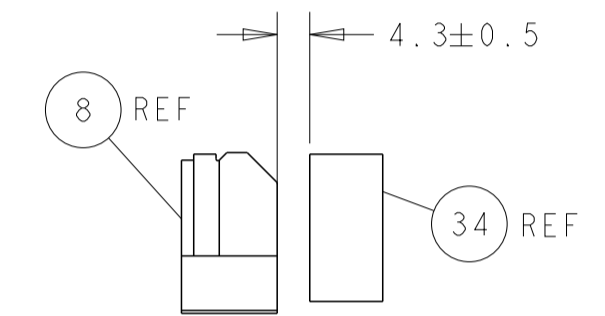
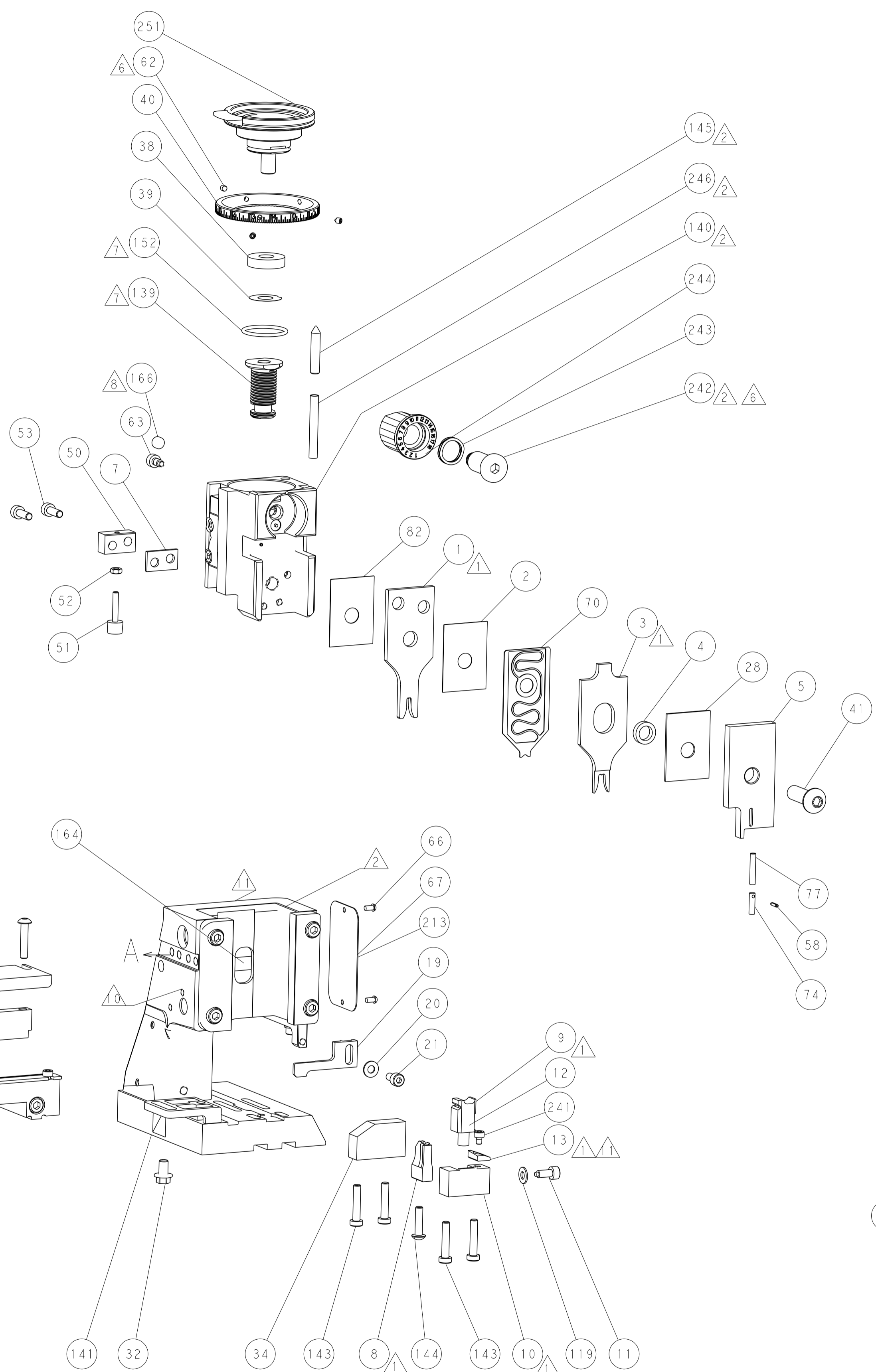
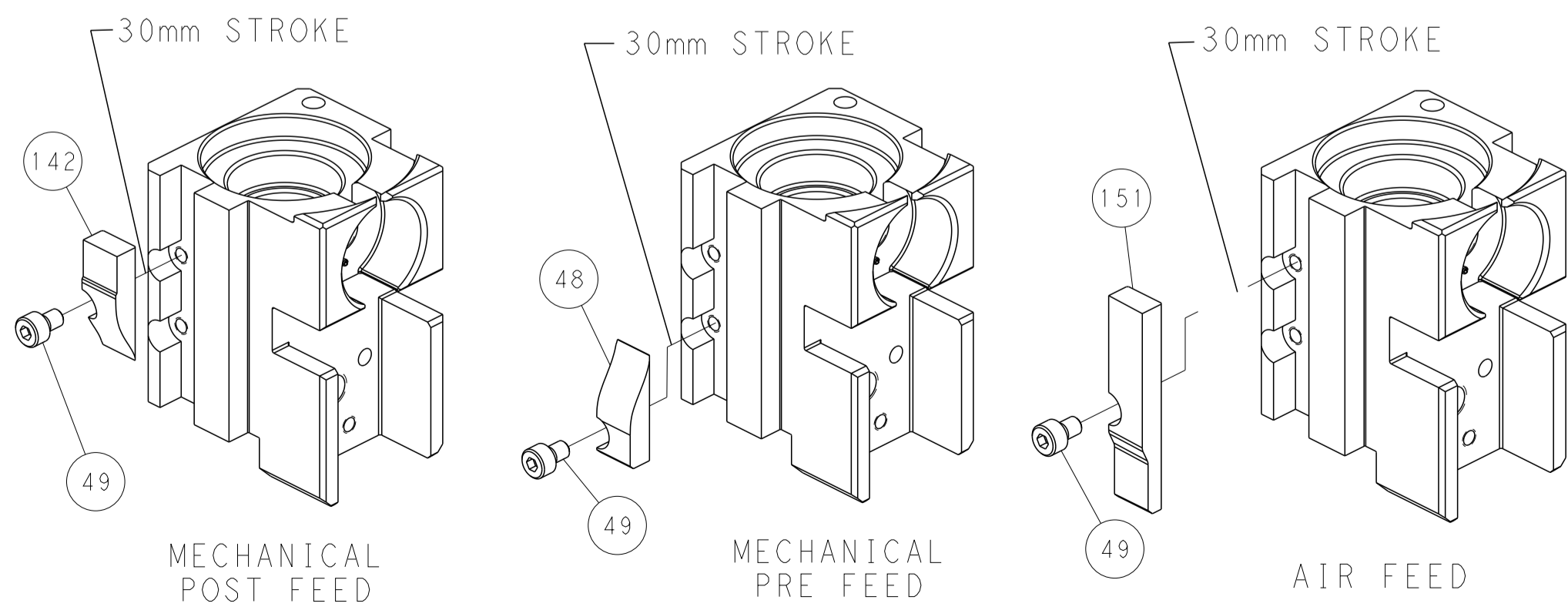
# PNEUMATIC



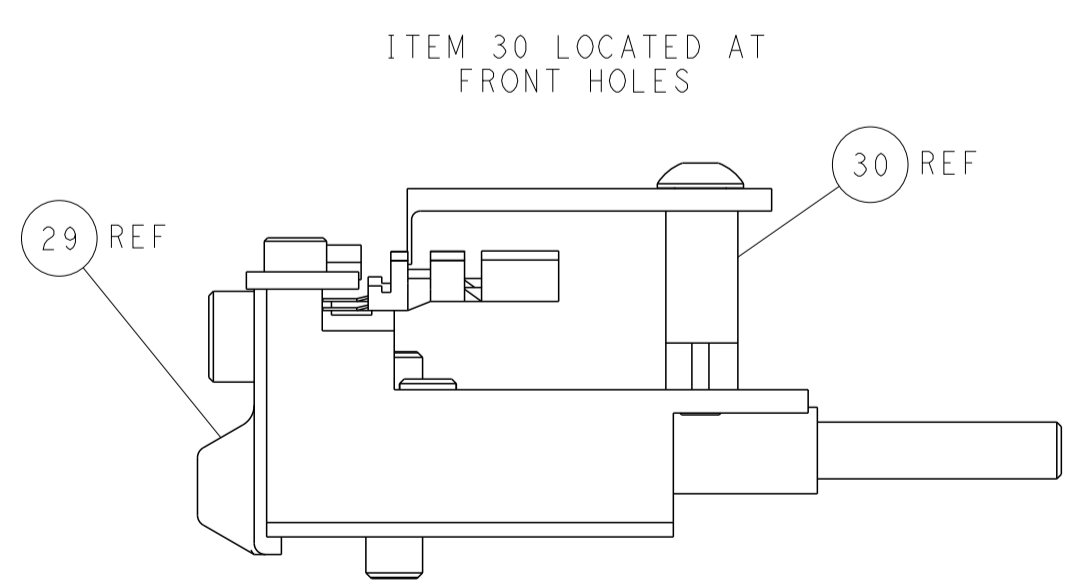
# SERVO LATCH PLATE



# CAM POSITIONS



TERMINAL SUPPORT LOCATION



FEED TRACK POSITION GUIDE BY INSULATION BARREL

**PACIFIC VERSION**  
 Shown on sheets 3 of 4 & 4 of 4  
 (Atlantic version shown on sheets 1 of 4 & 2 of 4)

DIMENSIONS:		TOLERANCES UNLESS OTHERWISE SPECIFIED:		DWN Y. YIN 03SEP2012		STE Connectivity Harrisburg, PA 17105-3608	
mm	0 PLC ±	1 PLC ±	2 PLC ±	3 PLC ±	4 PLC ±	NAME	Ocean Side Feed Applicator
MATERIAL:		FINISH:		APVD S. XI 03SEP2012		RESTRICTED TO	
				PRODUCT SPEC		SIZE CAGE CODE DRAWING NO	
				APPLICATION SPEC		A1 00779 C=2151742	
				WEIGHT		SCALE 1:2 SHEET 4 OF 4 REV D	
				Customer Accessible Production Drawing		SHEETS 1 & 2 ARE NOT REQUIRED FOR PACIFIC VERSION	