

60-LCVE Series

FEATURES:



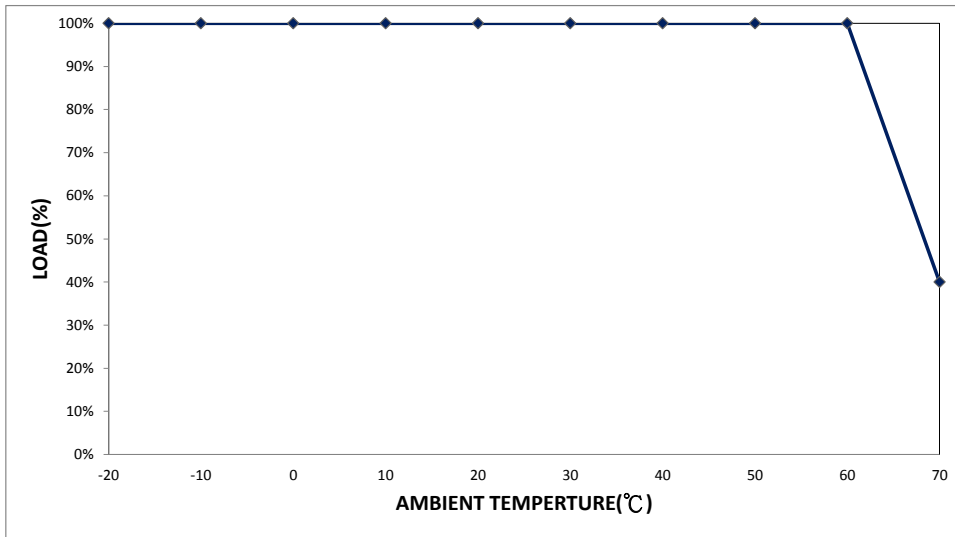
- AC Input 90~305 Vac Nominal
- AC Inrush current: 50 A @ 230 Vac Cold start
- Power Factor: > 0.98 @ 115 Vac / > 0.92 @ 230 Vac
- Protection: SCP / OVP / OTP / OCP
- High Operating Ambient Temp.: -20 °C ~ +60 °C
- Surge Protection: L-N 1kV, L/N-FG 2kV
- Safety: UL / PSE
- EMI: meets CE / FCC
- Comply with Indoor/Outdoor Waterproof (IP 67)
- Warranty: 5 years (refer to LinkCom warranty policy)
- RoHS Compliant

PRODUCT SPECIFICATION						
MODEL	DC OUTPUT POWER(W)	DC OUTPUT VOLTAGE(V)	OUTPUT CURRENT(A)	OUTPUT Voltage TOLERANCE	EFFICIENCY	O/P NOISE(P-P,V)
LCVE-060U125-00	60	12	5	±5%	85%	0.25
LCVE-060U240-00	60	24	2.5	±5%	87%	0.3

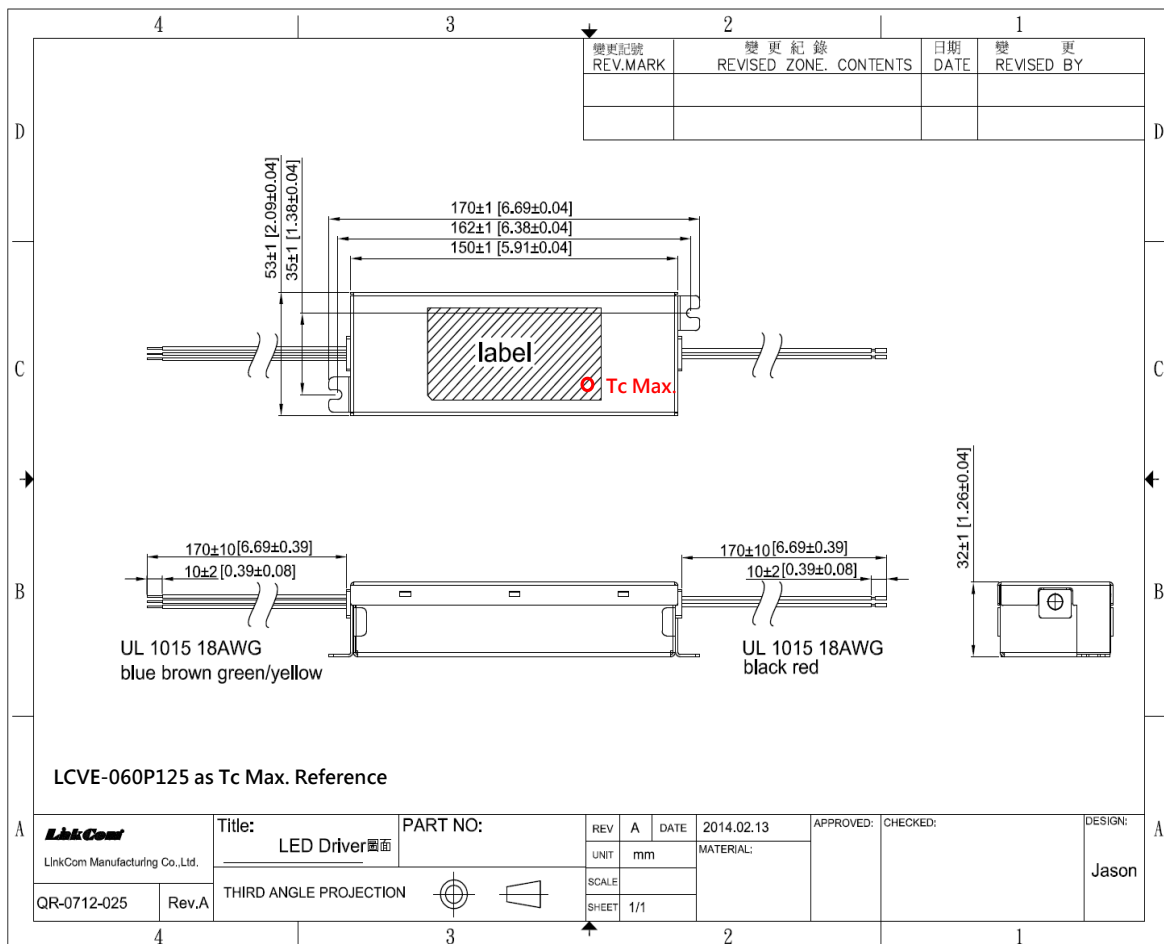
ELECTRICAL SPECIFICATION	
INPUT VOLTAGE RANGE	90-305 Vac, 127-431 Vdc, Normal: 100-277 Vac
INPUT FREQUENCY	Range: 47-63 Hz, Normal: 50-60 Hz
ACTIVE POWER FACTOR	> 0.98 @ 115 Vac / > 0.92 @ 230 Vac at Full Load and Rated Output Voltage
THD	NA
TURN ON DELAY TIME	< 1s at Full Load 120 - 277 Vac
AC CURRENT	0.9 A / 120 Vac
INRUSH CURRENT (Max)	Cold Start 50 A @ 230 Vac
LEAKAGE CURRENT	< 0.7 mA / 230 Vac
SHORT CIRCUIT PROTECTION	The SCP will restart automatically after the fault condition is removed
OVER VOLTAGE PROTECTION	The OVP will restart automatically after the fault condition is removed
OVER TEMP. PROTECTION	shut down and latch off o/p voltage , re-power on to recover
OVER CURRENT PROTECTION	120%~160% rated output power ; Hiccup mode
OPERATING TEMP.	-20°C ~ +60°C
STORAGE TEMP.	-40°C ~ +80°C
RELATIVE HUMIDITY	10% to +90%, non-cond.
SAFETY	UL879 / PSE
EMI	meets CE / FCC Part15
WITHSTAND VOLTAGE	I/P-O/P : 3 kVac, O/P-Grnd : 1.5 kVac, I/P-Grnd : 1.5 kVac
ISOLATION RESISTANCE	I/P-O/P, I/P-FG,O/P-FG :10M Ω / 500 Vdc / 25°C / 70% RH
DIMENSION (L*W*H)	170 * 53 * 32 mm 【6.69 *2.09 * 1.26 inch】
(1) All parameters specified at 230 Vac input unless otherwise noted. (2) All specifications Typical at 25°C, unless otherwise noted, at normal line and load. (3) Ripple and Noise measured directly at pins/terminals at nom. load, 0.1uF bypass and 47uF electrolytic, pk-pk at 20MHz bandwidth. (4) Specified for free-air convection cooling. (5) Minimum load is NOT required for proper operation . (6) 100% Production Tested.	

* REFERENCE: www.linkcom.com.tw
 * Please contact sales@linkcom.com.tw, sales@linkcomusa.com for more information

DERATING CURVE

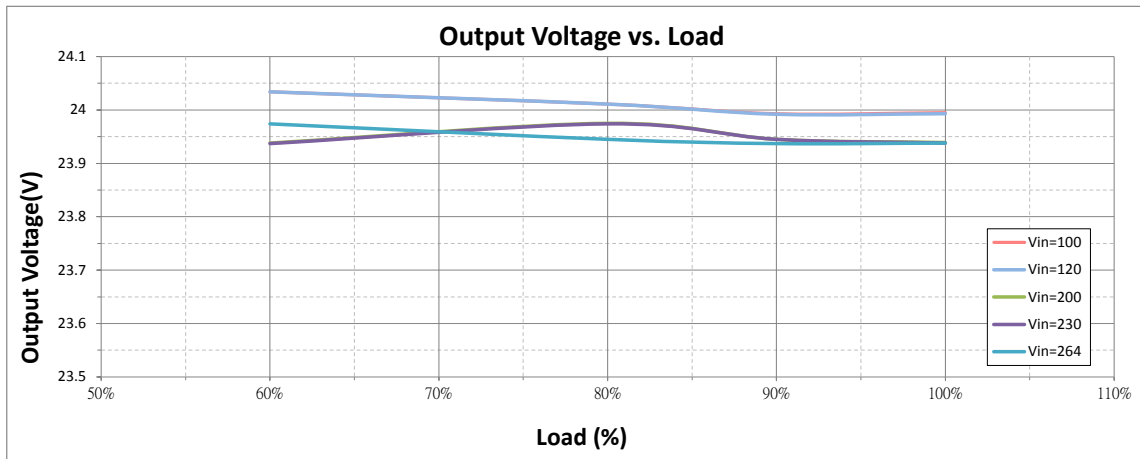


DIMENSIONS

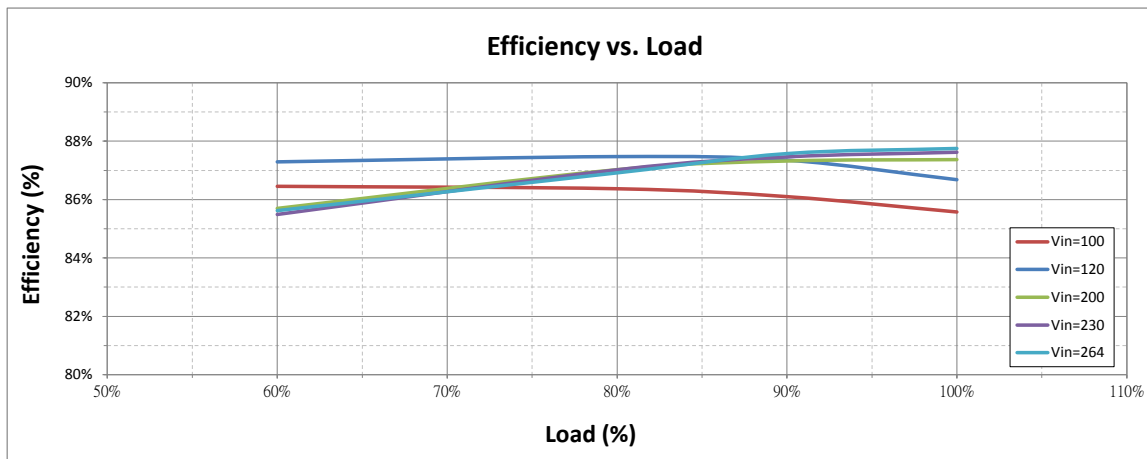


* REFERENCE: www.linkcom.com.tw

Output Voltage vs. Load(LCVE-060P240-P0)



Efficiency vs. Load(LCVE-060P240-P0)



PF vs. Load(LCVE-060P240-P0)

