

LF Receiver Antenna CAS11D23



Description

- LF receiver antenna for X/Y axis.
- Covered by over-molding.
- Low profile.
- L × W × H : 11.6 × 3.5 × 2.4 mm Max.
- RoHS compliance.

Environmental Data

- Operating temperature range: -40°C~+125°C
- Storage temperature range: -40°C~+125°C

Packaging

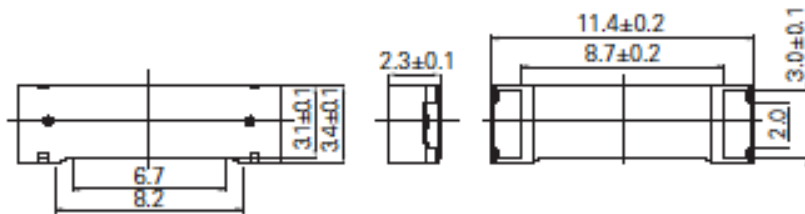
- Carrier tape and reel.
- 2,500pcs/ reel

Applications

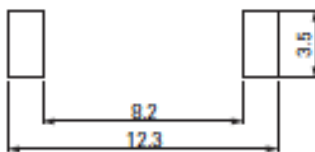
- PEPS, Smart key system.
- Security system
- TPMS



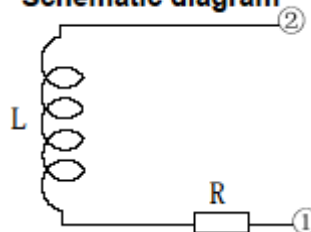
Dimension - [mm]



Suggest PCB layout - [mm]

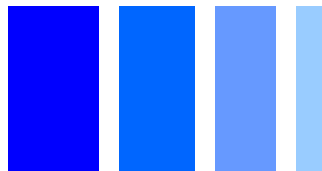


Schematic diagram



L: Ferrite core coil inductance.
R: Copper resistance.

LF Receiver Antenna CAS11D23



Electrical Characteristics

No.	Part No.	Stamp	Inductance(1-2)		Unloaded Q (Min.)	SRF Min. (kHz)	D.C.R Ref. (Ω)
			mH	Within			
01	CAS11D23-722	722	7.20	$\pm 3\%$	40	700	50
02	CAS11D23-472	472	4.70	$\pm 3\%$	40	1,000	32
03	CAS11D23-342	342	3.40	$\pm 3\%$	35	1,200	27
04	CAS11D23-232	232	2.36	$\pm 3\%$	40	1,500	16

* Measuring condition : L, Q at 125kHz, SER 1V

Please refer to the sales offices on our website - <http://www.sumida.com>

Hong Kong

Tel.+852-2880-6781
FAX.+852-2565-9600
sales@hk.sumida.com

Kanagawa (Japan)

Tel.+81-44-578-2102
FAX.+81-44-578-2105
sales@jp.sumida.com

Chicago

Tel.+1-847-545-6700
FAX. +1-847-545-6720
sales@us.sumida.com

Shanghai

Tel.+86-021-5836-3299
FAX.+86-021-5836-3266
shanghai.sales@cn.sumida.com

Seoul

Tel.+82-2-6237-0777
FAX.+82-2-6237-0778
sales@kr.sumida.com

Oberzell

Tel.+49-8591-937-0
FAX. +49-8591-937-103
contact@sumida-eu.com

Shenzhen

Tel.+86-755-8291-0228
FAX.+86-755-8291-0338
shenzhen.sales@cn.sumida.com

Singapore

Tel.+65-6296-3388
FAX.+65-6296-3390
sales@sg.sumida.com

Neumarkt

Tel.+49-9181-4509-110
FAX. +49-9181-4509-310
infocomp@eu.sumida.com

Taipei

Tel.+886-2-8751-2737
FAX.+886-2-8751-2738
sales@tw.sumida.com

San Jose

Tel.+1-408-321-9660
FAX.+1-408-321-9308
sales@us.sumida.com