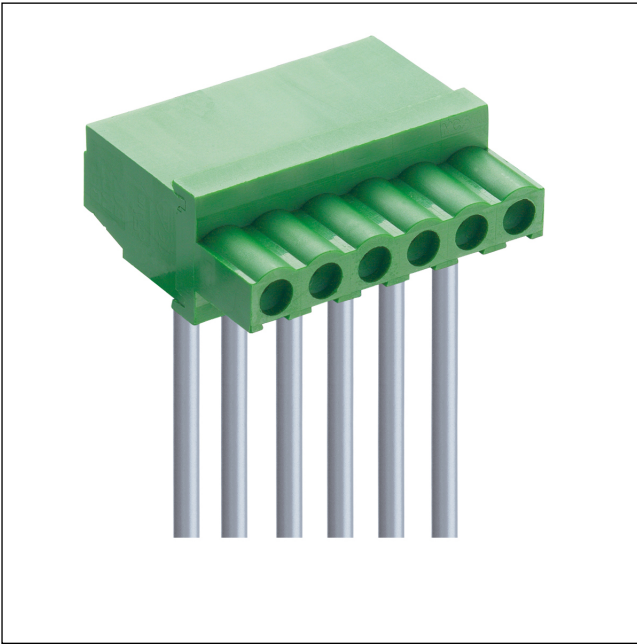


67 MC 200-508

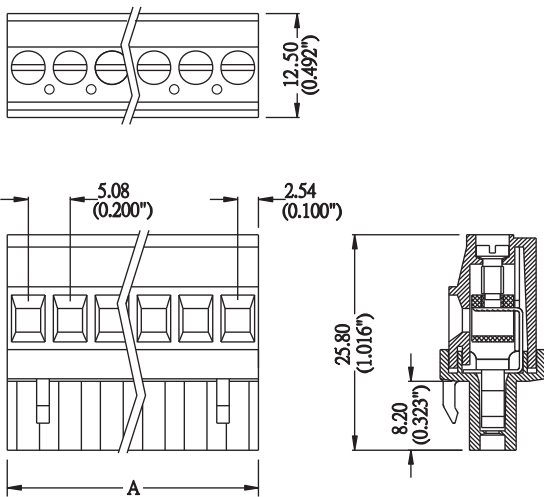
Pluggable terminal blocks on pin headers, pitch 5.08 mm



Pluggable screw terminal block, with lift clamp, without protection against misplacing, with locking, cable departure 90° to plugging direction on side of locking, stringable without loss of pitch

Approvals:  

67 MC 200-508



Environmental conditions

Temperature range -40 °C/+105 °C

Materials

Insulating body	PA, V-0 according to UL94
Contact spring	CuSn, tin-plated
Clamp	CuZn, nickel-plated
Screw	steel, zinc-plated

Mechanical data

Screw size	M2,6
Tightening torque screw	0,5 Nm

Connectable conductors for screw clamp

Section	AWG 24-14 (0,25-2,5 mm ²)
Stripping length	4-5 mm

Electrical data (at T_{amb} 20 °C)

Rated current	16 A
Rated voltage	300 V AC
Rated impulse voltage	≥ 2 kV
Insulation resistance	> 5 GΩ

Associated products

Counterparts
 ☞ ME 010-508 ☞ ME 020-508 ☞ ME 030-508
 ☞ ME 040-508

67 MC 200-508

Designation	Pole Number	PU (Pieces)	MDQ (Pieces)	Dimensions A (mm)
MC 200-508 02	2	500	600	10.16
MC 200-508 03	3	300	600	15.24
MC 200-508 04	4	200	600	20.32
MC 200-508 06	6	150	600	30.48
MC 200-508 08	8	100	600	40.64

Packaging:

in bulk, in a plastic bag