

PLEASE CHECK WWW.MOLEX.COM FOR LATEST PART INFORMATION

Part Number: [0191640008](#)
Status: **Active**
Description: Perma-Seal™ Spade Tongue Terminal for 18-22 AWG Wire, Stud Size 10

Agency Certification

CSA LR18689
 UL E32244

General

Product Family Ring and Spade Terminals
 Series [19164](#)
 Crimp Quality Equipment Yes
 Mil-Spec N/A
 MolexKits Yes
 Product Name Perma-Seal™
 Type Spade

Physical

Barrel Type Closed
 Flammability 94V-2
 Insulation NiAc™
 Material - Plating Mating Tin
 Packaging Type Bag
 Plating min: Mating (µin) 100
 Plating min: Mating (µm) 2.5
 Plating min: Termination (µin) 100
 Plating min: Termination (µm) 2.5
 Stud Size 10 (M5)
 Wire Insulation Diameter 5.97mm (.235")
 Wire Size AWG 18, 20, 22
 Wire Size mm² 0.38 - 0.96

Material Info

Old Part Number SA-235-10

Reference - Drawing Numbers

Sales Drawing SD-19164-025

EU RoHS

**ELV and RoHS
Compliant**

REACH SVHC

Not Reviewed

Halogen-Free

Status

Not Reviewed

China RoHS



**Need more information on product
environmental compliance?**

Email productcompliance@molex.com
 For a multiple part number RoHS Certificate of
 Compliance, [click here](#)

Please visit the [Contact Us](#) section for any
 non-product compliance questions.

Search Parts in this Series

[19164Series](#)

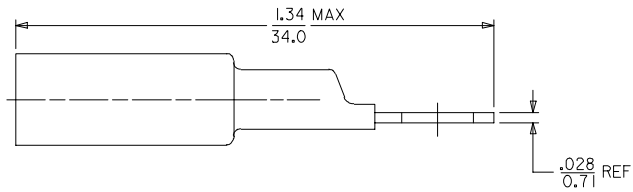
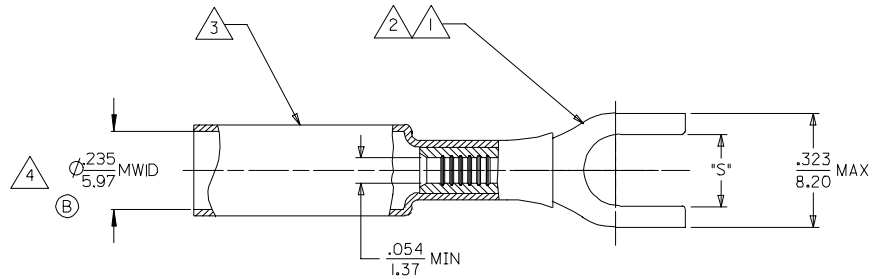
Application Tooling | FAQ

*Tooling specifications and manuals are
found by selecting the products below.
Crimp Height Specifications are then
contained in the Application Tooling
Specification document.*

Global

Description	Product #
Power Crimp Tool Head for Prema- Seal™ Terminals 10-22 AWG	0640057400
Hand Crimp Tool, UL Approved	0640017400

MATERIAL NUMBER	ENGINEERING NUMBER	STUD SIZE	SLOT 'S' ±0.10 ±0.25
191640006	SA-235-06	#6	Ø.146/3.71
191640007	SA-235-08	#8	Ø.173/4.39
191640008	SA-235-10	#10	Ø.198/5.03



NOTES:

- 1. TERMINAL MATERIAL: COPPER ALLOY
- 2. FINISH: ELECTRO TIN PLATE.
- 3. INSULATION MATERIAL: HEAT SHRINKABLE TUBING WITH HOTMELT ADHESIVE INNER LINER. COLOR: RED.
- 4. MWID = MAXIMUM WIRE INSULATION DIAMETER.

SALES DRAWING

CHANGED MWID EC NO: ETC2006-0154 DRAWN BY: ASAYDEH CHKD: JLOMASTRO APPR: IPAWLICK	2005/12/21 2005/12/21 2005/12/21	DESCRIPTION REVISIONS 1 2 3 4	QUALITY SYMBOLS		GENERAL TOLERANCES (UNLESS SPECIFIED) mm INCH 4 PLACES ± --- ± --- 3 PLACES ± --- ± --- 2 PLACES ± --- ± --- 1 PLACE ± --- ± --- ANGULAR ± --- °	DIMENSION STYLE		SCALE ---	DESIGN UNITS INCH	THIRD ANGLE PROJECTION
			DRAWN BY: ASAYDEH DATE: 05/12/13 CHECKED BY: JLOMASTRO DATE: 05/12/13 APPROVED BY: RDEROSS DATE: 05/12/13			MATERIAL NO. SD-19164-025 DOCUMENT NO. SD-19164-025 SHEET NO. 1 OF 1				
DRAFT WHERE APPLICABLE MUST REMAIN WITHIN DIMENSIONS						SEE CHART		MOLEX INCORPORATED		