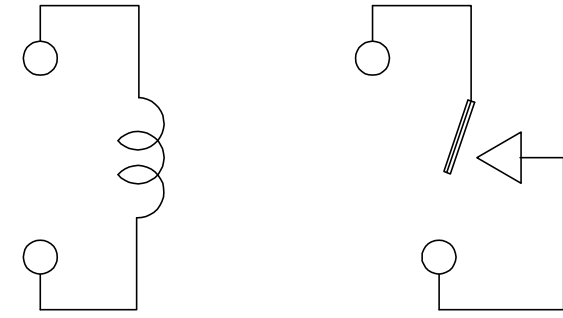
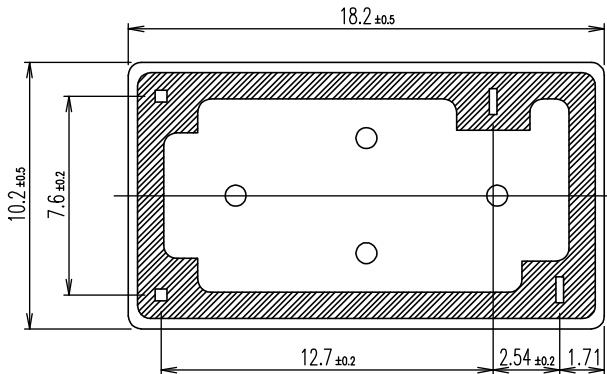
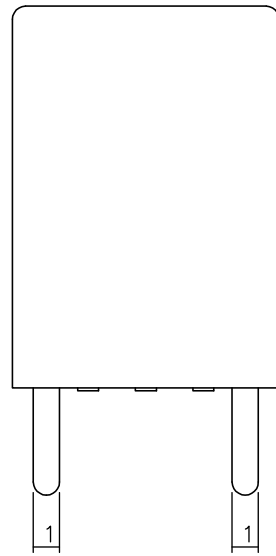
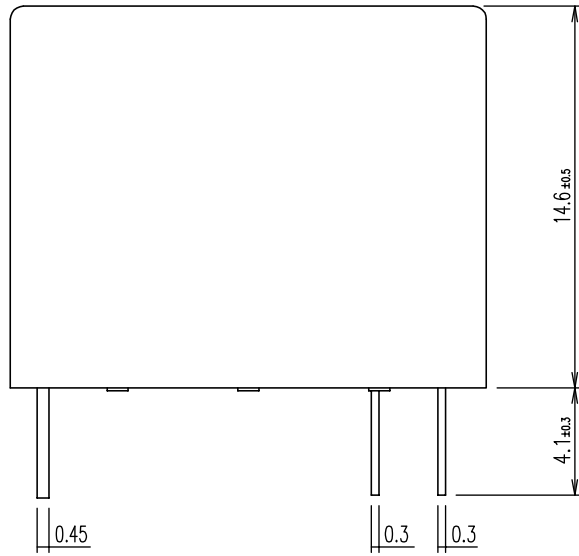
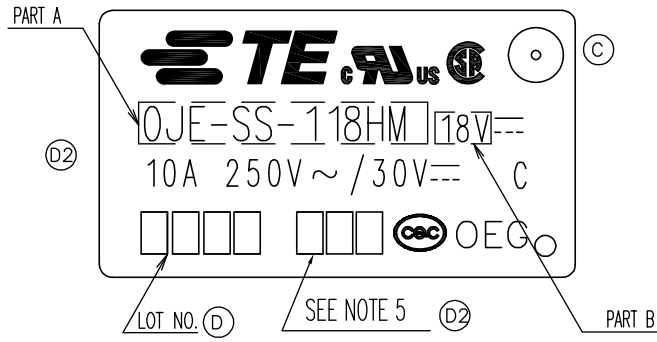


THIS DRAWING IS UNPUBLISHED. RELEASED FOR PUBLICATION  
 © COPYRIGHT - By - TE CONNECTIVITY ALL RIGHTS RESERVED.

LOC	DIST	REVISIONS				
P	LTR	DESCRIPTION	DATE	DWN	APVD	
HB	-	D2	CHANGE LOGO&ADD LINE IDENTIFICATION ECO-12-001771	21Aug2012	YS.H	BH.Y



CONNECTION FIGURE

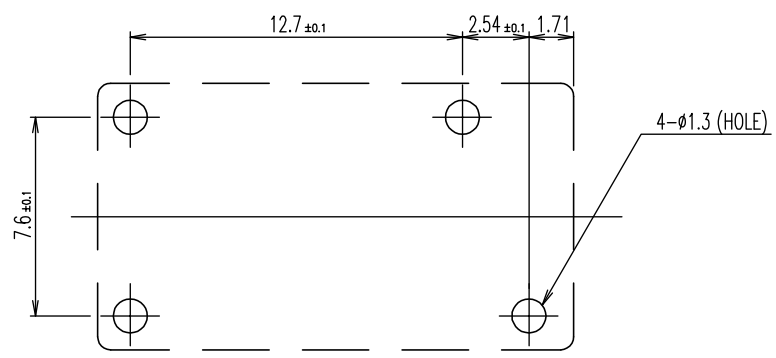


FIGURE FOR PRINTED CIRCUIT BOARD PROCESSING (BOTTOM VIEW)

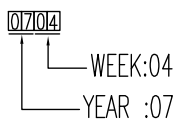
THIS DRAWING IS A CONTROLLED DOCUMENT.		DWN	H.Sasaki		TE Connectivity
DIMENSIONS: mm		CHK	Y.Oikawa		
TOLERANCES UNLESS OTHERWISE SPECIFIED:		APVD	A.Nagai		
0 PLC ± - 1 PLC ± - 2 PLC ± - 3 PLC ± - 4 PLC ± - ANGLES ± -		PRODUCT SPEC	NAME		
MATERIAL	FINISH	APPLICATION SPEC	OJE-SS-HM SPEC,000 CUSTOMER DRAWING		RESTRICTED TO
-	-	WEIGHT	SIZE	CAGE CODE	DRAWING NO
-	-	-	A3	00779	G= 1461103
CUSTOMER DRAWING			SCALE	SHEET	REV
-			5:1	1 of 2	D2

THIS DRAWING IS UNPUBLISHED. RELEASED FOR PUBLICATION  
 © COPYRIGHT - By - TE CONNECTIVITY ALL RIGHTS RESERVED.

LOC	DIST	REVISIONS					
HB	-	P	LTR	DESCRIPTION	DATE	DWN	APVD
		-		SEE SHEET 1	-	-	-

ACTIVE	1461103-3	OJE-SS-148HM, 000	48V	OJE-SS-148HM	h
ACTIVE	6-1419128-4	OJE-SS-124HM, 000	24V	OJE-SS-124HM	g
ⓐ ⓑ OBSOLETE	1461103-2	OJE-SS-118HM, 000	18V	OJE-SS-118HM	f
ACTIVE	4-1419128-3	OJE-SS-112HM, 000	12V	OJE-SS-112HM	e
ACTIVE	3-1419128-5	OJE-SS-109HM, 000	9V	OJE-SS-109HM	d
ACTIVE	3-1419128-2	OJE-SS-106HM, 000	6V	OJE-SS-106HM	c
ACTIVE	2-1419128-9	OJE-SS-105HM, 000	5V	OJE-SS-105HM	b
ACTIVE	1461103-1	OJE-SS-103HM, 000	3V	OJE-SS-103HM	a
PART STATUS	PART NO	DESCRIPTION	PART B	PART A	TYPE

ⓐ ⓑ NOTES:  
 1. LOT NO. SYSTEM AS FOLLOWING:



ⓐ 2. TERMINAL DIMENSION IS BEFORE SOLDER DIP;

ⓐ 3. FOR THE TIN-PLATING OF THE PINS:  
 +0.1mm FOR WIDTH, THICKNESS AND DIAMETER.  
 +0.5mm FOR LENGTH.

ⓐ 4. MARKING FROM INK TO LASER.

ⓐ 5. ADD LOT NO. SYSTEM AS FOLLOWING;



I, DIGITS FOR DAY OF THE WEEK  
 1...MONDAY IN THIS WEEK;  
 2...TUESDAY IN THIS WEEK;  
 .....  
 7...SUNDAY IN THIS WEEK  
 II, DIGITS FOR SHIFT OF THE DAY  
 1...DAY SHIFT IN THIS DAY;  
 2...NIGHT SHIFT IN THIS DAY;  
 III, ONE CHARACTER DISTINGUISH THE LINE  
 IDENTITY,  
 SUCH AS: A,B,....Z

		EPOXY RESIN	SEAL (BASE & BOBBIN)	15
		3UEW	MAGNETIC WIRE	14
94V-0		P.B.T	CASE	13
94V-0		P.B.T	BASE	12
94V-0		P.B.T	BOBBIN	11
	SOLDER DIP	C.P WIRE	COIL TERMINAL	10
94V-0			CARD	9
		Ag ALLOY	MOVABLE CONTACT	8
		Ag	NO.CONTACT	7
		STEEL	HINGE SPRING	6
	SOLDER DIP	PBP	NO.TERMINAL	5
	SOLDER DIP	Cu ALLOY	MOVABLE SPRING	4
	NIP	STEEL	CORE	3
	NIP	STEEL	ARMATURE	2
	NIP	STEEL	YOKE	1
INCOMBUSTIBILITY	TREATMENT	MATERIAL	DESCRIPTION	ITEM

THIS DRAWING IS A CONTROLLED DOCUMENT.		DWN	H,Sasaki	-	
DIMENSIONS: mm		CHK	Y.Oikawa	-	
TOLERANCES UNLESS OTHERWISE SPECIFIED:		APVD	A.Nagai	-	
	0 PLC	± -	PRODUCT SPEC	-	
	1 PLC	± -	APPLICATION SPEC	-	
	2 PLC	± -	WEIGHT	-	
	3 PLC	± -	CUSTOMER DRAWING	-	
4 PLC	± -	SIZE	A3	00779	
4 PLC ANGLES	± -	CAGE CODE	G=	1461103	
MATERIAL	FINISH	DRAWING NO	RESTRICTED TO	-	
-	-	SCALE	5:1	SHEET	2 of 2
		REV	D2		



OJE-SS-HM SPEC,000 CUSTOMER DRAWING