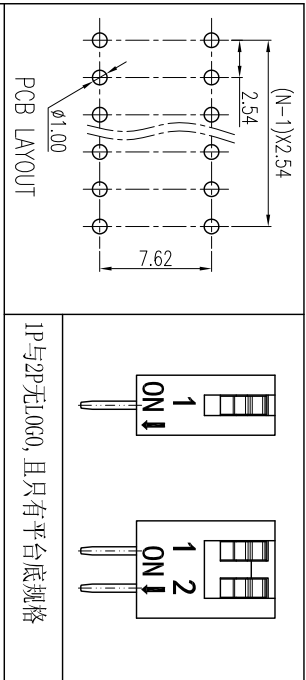
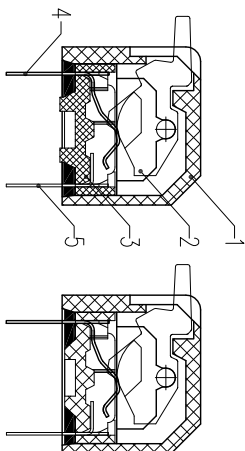
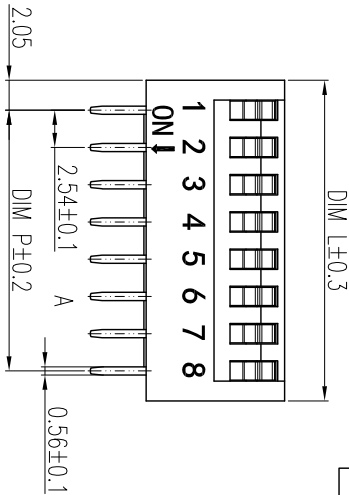
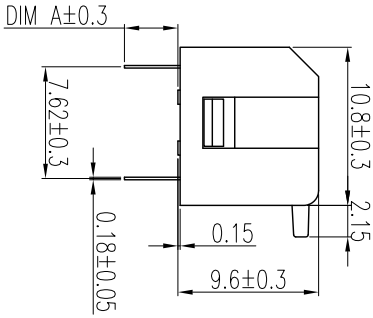
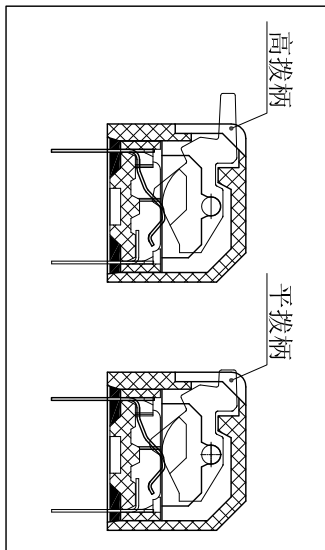
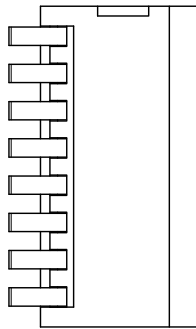


REV	ECN	CONTENT	CHECK	DATE
V0.0		初版发行	LJ	2019.01.13
V1.0		整理图纸	WL	2020.06.03



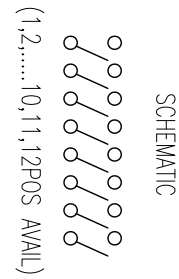
DIM A	长针
凸台底座	3.65
平台底座	3.80



- 技术要求:
- 额定电流: 25mA, 24VDC (开与关切换时) 100mA, 50VDC (开与关不切换时)
 - 接触阻抗: $\leq 50m\Omega$ (初始), $\leq 100m\Omega$ (寿命测试后)
 - 绝缘电阻: $\geq 100M\Omega / 500 VDC$
 - 耐电压: 500VAC/1minute
 - 拨动力: 1000g max
 - 机械寿命: ≥ 2000 cycles
 - 使用温度: $-40^\circ C \sim +85^\circ C$
 - 存储温度: $-40^\circ C \sim +85^\circ C$
 - 符合RoHS要求

焊接说明:
 手工焊接: 30W电烙铁, $320 \pm 5^\circ C$, 3S max
 波峰焊接: $250 \pm 10^\circ C$, 5S max
 焊接前保持开关在“OFF”状态

HOW TO ORDER
 KF1002-XXP-XX X X X-XXX-XXX
 产品型号 P 数 触点 R3: 磁石 B0: 磁体 G: 凸台底 F: 平台底 L: 平底座 L: 漆脚



General tolerance in mm

radii and chamfers

shorter angle side

≡

//

over 0	over 3	over 6	over 30	over 120	over 400	over 400	over 0.5	over 3	over 6	over 10	over 50	over 100	over 100	over 150
to 3	to 6	to 30	to 120	to 400	to 1000	to 1000	to 3	to 6	to 10	to 50	to 120	to 150	to 150	to 150
±0.15	±0.2	±0.25	±0.3	±0.5	±0.8	±0.8	±0.2	±0.5	±1.0	±1°	±30'	±20'	0.5	0.3

POLES	DIM P	DIM L
1	/	4.11
2	2.54	6.65
3	5.08	9.19
4	7.62	11.73
5	10.16	14.27
6	12.70	16.81
7	15.24	19.35
8	17.78	21.89
9	20.32	24.43
10	22.86	26.97
11	25.40	29.51
12	27.94	32.05

5	PIN2	/	P	铜合金	镀金
4	PIN1	/	P	铜合金	镀金
3	底座	/	1	工程塑料	UL94V-0
2	拔柄	/	P	工程塑料	UL94V-0
1	外壳	/	1	工程塑料	UL94V-0

APP.	DATE	2020.6.3	NAME	KF1002-XXP-XXXXLX-0N-XXX
CHK.	DATE	2020.6.3	DWGNO.	W20004301
UN	DATE	2020.6.3	SHEET	1/1
DES	DATE	2020.6.3	PROJECTION-METHOD	☉

