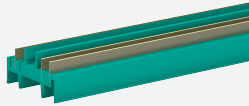


Insert for DIN Mounting Rail

UPR-INS-03



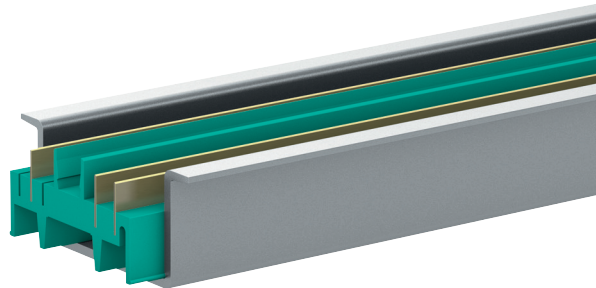
- 3-conductor insert in 35 mm DIN mounting rail
- Suitable for 35 mm DIN mounting rail UPR-MR
- Suitable for profile rail K-DUCT
- Standard length 2 m (6 foot), simple to customize to application space

Insert for 35 mm DIN mounting rail

Function

The insert consists of plastic and has integrated gold-plated conductors. The insert is installed into the DIN mounting rail UPR-MR. The component has two conductors for power and one conductor for collective error messaging. The component comes in 2 m segments but can be cut to any size. The DIN mounting rail UPR-MR and the insert UPR-INS-** form the Power Rail.

Assembly



Release date: 2020-09-23 Date of issue: 2020-09-23 Filename: 258157_eng.pdf

Refer to "General Notes Relating to Pepperl+Fuchs Product Information".

Pepperl+Fuchs Group
www.pepperl-fuchs.com

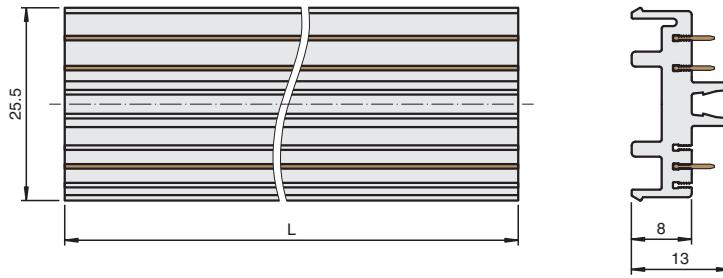
USA: +1 330 486 0002
pa-info@us.pepperl-fuchs.com

Germany: +49 621 776 2222
pa-info@de.pepperl-fuchs.com

Singapore: +65 6779 9091
pa-info@sg.pepperl-fuchs.com

 **PEPPERL+FUCHS**

Dimensions



Technical Data

Mechanical specifications

Connection	3 conductors
Supply	2 Conductors
Fault output	1 Conductors
Material	Polycarbonate
Mass	approx. 440 g
Dimensions	13 x 25.5 x 2000 mm (0.5 x 1 x 78.7 inch)
Mounting	in 35 mm DIN mounting rail acc. to EN 60715:2001 Height: 15 mm

Accessories

Designation	- DIN mounting rail UPR-MR - end cap UPR-E - cover UPR-COVER
-------------	--

Release date: 2020-09-23 Date of issue: 2020-09-23 Filename: 258157_eng.pdf