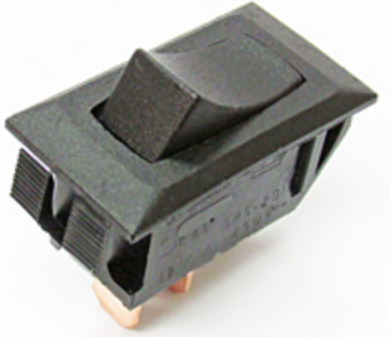




**CW INDUSTRIES**130 James Way  
Southampton, PA 18966

Phone: 215-355-7080 • Fax: 215-355-1088

Email: [info@cwind.com](mailto:info@cwind.com) • Website: <http://www.cwind.com>**Item # GRS-2011C-2001, 2000 Series Momentary Full Size Rocker Switches**
[Check Distributor Stock](#) · [Specifications](#) · [Materials](#) · [Operating Standards](#)
**Check Distributor Stock**

|                         |                          |
|-------------------------|--------------------------|
| Check Distributor Stock | <a href="#">DIGI-KEY</a> |
|-------------------------|--------------------------|

**Specifications**

|  |  |
|--|--|
| <b>Circuitry</b>   | SPST - Momentary Normally Closed   |
| <b>Switch Function</b>   | ON-(OFF)   |
| <b>Electrical Ratings<sup>1</sup></b>  | 4 A @ 250 VAC<br>8 A @ 125 VAC   |
| <b>Temperature Rating</b>  | +65 Max. Degrees C   |
| <b>Panel Opening</b>   | 0.550 X 1.125 in<br>13.97 X 28.58 mm   |
| <b>Acceptable Panel Thickness</b>  | 0.025 - 0.180 in<br>0.64 - 4.57 mm   |
| <b>Mounting</b>  | No hardware or tools needed; self locks into one of the two available panel opening options.<br><br>Specify - GRSX-2000 Series - 2000 for 0.550 X 1.125 in. panel opening.<br>Specify - GRSX-2000 Series - 3000 for 0.480 X 1.072 in. panel opening.<br><br><b>CAUTION:</b> Burr direction must be away from the direction of insertion. |
| <b>Mounting Polarization</b>   | No   |
| <b>Actuator Color</b>  | Black  |
| <b>Actuator Legend</b>   | None   |
| <b>Illumination</b>  | Non Illuminated  |
| <b>Housing Color</b>   | Black  |
| <b>Insulating Barriers</b>   | ( <input type="checkbox"/> ) Between Terminals ( <input checked="" type="checkbox"/> ) <b>No Barriers</b>  |
| <b>Terminals</b>   | ( <input checked="" type="checkbox"/> ) 0.250 x 0.032in. 6.35 x 0.81mm. Quick Connect<br>( <input type="checkbox"/> ) 0.187 x 0.032in. 4.75 x 0.81mm. Quick Connect  |
| <b>Listing Agency<br/>(Consult drawing or factory for specific rating)<sup>2</sup></b> | <br>Listed Agencies   |
| <b>Compliance</b>  |   |

<sup>1</sup> Additional ratings may be available, contact us for more information.

<sup>2</sup> Due to ongoing advancements, additional agency certifications may be available, contact us for more information.

---

## Materials

|  |              |
|--|--------------|
| <b>Rocker Knob</b>                     | Nylon 94V-2  |
| <b>Housing</b>                         | Nylon 94V-2  |
| <b>Terminals &amp; Moving Contacts</b> | Copper Alloy |

---

## Operating Standards

### Endurance:

100,000 cycles, no load, minimum

25,000 cycles at rated load minimum

### Contact Resistance:

Less than 0.01  $\Omega$  at 10 mA

### Operating Temperature:

From -20°C to 105°C maximum.

Consult factory for higher or lower temperature ranges.

### High Voltage Dielectric Withstanding Voltage:

2,500 V, 60 Hz for 1 minute between mounting surface and circuit connections (min.)

### Relative Humidity:

Insulation resistance > 10<sup>3</sup> M $\Omega$  after 100 hours at 95% R.H. and 50°C followed by 1 hour dry at ambient room conditions

**Operating Standards** described herein are general specifications that vary depending on the switch construction specified and end application. Contact us for specifications for specific models. Specifications subject to change without notice.