

# KR Electronics, Inc.

## General Description

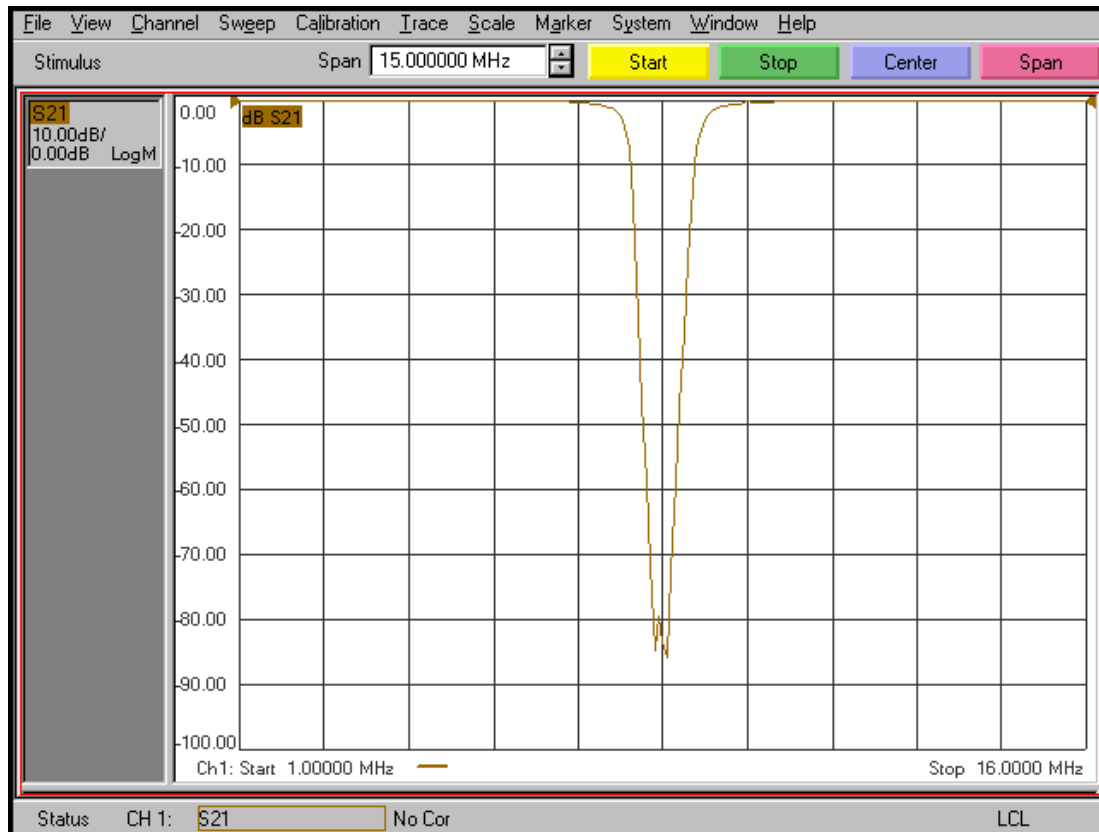
KR Electronics part number 3203-8.5 is a 8.5 MHz Bidirectional Absorptive Notch filter. The filter has a 1.25 dB bandwidth of 3 MHz max. Other notch frequencies and are bandwidths available. Please consult the factory.

### Features

- 8.5 MHz Bidirectional Absorptive Notch
- Low VSWR even in Notch
- High Notch Rejection
- 50  $\Omega$  Source and Load
- SMA Connectors

## Typical Performance

Overall Response  
(10 dB/div)

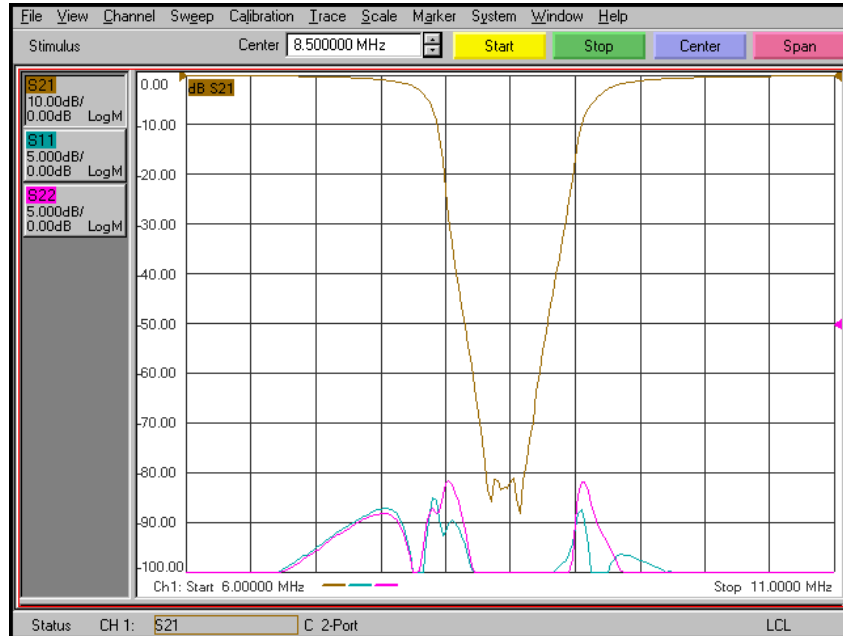


KR Electronics, Inc.  
91 Avenel Street  
Avenel, NJ 07001

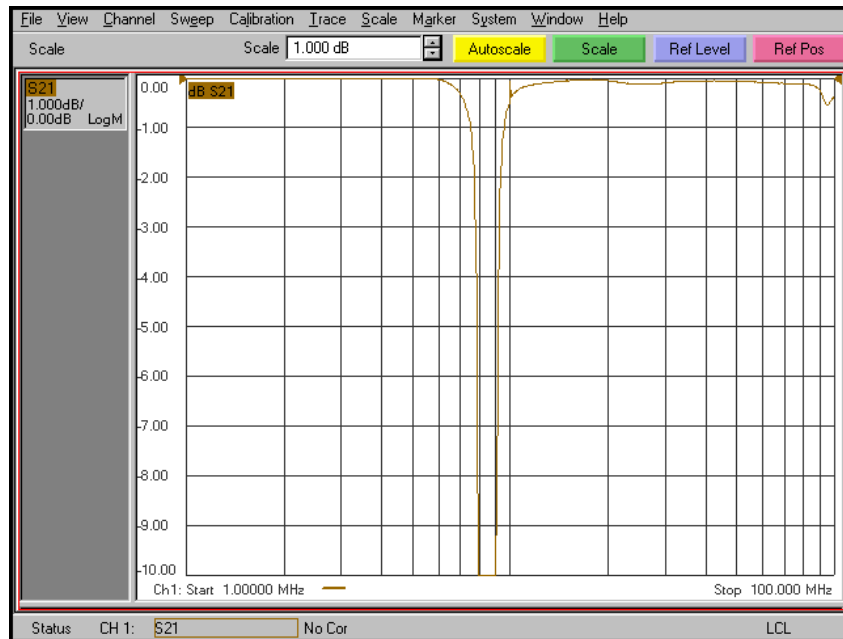
Web [www.krfilters.com](http://www.krfilters.com)  
Email [sales@krfilters.com](mailto:sales@krfilters.com)  
Phone (732) 636-2500  
Fax (732) 636-2582

## Typical Performance

### Response & Return Loss (10 dB/div & 5 dB/div)



### Overall Response (1 dB/div)



KR Electronics, Inc.  
91 Avenel Street  
Avenel, NJ 07001

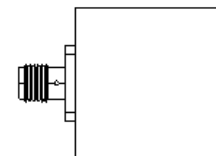
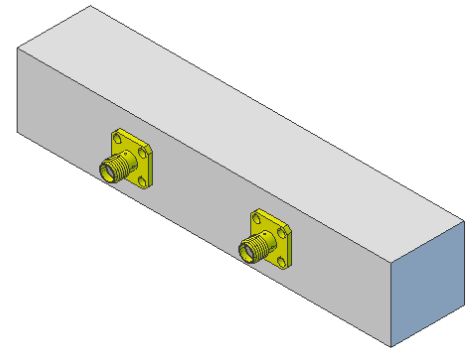
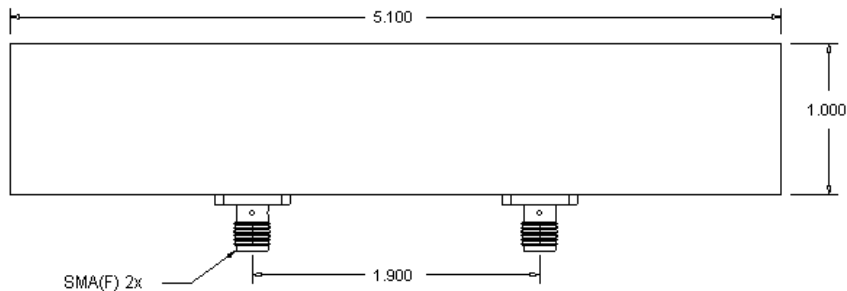
Web [www.krfilters.com](http://www.krfilters.com)  
Email [sales@krfilters.com](mailto:sales@krfilters.com)  
Phone (732) 636-2500  
Fax (732) 636-2582

# KR Electronics 3203-8.5

## Specifications

| Parameter                              | Specification                  | Notes            |
|--|--------------------------------|------------------|
| Filter type                            | Bidirectional Absorptive Notch |                  |
| Notch Frequency                        | 8.5 MHz                        |                  |
| Insertion Loss at 7 MHz & 10 MHz       | 1.25 dB max                    | < 0.6 dB typical |
| Insertion Loss at 8.35 to 8.65 MHz     | 45 dB min                      | > 70 dB typical  |
| Input & Output Return Loss 7 to 10.MHz | 12 dB min                      | 20 dB typical    |
| 3 dB Bandwidth                         | 1.45 MHz typical               |                  |
| 45 dB Bandwidth                        | 700 KHz typical                |                  |
| Source and Load                        | 50 $\Omega$                    |                  |

## Physical Dimensions



**Notes:**

1. Dimensions in inches
2. Rectangular case

KR Electronics, Inc.  
91 Avenel Street  
Avenel, NJ 07001

Web [www.krfilters.com](http://www.krfilters.com)  
Email [sales@krfilters.com](mailto:sales@krfilters.com)  
Phone (732) 636-2500  
Fax (732) 636-2582