

# Coaxial High Pass Filter

## SHP-250+

50Ω 225 to 3000 MHz

### Maximum Ratings

Operating Temperature	-55°C to 100°C
Storage Temperature	-55°C to 100°C
RF Power Input	0.5W max.

### Features

- rugged shielded case
- other standard and custom SHP models available with wide selection of fco

### Applications

- lab use
- transmitters/receivers
- radio communications



CASE STYLE: FF99

Connectors	Model	Price	Qty.
SMA	SHP-250+	\$38.95 ea.	(1-9)

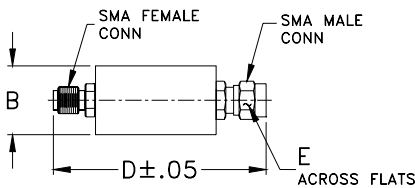
**+ RoHS compliant in accordance with EU Directive (2002/95/EC)**

The +Suffix has been added in order to identify RoHS Compliance. See our web site for RoHS Compliance methodologies and qualifications.

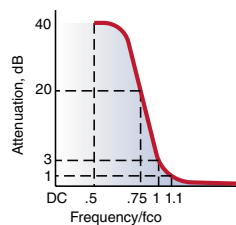
### High Pass Filter Electrical Specifications

STOPBAND (MHz)		fco (MHz) Nom.	PASSBAND (MHz)	VSWR (:1)	
(loss > 40 dB)	(loss > 20 dB)	(loss 3 dB)	(loss < 1 dB)	Stopband Typ.	Passband Typ.
DC-100	100-150	205	225-3000	17	1.3

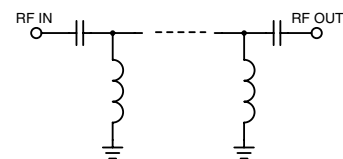
### Outline Drawing



### typical frequency response



### electrical schematic

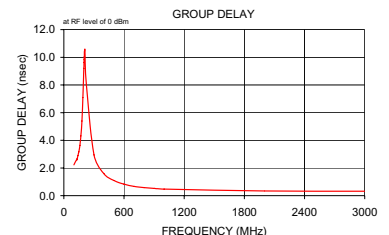
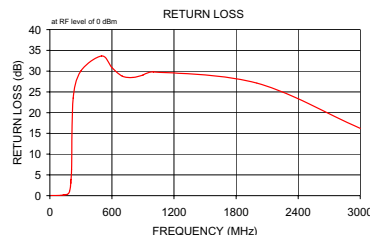
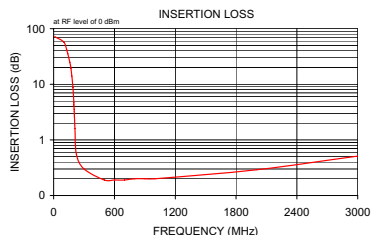


### Outline Dimensions (inch/mm)

B	D	E	wt
.67	1.98	.312	grams
17.02	50.29	7.92	42.0

### Typical Performance Data

Frequency (MHz)	Insertion Loss (dB)		Return Loss (dB)	Frequency (MHz)	Group Delay (nsec)
	$\bar{x}$	$\sigma$			
10.00	72.15	5.67	0.03	100.00	2.23
100.00	57.26	0.27	0.08	129.00	2.63
129.00	41.25	0.45	0.17	130.00	2.59
130.00	40.71	0.46	0.18	140.00	2.90
140.00	35.39	0.54	0.20	150.00	3.17
150.00	30.09	0.62	0.22	160.00	3.63
160.00	24.78	0.73	0.26	166.00	4.00
166.00	21.57	0.80	0.29	170.00	4.32
170.00	19.43	0.85	0.34	180.00	5.39
180.00	14.04	0.97	0.53	190.00	7.09
190.00	8.77	1.03	1.02	199.00	9.19
199.00	4.65	0.89	2.21	200.00	9.41
200.00	4.26	0.86	2.43	201.00	9.63
201.00	3.90	0.83	2.67	202.00	9.83
202.00	3.56	0.79	2.93	203.00	10.02
203.00	3.24	0.75	3.23	204.00	10.18
204.00	2.94	0.70	3.56	205.00	10.32
205.00	2.66	0.66	3.91	206.00	10.43
206.00	2.41	0.61	4.31	210.00	10.58
210.00	1.60	0.42	6.27	225.00	8.03
225.00	0.55	0.03	23.49	300.00	2.94
300.00	0.30	0.02	30.05	400.00	1.59
500.00	0.19	0.00	33.64	500.00	1.09
600.00	0.19	0.00	30.85	600.00	0.83
700.00	0.19	0.01	28.81	700.00	0.67
800.00	0.20	0.01	28.48	800.00	0.58
900.00	0.20	0.01	29.04	900.00	0.52
1000.00	0.20	0.00	29.79	1000.00	0.47
2000.00	0.29	0.00	27.11	2000.00	0.34
3000.00	0.51	0.02	16.22	3000.00	0.32



**Mini-Circuits®**  
ISO 9001 ISO 14001 CERTIFIED

ALL NEW  
minicircuits.com

P.O. Box 350166, Brooklyn, New York 11235-0003 (718) 934-4500 Fax (718) 332-4661 For detailed performance specs & shopping online see Mini-Circuits web site



The Design Engineers Search Engine Provides ACTUAL Data Instantly From MINI-CIRCUITS At: [www.minicircuits.com](http://www.minicircuits.com)

RF/IF MICROWAVE COMPONENTS

REV. C  
M113397  
SHP-250+  
080213