

1 2 3 4 5 6 7

A

A xx-LC-TT

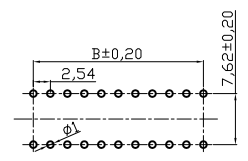
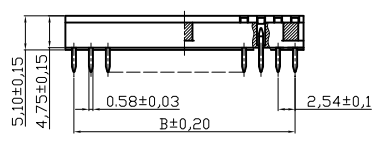
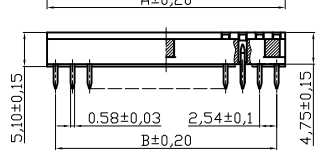
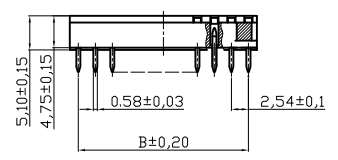
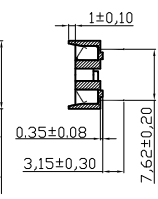
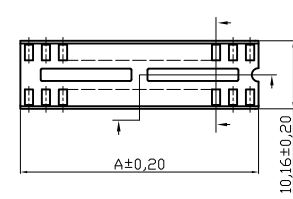
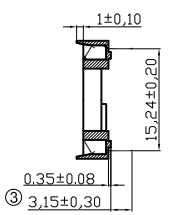
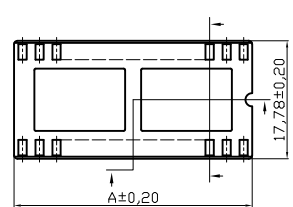
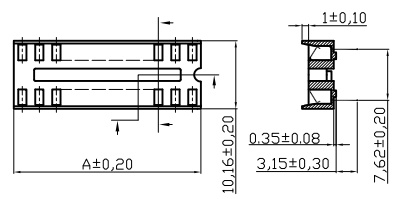
A xx-LC/7-T

A

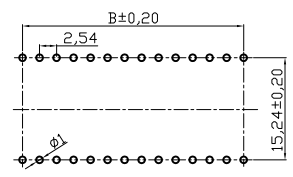
CKT: 06, 08, 14, 16,18,20

CKT: 24,28,32,40

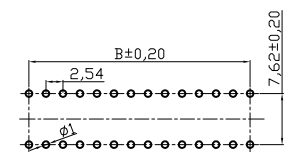
CKT: 24, 28



PCB LAYOUT



PCB LAYOUT



PCB LAYOUT

MATERIAL:  
 Contact :  
 Phosphor Bronze thickness 0.15mm  
 Plating :  
 Contact Plating, Tin plated 60u"~80u"  
 (Lead free plating)  
 Insulator : PBT-4830 , UL 94V-0

SPECIFICATIONS:  
 Current Rating : 1A  
 Dielectric withstanding Voltage : 1000v RMS/minute  
 Insulator resistance : 5000 Megohms min.  
 Contact resistance : 20 milliohms initial  
 30 milliohms after test.  
 Operating temperatures : -55°c to 85°c  
 Insertion force : 340g(12 oz) max.per contact.  
 Withdrawal force : 80g(2.82 oz) min.per contact

C

C

D

D

E

E

CKT	A±0.20	B±0.20
06	7.62	5.08
08	10.16	7.62
14	17.78	15.24
16	20.32	17.78
18	22.86	20.32
20	25.40	22.86

CKT	A±0.20	B±0.20
24	30.48	27.94
28	35.56	33.02
32	40.64	38.10
40	50.80	48.26

CKT	A±0.20	B±0.20
24	30.48	27.94
28	35.56	33.02

F

F

G

RoHS compliant

G

H

H

Scale	1:1						Date	Name	Customer-No.
TOLERANCE							Drawn	24.03.1999	Hellwig
X.	±X						Approved	05.11.2009	Hellwig
X.X	±X								
X.XX	±X	③	Correct dimensions	05.11.2009	Dean				
DIM	TOL	②	Update	21.07.2009	Dean				Drawing-No.
X.°	±X°								
X.X°	±X°	①	Drawn	24.03.1999	Hellwig				
Angle	TOL	Id.	Modification	Date	Name				Replace ASS 0333A CO ASS 0333B CO

ASSMANN WSW-No. A xx-LC-TT  
A xx-LC/7-T

ASS 0810 CO rev03

Sheet

1 2 3 4 5 6 7