



UT40N03T

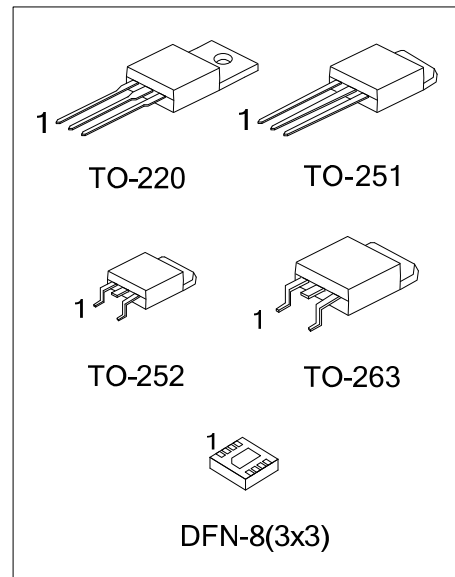
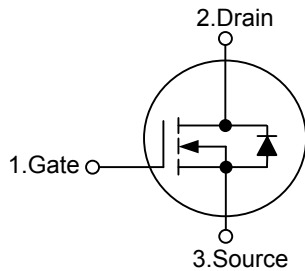
Power MOSFET

30V, 28A N-CHANNEL
ENHANCEMENT MODE
POWER MOSFET

■ FEATURES

- * $R_{DS(ON)} < 25m\Omega @ V_{GS} = 10V$
- * Low capacitance
- * Optimized gate charge
- * Fast switching capability
- * Avalanche energy specified

■ SYMBOL



■ ORDERING INFORMATION

Ordering Number		Package	Pin Assignment								Packing	
Lead Free	Halogen Free		1	2	3	4	5	6	7	8		
UT40N03TL-TA3-T	UT40N03TG-TA3-T	TO-220	G	D	S	-	-	-	-	-	-	Tube
UT40N03TL-TM3-T	UT40N03TG-TM3-T	TO-251	G	D	S	-	-	-	-	-	-	Tube
UT40N03TL-TN3-R	UT40N03TG-TN3-R	TO-252	G	D	S	-	-	-	-	-	-	Tape Reel
UT40N03TL-TQ2-R	UT40N03TG-TQ2-R	TO-263	G	D	S	-	-	-	-	-	-	Tape Reel
UT40N03TL-TQ2-T	UT40N03TG-TQ2-T	TO-263	G	D	S	-	-	-	-	-	-	Tube
-	UT40N03TG-K08-3030-R	DFN-8(3x3)	S	S	S	G	D	D	D	D	D	Tape Reel

Note: Pin Assignment: G: Gate D: Drain S: Source

<p>UT40N03TL-TN3-R</p> <p>(1)Packing Type</p> <p>(2)Package Type</p> <p>(3)Green Package</p>	<p>(1) R: Tape Reel, T: Tube</p> <p>(2) TA3: TO-220, TM3: TO-251, TN3:TO-252, TQ2: TO-263, K08-3030: DFN-8(3x3)</p> <p>(3) L: Lead Free, G: Halogen Free and Lead Free</p>
--	--

■ MARKING

TO-220 / TO-251 / TO-252 / TO-263	DFN-8(3x3)

■ ABSOLUTE MAXIMUM RATINGS

PARAMETER		SYMBOL	RATINGS	UNIT
Drain-Source Voltage		V_{DSS}	30	V
Gate-Source Voltage		V_{GSS}	± 25	V
Continuous Drain Current		I_D	28	A
Pulsed Drain Current		I_{DM}	95	A
Total Power Dissipation	TO-220/TO-263	P_D	31.25	W
	TO-251/ TO-252 DFN-8(3×3)		41	
Junction Temperature		T_J	+150	°C
Storage Temperature		T_{STG}	-55 ~ +150	°C

Note: Absolute maximum ratings are those values beyond which the device could be permanently damaged. Absolute maximum ratings are stress ratings only and functional device operation is not implied.

■ THERMAL DATA

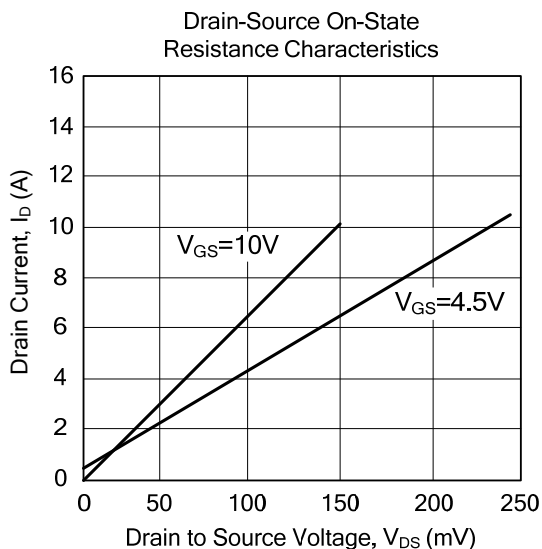
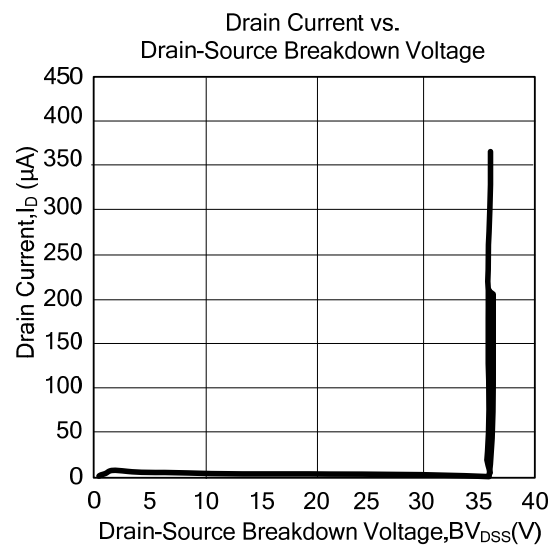
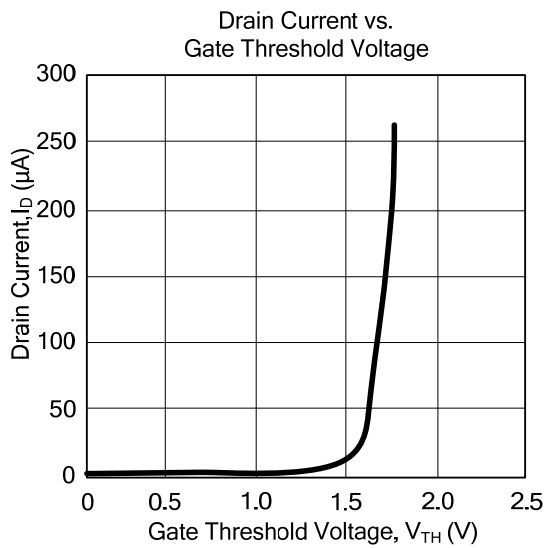
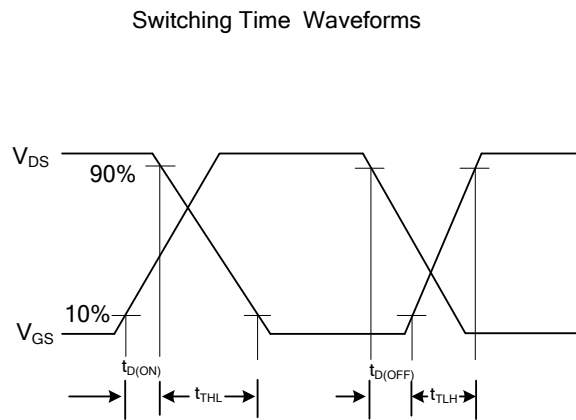
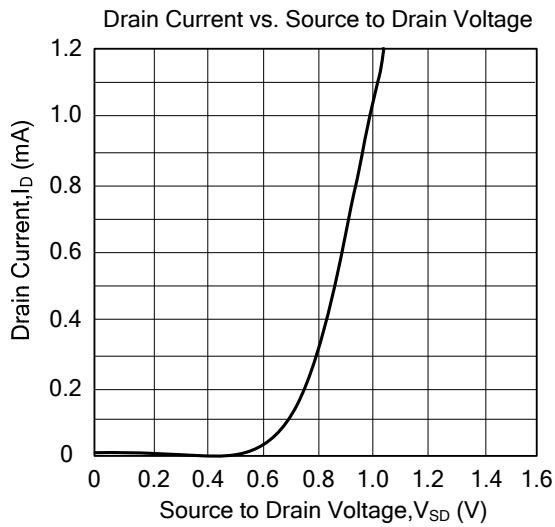
PARAMETER		SYMBOL	RATINGS	UNIT
Junction to Ambient	TO-220/TO-263	θ_{JA}	62	°C/W
	TO-251/ TO-252		60	
	DFN-8(3×3)		65	
Junction to Case	TO-220/TO-263	θ_{JC}	4	°C/W
	TO-251/ TO-252 DFN-8(3×3)		3	

■ ELECTRICAL CHARACTERISTICS (T_J =25°C, unless otherwise specified)

PARAMETER	SYMBOL	TEST CONDITIONS	MIN	TYP	MAX	UNIT
OFF CHARACTERISTICS						
Drain-Source Breakdown Voltage	BV _{DSS}	V _{GS} =0 V, I _D =250μA	30			V
Drain-Source Leakage Current	I _{DSS}	V _{DS} =30V, V _{GS} =0V, T _J =25°C			1	μA
Gate-Source Leakage Current	I _{GSS}	V _{GS} = ±25 V			±100	nA
Breakdown Voltage Temperature Coefficient	ΔBV _{DSS} /ΔT _J	Reference to 25°C, I _D =1mA		0.032		V/°C
ON CHARACTERISTICS						
Gate-Threshold Voltage	V _{GS(TH)}	V _{DS} =V _{GS} , I _D =250 μA	1		3	V
Drain-Source On-State Resistance	R _{DS(ON)}	V _{GS} =10 V, I _D =18 A			25	mΩ
		V _{GS} =4.5 V, I _D =14 A			45	
DYNAMIC PARAMETERS						
Input Capacitance	C _{ISS}	V _{DS} =25V, V _{GS} =0V, f=1.0MHz		655		pF
Output Capacitance	C _{OSS}			145		
Reverse Transfer Capacitance	C _{RSS}			95		
SWITCHING PARAMETERS						
Turn-ON Delay Time	t _{D(ON)}	V _{GS} =10V, V _{DS} =15V, R _D =0.83Ω, I _D =18 A, R _G =3.3 Ω		6		ns
Turn-ON Rise Time	t _R			62		
Turn-OFF Delay Time	t _{D(OFF)}			16		
Turn-OFF Fall-Time	t _F			4.4		
Total Gate Charge	Q _G	V _{DS} =20V, V _{GS} =4.5V, I _D =18A		8.8		nC
Gate-Source Charge	Q _{GS}			2.5		
Gate-Drain Charge	Q _{GD}			5.8		
SOURCE-DRAIN DIODE RATINGS AND CHARACTERISTICS						
Drain-Source Diode Forward Voltage	V _{SD}	I _S =28 A, V _{GS} =0V			1.3	V
Maximum Continuous Drain-Source Diode Forward Current	I _S	V _D =V _G =0V , V _S =1.3V			28	A
Maximum Pulsed Drain-Source Diode Forward Current	I _{SM}				95	A

- Notes: 1. Pulse width limited by T_{J(MAX)}.
2. Pulse width ≤ 300us, duty cycle ≤ 2%.

TYPICAL CHARACTERISTICS



UTC assumes no responsibility for equipment failures that result from using products at values that exceed, even momentarily, rated values (such as maximum ratings, operating condition ranges, or other parameters) listed in products specifications of any and all UTC products described or contained herein. UTC products are not designed for use in life support appliances, devices or systems where malfunction of these products can be reasonably expected to result in personal injury. Reproduction in whole or in part is prohibited without the prior written consent of the copyright owner. The information presented in this document does not form part of any quotation or contract, is believed to be accurate and reliable and may be changed without notice.