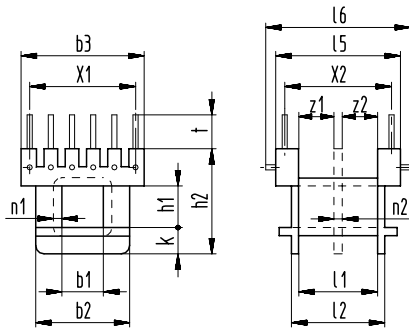


Sketch with main dimensions



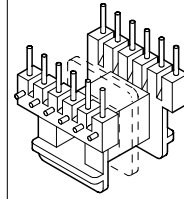
Standard: fully pinned, partial fitting on request.

t = standard pin length, alternative pin length in brackets.

The grid distances X1/X2 can be used for metric and for inch measures.

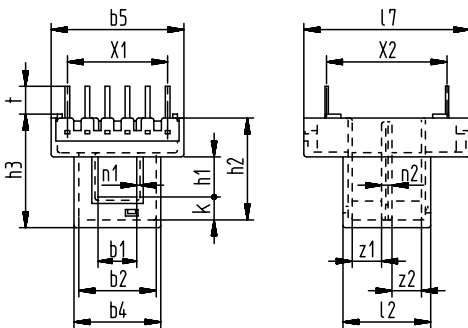
Bobbin Wz 2538 with primary margin on side of pin positions 7-12.

ST
with molded-in pins \varnothing 0,6 mm



z1 $\pm 0,2$	z2 $\pm 0,2$	b1 $\pm 0,1$	b2 $\pm 0,2$	b3 $\pm 0,2$	h1 $\pm 0,1$	h2 $\pm 0,2$	k $\pm 0,2$	l1 $\pm 0,2$	l2 $\pm 0,2$	l5 $\pm 0,3$	l6 $\pm 0,3$	n1 +0,2	n2 $\pm 0,1$	t $\pm 0,2$	X1 $\pm 0,2$	X2 $\pm 0,2$	X3 ①	Type	Art. No.	
4,1	4,1	4,9	11,1	14,6	4,9	12,4	3	9,4	11,1	14,7	16,8	0,7	1	3 (5)	5x2,5	12,5	2x6	EE 16/4,9/1 ST EE 16/4,9/2 ST	Wz 7388/1 ST Wz 7388/2 ST	2886 2901
-	-	4,9	11,1	14,6	4,9	12,4	3	7,3 9,4	11,1	14,7	16,8	1,9 0,7 1	1	3,2	5x2,5	12,5	2x6	EE 16/4,9/1 ST-WU with primary margin	Wz 2538/1 ST-WU	7103

Sketch with main dimensions



t = pin length from spacers

Bobbins with molded-in pins 0,4 x 0,6 mm.

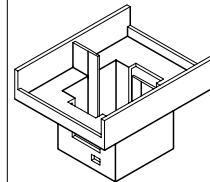
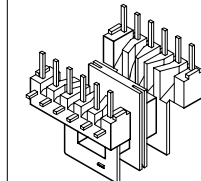
For PCB mounting and SMD technique.

Only fully fitted available.

Standard material PA 6.6 - 30 H,
for SMD versions we recommend PPS material.

ST/II-H
with shortened open cover
(for applications
in accordance with VDE 0570/EN 61558)

SMD



One set consists of: 1 bobbin
1 cover

z1 $\pm 0,2$	z2 $\pm 0,2$	b1 $\pm 0,2$	b2 $\pm 0,2$	b4 $\pm 0,2$	b5 $\pm 0,3$	h1 $\pm 0,2$	h2 $\pm 0,2$	h3 $\pm 0,3$	k $\pm 0,2$	l2 $\pm 0,2$	l7 $\pm 0,3$	n1 +0,2	n2 $\pm 0,1$	t $\pm 0,4$	X1 $\pm 0,3$	X2 $\pm 0,3$	X3 ①	Type	Art. No.	
3,7	3,7	4,9	9,8	11	16,8	4,9	12,8	14,5	2,9	11,1	21	0,5	1,3	3,5	5x2,54	15,24	2x6	EE 16/4,9/1 ST EE 16/4,9/2 ST	Wz 7741/1 ST Wz 7741/2 ST	3537 3503

① X3 = max. number of slots or terminals