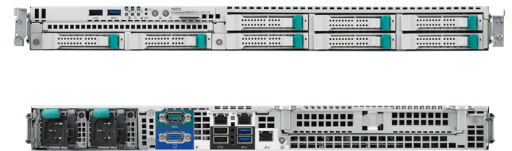
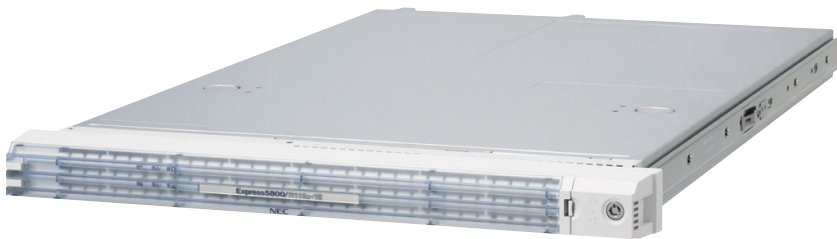


# The right-sized network infrastructure server

## NEC Express5800/R110g-1E

RELIABLE AND ENERGY EFFICIENT RACK SERVERS FOR DATA CENTERS



**HIGH PERFORMANCE**

**SUPERIOR ENERGY EFFICIENCY**

**SIMPLIFIED MANAGEABILITY**

### Flexible and Dense

The Express5800/R110g-1E, an affordable yet powerful rack server, delivers essential server features, flexibility, and enterprise-class reliability in a small footprint. In addition, the platform features a wide range of server and upgrade options for various computing needs and future business growth. The server helps to cut costs through NEC's cooling technology that enables operation in temperatures as high as 40 degrees Celsius (104 degree Fahrenheit).

### Simplicity and Reliability

The Express5800/R110g-1E, a single socket 1U rack server built on the latest Intel® Xeon® E3-1200 v3 processors, is designed for front-office applications, for the corporate data center, and for cloud infrastructure. The R110g-1E supports various components as well as the NEC EXPERSSCOPE Engine which provides extensive management features. The R110g-1E is suitable for dedicated/single IT applications, file/print, and network edge applications.

### High Performance

- Supports the latest Intel® Xeon® E3-1200 v3 series 4-core processors for maximum energy efficiency and performance
- Supports up to 32 GB memory and 16 TB drive capacity, which is ideal for network infrastructure applications
- RAID controller supporting LSI CacheVault technology for high I/O throughput and data protection

### Superior Energy Efficiency

- NEC's advanced intelligent fan control technology minimizes cooling power consumption with individually optimized fan speeds
- 80 PLUS® Gold certified redundant power supply and 80 PLUS® Platinum certified non-redundant power supply enable greater energy savings

### Simplified Manageability

- Integrated EXPRESSSCOPE Engine 3 technology provides extensive remote management capabilities regardless of the status of the server's power or operating system
- NEC ESMPRO software suite provides centralized server management capabilities as well as advanced power management

## HARDWARE SPECIFICATION

MODEL	Express5800/R110g-1E
Form factor / height	1U Rack
Number of processors	1
Processors	Intel® Pentium® Processor Processor G3240 (3.10 GHz/2-core/3 MB) Intel® Xeon® Processor E3-1220 v3 (3.10 GHz/4-core/8 MB) Intel® Xeon® Processor E3-1231 v3 (3.40 GHz/4-core/8 MB) Intel® Xeon® Processor E3-1240L v3 (2 GHz/4-core/8 MB) Intel® Xeon® Processor E3-1275L v3 (2.70 GHz/4-core/8 MB) Intel® Xeon® Processor E3-1271 v3 (3.60 GHz/4-core/8 MB)
Memory type	DDR3L-1600 ECC UDIMM
Memory slots	4
Maximum memory	32 GB
Storage type	Hot plug 2.5-inch SAS HDD, Hot plug 2.5-inch SATA HDD, Hot plug 2.5-inch SAS SSD Hot plug 3.5-inch SATA HDD
Maximum internal drive bays	4 3.5-inch 6 to 8 2.5-inch with optional drive cage
Maximum internal storage	16 TB
Removable media	1 bay for optical disk drive
Expansion slots	1 PCIe x16 Gen 3, 1x PCIe x4 Gen 2
Video (VRAM)	Integrated in the server management controller (32 MB)
Network	2 1000BASE-T plus 1 100BASE-TX for management
Redundant power supply	Optional, hot plug
Redundant cooling fan	Standard, hot plug
Power supplies	Non-hot plug: 400 Watt Hot plug: 500 Watt
Interface	1 VGA, 1 to 2 serial, 3 USB 3.0, 2 USB 2.0 (plus 1 internal USB 2.0), 2 LAN, 1 management LAN
Dimensions (W x D x H) and maximum weight	444.0 x 615.2 x 43.6 mm / 17.5 x 24.2 x 1.7 in / 17.5 Kg / 38.58 lbs
Temperature and humidity conditions (non-condensing)	Operating: 10 to 40 °C / 50 to 104 °F, 20 to 80% Non-operating: -10 to 55 °C / 14 to 131 °F, 20 to 80%
Operating systems and virtualization software	Microsoft® Windows Server® 2008 x86 Standard / Enterprise Microsoft® Windows Server® 2008 R2 Standard / Enterprise Microsoft® Windows Server® 2012 Standard / Datacenter Microsoft® Windows Server® 2012 R2 Standard / Datacenter Red Hat® Enterprise Linux® 5 Red Hat® Enterprise Linux® 6 Red Hat® Enterprise Linux® 7 VMware® ESXi™ 5 VMware® ESXi™ 6

Note : For Linux support, go to the NEC website at <http://www.nec.com/global/prod/express/linux/>, or contact our sales representative

©Copyright 2015 NEC Corporation. The information and specifications contained in this publication are subject to modification without prior notice. Microsoft and Windows Server are either registered trademarks or trademarks of Microsoft Corporation in the United States and/or other countries. Intel, Intel Logo, Pentium, Pentium Inside, Xeon, and Xeon Inside are trademarks of Intel Corporation in the U.S. and/or other countries. Linux is a trademark of Linus Torvalds. Red Hat is a registered trademark of Red Hat, Inc. in the U.S. VMware is a registered trademark or trademark of VMware, Inc. in the United States and/or other jurisdictions. All other names of products and brands cited are the property of their respective owners. NEC is not responsible for photographic or typing errors.



Asia (APAC)  
NEC Corporation

7-1, Shiba 5-chome Minato-ku  
Tokyo 108-8001 Japan

[www.nec.com/express](http://www.nec.com/express)

Europe (EMEA)  
NEC Enterprise Solutions

Olympia 4  
1213 NT Hilversum  
The Netherlands  
+31 35 6899111

[www.nec-enterprise.com](http://www.nec-enterprise.com)

North America  
NEC Corporation of America

3151 Jay Street, Ste. 110,  
Santa Clara, CA 95054 U.S.  
+1 866 632 3226

[www.necam.com/servers](http://www.necam.com/servers)