



FEATURES:

- Suitable for RoHS reflow profile
- High current rating and low DCR
- Special lead wire design to prevent open circuit failure
- Excellent terminal strength to mechanical stress

APPLICATIONS:

- OA equipments
- PC and notebook
- LCD TV set
- Power supply

ELECTRICAL SPECIFICATIONS:

Abrakon P/N:	ASPI-1004 Series
Operating Temperature:	-40°C to +85°C
Storage Temperature:	+5°C to +40°C

PART NUMBER	INDUCTANCE (uH)	Tolerance	DCR (Ω) max	IDC (A) max	Inductance Code
ASPI-1004-100	10	K	0.053	2.38	100
ASPI-1004-120	12	K	0.061	2.13	120
ASPI-1004-150	15	K	0.070	1.87	150
ASPI-1004-180	18	K	0.081	1.73	180
ASPI-1004-220	22	K	0.088	1.60	220
ASPI-1004-270	27	K	0.100	1.44	270
ASPI-1004-330	33	K	0.120	1.26	330
ASPI-1004-390	39	K	0.151	1.20	390
ASPI-1004-470	47	K	0.170	1.10	470
ASPI-1004-560	56	K	0.199	1.01	560
ASPI-1004-680	68	K	0.223	0.91	680
ASPI-1004-820	82	K	0.252	0.85	820
ASPI-1004-101	100	K	0.344	0.74	101
ASPI-1004-121	120	K	0.396	0.69	121
ASPI-1004-151	150	K	0.544	0.61	151
ASPI-1004-181	180	K	0.621	0.56	181
ASPI-1004-221	220	K	0.721	0.53	221
ASPI-1004-271	270	K	0.949	0.45	271
ASPI-1004-331	330	K	1.100	0.42	331
ASPI-1004-391	390	K	1.245	0.38	391
ASPI-1004-471	470	K	1.526	0.35	471
ASPI-1004-561	560	K	1.904	0.32	561

Test Conditions

Inductance: 2.52MHz for 10μH ~ 82μH; 1kHz for 100μH ~ 560μH

Isat: ΔL/L (initial) ≥ -10% or ΔT=40°C (Ta=20°C), whichever is lower.

OPTIONS AND PART IDENTIFICATION

ASPI-1004- [] [] - []

Inductance Code
Please refer to the table above

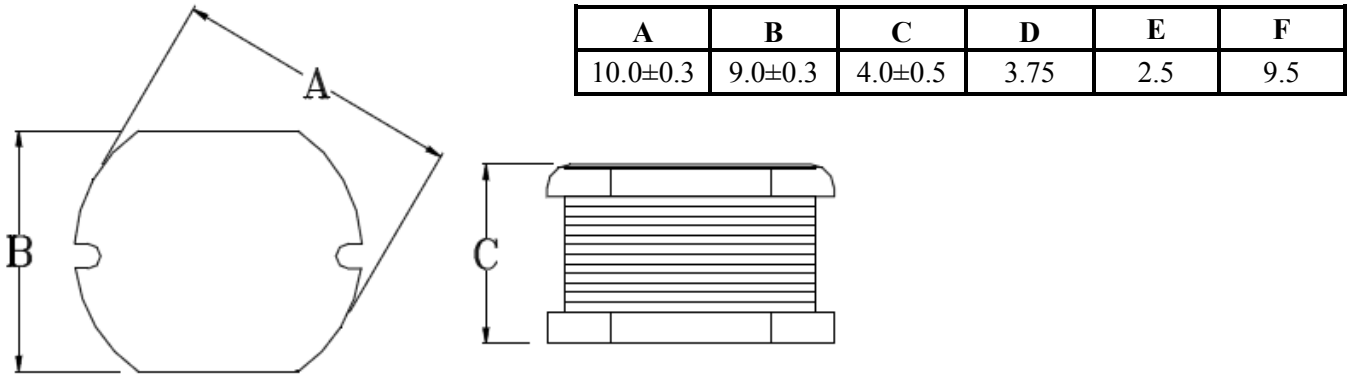
Tolerance %
K: ± 10%

Packaging
T: Tape and Reel (500pcs / reel)

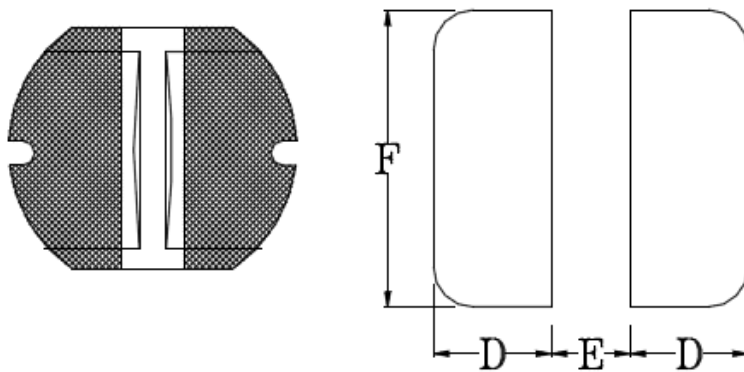




OUTLINE DRAWING:

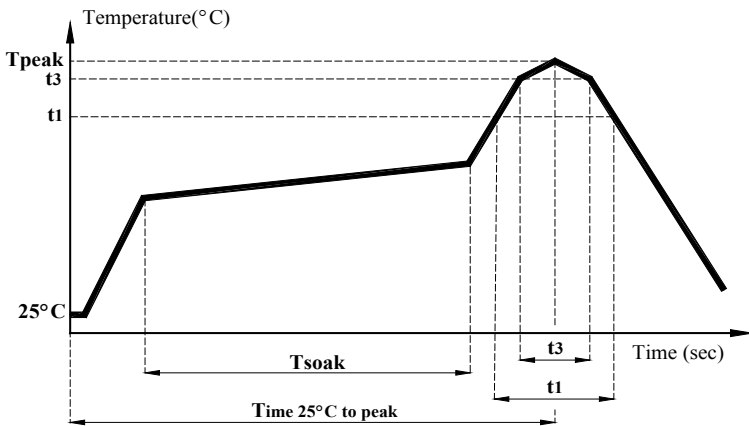


Recommended Land Pattern



Dimension: mm

REFLOW PROFILE:

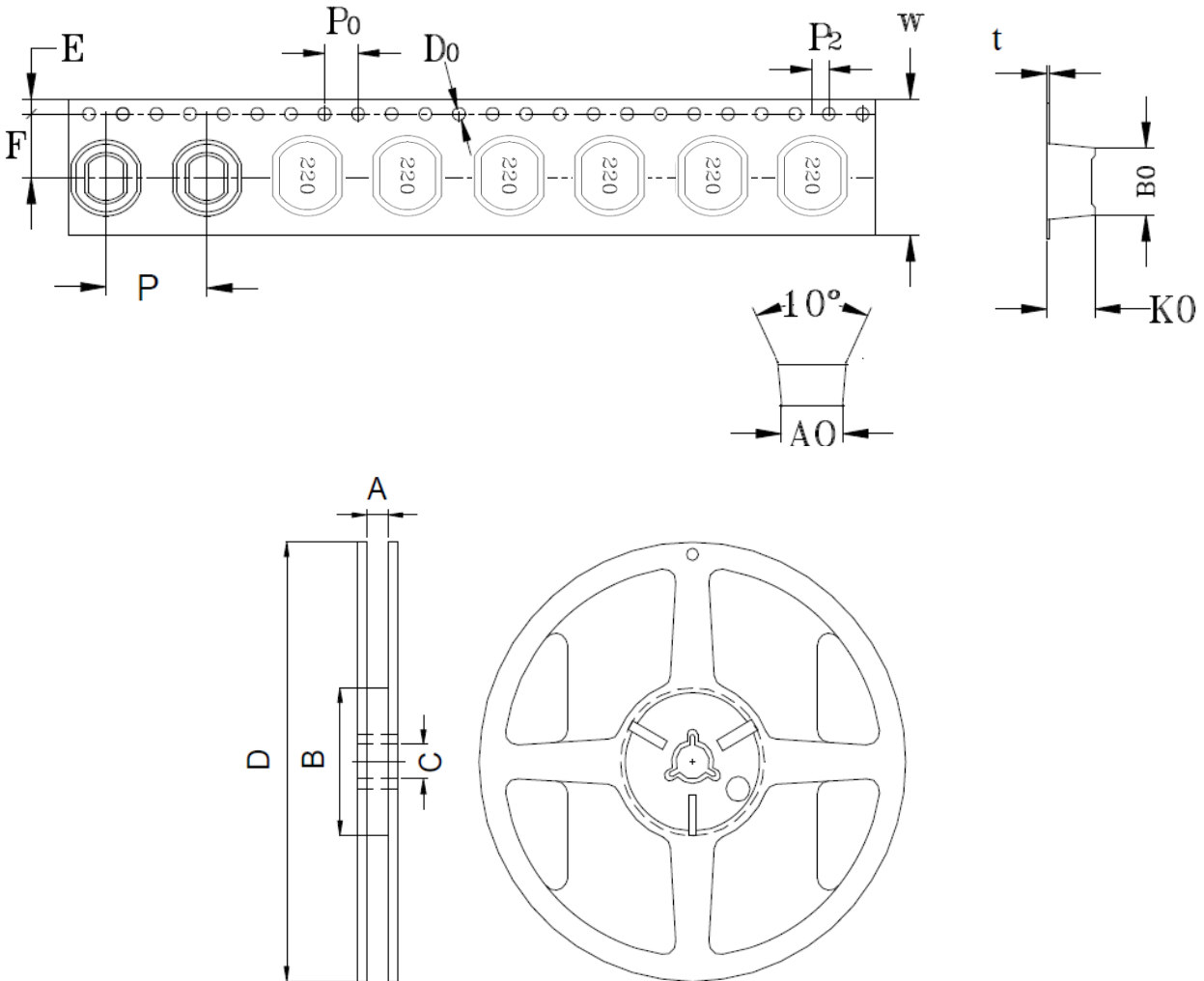


Item	mark	
Temperature rise gradient		3°C/sec (max)
Heating time	Tsoak	50s ~ 150s
Heating temperature		120°C~180°C
Time over 217°C	t1	70 sec
Time within 5°C of actual peak temperature	t3	10~30 sec
Peak temperature	Tpeak	250 (+0 / -5 °C)
Time 25°C to peak Temperature		6 minutes max.



TAPE & REEL:

T: 500pcs / reel



CARRIER TAPE / SIZE (mm)										REEL 13"×24mm			
A0	B0	K0	F	E	W	P	Po	P2	t	A	B	C	D
9.3 ± 0.1	10.3 ± 0.1	4.2 ± 0.1	11.5 ± 0.1	1.75 ± 0.1	24 ± 0.3	12 ± 0.1	4 ± 0.1	2 ± 0.1	0.4 ± 0.05	24.5 ± 0.2	100 ± 0.5	13.2 ± 0.3	330 ± 1.0

Dimension: mm

ATTENTION Abracon Corporation's products are COTS – Commercial-Off-The-Shelf products; suitable for Commercial, Industrial and, where designated, Automotive Applications. Abracon's products are not specifically designed for Military, Aviation, Aerospace, Life-dependant Medical applications or any application requiring high reliability where component failure could result in loss of life and/or property. For applications requiring high reliability and/or presenting an extreme operating environment, written consent and authorization from Abracon Corporation is required. Please contact Abracon Corporation for more information.