

GSS-141N - GSS501M

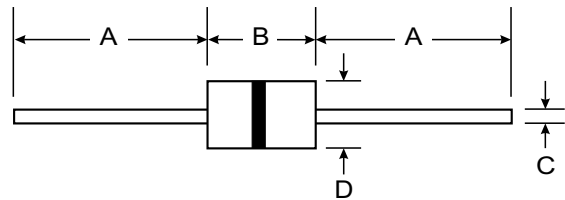
AXIAL LEADED GLASS TUBE

Features

- Small Capacitance and excellent Insulation Resistance(100MΩ min)
- Small Size, No Polarity. No Dark effect
- Low Electrode Capacitance (1pF Max).
- Quick Response For Electrostatic, Voltage and low limiting voltage
- Stable for repeated discharge test conditions.
- Operating Temperature: -40°C ~ + 85°C
- Storage temperature: -40°C ~ + 125°C

Application

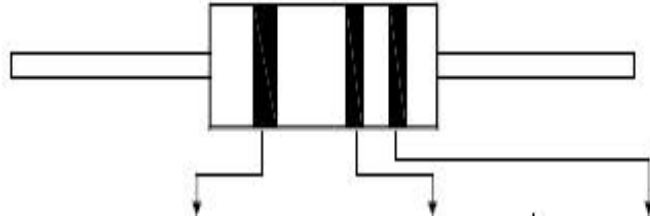
- For instantaneous over-voltage protection to ADSL, ISDN, MODEM, FAX, TEL, Power Supplies, Alarm systems
- For Instantaneous over-voltage protection to RS485, RS232 Port, CATV, Video Transceiver.
- For Instantaneous Over-Voltage Protection Toammeter, Water Meter Auto Admin system, etc



DIP		
Dim	Min	Max
A	28.4	0.5
B	7.0	0.4
C	0.5	0.1
D	3.1	0.3
All Dimensions in mm		

Electrical Characteristics

Part Number	Spark-Over Vs(V)		Insulation Test voltage	Resistance IR (MΩ)	Capacitance of electrostatic 1KHz-6V	Surge current capacity 8/20us	Surge Life
	DC Nominal value	Voltage (Min-Max)					
GSS-141N	140V	(98V-182V)	DC100V	>1000MΩ	1PF(MAX)	3000A	8/20us 150A 300times
GSS-181N	180V	(126V-234V)					
GSS-201M	200V	(160V-240V)					
GSS-251M	250V	(200V-300V)					
GSS-301M	300V	(240V-360V)	DC250V	>1000MΩ	1PF(MAX)	3000A	8/20us 150A 300times
GSS-401M	400V	(320V-480V)					
GSS-471M	470V	(400V-560V)					
GSS-501M	500V	(400V-600V)					



Part Number	Colour Code 1	Colour Code 2	Colour Code 3
GSS-301M	Orange	Red	Red
GSS-501M	Green	---	---

6 Part Number Description:

