

ATLANTIC VERSION TERMINATOR INTERFACE ADAPTER	PART NUMBER	REVISION	DESCRIPTION	FEED TYPE	APPLICATOR STYLE CONVERSION CHART						
					CONVERT TO	PART NUMBERS REQUIRED					
	2151693-2	A	FINE CRIMP HEIGHT ADJUST	PNEUMATIC	-	-	-	-	-	-	
	2151693-5	A	FINE CRIMP HEIGHT ADJUST	SERVO LATCH PLATE $\Delta 4$	SERVO LATCH PLATE 2119951-1	2161540-1	8-2151693-5	1901094-3	1976043-1	2168400-6 (QUANTITY 2)	
	2151693-6	A	NON-CRIMP HEIGHT ADJUST	SERVO LATCH PLATE $\Delta 10$	-	-	-	-	-	-	
	2151693-7	A	FINE CRIMP HEIGHT ADJUST	NONE	-	-	-	-	-	-	
	7-2151693-7	A	CRIMP TOOLING KIT	-	-	-	-	-	-	-	

APPLICATOR DATA		
CRIMP WIRE	SIZE	TYPE
	.136 [3.45 mm]	D
INSUL	-	-
APPLICATOR INSTRUCTIONS 408-10389		

TERMINAL DATA: TE TERMINAL		TE CRIMP SPECIFICATION	
TERMINAL NAME: FULLY INSULATED FASTON			
WIRE STRIP LENGTH		INSULATION DIAMETER RANGE	
.265-.297 IN [6.73-7.54 mm]		\varnothing .105 MAX	
TERMINAL APPLICATION SPECIFICATION	114-2123		
TERMINALS APPLIED $\Delta 1$			
TE TERMINAL	TE TERMINAL	TE TERMINAL	TE TERMINAL
7-520365-2			

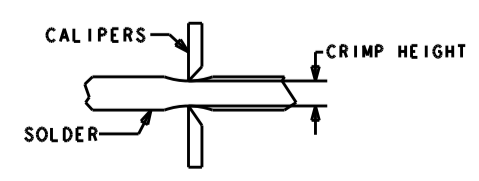
WIRE SIZE	CRIMP HEIGHT INCH [mm]	CRIMP HEIGHT REFERENCE SETTING	\varnothing SOLDER
22	0.065 +/- 0.002 [1.65 +/- 0.05]	6.0	.12 IN [3.05mm]
24 OR 26	0.060 +/- 0.002 [1.52 +/- 0.05]	7.4	.12 IN [3.05mm]

- $\Delta 1$ RECOMMENDED SPARE PARTS
- $\Delta 2$ GREASE BEARING SURFACES LIGHTLY
- 3. LUBRICATE DAILY PER THE APPLICATOR INSTRUCTION SHEET SUPPLIED WITH THE APPLICATOR.
- $\Delta 4$ APPLICATOR SPECIFIC DATA TO BE ENTERED INTO BLANK MEMORY CHIP AT ASSEMBLY. SEE BELOW FOR PART NUMBER:
 PNEUMATIC FEED WITH "SMART APPLICATOR" CONVERSION: 8-2151693-4
 SERVO FEED WITH "FINE CRIMP HEIGHT ADJUST": 8-2151693-5
 SERVO FEED WITH "NON-CRIMP HEIGHT ADJUST": 8-2151693-6
- 5. ADJUSTMENT OF THE STRIPPER MAY BE REQUIRED WHEN MOVING THE APPLICATOR BETWEEN BENCH AND LEADMAKER APPLICATIONS.
- $\Delta 6$ GREASE THREADS, GROOVE AND O-RING ON ITEMS 35 & 252.
- $\Delta 7$ MAGNET, ITEM 166 MUST BE ORIENTED CORRECTLY IN ORDER TO PROPERLY ACTUATE THE COUNTER.
- $\Delta 8$ CRIMP HEIGHT REFERENCE SETTING WAS THE SETTING USED WHEN THE APPLICATOR WAS QUALIFIED AT THE FACTORY. ADJUSTMENT MAY BE NECESSARY WHEN RUNNING APPLICATOR IN THE FIELD.
- $\Delta 9$ TO CONVERT THE APPLICATOR TO A NON-CARRIER CUTTING STYLE, REMOVE ITEM 13 AND ATTACH TO THE LOCATION ON THE BACK SIDE OF THE HOUSING. REFER TO INSTRUCTION SHEET FOR ADDITIONAL INFORMATION.
- $\Delta 10$ WHEN ASSEMBLING -6 NON-CRIMP HEIGHT ADJUST APPLICATOR USE SHIM PACK 2119957-2 TO ALIGN APPLICATOR'S MAXIMUM WIRE CRIMP HEIGHT AT NORMAL TERMINATOR SHUT HEIGHT
- $\Delta 11$ ITEM 7 MUST BE REMOVED IF APPLICATOR IS USED ON BENCH MACHINE.
- $\Delta 12$ ITEM 5/22 AND 9 ARE REQUIRED WHEN RUNNING ON A LEADMAKER. ITEM 42 REQUIRED WHEN RUNNING ON A BENCH MACHINE.
- $\Delta 13$ TO CHECK CRIMP HEIGHT. CRIMP SOLDER (\varnothing .12 IN [3.05mm] 60/40 SOLID CORE) AND MEASURE AT CENTER OF SLUG.

- $\Delta 4$ IT MAY BE NECESSARY TO MODIFY THE T-TERMINATING/K-PRESS BASE PLATE BEFORE USE BY ADDING A 10-32 HOLE TO RELOCATE THE FORWARD STOP AS SHOWN.
-
- $\Delta 5$ ITEMS 253 AND 255 MUST BE INSTALLED IN THE G-TERMINATING UNIT CHIP RELIEF HOLE BEFORE INSTALLING THE APPLICATOR.
- $\Delta 6$ ITEM 257, REQUIRED IF APPLICATOR IS RUN ON T-TERMINATING UNIT/K-PRESS. GUARD, ITEM 256, REQUIRED IF APPLICATOR IS BEING USED ON G-TERMINATOR.
- $\Delta 7$ TERMINAL PITCH NOT COMPATIBLE WITH MECHANICAL FEED.
- $\Delta 18$ APPLY PART NUMBER 1-23419-5 LOCTITE TO THREADS OF ITEM 62. FOR -6 ONLY APPLY PART NUMBER 1-23419-5 LOCTITE TO THREADS OF ITEMS 37.
- $\Delta 19$ ITEMS NOT SHOWN.
- $\Delta 20$ ITEM 261 REQUIRED WHEN APPLICATOR IS REMOVED FROM LEADMAKER AND PLACED IN AMP-O-LECTRIC* TERMINATING UNIT.

***WARNING**
 ON INSTALLATION, SET WIRE DISC, ITEM 40 TO LARGEST WIRE SIZE SETTING. USE OF SETTINGS BELOW MINIMUM REQUIRED CRIMP HEIGHT SETTING WILL CAUSE DAMAGE TO CRIMP TOOLING.

$\Delta 19$	-	-	-	-	1	1-18023-1	SCR, SHC, M4x10	262
$\Delta 20$	-	-	-	-	1	803931-1	BRACKET, HOLD DOWN	261
	-	-	-	-	1	2119957-2	APPLICATOR SHIM PACK	260
$\Delta 9$	-	REF	REF	REF	REF	462992-7	GUARD ASSEMBLY	257
$\Delta 10$	-	REF	REF	REF	REF	679532-1	INSERT, GUARD	256
$\Delta 11$	-	1	1	1	1	189728-1	BRACKET, SPACER	255
$\Delta 12$	-	1	1	1	1	568681-1	SPACER, BASE PLATE	253
	-	1	-	-	1	8-21084-0	O-RING, .676 ID, .070 DIA. MAT.	252
	-	-	-	-	1	2119640-1	PUSH ROD, AIR FEED	250
	-	-	-	-	1	2079988-1	BUSHING, LCH5-12, MISUMI	249
	-	-	-	-	1	2119641-1	FEED CAM, AIR FEED	248
	-	1	-	-	1	2119798-1	DETENT PIN	247
	-	1	-	-	1	1-22279-3	SPRING, COMPRESSION	246
	-77	-7	-6	-5	-2	PART NO	DESCRIPTION	ITEM NO



ATLANTIC VERSION
 Shown on sheets 1 of 4 & 2 of 4
 (Pacific version shown on sheets 3 of 4 & 4 of 4)

SET UP GAUGE	LOC	DIST	REVISIONS					
2119599-1	A	66	P	LTN	DESCRIPTION	DATE	OWN	APVD
			A		RELEASED	11OCT2012	LG	MC

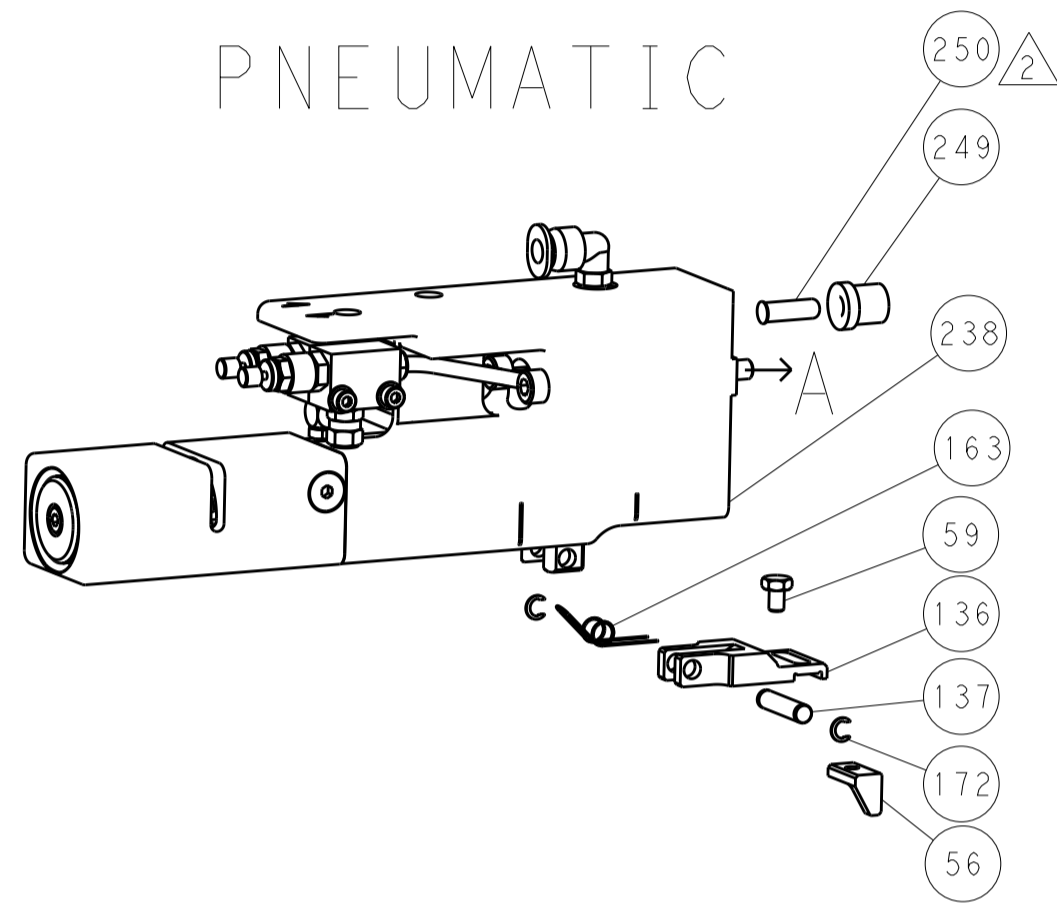
-	-	1	-	-	2119758-1	RAM, AMP STYLE, SIDE FEED, NON-ADJ.	245
-	1	1	1	1	7-18023-7	SCR, SKT HD CAP M3 X 4.0	241
-	-	2	2	-	2168400-6	SHCS, LOW HEAD, RoHS, M5 X 16	240
-	-	-	-	-	2119580-1	MECHANICAL FEED ASSEMBLY	239
-	-	-	-	1	2063440-1	AIR FEED MODULE	238
-	-	1	1	-	2119740-2	TAG, IDENTIFICATION	213
-	-	1	1	-	1901094-3	SPACER, FEEDER	198
-	-	-	-	2	21045-3	RING, RETAIN, EXTERN, 3/16 CRESCENT	172
-	1	1	1	1	994969-1	MAGNET, RARE EARTH HIGH ENERGY	166
-	REF	REF	REF	REF	994970-2	COUNTER, MAGNETIC	164
-	-	-	-	1	240638-1	SPRING, FEED FINGER	163
-	-	-	-	1	3-23627-7	PIN, RETAIN, GRVD, 3/16 X .854	137
$\Delta 4$	-	-	-	1	2119799-1	HOLDER, FEED FINGER, AF	136
-	-	REF	REF	-	SEE NOTE 4	MEMORY CHIP, PROGRAMMED	135
-	-	1	1	-	1633743-1	SERVO FEED LATCH ASM	133
-	1	1	1	1	1-22281-8	SPRING, COMPRESSION	121
-	1	1	1	1	1-690438-0	FRONT STRIP GUIDE	96
-	6	6	6	6	2168083-1	SCR, SKT HD CAP, RoHS, M3 X 8.0	95
-	1	1	1	1	2168083-6	SCR, SKT HD CAP, RoHS, M5 X 65	93
-	1	1	1	1	455888-4	SPACER, CRIMPER	82
-	1	1	1	1	240641-9	SPACER	81
-	1	1	1	1	2119956-1	DOCUMENTATION PACKAGE	71
-	1	1	1	1	2161332-3	DEPRESSOR, WIRE FUNNEL	70
-	1	1	1	1	2161331-1	SPACER, WIRE FUNNEL DEPRESSOR	69
-	2	2	2	2	1-18028-4	WASHER, FLAT, REG M3	68
-	1	-	-	1	2119740-1	TAG, IDENTIFICATION	67
-	2	2	2	2	2168078-1	SCREW, DRIVE, RH, RoHS	66
-	1	-	1	1	2119793-1	LIMITER, ADJUSTMENT BOLT	63
$\Delta 8$	-	3	-	3	992763-5	SCR, SET, SOC, CONE POINT, M3 X 4.0	62
-	2	2	2	2	2-18032-5	SCR, SET, FLT POINT M5 X 20.0	61
-	1	1	1	1	2079383-4	SCR, BHSC, RoHS (M4 X 8)	60
-	-	-	-	1	5-18022-5	SCR, HEX HD CAP, M4 X 6.0	59
-	-	-	-	1	462427-2	FINGER, FEED	56
-	4	4	4	4	2168400-1	SHCS, LOW HEAD, RoHS, M4 X 12	54
-	2	2	2	2	2168083-3	SCR, SKT HD CAP, RoHS, M4 X 12.0	53
-	-	-	-	1	18023-9	SCR, SKT HD CAP M4 X 6.0	49
-	1	1	1	1	1-2119656-9	APPLICATOR BASIC ASSEMBLY, SF	46
-	1	-	1	1	2119370-1	RAM, AMP STYLE, SIDE FEED	44
$\Delta 2$	-	1	1	1	462433-9	SUPPORT, INSULATION	42
-	1	1	1	1	2079383-7	SCR, BHSC, RoHS (M8 X 25)	41
-	1	-	1	1	2119645-1	DISC, NUMBERED FA WIRE ADJUSTMENT	40
-	1	-	1	1	2119957-1	APPLICATOR SHIM PACK	39
-	1	1	1	1	2119644-2	RAM WASHER, PRECISION	38
$\Delta 8$	-	1	1	1	2119085-1	FA HEAD, ATLANTIC STYLE	37
-	1	-	1	1	2119092-1	BOLT, ADJUSTMENT	35
-	2	2	2	2	5-22278-1	SPRING, COMPRESSION	33
-	1	1	1	1	2161328-1	HEX HEAD, FLANGED, M5 X 8mm LONG	32
-	2	2	2	2	1-2168083-4	SCR, SKT HD CAP, RoHS, M4 X 5	30
-	1	1	1	1	2161336-1	PLATE, REAR STRIP GUIDE	29
-	2	2	2	2	22281-9	SPRING, COMPRESSION	27
-	1	1	1	1	356835-1	LEVER, DRAG RELEASE	26
-	1	1	1	1	240792-1	DRAG, TERMINAL	25
-	1	1	1	1	684042-4	GUIDE, STRIP, FRONT	24
$\Delta 2$	-	1	1	1	980371-4	SCR, SKT HD SHLDR 5.0 DIA X 6.0	23
-	1	1	1	1	462431-6	WIRE FUNNEL	22
-	1	1	1	1	2168083-2	SCR, SKT HD CAP, RoHS, M4 X 8.0	21
-	1	1	1	1	1-18028-2	WASHER, FLAT, REG M4	20
-	1	1	1	1	2119533-1	STRIPPER, SIDE FEED	19
-	1	1	1	1	463460-2	HOLD DOWN, TERMINAL	18
$\Delta 1$	-	1	1	1	469542-3	REAR FLOATING SHEAR	17
-	2	2	2	2	1-2168083-1	SCR, SKT HD CAP, RoHS, M3 X 6	16
$\Delta 1$	-	1	1	1	2161335-2	SHEAR PLATE, REAR	15
-	1	1	1	1	2119862-2	SHEAR HOLDER, REAR	14
$\Delta 9$	-	1	1	1	2119806-1	INSERT, SHEAR	13
-	1	1	1	1	3-22280-3	SPRING, COMPRESSION	12
-	1	1	1	1	356885-4	STOP, SHEAR	11
$\Delta 2$	-	1	1	1	462843-8	TERMINAL SUPPORT	9
$\Delta 1$	1	1	1	1	464291-6	ANVIL, SAND-BLASTED 22-18	8
$\Delta 1$	-	1	1	1	803925-2	GUIDE, CARRIER SCRAP	7
-	1	1	1	1	2-690468-5	DEPRESSOR SHEAR, REAR	6
$\Delta 2$	-	1	1	1	462431-3	WIRE FUNNEL	5
-	1	1	1	1	1-238009-4	BLOCK, FL CRIMPER SPACER	4
$\Delta 1$	1	1	1	1	464290-2	CRIMPER, SEMI-FLAT 22-18	1
-77	-7	-6	-5	-2	PART NO	DESCRIPTION	ITEM NO

DIMENSIONS:		TOLERANCES UNLESS OTHERWISE SPECIFIED:		DRAWING NO		DATE	
mm	0 PLC \pm	1 PLC ± 0.1	2 PLC ± 0.02	3 PLC ± 0.005	4 PLC ± 0.0005	ANGLES \pm	FINISH
MATERIAL				WEIGHT	APVD	DATE	REV
-				-	E. ELBIN	12JUN2012	1
-				-	G. HOFNER	12JUN2012	2
-				-	D. WEAVER	12JUN2012	3
-				-	C. HOFNER	12JUN2012	4
-				-	A. HOFNER	12JUN2012	5
-				-	T. HOFNER	12JUN2012	6
-				-	J. HOFNER	12JUN2012	7
-				-	K. HOFNER	12JUN2012	8
-				-	L. HOFNER	12JUN2012	9
-				-	M. HOFNER	12JUN2012	10
-				-	N. HOFNER	12JUN2012	11
-				-	O. HOFNER	12JUN2012	12
-				-	P. HOFNER	12JUN2012	13
-				-	Q. HOFNER	12JUN2012	14
-				-	R. HOFNER	12JUN2012	15
-				-	S. HOFNER	12JUN2012	16
-				-	T. HOFNER	12JUN2012	17
-				-	U. HOFNER	12JUN2012	18
-				-	V. HOFNER	12JUN2012	19
-				-	W. HOFNER	12JUN2012	20
-				-	X. HOFNER	12JUN2012	21
-				-	Y. HOFNER	12JUN2012	22
-				-	Z. HOFNER	12JUN2012	23
-				-	AA. HOFNER	12JUN2012	24
-				-	AB. HOFNER	12JUN2012	25
-				-	AC. HOFNER	12JUN2012	26
-				-	AD. HOFNER	12JUN2012	27
-				-	AE. HOFNER	12JUN2012	28
-				-	AF. HOFNER	12JUN2012	29
-				-	AG. HOFNER	12JUN2012	30
-				-	AH. HOFNER	12JUN2012	31

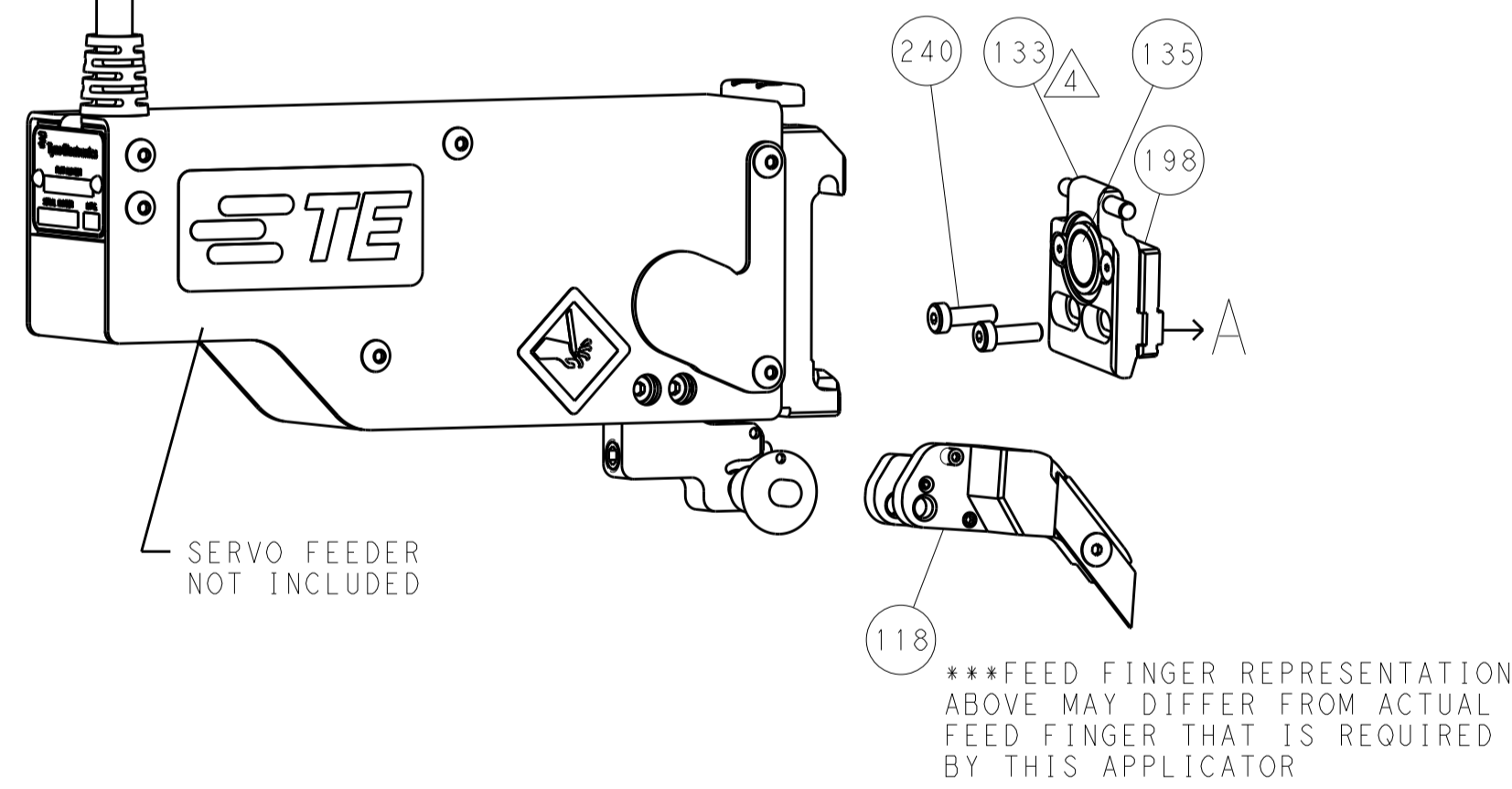
LOC		DIST		REVISIONS			
A	66	P	LTM	DESCRIPTION	DATE	OWN	APVD
		-	-	SEE SHEET 1	-	-	-

FEED TYPE

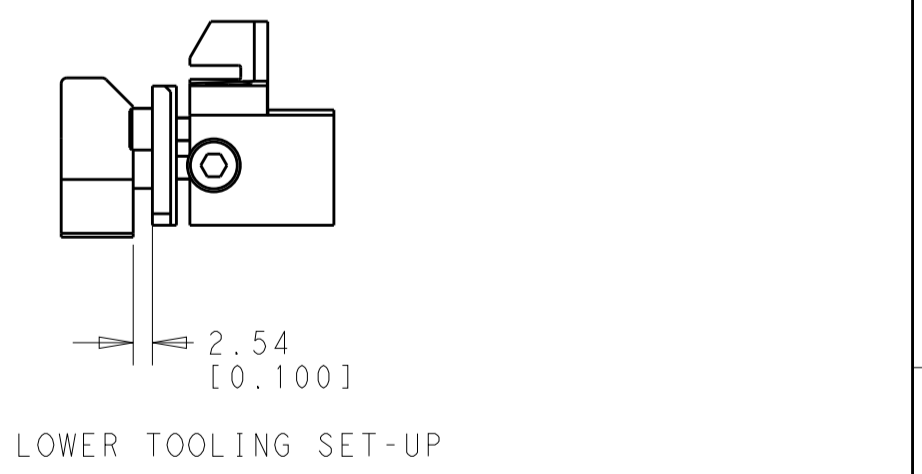
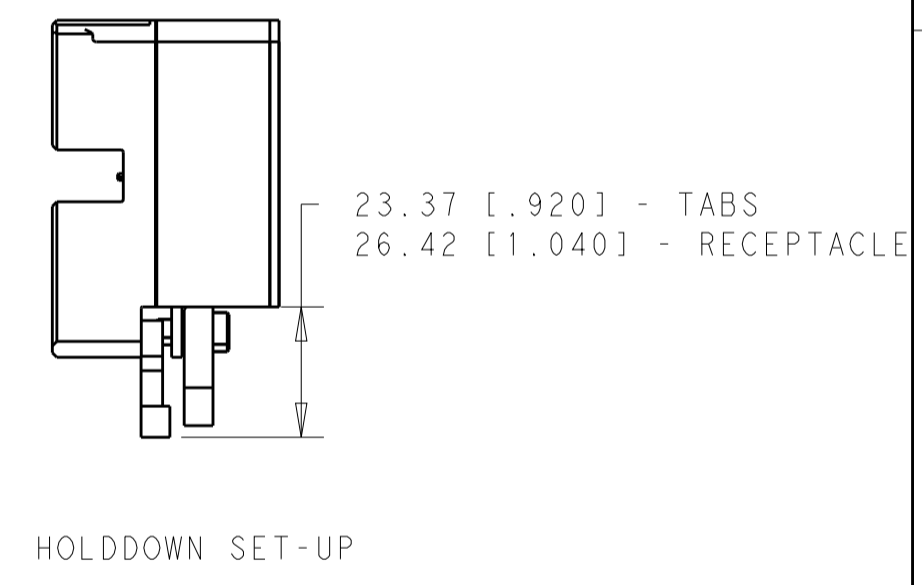
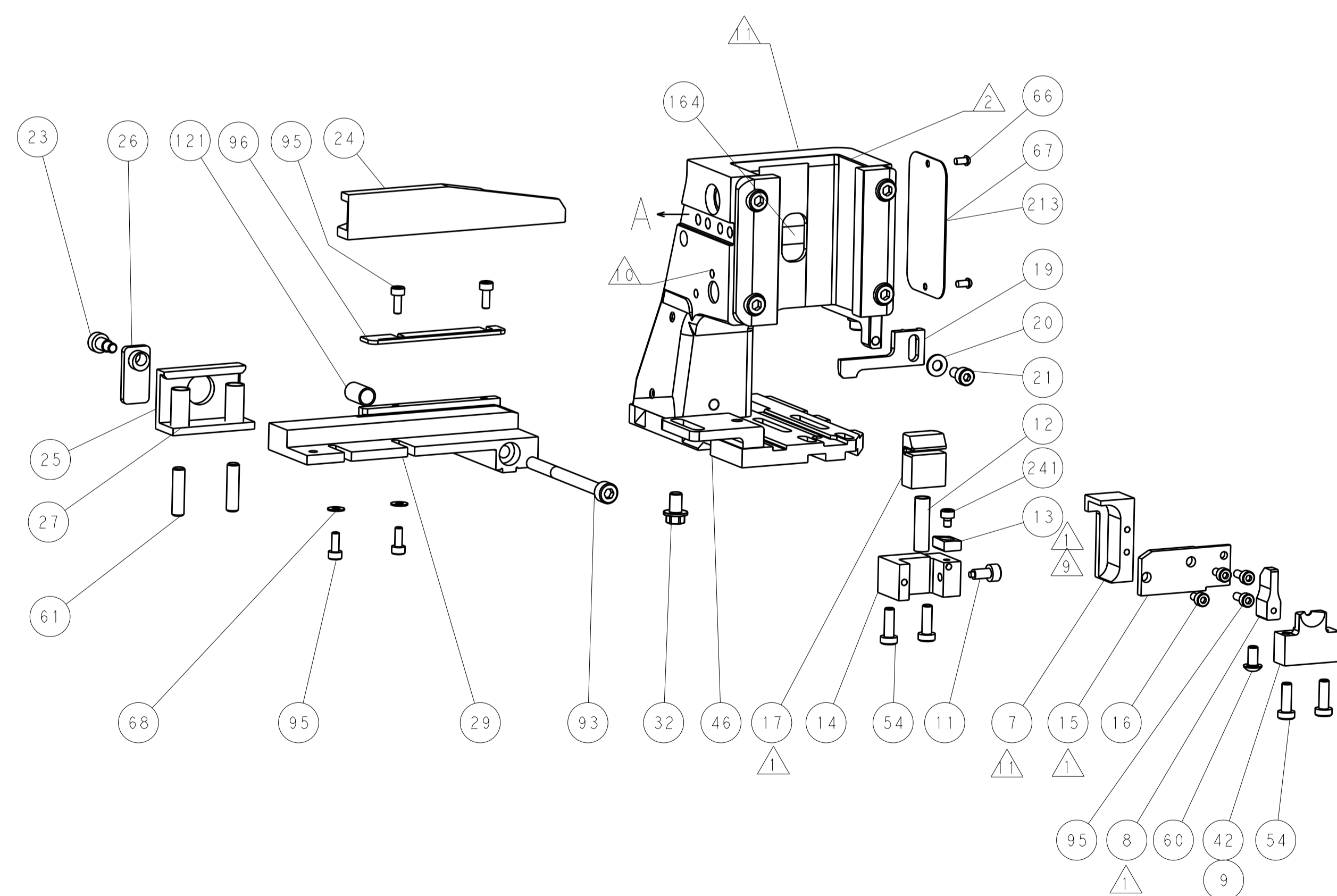
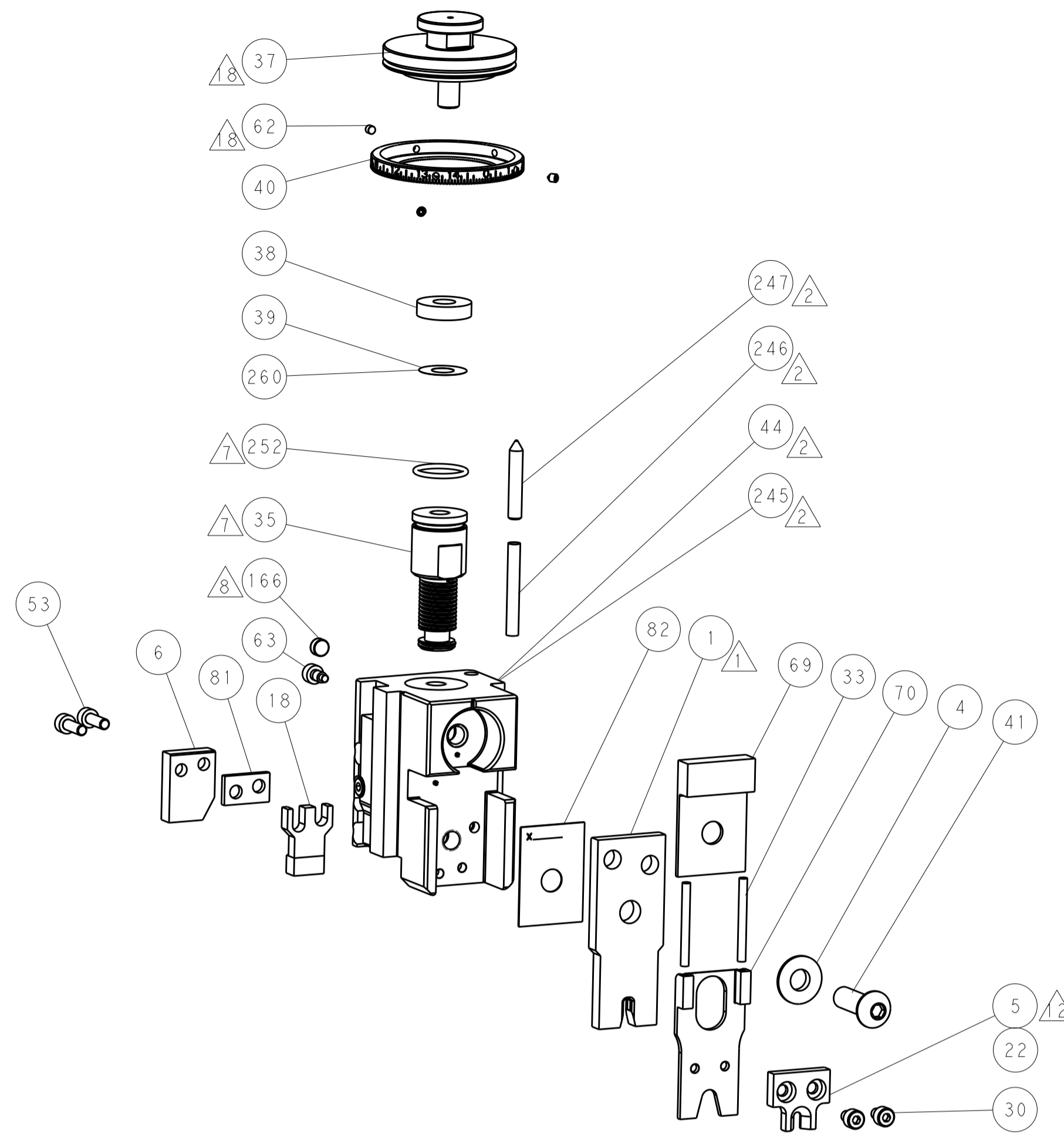
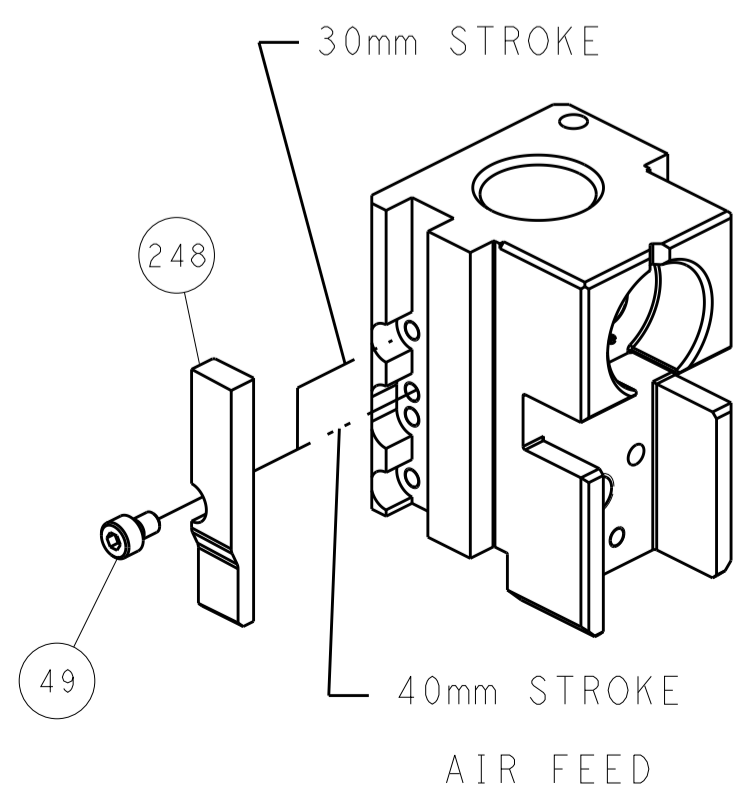
PNEUMATIC



SERVO LATCH PLATE



CAM POSITIONS



ATLANTIC VERSION
 Shown on sheets 1 of 4 & 2 of 4
 (Pacific version shown on sheets 3 of 4 & 4 of 4)

DIMENSIONS:		TOLERANCES UNLESS OTHERWISE SPECIFIED:		OWN: B. WEAVER 12JUN2012	TE Connectivity Harrisburg, PA 17105-3608
mm	0 PLC ±0.1	1 PLC ±0.1	2 PLC ±0.02	CHK: G. HOFNER 12JUN2012	
	3 PLC ±0.005	4 PLC ±0.0005	ANGLES ±0.0005	APVD: T. ELBIN 12JUN2012	NAME: Ocean Side Feed Applicator
MATERIAL:	FINISH:	WEIGHT:	SCALE: 1:1	SHEET 2 OF 4	REV A

PACIFIC VERSION TERMINATOR INTERFACE ADAPTER	PART NUMBER	REVISION	DESCRIPTION	FEED TYPE	APPLICATOR STYLE CONVERSION CHART					
					CONVERT TO	PART NUMBERS REQUIRED				
	2-2151693-2	A	FINE CRIMP HEIGHT ADJUST	PNEUMATIC	-	-	-	-	-	-
					SERVO LATCH PLATE	2119951-1	2161540-1	8-2151693-5	1901094-3	1976043-1
	2-2151693-5	A	FINE CRIMP HEIGHT ADJUST	SERVO LATCH PLATE Δ	-	-	-	-	-	-
					PNEUMATIC FEED	2119950-1	-	-	2119641-2	2119799-1
2-2151693-7	A	FINE CRIMP HEIGHT ADJUST	NONE	-	-	-	-	-	-	
7-2151693-7	A	CRIMP TOOLING KIT	-	-	-	-	-	-	-	

APPLICATOR DATA		
CRIMP WIRE	SIZE	TYPE
INSUL	.136 [3.45 mm]	D
APPLICATOR INSTRUCTIONS 408-10389		

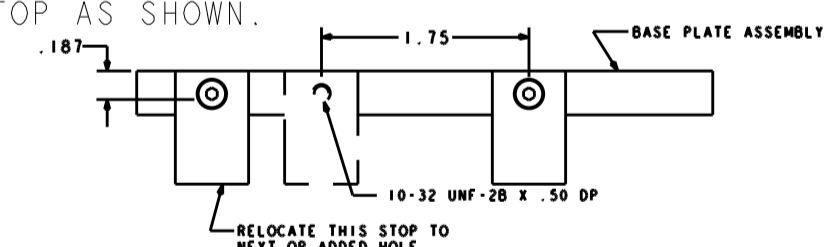
TERMINAL DATA: TE TERMINAL		TE CRIMP SPECIFICATION	
TERMINAL NAME: FULLY INSULATED FASTON			
WIRE STRIP LENGTH		INSULATION DIAMETER RANGE	
.265-.297 IN [6.73-7.54 mm]		ϕ .105 MAX	
TERMINAL APPLICATION SPECIFICATION	114-2123		
TERMINALS APPLIED Δ			
TE TERMINAL	TE TERMINAL	TE TERMINAL	TE TERMINAL
7-520365-2			

WIRE SIZE	CRIMP HEIGHT INCH [mm]	CRIMP HEIGHT REFERENCE SETTING	ϕ SOLDER
22	0.065+/-0.002 [1.65+/-0.05]	6.0	.12 IN [3.05mm]
24 OR 26	0.060+/-0.002 [1.52+/-0.05]	7.4	.12 IN [3.05mm]



- Δ 1 RECOMMENDED SPARE PARTS
- Δ 2 GREASE BEARING SURFACES LIGHTLY
3. LUBRICATE DAILY PER THE APPLICATOR INSTRUCTION SHEET SUPPLIED WITH THE APPLICATOR.
- Δ 4 APPLICATOR SPECIFIC DATA TO BE ENTERED INTO BLANK MEMORY CHIP AT ASSEMBLY. SEE BELOW FOR PART NUMBER:
 PNEUMATIC FEED WITH "SMART APPLICATOR" CONVERSION: 8-2151693-4
 SERVO FEED WITH "FINE CRIMP HEIGHT ADJUST": 8-2151693-5
 SERVO FEED WITH "NON-CRIMP HEIGHT ADJUST": 8-2151693-6
5. ADJUSTMENT OF THE STRIPPER MAY BE REQUIRED WHEN MOVING THE APPLICATOR BETWEEN BENCH AND LEADMAKER APPLICATIONS.
- Δ 6 GREASE THREADS, GROOVE AND O-RING ON ITEMS 139 & 152.
- Δ 7 MAGNET MUST BE ORIENTED CORRECTLY IN ORDER TO PROPERLY ACTUATE THE COUNTER.
- Δ 8 CRIMP HEIGHT REFERENCE SETTING WAS THE SETTING USED WHEN THE APPLICATOR WAS QUALIFIED AT THE FACTORY. ADJUSTMENT MAY BE NECESSARY WHEN RUNNING APPLICATOR IN THE FIELD.
- Δ 9 TO CONVERT THE APPLICATOR TO A NON-CARRIER CUTTING STYLE, REMOVE ITEM 13 AND ATTACH TO THE LOCATION ON BACK SIDE OF THE HOUSING. REFER TO INSTRUCTION SHEET FOR ADDITIONAL INFORMATION.
- Δ 10 ITEM 7 MUST BE REMOVED IF APPLICATOR IS USED ON BENCH MACHINE.
- Δ 11 ITEMS 5/22 AND 9 ARE REQUIRED WHEN RUNNING ON A LEADMAKER. ITEM 42 REQUIRED WHEN RUNNING ON A BENCH MACHINE.
- Δ 12 TO CHECK CRIMP HEIGHT, CRIMP SOLDER (ϕ .12 IN [3.05mm] 60/40 SOLID CORE) AND MEASURE AT CENTER OF SLUG.

Δ 13 IT MAY BE NECESSARY TO MODIFY THE T-TERMINATING/K-PRESS BASE PLATE BEFORE USE BY ADDING A 10-32 HOLE TO RELOCATE THE FORWARD STOP AS SHOWN.



- Δ 14 ITEMS 253 AND 255 MUST BE INSTALLED IN THE G-TERMINATING UNIT CHIP RELIEF HOLE BEFORE INSTALLING THE APPLICATOR.
- Δ 15 ITEM 257, REQUIRED IF APPLICATOR IS RUN ON T-TERMINATING UNIT/K-PRESS. GUARD, ITEM 256, REQUIRED IF APPLICATOR IS BEING USED ON G-TERMINATOR.
- Δ 16 TERMINAL PITCH NOT COMPATIBLE WITH MECHANICAL FEED.
- Δ 17 APPLY PART NUMBER 1-23419-5 LOCTITE TO THREADS OF ITEM 62.
- Δ 18 ITEMS NOT SHOWN.
- Δ 19 ITEM 261 REQUIRED WHEN APPLICATOR IS REMOVED FROM LEADMAKER AND PLACED IN AMP-O-LECTRIC TERMINATING UNIT.

***WARNING**
 ON INSTALLATION, SET WIRE DISC, ITEM 40 TO LARGEST WIRE SIZE SETTING. USE OF SETTINGS BELOW MINIMUM REQUIRED CRIMP HEIGHT SETTING WILL CAUSE DAMAGE TO CRIMP TOOLING.

Δ 8	-	1	1	1	1-18023-1	SCR, SHC, M4x10	262
Δ 9	-	1	1	1	803931-1	BRACKET, HOLD DOWN	261
Δ 10	-	REF	REF	REF	462992-7	GUARD ASSEMBLY	257
Δ 11	-	REF	REF	REF	679532-1	INSERT, GUARD	256
Δ 12	-	1	1	1	189728-1	BRACKET, SPACER	255
Δ 13	-	1	1	1	568681-1	SPACER, BASE PLATE	253
Δ 14	-	1	1	1	2119782-1	FINE ADJUST HEAD ASM, PACIFIC STYLE	251
Δ 15	-	-	-	-	2119640-1	PUSH ROD, AIR FEED	250
Δ 16	-	-	-	-	2079988-1	BUSHING, LCH5-12, MISUMI	249
Δ 17	-	1	1	1	1-22279-3	SPRING, COMPRESSION	246
Δ 18	-	1	1	1	7-18023-7	SCR, SKT HD CAP M3 X 4.0	241
	-77	-27	-25	-22	PART NO	DESCRIPTION	ITEM NO

SET UP GAUGE	LOC	DIST	REVISIONS			
2119599-1	A	66	REV	DATE	BY	APPV
			-	SEE SHEET 1		

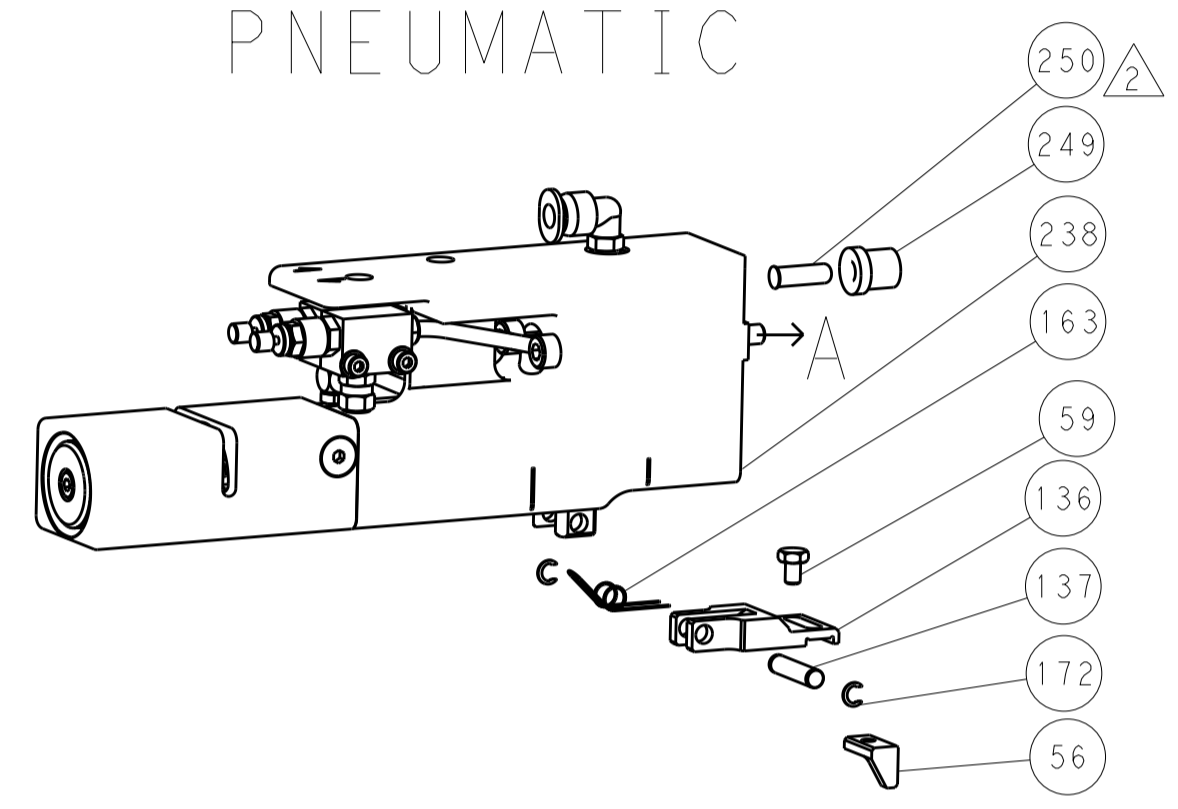
-	-	2	-	2168400-6	SHCS, LOW HEAD, RoHS, M5 X 16	240
-	-	-	-	2119580-1	MECHANICAL FEED ASSEMBLY	239
-	-	-	-	2063440-1	AIR FEED MODULE	238
-	-	1	-	2119740-2	TAG, IDENTIFICATION	213
-	-	1	-	1901094-3	SPACER, FEEDER	198
-	-	2	-	21045-3	RING, RETAIN, EXTERN, 3/16 CRESCENT	172
-	1	1	1	994969-1	MAGNET, RARE EARTH HIGH ENERGY	166
-	REF	REF	REF	994970-2	COUNTER, MAGNETIC	164
-	-	-	-	240638-1	SPRING, FEED FINGER	163
-	1	1	1	8-21084-1	O-RING, .801 ID, .070 DIA. MAT.	152
-	-	-	-	2119641-2	FEED CAM, AIR FEED	151
-	1	1	1	2119798-2	DETENT PIN	145
-	1	1	1	2079383-8	SCR, BHSC, RoHS (M4 X 16)	144
-	4	4	4	2168400-5	SHCS, LOW HEAD, RoHS, M4 X 20	143
-	1	1	1	2-2119656-0	APPLICATOR BASIC ASSEMBLY, SF	141
-	1	1	1	2119650-1	RAM, ASIAN STYLE, SIDE FEED	140
-	1	1	1	2119092-2	BOLT, ADJUSTMENT	139
-	-	-	-	3-23627-7	PIN, RETAIN, GRVD, 3/16 X .854	137
-	-	-	-	2119799-1	HOLDER, FEED FINGER, AF	136
-	-	REF	-	SEE NOTE 4	MEMORY CHIP, PROGRAMMED	135
-	-	1	-	1633743-1	SERVO FEED LATCH ASM	133
-	1	1	1	1-22281-8	SPRING, COMPRESSION	121
-	1	1	1	1-690438-0	FRONT STRIP GUIDE	96
-	6	6	6	2168083-1	SCR, SKT HD CAP, RoHS, M3 X 8.0	95
-	1	1	1	2168083-6	SCR, SKT HD CAP, RoHS, M5 X 65	93
-	1	1	1	455888-4	SPACER, CRIMPER	82
-	1	1	1	240641-9	SPACER	81
-	1	1	1	2119956-1	DOCUMENTATION PACKAGE	71
-	1	1	1	2161332-3	DEPRESSOR, WIRE FUNNEL	70
-	1	1	1	2161331-1	SPACER, WIRE FUNNEL DEPRESSOR	69
-	2	2	2	1-18028-4	WASHER, FLAT, REG M3	68
-	1	-	-	2119740-1	TAG, IDENTIFICATION	67
-	2	2	2	2168078-1	SCREW, DRIVE, RH, RoHS	66
-	1	1	1	2119793-1	LIMITER, ADJUSTMENT BOLT	63
-	3	3	3	992763-5	SCR, SET, SOC, CONE POINT, M3 X 4.0	62
-	2	2	2	2-18032-5	SCR, SET, FLT POINT M5 X 20.0	61
-	-	-	-	5-18022-5	SCR, HEX HD CAP, M4 X 6.0	59
-	-	-	-	462427-2	FINGER, FEED	56
-	2	2	2	2168083-3	SCR, SKT HD CAP, RoHS, M4 X 12.0	53
-	-	-	-	18023-9	SCR, SKT HD CAP M4 X 6.0	49
-	1	1	1	462433-9	SUPPORT, INSULATION	42
-	1	1	1	2079383-7	SCR, BHSC, RoHS (M8 X 25)	41
-	1	1	1	2119645-1	DISC, NUMBERED FA WIRE ADJUSTMENT	40
-	1	1	1	2119957-1	APPLICATOR SHIM PACK	39
-	1	1	1	2119644-2	RAM WASHER, PRECISION	38
-	2	2	2	5-22278-1	SPRING, COMPRESSION	33
-	1	1	1	2161328-1	HEX HEAD, FLANGED, M5 X 8mm LONG	32
-	2	2	2	1-2168083-4	SCR, SKT HD CAP, RoHS, M4 X 5	30
-	1	1	1	2161336-1	PLATE, REAR STRIP GUIDE	29
-	2	2	2	22281-9	SPRING, COMPRESSION	27
-	1	1	1	356835-1	LEVER, DRAG RELEASE	26
-	1	1	1	240792-1	DRAG, TERMINAL	25
-	1	1	1	684042-4	GUIDE, STRIP, FRONT	24
-	1	1	1	980371-4	SCR, SKT HD SHLDR 5.0 DIA X 6.0	23
-	1	1	1	462431-6	WIRE FUNNEL	22
-	1	1	1	2168083-2	SCR, SKT HD CAP, RoHS, M4 X 8.0	21
-	1	1	1	1-18028-2	WASHER, FLAT, REG M4	20
-	1	1	1	2119533-1	STRIPPER, SIDE FEED	19
-	1	1	1	463460-2	HOLD DOWN, TERMINAL	18
-	1	1	1	469542-3	REAR FLOATING SHEAR	17
-	2	2	2	1-2168083-1	SCR, SKT HD CAP, RoHS, M3 X 6	16
-	1	1	1	2161335-2	SHEAR PLATE, REAR	15
-	1	1	1	2119862-2	SHEAR HOLDER, REAR	14
-	1	1	1	2119806-1	INSERT, SHEAR	13
-	1	1	1	3-22280-3	SPRING, COMPRESSION	12
-	1	1	1	356885-4	STOP, SHEAR	11
-	1	1	1	462843-8	TERMINAL SUPPORT	9
-	1	1	1	464291-6	ANVIL, SAND-BLASTED 22-18	8
-	1	1	1	803925-2	GUIDE, CARRIER SCRAP	7
-	1	1	1	2-690468-5	DEPRESSOR SHEAR, REAR	6
-	1	1	1	462431-3	WIRE FUNNEL	5
-	1	1	1	1-238009-4	BLOCK, FL CRIMPER SPACER	4
-	1	1	1	464290-2	CRIMPER, SEMI-FLAT 22-18	1
-77	-27	-25	-22	PART NO	DESCRIPTION	ITEM NO

DIMENSIONS:		TOLERANCES UNLESS OTHERWISE SPECIFIED:		DRAWN BY		DATE		CHECKED BY		DATE	
mm	0 PLC	±		WEAVER	12JUN2012			G. HOFENER	12JUN2012		
	1 PLC	±0.1									
	3 PLC	±0.02									
	4 PLC	±0.005									
	ANGLES	±0.0005									
MATERIAL:	FINISH:	WEIGHT:	SCALE:	APPROVED BY		DATE		PRODUCT SPEC		NAME	
				E. ELBIN		12JUN2012				Ocean Side Feed Applicator	
								APPLICATION SPEC		SIZE	
										CAGE CODE	
										DRAWING NO	
										RESTRICTED TO	
										A1 00779	
										C=2151693	
										SHEET 3 OF 4	
										REV A	

PACIFIC VERSION
 Shown on sheets 3 of 4 & 4 of 4
 (Atlantic version shown on sheets 1 of 4 & 2 of 4)

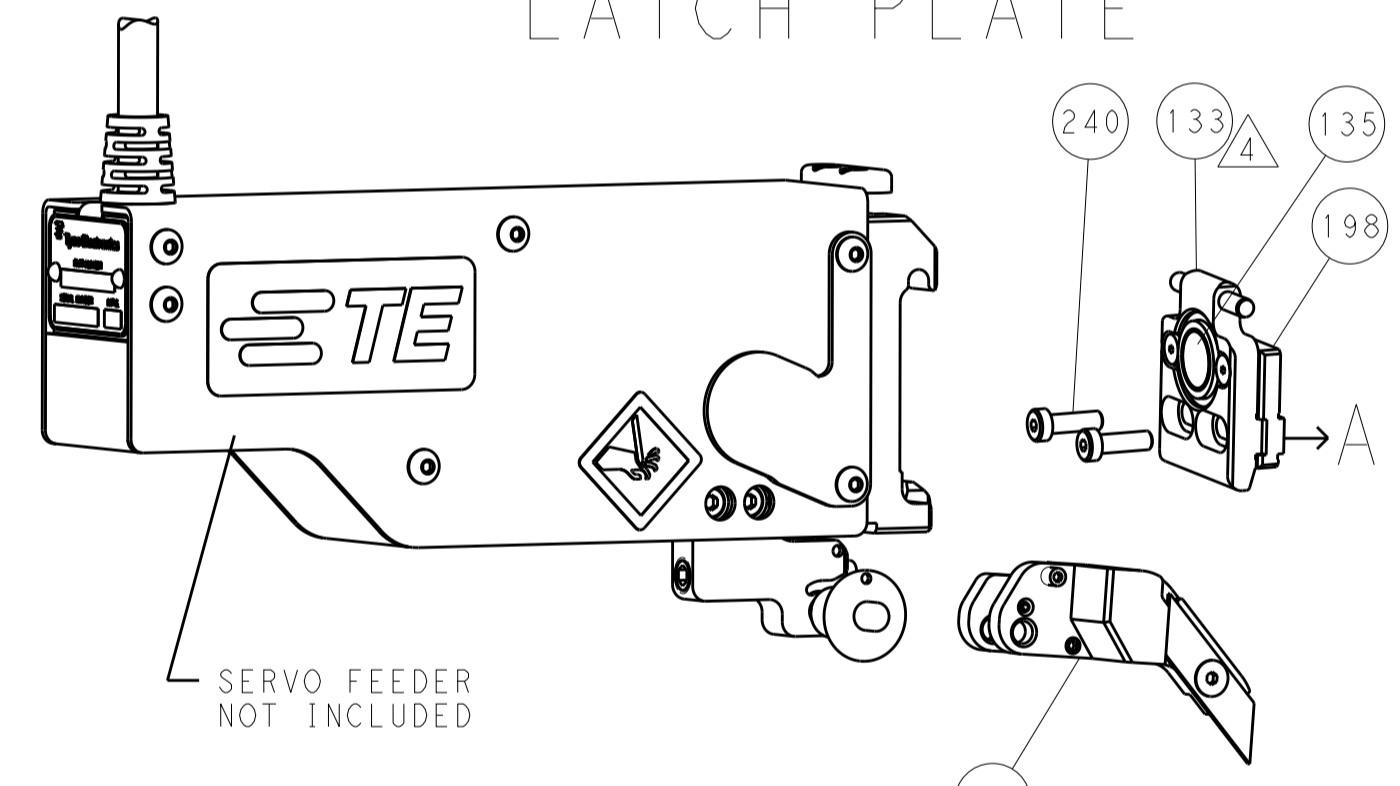
LOC		DIST		REVISIONS			
A	66	P	LTM	DESCRIPTION	DATE	DWN	APVD
		-		SEE SHEET 1	-	-	-

FEED TYPE PNEUMATIC



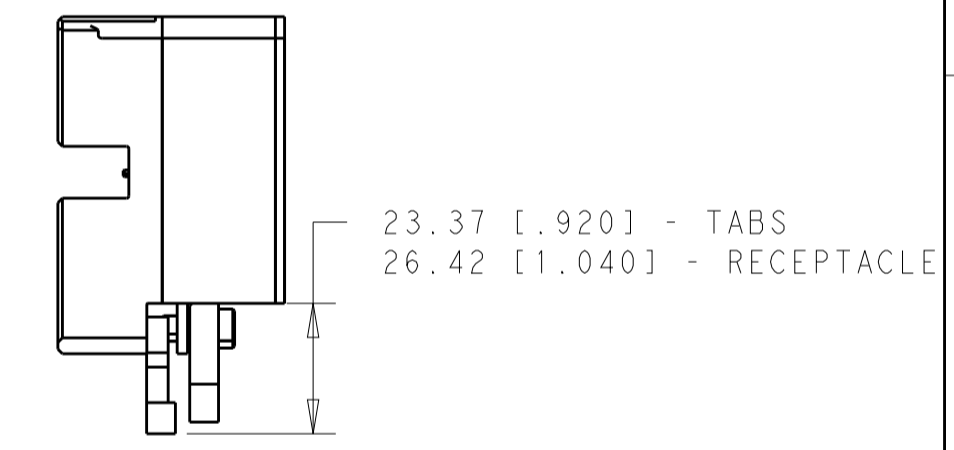
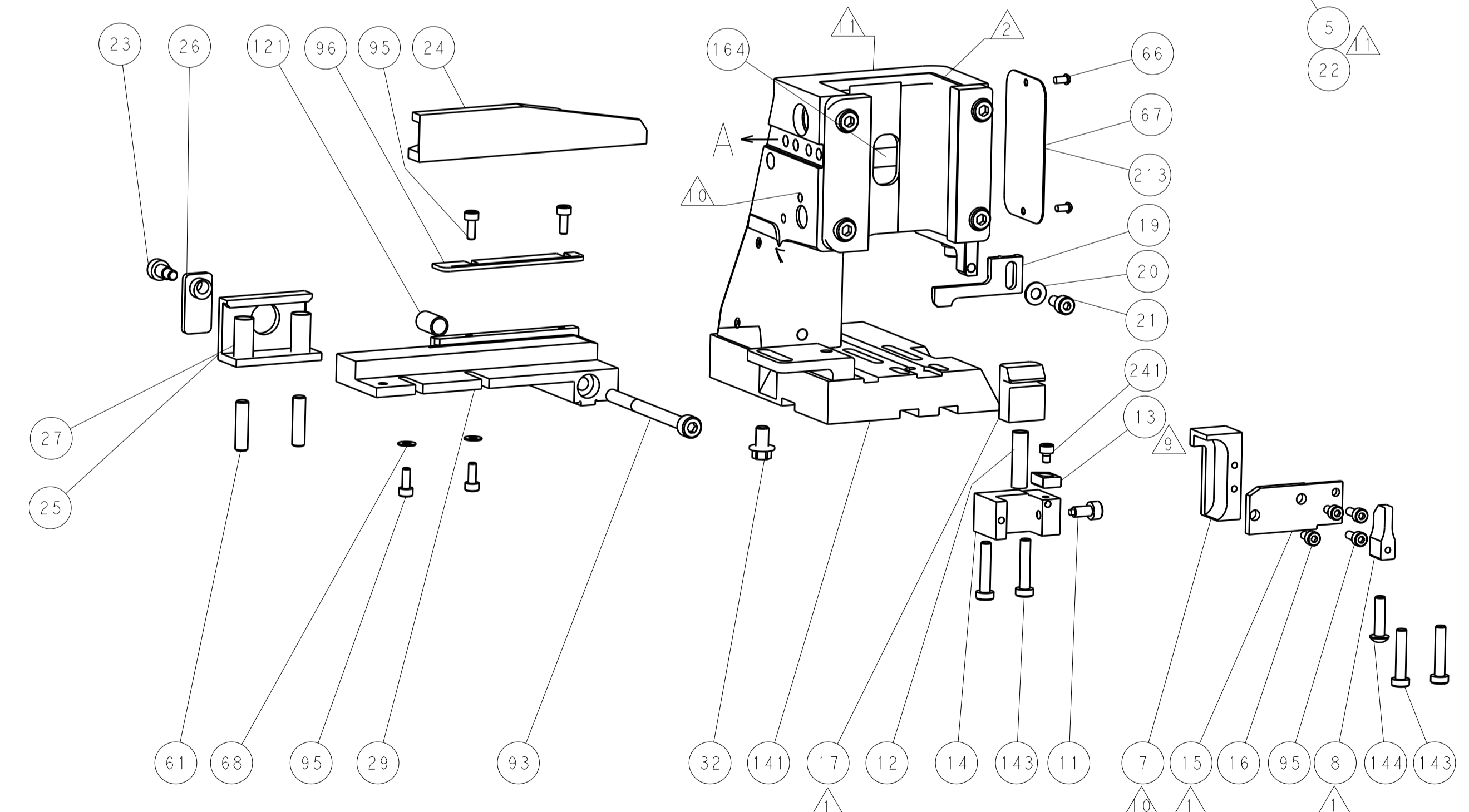
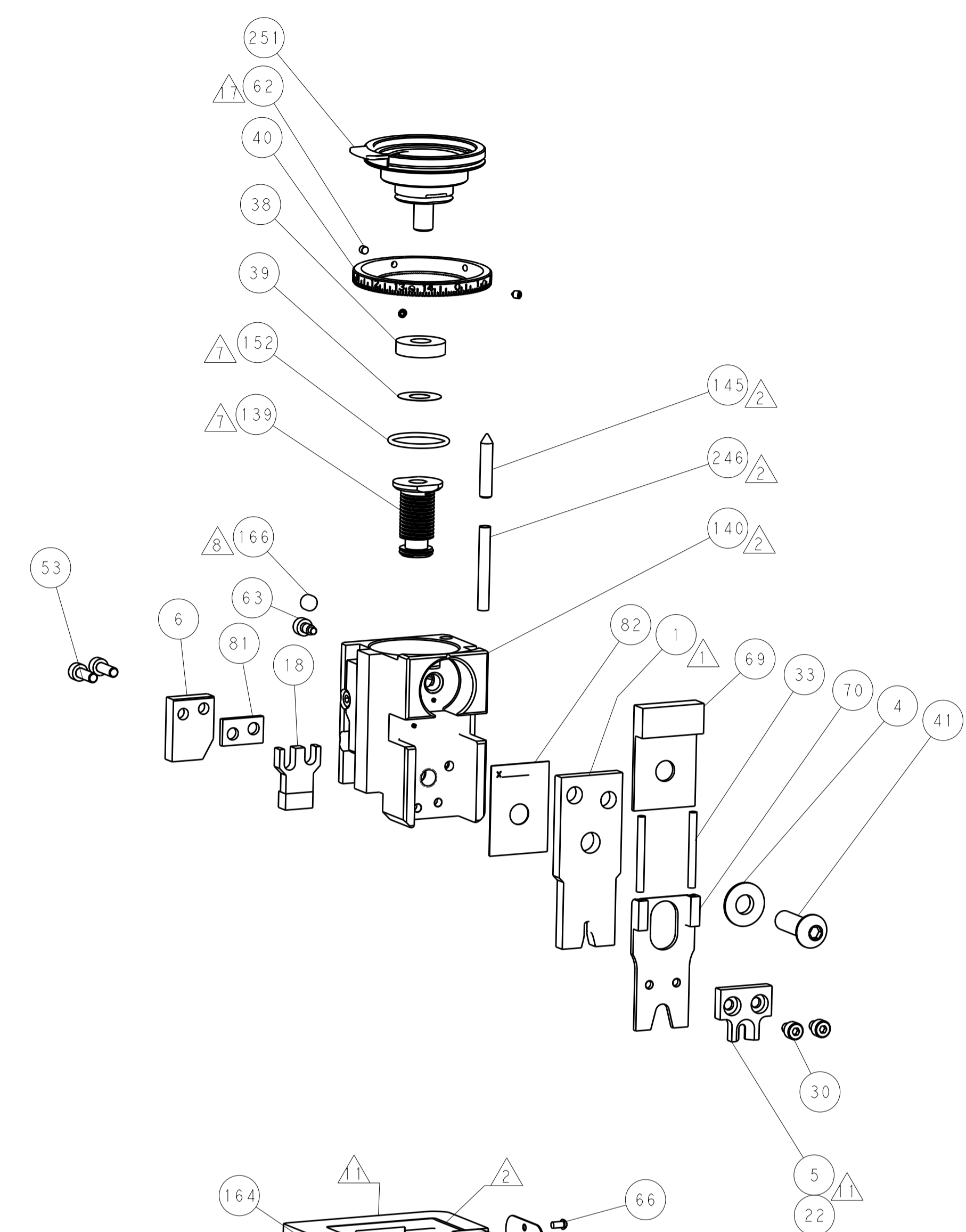
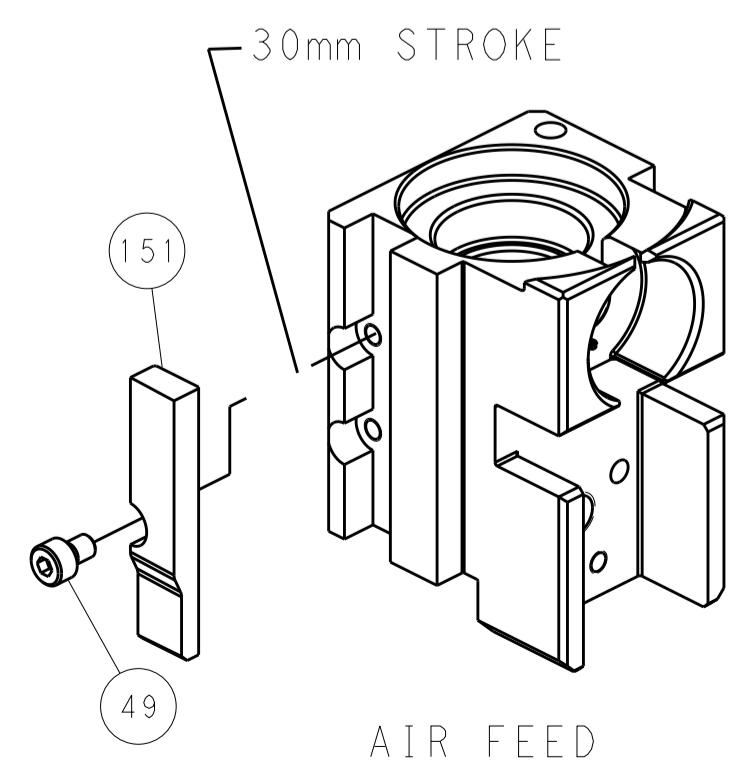
SCALE 1:2

SERVO LATCH PLATE

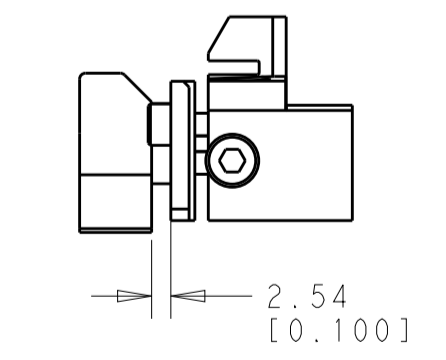


***FEED FINGER REPRESENTATION ABOVE MAY DIFFER FROM ACTUAL FEED FINGER THAT IS REQUIRED BY THIS APPLICATOR

CAM POSITION



HOLDDOWN SET-UP



LOWER TOOLING SET-UP

PACIFIC VERSION
 Shown on sheets 3 of 4 & 4 of 4
 (Atlantic version shown on sheets 1 of 4 & 2 of 4)

DIMENSIONS:		TOLERANCES UNLESS OTHERWISE SPECIFIED:		DWN	B. WEAVER	12JUN2012	TE Connectivity Harrisburg, PA 17105-3608
mm	0 PLC ±.1	1 PLC ±0.1	2 PLC ±0.02	CHK	G. HOFENER	12JUN2012	
MATERIAL	FINISH	3 PLC ±0.005	4 PLC ±0.0005	APVD	T. ELBIN	12JUN2012	NAME
		ANGLES ±.1					Ocean Side Feed Applicator
				WEIGHT			SIZE
							CAGE CODE
							DRAWING NO
							RESTRICTED TO
							A 00779 C=2151693
							CUSTOMER ACCESSIBLE PRODUCTION DRAWING
							SCALE 1:1 SHEET 4 OF 4 REV A