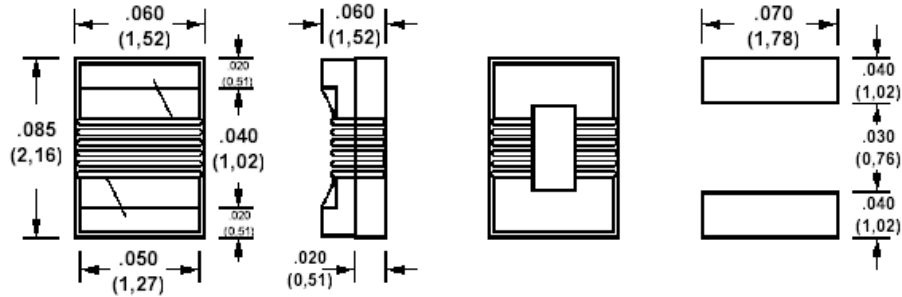
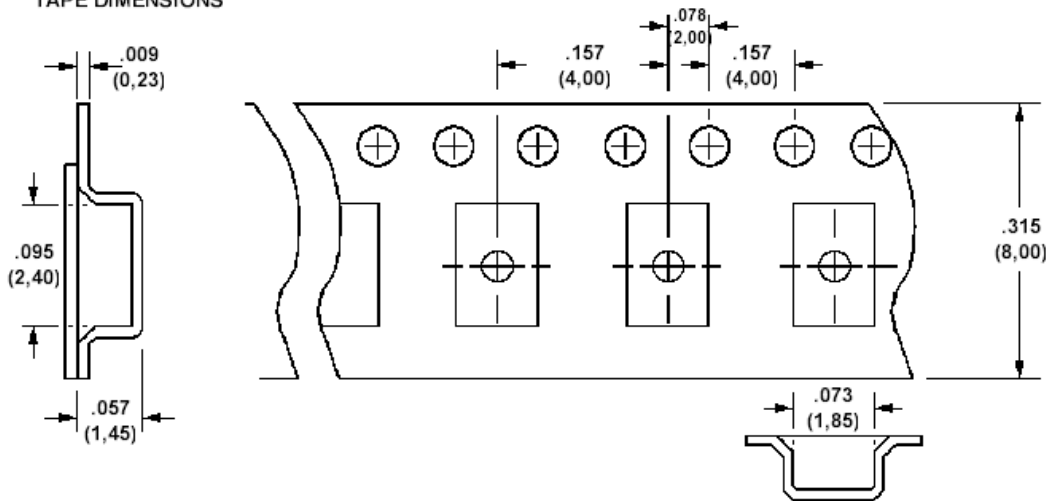


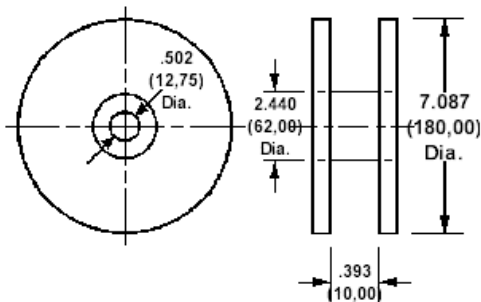
## 555-0805 Chip inductors, wire wound, surface mount, 0805 package, 2.2nH thru 680nH



### TAPE DIMENSIONS



### REEL DIMENSIONS



### How to order code

**555-0805-XXX-Y-ZZ**

Basic Part No XXX = Inductance identifier, Y = tolerance, ZZ = packaging

Basic Part Number (XXX)	Inductance (nH)	Test Freq (MHz) L	Q (min)	Test Freq (MHz) Q	SRF (min) (MHz)	RDC (max) (W)	IDC (max) (mA)	
555-0805	-2N2	2.2	250	50	1500	6000	0.080	600
	-3N3	3.3	250	50	1500	6000	0.080	600
	-6N8	6.8	250	50	1000	5500	0.110	600
	-8N2	8.2	250	50	500	4700	0.120	600
	-12N	12	250	50	500	4000	0.150	600
	-15N	15	250	50	500	3400	0.170	600
	-18N	18	250	50	500	3300	0.200	600
	-22N	22	250	55	500	2600	0.220	500
	-27N	27	250	55	500	2500	0.250	500
	-33N	33	250	60	500	2050	0.270	500
	-39N	39	250	60	500	2000	0.290	500
	-47N	47	200	60	500	1650	0.310	500
	-56N	56	200	60	500	1550	0.340	500
	-68N	68	200	60	500	1450	0.380	500
	-82N	82	150	65	500	1300	0.420	400
	-R10	100	150	65	500	1200	0.460	400
	-R12	120	150	50	250	1100	0.510	400
	-R15	150	100	50	250	920	0.560	400
	-R18	180	100	50	250	870	0.640	400
	-R22	220	100	50	250	850	0.700	400
-R27	270	100	40	100	800	1.100	280	
-R33	330	100	40	100	750	1.200	260	
-R39	390	100	40	100	700	1.500	200	
-R47	470	100	40	100	650	2.500	170	
-R56	560	50	40	50	600	3.500	170	
-R68	680	50	30	50	550	4.000	170	

TOLERANCE (Y)		
Tolerance Code (Y)	Inductance Tolerance	Notes
F	± 1%	Made to order
G	± 2%	
J	± 5%	
K	± 10%	Standard
M	± 20%	Made to order

PACKAGING (ZZ)	
-00	Loose Piece
-36	Taped and Reeled

MATERIAL SPECIFICATIONS	
Base Material	Ceramic
Metallised pad	Super adhesion Molybdenum/Manganese with Gold over plating
Operating Temperature	-55°C to 125°C
Storage Temperature	-55°C to 100°C