

NOTES: UNLESS OTHERWISE SPECIFIED
 1. FOR GENERAL SERIES SPECIFICATIONS, SEE SD74-0000.

2. MATERIAL SPECIFICATIONS:
 B05 PER UNS 53800

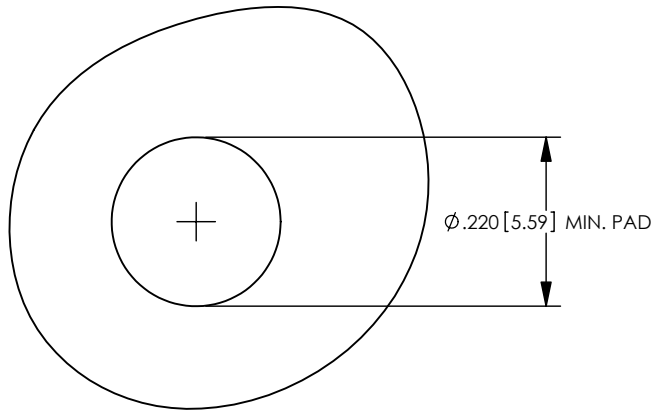
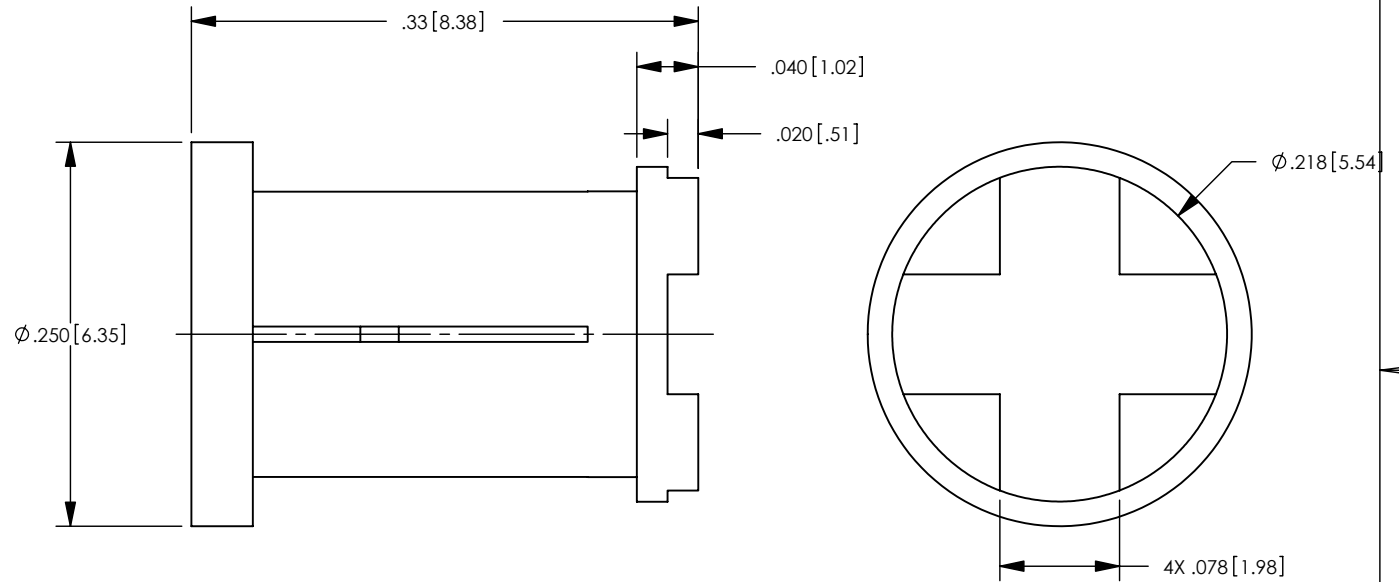
3. FINISH SPECIFICATIONS:
 .000030 MIN. GOLD OER ASTM B488 OVER .000050 MIN. NICKEL PER AMS QQ-N-290.

4. ELECTRICAL SPECIFICATIONS:
 CURRENT RATING: 20 AMP.

5. FOR USE WITH 14 GA WIRE OR EQUIVALENT.

6. REFER TO CAP10-01 FOR CABLE ASSEMBLY PROCEDURE.

| REV | DESCRIPTION | BY DATE | APPD |
|-----|--------------------|-----------------|------|
| B | REVISED PER ER7306 | CMB 04/14/08 | CMB |



RECCOMENDED P.C. BOARD LAYOUT
 SCALE 4:1

CATALOG P/N: 01307

| | | | | | |
|--|----------|----------|------------------------------------|---|---------|
| PER ASME Y14.5M-1994 UNLESS OTHERWISE SPECIFIED: DIMENSIONS ARE IN INCHES [MM] TOLERANCES: DECIMAL: .XX [X.X] ± .01 [0.3] .XXX [X.XX] ± .005 [0.13] .XXXX [X.XXX] ± .XXXX ANGLES: ± 2° SCALE: 8:1 | | | | Winchester Electronics Corporation 62 Barnes Industrial Road North Wallingford, Connecticut 06492 | |
| CUSTOMER DRAWING | | | 40 AMP POWER RECEPTACLE | | |
| DRAWN | DATE | APPROVED | DATE | A | SD01307 |
| JWH | 10/16/00 | JED | 10/18/00 | | |
| APPROVED | DATE | APPROVED | DATE | SHT 1 OF 1 | REV B |
| JMC | 10/18/00 | KJT | 10/18/00 | | |