

# Wire Wound Type Common Mode Filter

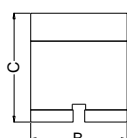
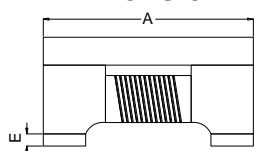
HDMI2012F2SF-SERIES

## 1. Features

1. High common mode impedance at high frequency effects excellent noise suppression performance.
2. HDMI2012F2SF series realizes small size and low profile. 2.0x1.2x1.2 mm.
3. 100% Lead(Pb) & Halogen-Free and RoHS compliant.
4. Operating temperature -40~+125°C (Including self - temperature rise)

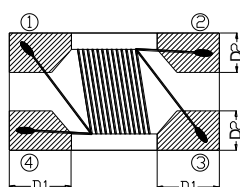


## 2. Dimension



當破損面積 < 5%, 產品列入允收品範圍

產品破損寬度



Series	A(mm)	B(mm)	C(mm)	D1(mm)	D2(mm)	E(mm)
2012F2SF	2.0±0.2	1.2±0.2	1.2±0.2	0.50±0.1	0.51±0.1	0.15±0.1

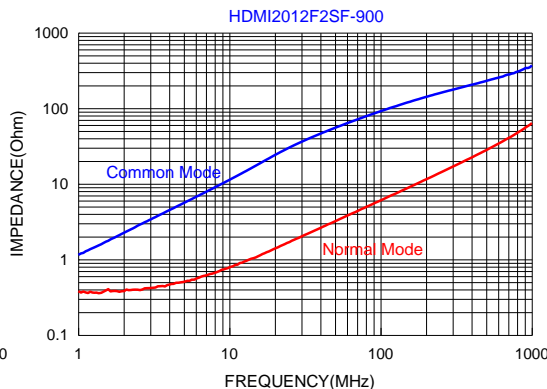
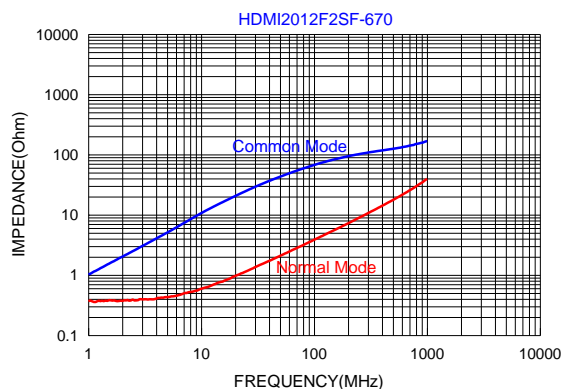
## 3. Part Numbering



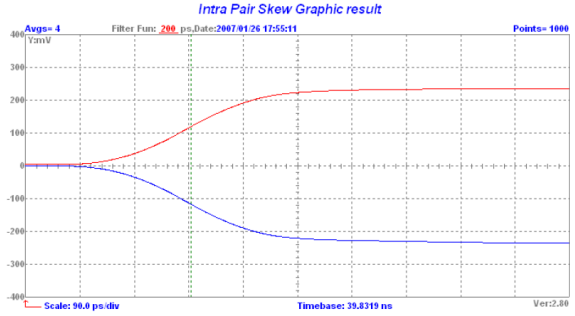
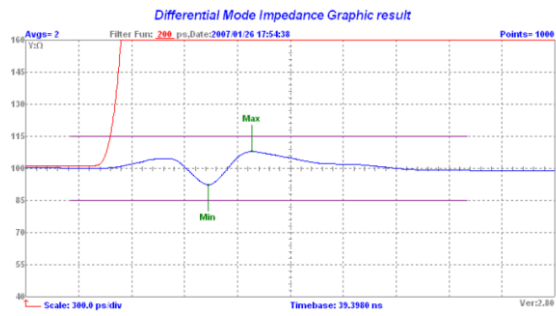
- A: Series
- B: Dimension
- C: Material                      Ferrite
- D: Number of Lines            2=2 lines
- E: Type                            S=One Circuit Type , N=Unshielded
- F: Lead free
- G: Impedance                    670=67Ω
- H: Packaging                      T=Taping and Reel, B=Bulk
- I: Rated Current                 04=400mA

## 4. Specification

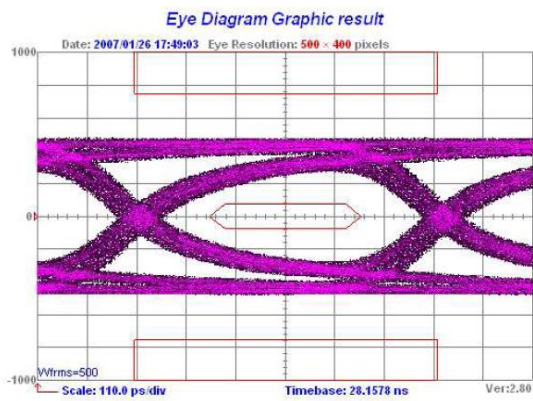
TAI-TECH Part Number	Common mode Impedance (Ω)		Test Frequency (MHz)	DC Resistance (Ω) max.	Rated Current (mA)	Rated Volt. (Vdc)	Withstand Volt. (Vdc)	IR (Ω) min.
	67 typ.	50 min.						
HDMI2012F2SF-670T04	67 typ.	50 min.	100	0.30	400	50	125	10M
HDMI2012F2SF-900T04	90 typ.	65 min.	100	0.30	400	50	125	10M



### Intra Pair Skew Test



### Eye Diagram Graphic Test



### Insertion Loss Test

