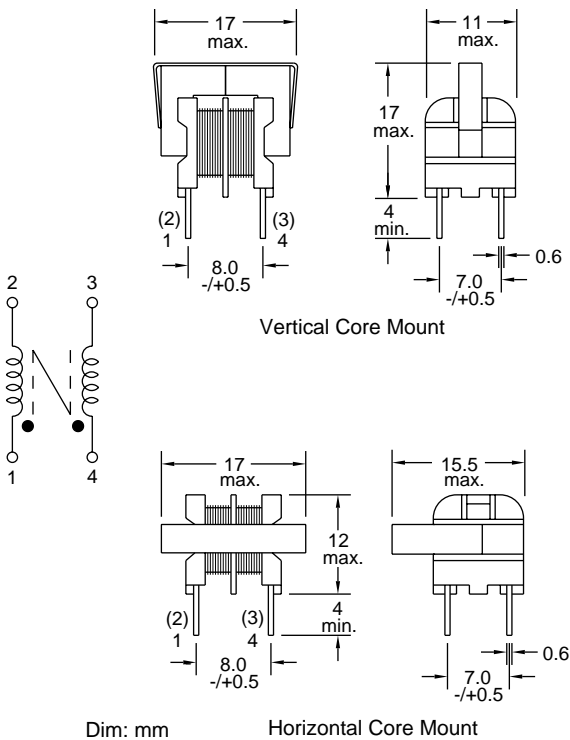


# Common Mode Inductors/EMI Filters

## Special Features

- Reduce conductive EMI emission
- High inductance, compact size
- High attenuation at low frequency
- Dielectric strength 3750Vrms
- Coil wound on VW-1 rated plastic bobbin
- Core mounted horizontal or vertical (add H or V after P/N)
- Rated current to cause 35°C maximum temperature rise
- Operating temperature -55 to +105°C

7300 Series			
Part Number	L (mH) Min. @ 1KHz	I, DC (A)	DCR (Ω) Max.
7350-	0.5	1.5	0.12
7351-	1	1.2	0.22
7352-	2	0.85	0.4
7353-	5	0.5	1.0
7354-	8	0.4	2.0
7355-	10	0.35	2.2
7356-	22	0.27	4.0



**J.W. Miller**  
MAGNETICS

306 E. Alondra Blvd., Gardena, CA 90247-1059 • (310) 515-1720 • FAX (310) 515-1962

[www.jwmiller.com](http://www.jwmiller.com)